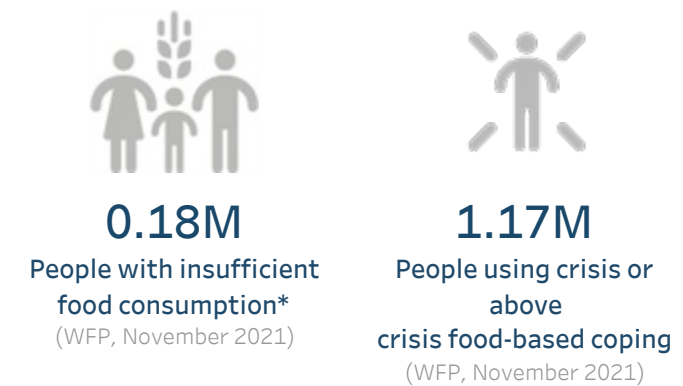


# HungerMap LIVE: Hunger and COVID-19 Weekly Snapshot

Luanda, Angola | November 19, 2021



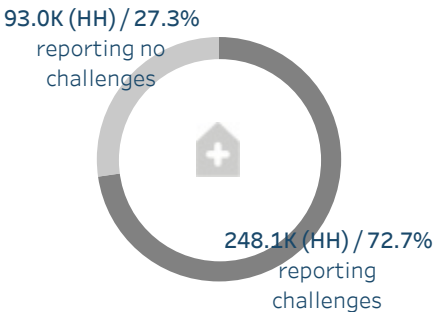
\*People with insufficient food consumption refer to those with poor or borderline food consumption, according to the Food Consumption Score (FCS)

Number of people with insufficient food consumption

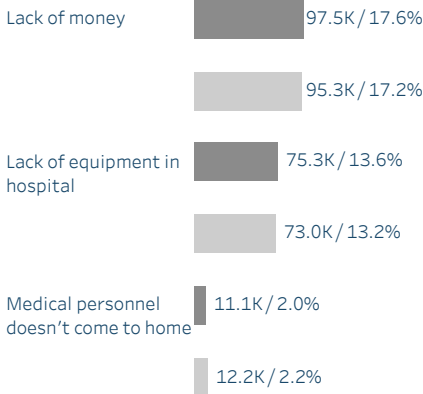


## HEALTH ACCESS

The number of households reporting challenges accessing health services has increased by 4.7K compared to last week



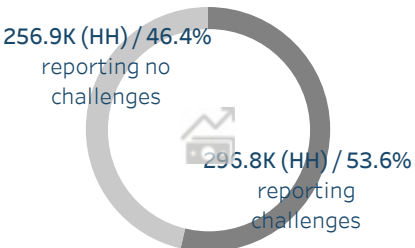
### Top barriers to accessing health services



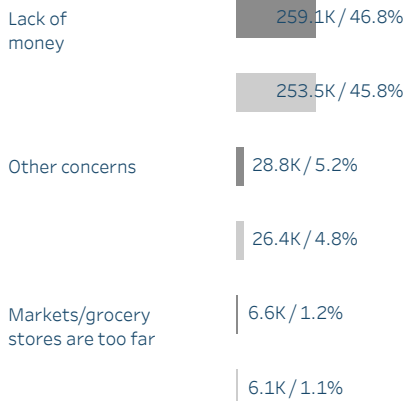
■ November 15, 2021      Source: WFP  
■ November 8, 2021

## MARKET ACCESS

The number of households reporting challenges accessing markets/grocery stores has increased by 8.8K compared to last week



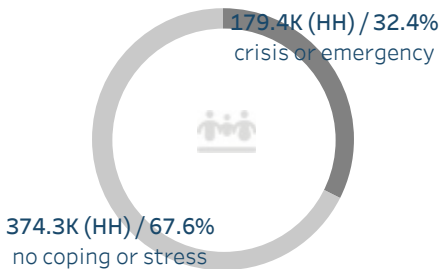
### Top barriers to accessing markets/grocery stores



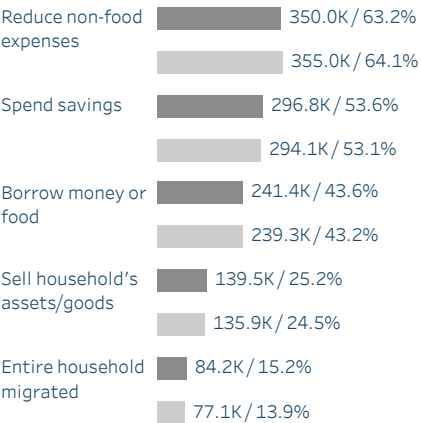
■ November 15, 2021      Source: WFP  
■ November 8, 2021

## LIVELIHOOD COPING

The number of households using crisis or emergency livelihood coping strategies has increased by 9.0K compared to last week



### Top livelihood coping strategies



■ November 15, 2021      Source: WFP  
■ November 8, 2021

## NOTES

WFP's Hunger Monitoring Unit (previously known as mVAM) conducts continuous food security monitoring via phone interviews. Data is collected on a rolling basis and processed daily. Daily updates represent a snapshot of the current situation over the past 28/30 calendar days. Note that there is a slight time lag of 2-4 days to ensure data quality. In light of the recent Coronavirus Disease (COVID-19) outbreak, these systems have been expanded to monitor COVID-19 impacts on households, specifically the access to health services, markets and livelihood changes/impacts. This will help WFP and other agencies monitor the situation, capture problems in real time and provide the necessary information for early action and mitigation.

CONTACTS  
Michele Mussoni  
Head of Office  
WFP Angola  
Michele.mussoni@wfp.org

António Paulo  
VAM Officer  
WFP Angola  
Antonio.paulo@wfp.org

