



**Chief Financial Officer Division (CFO)**

# **ANNUAL PERFORMANCE REPORT 2024**

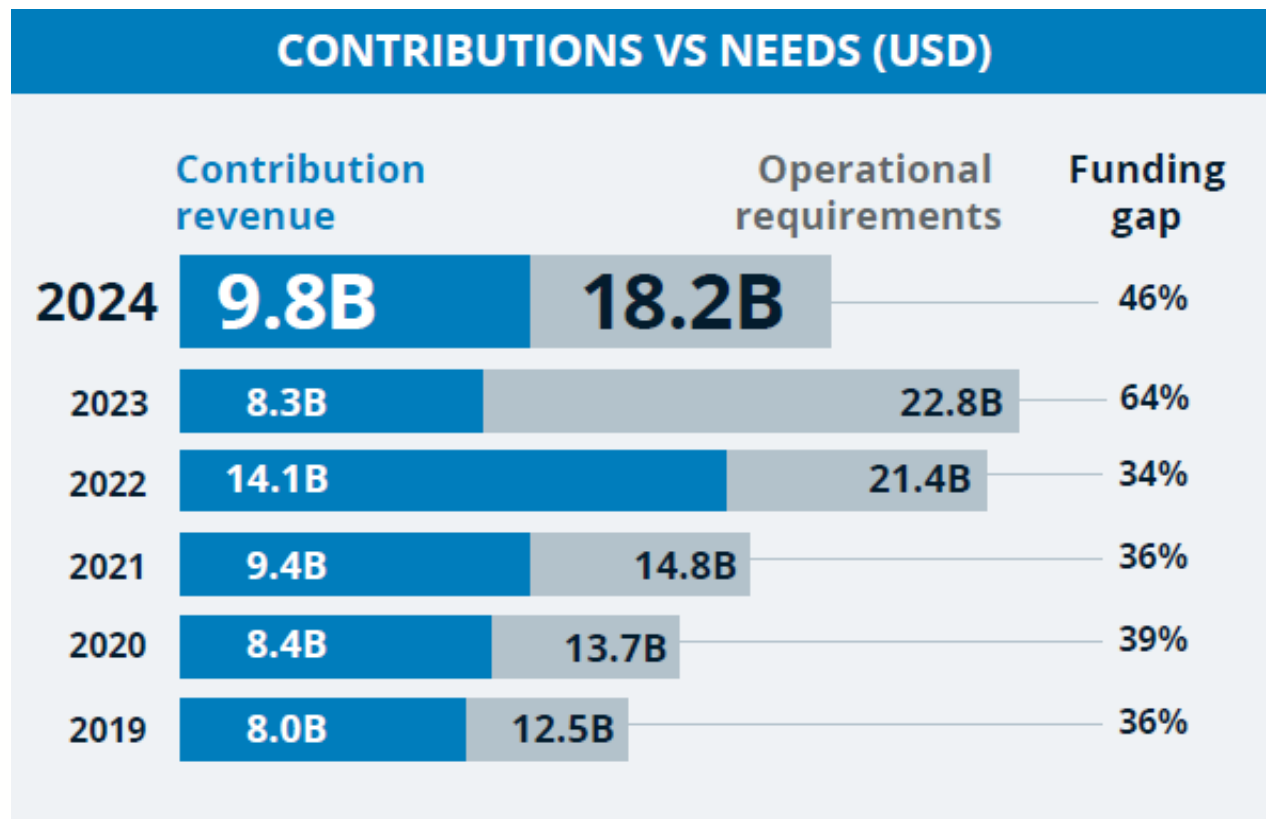
## **Executive Board – Annual Session**

**23-26 June 2025**

**WFP**  
World Food Programme

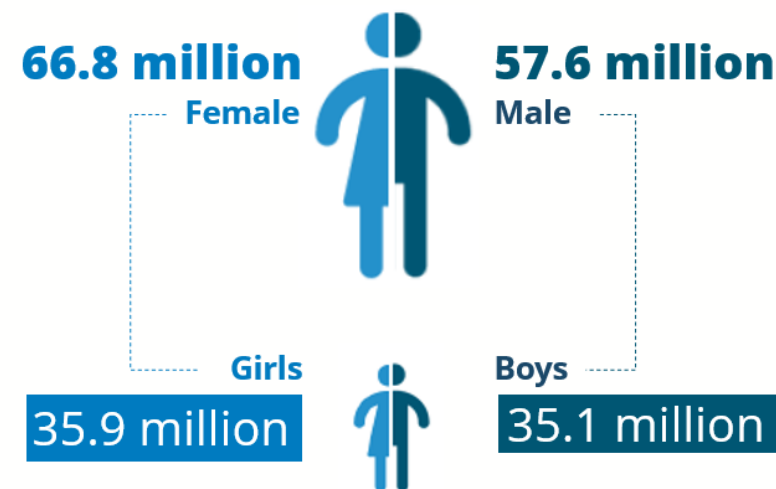
SAVING LIVES  
CHANGING LIVES

# Unprecedented humanitarian needs outpaced available contributions

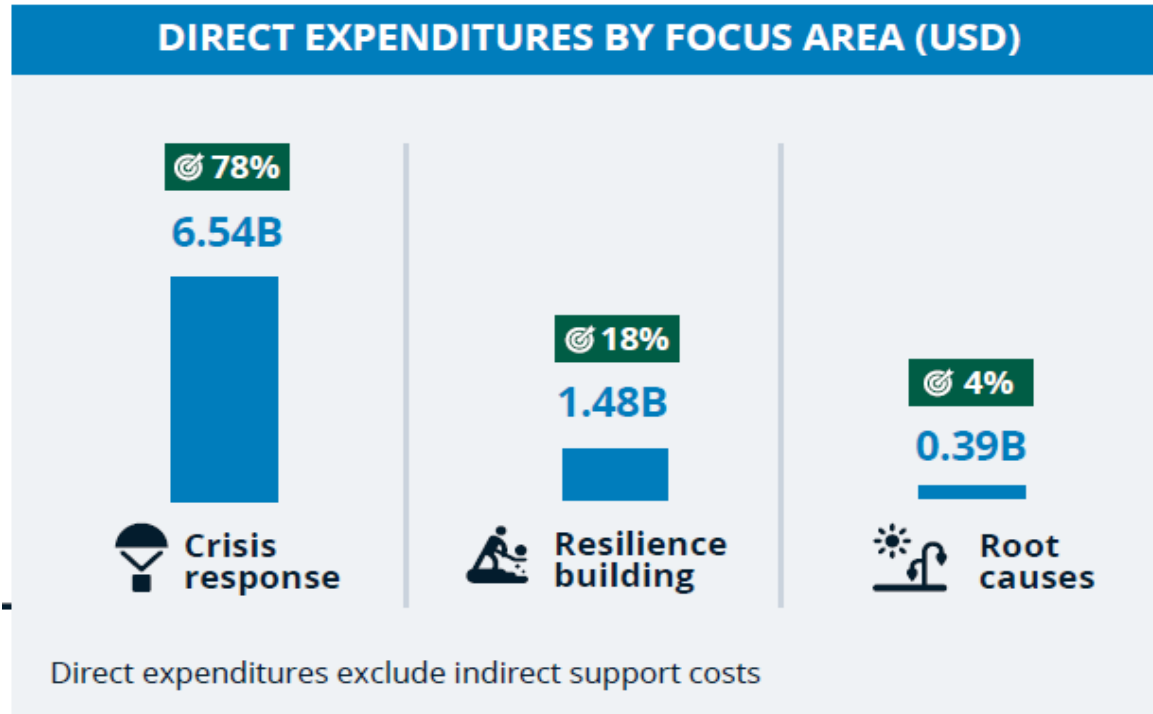


Total number of **people** reached in 2024

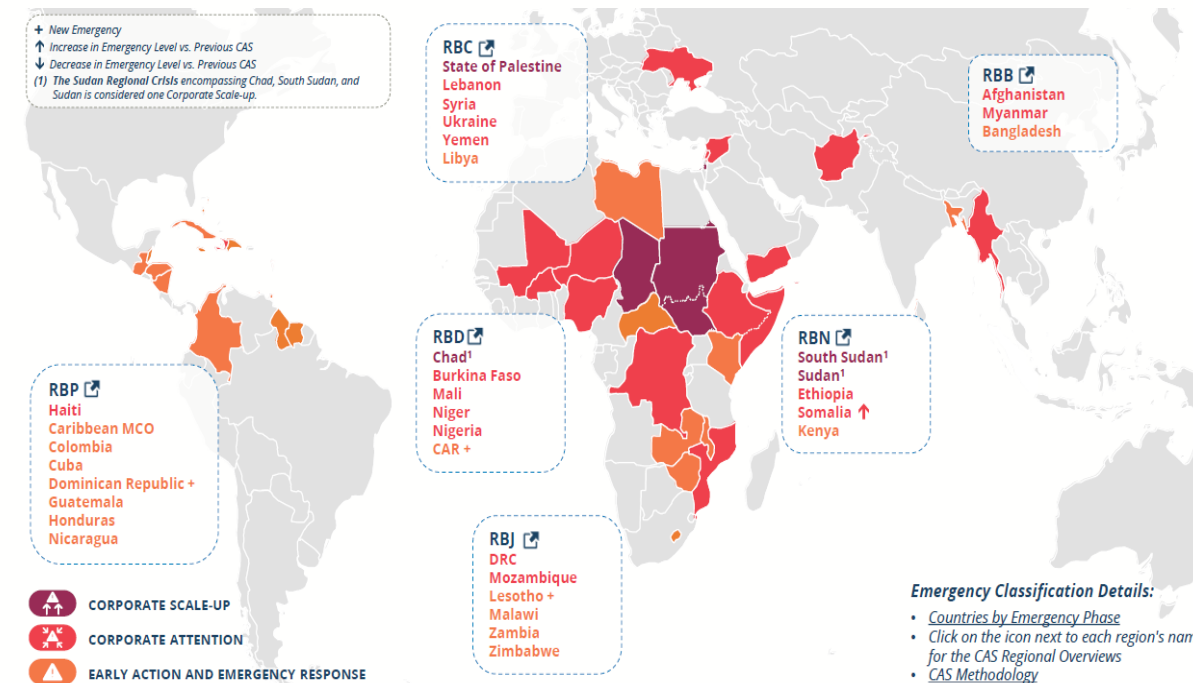
**124.4 million**



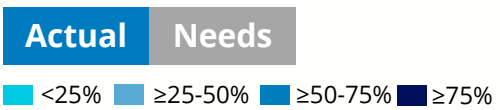
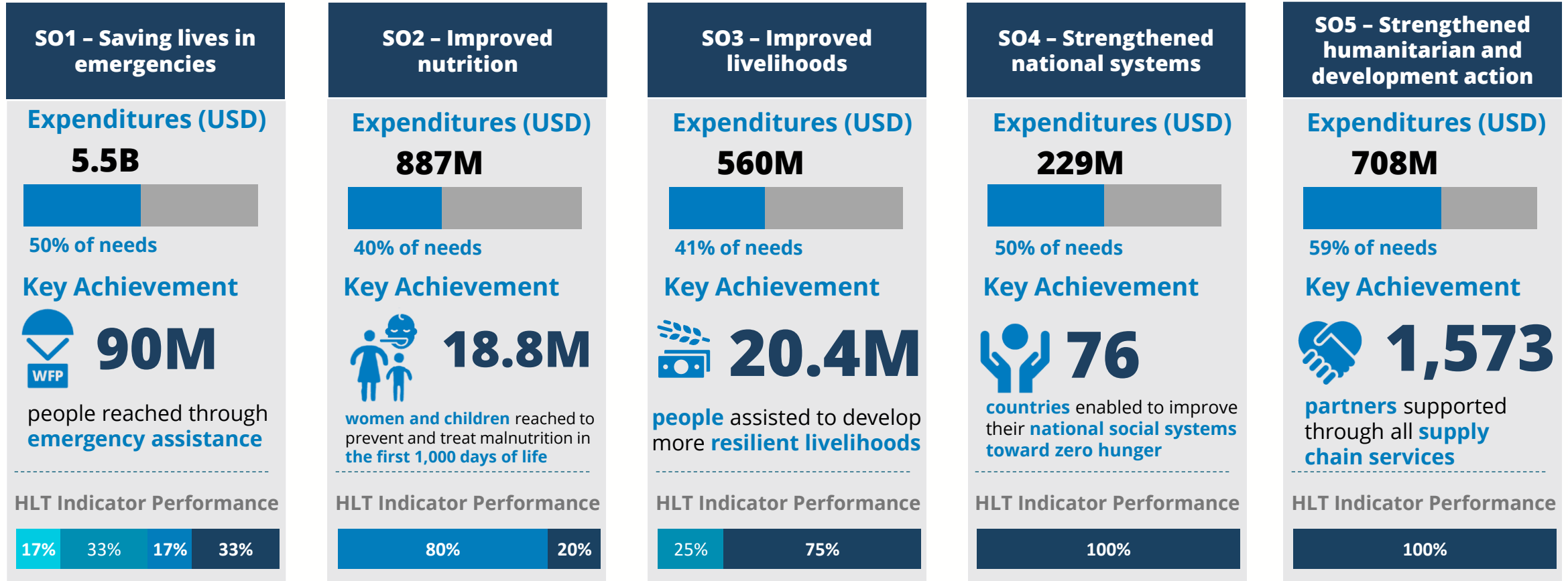
# Expenditures were concentrated on humanitarian assistance and crisis response



- Country offices **prioritized** the allocation of most resources to crisis-related programmes (78% of total direct expenditures)
- WFP responded to **emergencies** in 47 countries with active emergencies, corporate attention or corporate scale-up status
- Resilience building and root causes together accounted for 22 percent of total expenditure, as was the case in 2023.



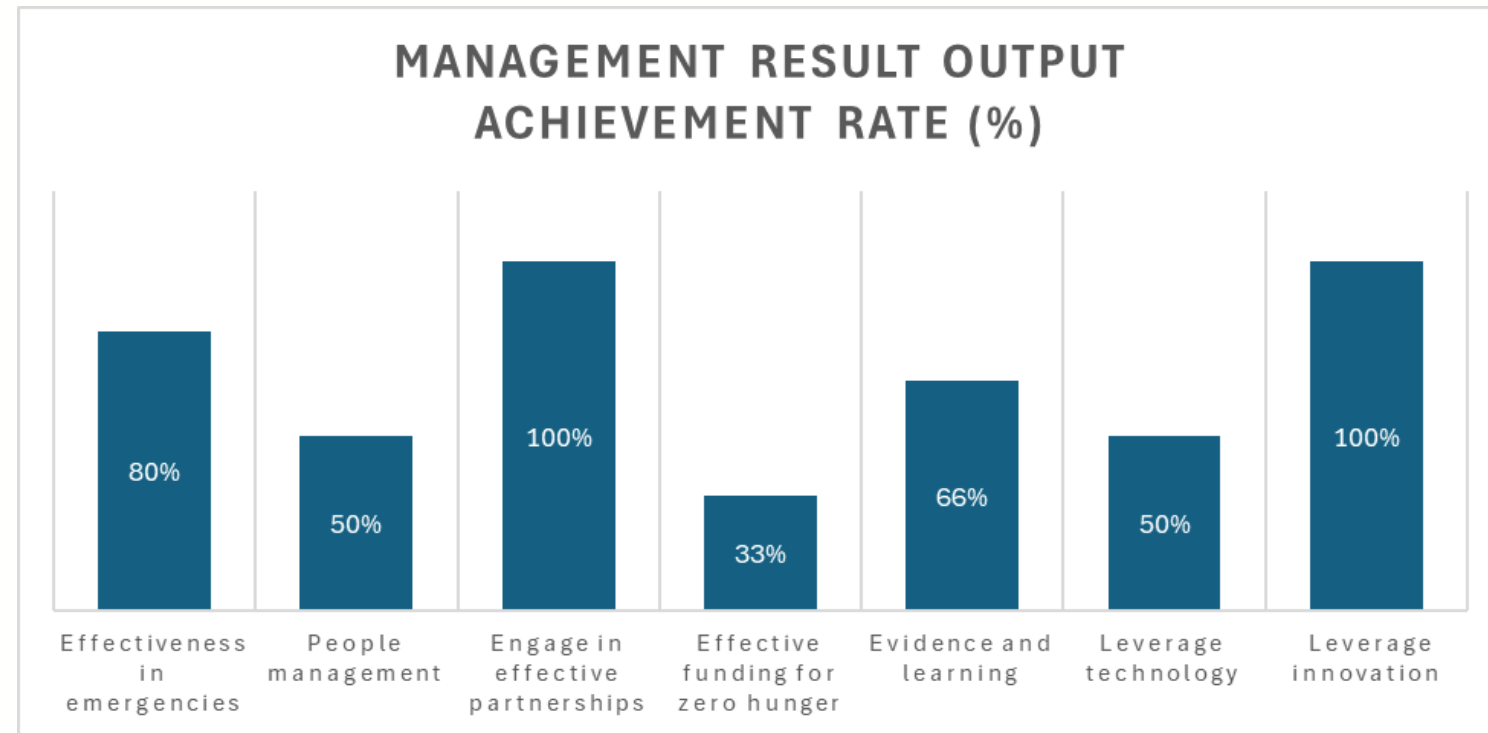
# WFP's performance against its high-level targets



*\*share of indicators by performance threshold*

# Management performance facilitated operations

- **PSA expenditures** totalled **USD 480.9 million**, reducing the overhead budget by 15 percent (USD 87 million)
- **USD 60 million** was distributed to 38 country offices as a **safety net**.
- A re-organization led to a significantly **leaner organizational structure**, enhanced institutional coherence, clearer lines of accountability, better support to field operations.
- The **Global Assurance Project** advanced our commitment to meeting assurance standards in country offices.





# Q&A THANK YOU



World Food Programme