



World Food  
Programme

SAVING  
LIVES  
CHANGING  
LIVES

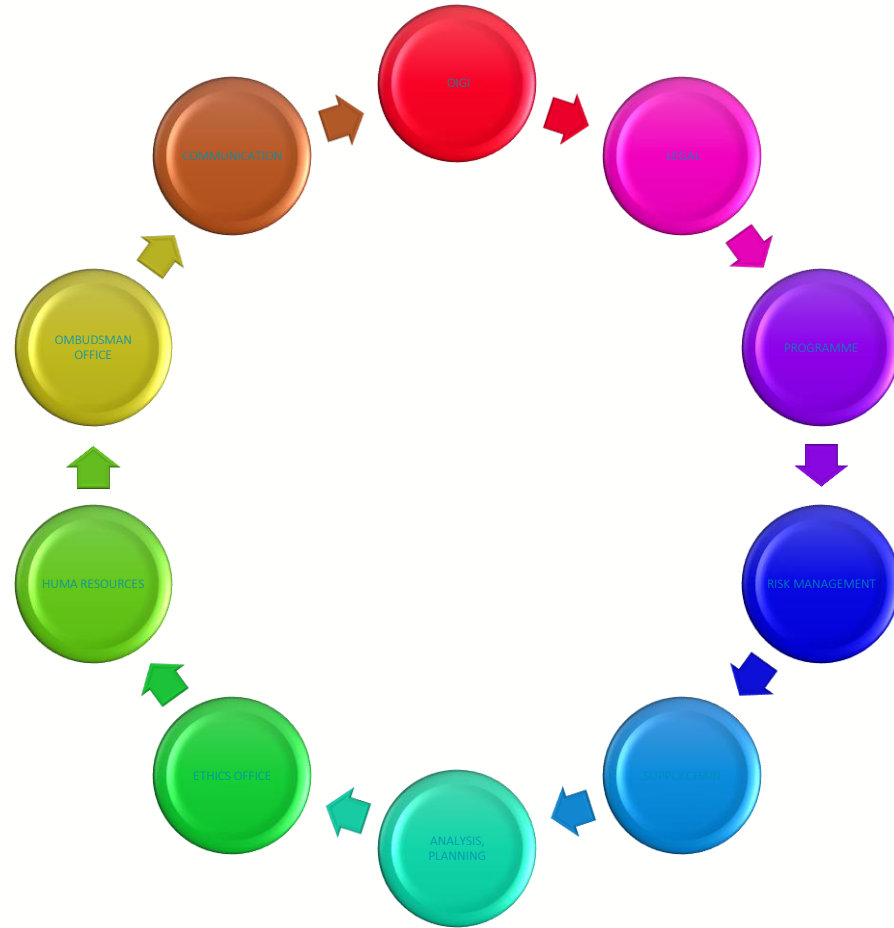
# Annual Update on Progress in Implementing the Recommendations from the Strategic Evaluation of WFP's Work on Protection from Sexual Exploitation and Abuse

Executive Board Annual Session Rome, 26 June 2025



# PSEA: A Whole-of-Organization Approach

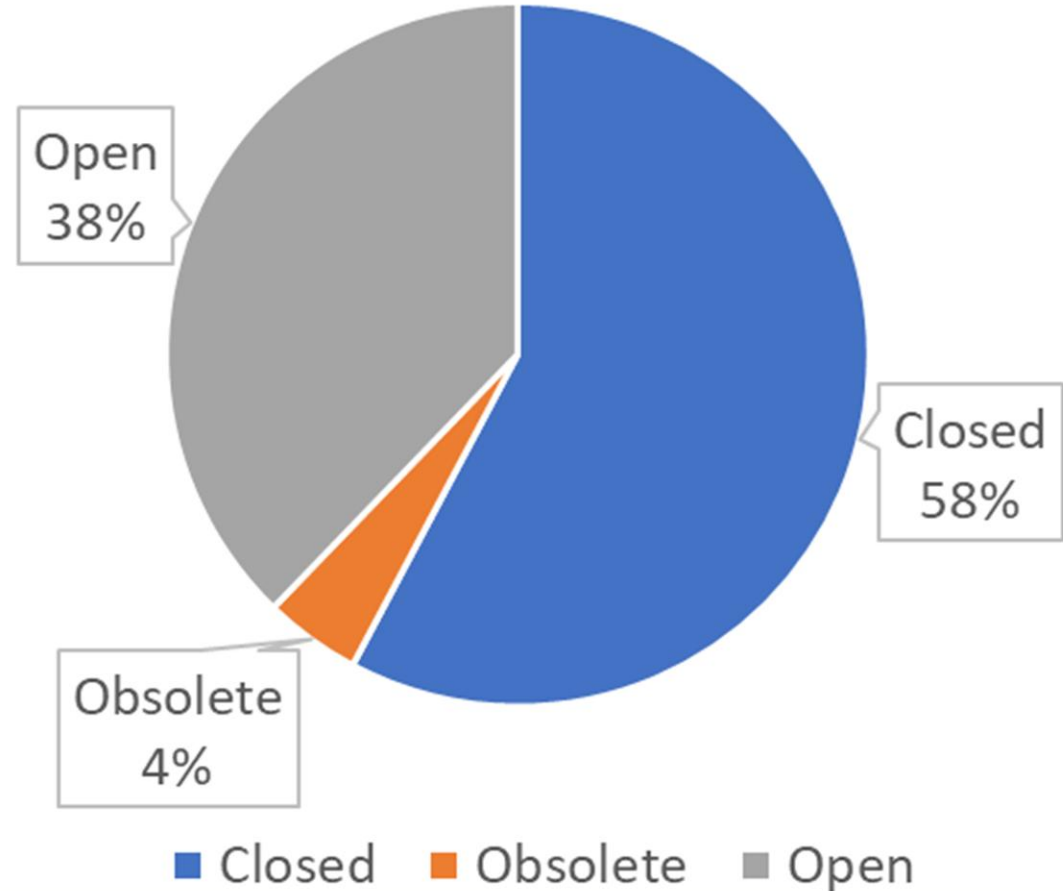
- ❑ PROGRAMME OPERATIONS
- ❑ SUPPLY CHAIN DELIVERY
- ❑ ETHICS OFFICE
- ❑ RISK MANAGEMENT
- ❑ HUMAN RESOURCES
- ❑ COMMUNICATION
- ❑ SECURITY
- ❑ LEGAL OFFICE
- ❑ OIGI
- ❑ OMBUDSMAN OFFICE



**Supporting field-level implementation**




# Overall Progress (as of April 2025)

- Six main recommendations
- 45 actions
- **Actions due in 2024:** 78.7 percent are completed (24 actions closed, 2 rendered obsolete and 7 are open)
- **Actions due in 2025:** two are already closed
- In summary, **26 actions are closed**, 2 are deemed no longer relevant and **17 are open**, representing a **57.7 percent implementation rate**



# Towards Closing the Evaluation's Recommendations

---

Recs/sub-recs	# of Actions	 Closed	 Open	 Obsolete
1 (2 sub-recs)	8	6	1	1
2 (4 sub-recs)	10	6	4	
3 (4 sub-recs)	9	6	3	
4 (1 sub-rec)	2		1	1
5 (3 sub-rec)	12	8	4	
6 (2 sub-rec)	4		4	

# PSEA: Delivering Impact, Confronting Challenges

## ✓ Key Areas of Impact

- A strong **tone from the top** reinforces PSEA as a non-negotiable commitment
- PSEA **institutionalized** as a cross-cutting organizational responsibility
- PSEA **integrated** into core systems, policies and programming tools
- Enhanced **partners' engagement** on PSEA commitments
- Driving **collective impact**: WFP's Contribution to PSEA Across the System

## ⚠ Key Challenges

- Funding cuts, heightened SEA risks
- Shrinking resources, growing demands
- Erosion of field level protection capacity
- Sustaining PSEA: a resource challenge for our partners





Thank you