



World Food Programme

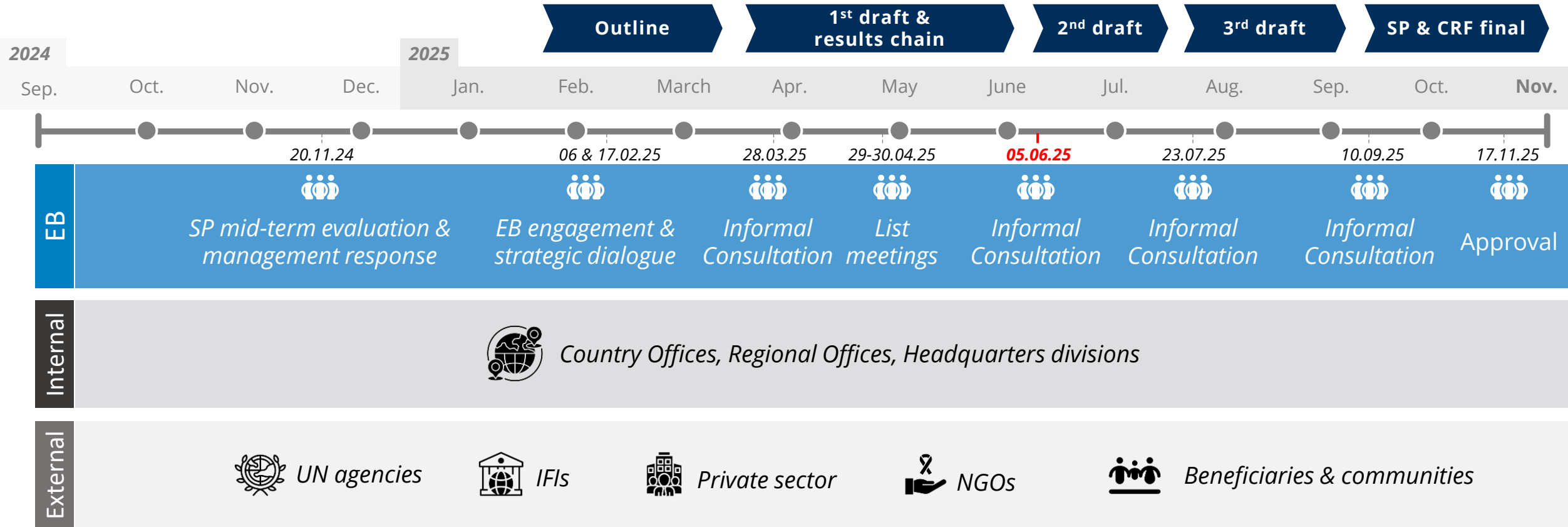
SAVING
LIVES
CHANGING
LIVES

Strategic Plan 2026-2029 | First Draft

Executive Board Informal Consultation

June 5th, 2025

Strategic plan and CRF development timeline



Evidence base

- OEV** Mid-term evaluation of WFP's SP (2022-2025)
- EPRI** Stakeholder mapping & WFP's comp. advantage
- APP** Context analysis
- IDS** Political economy of hunger
- BCG** Strategic foresight

Strategic plan 2026-2029 | Direction of change



Top priority – **emergency preparedness and response**



Emphasis on **reducing needs** to avoid assisting the same people year after year



Streamlining and **focusing** action – 3 strategic outcomes



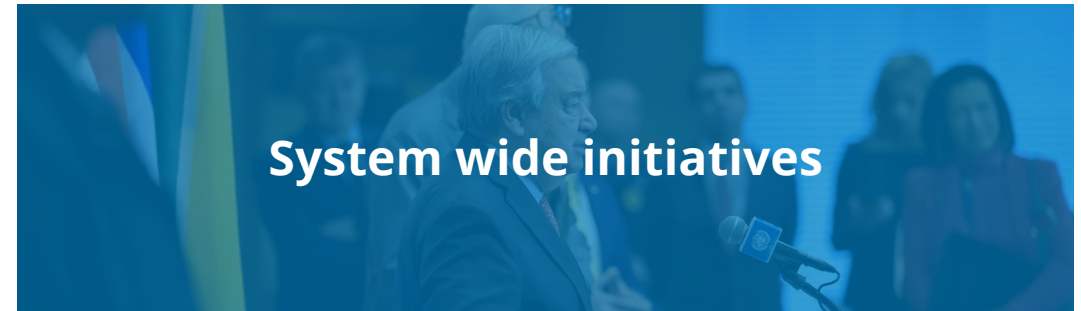
Fostering **integration** and **interconnectedness**



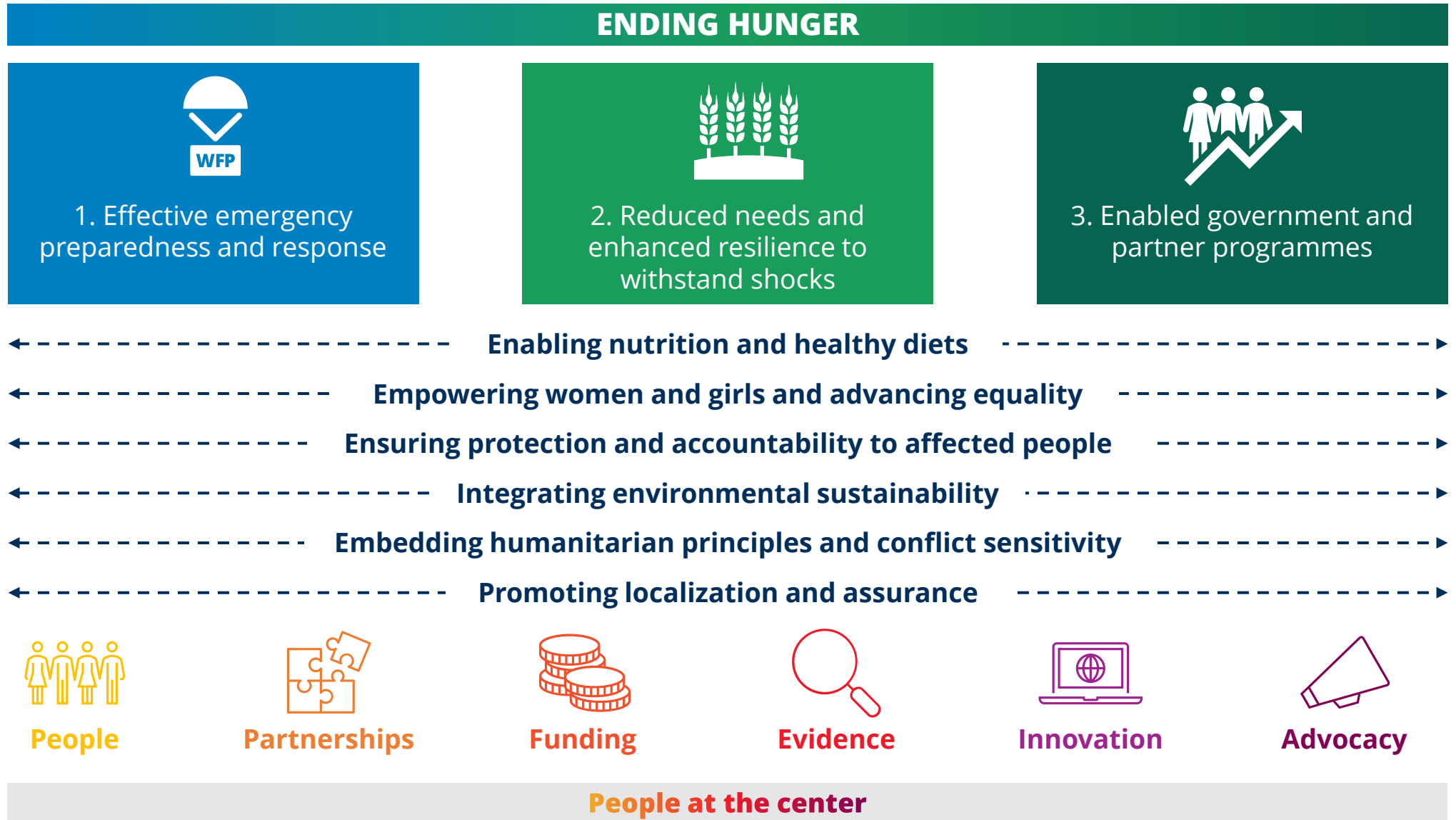
Pursuing **scale, efficiency, complementarity, and impact**



Key additions to initial outline



Strategic plan framework



Strategic outcome 1

Effective emergency preparedness and response

Strategic focus

Reach people with **high quality assistance** that is better tailored to their needs

Deliver assistance to the **right people, at the right time and in the right way**

What is included



Emergency preparedness, anticipatory action, and early action



Assistance to meet urgent food needs



Prevention and management of acute malnutrition

Strategic outcome 2

Reduced needs and enhanced resilience to withstand shocks

Strategic focus

Reduce humanitarian needs for people and communities that face protracted and recurring acute food insecurity

Invest in **integrated, scalable and sustainable solutions** and design programmes based on **system-thinking**

Focused approach on **WFP's comparative advantage**, while **supporting partners** and multi-sectoral approaches

What is included



Asset creation and skill development for livelihood opportunities



Access to weather info, microinsurance, and other services for increased resilience



Access to nutritious products and services that prevent and manage malnutrition

Strategic outcome 3

Enabled government and partner programmes

Strategic focus

Support government programmes and systems to better:

- a) Reach the **most vulnerable** people
- b) Assist people to **manage risks**
- c) Address **food insecurity** and malnutrition

Strengthen the work of **partners** through the provision of common services

What is included



Support for nationally-owned school meals



Strengthened national programmes and systems



UNHAS, UNHRD, and other interagency and on-demand services

Cross-cutting priorities

Enabling nutrition and healthy diets

Ensure assistance provides adequate nutrients and helps prevent malnutrition

Empowering women and girls and advancing equality

Assist and empower women and girls and advance equitable access for people with disabilities, displaced populations, and other marginalized groups

Ensuring protection and accountability to affected people

Deliver safe and dignified assistance that does no harm, in consultation with people served

Integrating environmental sustainability

Reduce WFP's environmental footprint while ensuring operations safeguard ecosystems and people served

Embedding humanitarian principles and conflict sensitivity

Build trust, manage risks, and gain access to people in need, while avoiding unintended impact

Promoting localization and assurance

Support locally-led efforts responding to the unique needs of affected people, while upholding visibility, accountability, and transparency

Enablers



People

Invest in the **right skills and capacity** across WFP's workforce to ensure it can deliver effectively in a complex and evolving global context



Partnerships

Nurture and strengthen partnerships that bring **complementarity expertise** and act as levers to end hunger, connecting WFP's local convening power to global opportunities



Funding

Protect, grow and diversify funding by deepening partnerships with traditional donors, expanding support from programme countries, and engaging the private sector



Evidence

Use robust and timely **evidence to guide decisions** and programme design, mobilize resources, and ensure accountability



Innovation

Leverage **innovation and technology** to enhance operational efficiency and effectiveness by empowering all levels of the organization, scaling impactful solutions, and fostering partnerships



Advocacy

Bring **WFP's unique voice** to drive relentless action on behalf of the world's hungriest and most vulnerable people

Thank you