



Risk Management Division

# Evaluation Recommendations Implementation Status Report 2024

May 2025



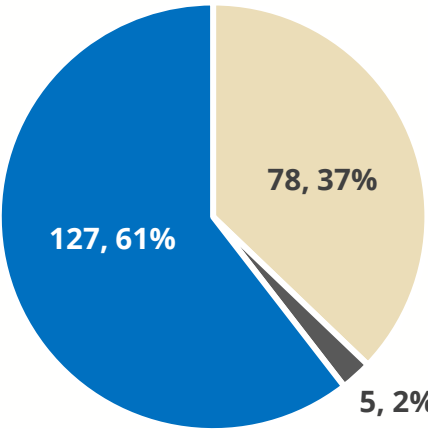
WFP

World Food Programme

SAVING  
LIVES  
CHANGING  
LIVES

# Implementation status of evaluation recommendations due for closure in 2024

## 61% of Recommendations Implemented



- **210 recommendations** (requiring 749 actions) were due in 2024
- **83% of the 749 actions** were completed

### KEY CHALLENGES

#### Contextual barriers

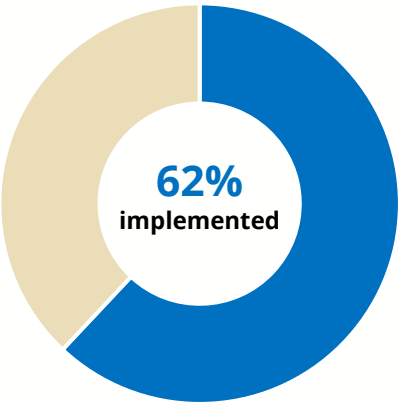
- Dynamic nature of operating environments
- Dependency on external factors

#### Operational barriers

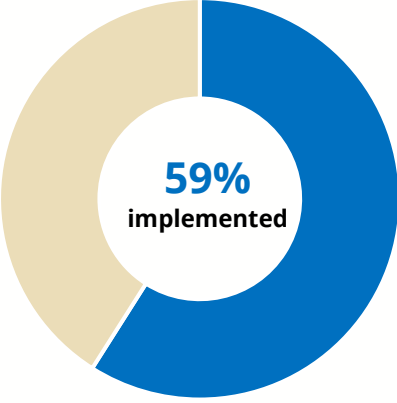
- Capacity and financial resources constraints
- Organizational restructuring
- Limited verification time and closure in system
- Some recommendations require better clarity

## Implementation by Evaluation Category

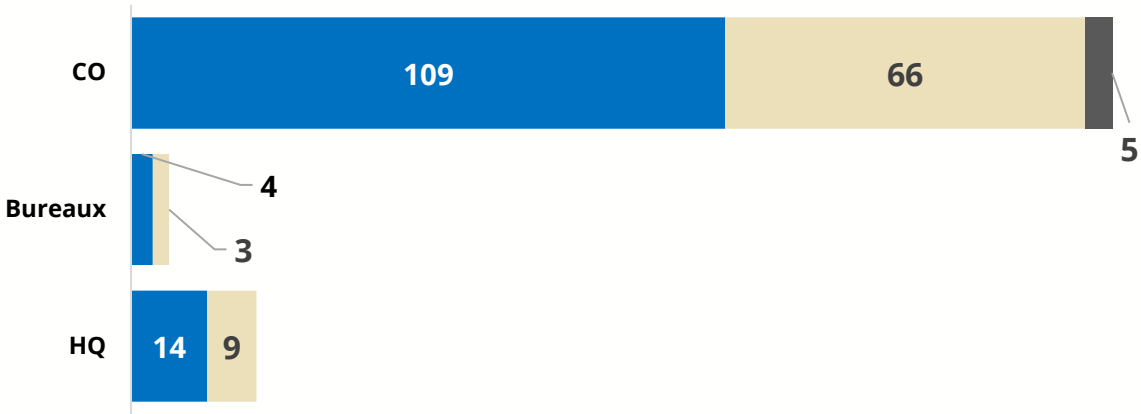
Centralized Evaluations  
(90 recommendations)



Decentralized Evaluations  
(120 recommendations)



## Implementation by Lead Office



# Key Thematic Insights from Recommendations due for Closure in 2024

WFP conducted a thematic analysis of the 210 recommendations due for closure in 2024 and focused on significant risk areas addressed in the Management review of significant risk and control issues, 2024



## Targeting

- Community-driven
- Government-led
- Adaptive and Risk-responsive
- Inclusive
- Data-driven



## Monitoring

- Robust monitoring systems
- Strong data quality, collection, and utilization
- Integration of cross-cutting issues
- Strong market and performance monitoring



## Community Feedback Mechanism

- Robust systems and tools
- Enhanced accountability through stakeholder engagement and partnerships



## Workplace Culture and Talent Management

- Well-structured and efficient country office structure
- Human Resources Division to address recruitment challenges
- Protection from sexual exploitation and abuse



## Cooperating Partner Management

- Strong collaboration with national governments
- Mainstreamed conflict sensitivity
- Expansion of cooperation with civil society

# Ongoing and Outstanding Recommendations – Overall Status

## Overview of aging recommendations

- Between 2022 and 2024, **81% of recommendations** due for closure were implemented, the **highest three-year average** in the past three years
- All recommendations **due prior to 2021** have been closed

## Outstanding recommendations

- 327 recommendations are ongoing and tracked through 1,639 actions of which 692 (42%) have been closed
- 147 (45%) of the 327 ongoing recommendations are overdue **since 2021**, mostly from country offices

Ongoing evaluations recommendations by original deadline (year)

