



World Food Programme

SAVING LIVES  
CHANGING LIVES

# Executive Board

## Regional Bureau for Western Africa

2024 November

# THE WESTERN AFRICA REGION IS AT THE BRINK. SPREAD OF CONFLICT & HIGH VULNERABILITY TO CLIMATE CHANGE

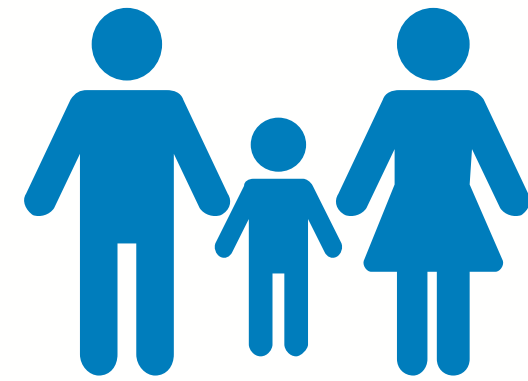


## SHOCKS & STRESSORS

1. Conflicts/  
displacements
2. Climate disasters  
(droughts/floods)
3. Challenging  
macroeconomic  
situation

*Flooding situation in Maiduguri, Borno State, Nigeria on September 12, 2024*

# SAVING LIVES REMAIN OUR NUMBER 1 PRIORITY



**6M PEOPLE ASSISTED**  
of the 7M prioritized  
(86%) during the lean  
season



## Burkina Faso

336,742 people = **80%** **IPC4/5**

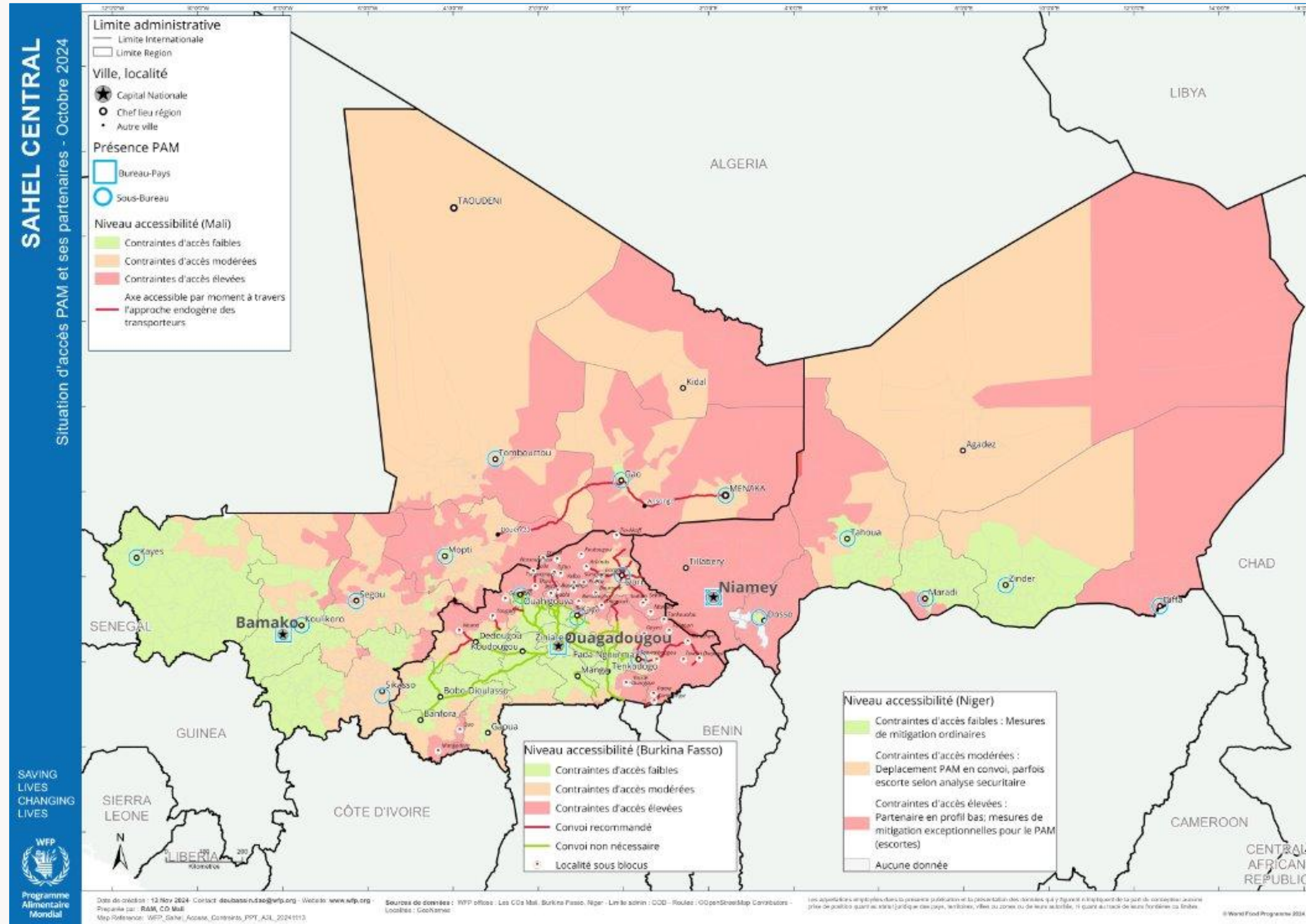
## Mali

117,729 people = **100%** **IPC4/5**

## Niger

126,172 people = **100%** **IPC4/5**

# DIFFICULTIES REMAIN TO REACH ALL POPULATIONS IN DIRE NEEDS



**COMPLEX  
HUMANITARIAN  
ACCESS**

**DISRUPTION OF  
SUPPLY ROUTES**

# HIGHEST STANDARDS OF ASSURANCE AND ACCOUNTABILITY ARE REQUIRED

## INCREASED ASSURANCE LEVELS

- Full Digitalization of operations
- Monitoring & issue escalation system
- Commodity management
- Cooperating partner management

# ENHANCED PREVENTION, PREPAREDNESS AND ANTICIPATORY ACTION EFFORTS ARE ONGOING

EARLY WARNING

ANTICIPATORY ACTION

MACRO INSURANCE

MICRO INSURANCE

Partnering with



ECOWAS  
CEDEAO



THE WORLD BANK  
IBRD • IDA



# TRANSFORMATIVE SOLUTIONS EXIST TO BUILD RESILIENCE AND REDUCE HUMANITARIAN NEEDS

## CLIMATE RESILIENT FOOD SYSTEMS

COMMUNITY RESILIENCE



VALUE CHAIN DEVELOPMENT



## SOCIAL PROTECTION / SCHOOL FEEDING



# A UNIQUE OPPORTUNITY FOR PARTNERS TO COME TOGETHER, AND MOVE BEYOND AID

**1. LONG-TERM PROVEN SOLUTIONS**

**2. RENEWED PARTNERSHIPS**

**3. ADVOCACY & COLLECTIVE ACTION**

**4. INCREASED FUNDING**



Resourcing  
outlook

Net  
requirement  
**USD 776 M**

Funding gap  
**55 %**