



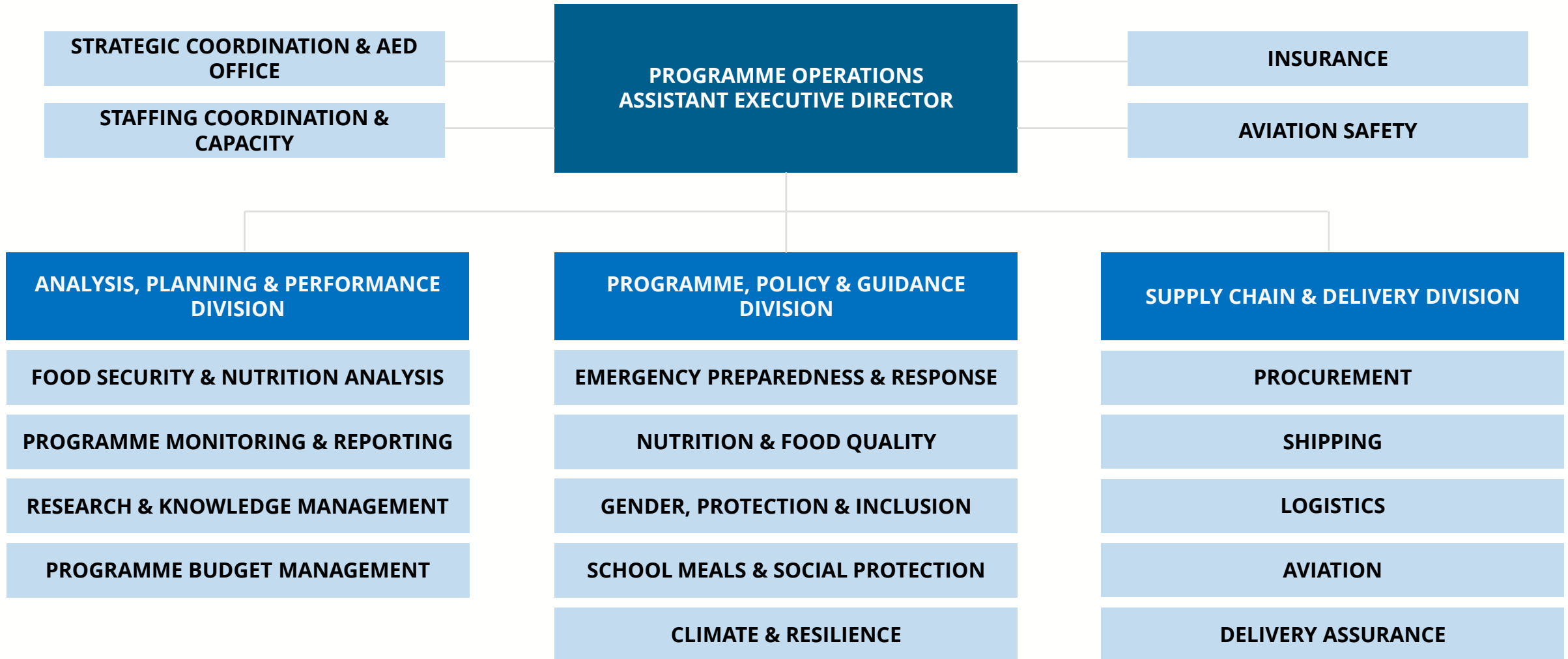
# Introduction to the Programme Operations Department



World Food  
Programme

SAVING  
LIVES  
CHANGING  
LIVES

# PROGRAMME OPERATIONS DEPARTMENT




# DEPARTMENTAL PRIORITIES

## Primary Focus:

**Action the WFP Strategic Plan**, by delivering the Plan's five outcomes, seven guiding principles, four cross-cutting priorities and six enablers

## In addition to three further priorities:

- 1** Prioritize assistance for the most vulnerable, with strong field support  **Help Country Offices to streamline and strengthen programmes**
- 2** Focus on where WFP can make the greatest difference, with integrated responses and partnerships  **Ensure programme quality**
- 3** Assurance measures that improve accountability  **Mainstream stronger assurance measures**

# PROGRAMME POLICY & GUIDANCE DIVISION

## KEY FUNCTIONS

1

### ACTIONING THE STRATEGIC PLAN

Provide high-level, cohesive direction to guide WFP's programmatic work in the field

2

### OVERSEEING OUR POLICY PORTFOLIO

WFP's policies are the 'normative framework' in which we work

3

### SUPPORT FOR THE FIELD

Strategic and technical guidance for Country Offices/Regional Bureaux on policy issues, high-quality implementation, and normative work



World Food Programme  
Programme Alimentaire Mondial  
Programa Mundial de Alimentos  
برنامج الأغذية العالمي

**Executive Board**  
First regular session  
Rome, 28 February–2 March 2022

Distribution: General

Date: 18 February 2022

Original: English

Agenda item 4

WFP/EB.1/2022/4-B/Rev.1

Policy issues

For approval

Executive Board documents are available on WFP's website (<https://executiveboard.wfp.org>).

#### WFP gender policy 2022

##### Executive summary

WFP envisions a world with zero hunger where everyone has equal opportunities, equal access to resources and an equal voice in the decisions that shape their lives, including as individuals within households, communities and societies. The pursuit of gender equality and women's empowerment is central to WFP's mission of saving lives and changing lives and supporting countries in their quest to achieve the Sustainable Development Goals.

The goal of the updated gender policy is to ensure that WFP optimizes its presence, role and capabilities, in partnership, to advance gender equality and empower women. WFP's ability to achieve its strategic objectives depends on it delivering food and nutrition assistance in a manner that addresses the differing needs, priorities and experiences of the women, men, girls and boys with whom it works. This document therefore builds on experience and efforts over the decades to bridge the gender gap in food security and nutrition.

# PROGRAMME POLICY & GUIDANCE DIVISION

## POLICY FUNCTION

- WFP currently has over **32 policies** in effect under the 2022-2025 Strategic Plan.
- An update of the portfolio of policies is submitted annually and can be found as the “**Compendium of Policies**” on the Executive Board website.
- The **Policy Cycle**:
  - Identify need
  - Formulation
  - Implementation & Resourcing
  - Evaluation



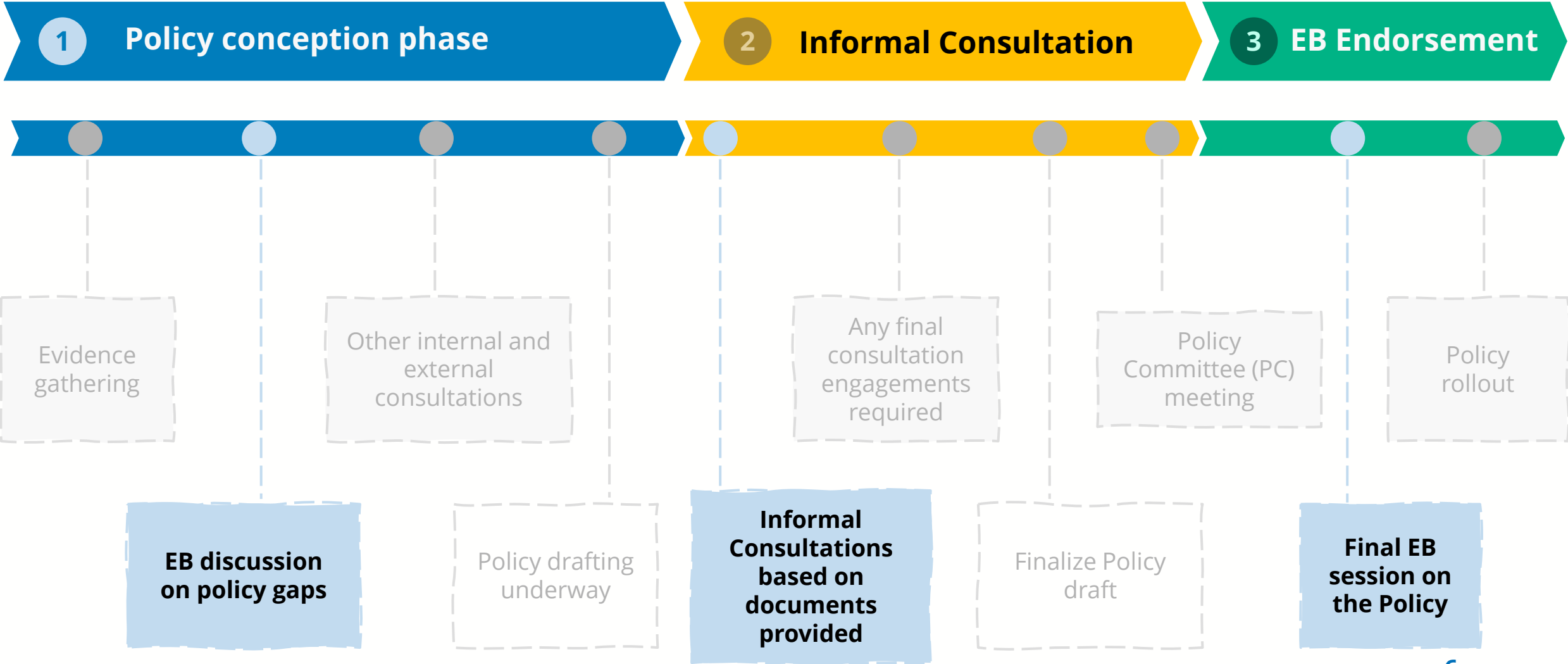
### Recent and ongoing policy work includes:

- Climate Change Policy
- Resilience Policy
- School Feeding Policy
- Policy on policy formulation
- Localization policy








# HOW THE EXECUTIVE BOARD ENGAGES IN POLICY MAKING

## KEY PHASES:



# SUPPLY CHAIN & DELIVERY DIVISION

## KEY FUNCTIONS

				
PLAN	PROCURE	TRANSPORT	STORE	DELIVER
<p>Sourcing &amp; delivery planning</p> <p>Optimized allocation of supply</p> <p>Optimization of operations' design</p>	<p>Food</p> <p>Goods &amp; services</p> <p>Cash &amp; Vouchers</p>	<p>Ocean</p> <p>Port operations</p> <p>Land</p> <p>Aviation</p>	<p>Warehousing</p> <p>Prepositioning</p> <p>Humanitarian response hubs</p>	<p>In-kind distribution <b>Cooperating Partners</b></p> <p>Cash &amp; Vouchers transfers <b>Direct to Beneficiaries</b></p> <p>Service Provision <b>National Gov't Capacity Strengthening</b></p>

**REINFORCED ASSURANCE AND RISK MANAGEMENT**

# SUPPLY CHAIN & DELIVERY DIVISION

## IN NUMBERS (2023)

**USD 2.9 BILLION**

distributed to people in need via cash, commodity voucher or value vouchers

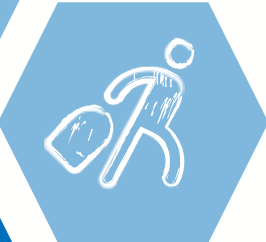


**3.6 MILLION MT**

of food delivered

**USD 3 BILLION**

worth of food, goods and services procured



**400,000 PASSENGERS**

transported

**22.3 MILLION KM**

travelled by WFP trucks in 2023  
*(or 29 journeys to the moon and back)*



**1,442 PARTNERS**

supported by WFP

**724 LOCAL NGO PARTNERS**

delivering unconditional resource transfers and other support to local communities





# ANALYSIS, PLANNING AND PERFORMANCE DIVISION

## KEY FUNCTIONS



### Food Security and Nutrition Analysis

Analyzing food security challenges to forecast risks and design effective interventions.



### Programme Budget Management

Ensuring efficient financial planning and budgeting, maximizing WFP's resources and mitigating risks.



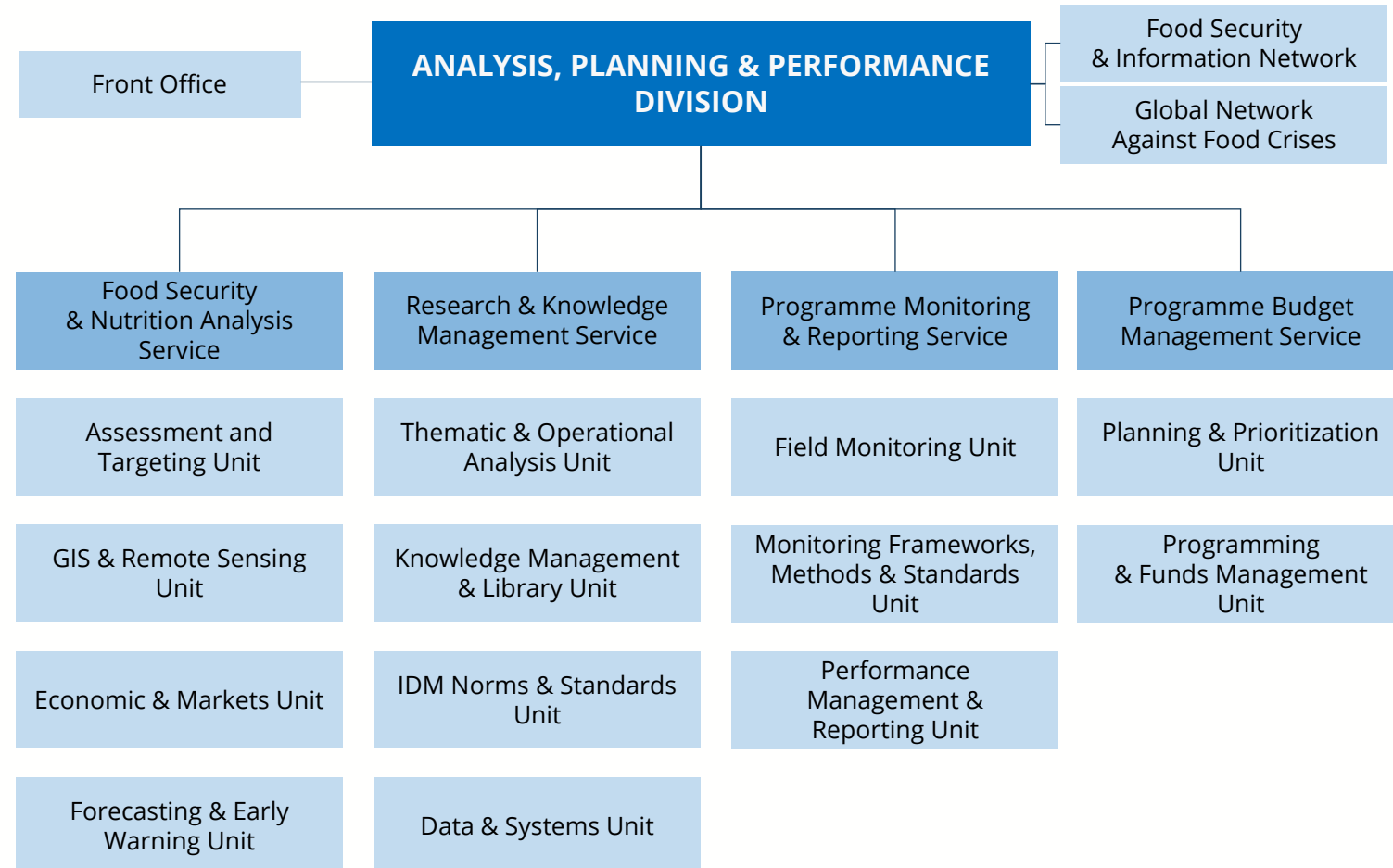
### Programme Monitoring and Reporting

Monitoring results and implementation of Country Strategic Plans to adjust programmes



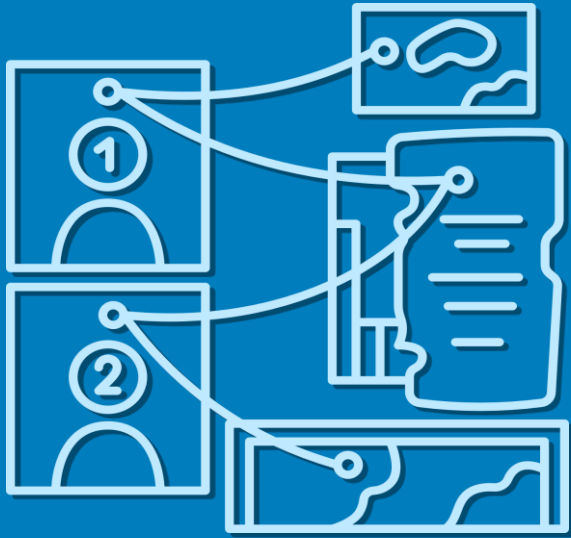
### Research and Knowledge Management

Driving food security innovation through research, data sharing, and partnerships to improve interventions.



# ANALYSIS, PLANNING AND PERFORMANCE DIVISION

## EMPOWERING WFP WITH EVIDENCE-BASED INSIGHTS



The power of evidence to help reach Zero Hunger

The **Division's mission** is to provide **credible, relevant, and timely evidence** for strategic and operational decision-making, advocacy, resource management, and accountability to beneficiaries and donors:

- Integration of data and analysis across the programme lifecycle
- Support WFP's operations with data and insights
- Ensure programme design and budgets are informed by evidence, community feedback, and are continuously monitored and refined.

# THANK YOU

