



World Food Programme

SAVING LIVES
CHANGING LIVES



Protection and AAP in emergency and development settings

WFP COLOMBIA

JULY 2023



Colombia's multiple challenges: some facts



- **51.5 million people**
- **Key recipient country for migrants in the region (3 million with intention to stay)**
- Seventh country in the world with **highest inequality** (54.2 Gini index)
- **Conflict, violence, affectations and on-going displacement**
- Fourth country worldwide with the **highest vulnerability to disaster risks**
- Most dangerous country worldwide for **environmental and human rights activists**
- **Largest producer of cocaine** worldwide
- **60% cereal import dependency**



Key Protection Risks

Very advanced political constitution integrating international human rights law (1991), however:

Limited state presence in parts of the territory

Ongoing conflict, displacement and confinement

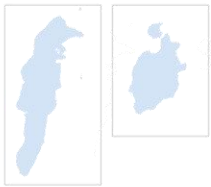
Violence against human rights and social activists

Racial and ethnic discrimination

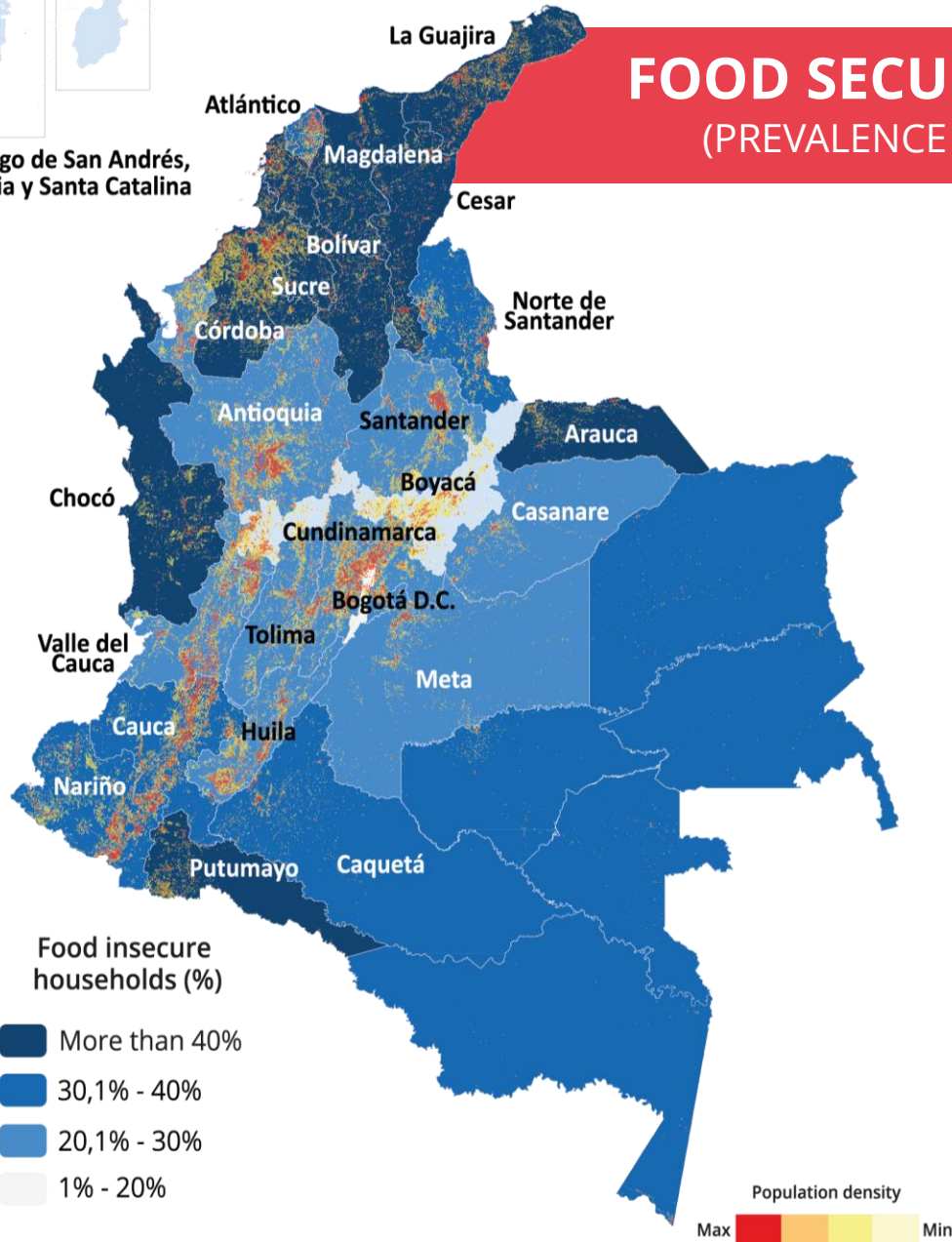
Recruitment, use and utilisation of children and adolescents

Human trafficking

Gender based violence, sexual violence and exploitation



Archipiélago de San Andrés, Providencia y Santa Catalina



FOOD SECURITY SITUATION OF COLOMBIANS (2023)

(PREVALENCE OF FOOD SECURITY AND POPULATION CONCENTRATION)



30% (15,5 M) of the Colombian population moderately and severely food insecure



The highest prevalence of food insecurity is concentrated on the Atlantic Coast, Arauca, Chocó and Putumayo.



The highest number of people affected are concentrated in urban areas: **Bogotá (1,5M), Medellín (650 K), Cali (490 K), Cartagena (421 K) y Barranquilla (327 K).**



40% of the households consume two meals a day or less.



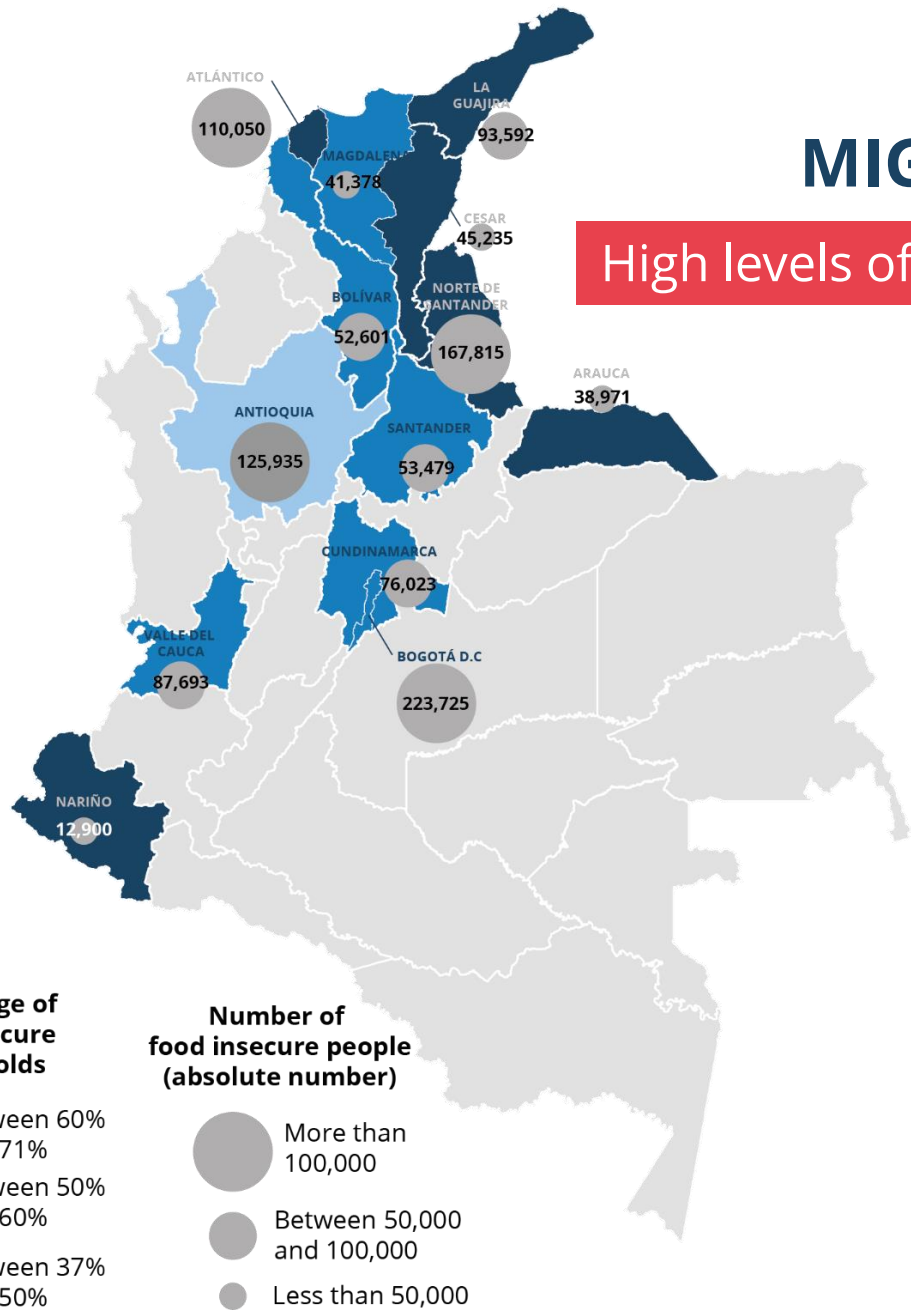
67% of households need to adopt livelihood coping strategies to meet their basic food needs.



Food insecurity is primarily a problem of economic access, **with half of households (46%)** below the national poverty line.

FOOD SECURITY SITUATION OF MIGRANT POPULATIONS IN COLOMBIA

High levels of food insecurity among **host communities** and **migrants**



With intention to settle

52% (1.3m)
are food insecure



Pendular migrants

73% (1.3m)
are food insecure



Migrants in transit

73% (280K)
are food insecure



Colombian returnees

54% (530K)
are food insecure

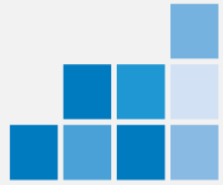


Host communities

43% (430K)
are food insecure

Map 1: Percentage (%) and absolute numbers of food insecurity (migrants with the intention to settle)

WFP Country Strategic Plan, 2021-2024



PEACEBUILDING AND RESILIENCE

1

- Assets Creation
- Livelihoods
- Climate Change Adaptation
- Peacebuilding



CRISIS RESPONSE

2

- Migration
- IDPs and victims of conflict
- Natural disasters
- COVID-affected people
- Emergency School Feeding

3

- Socio-economic Integration



CAPACITY STRENGTHENING

4

- Public Policy
- EPR
- Social Protection
- Indigenous People
- Innovation

5

- School Feeding

6

- Nutrition



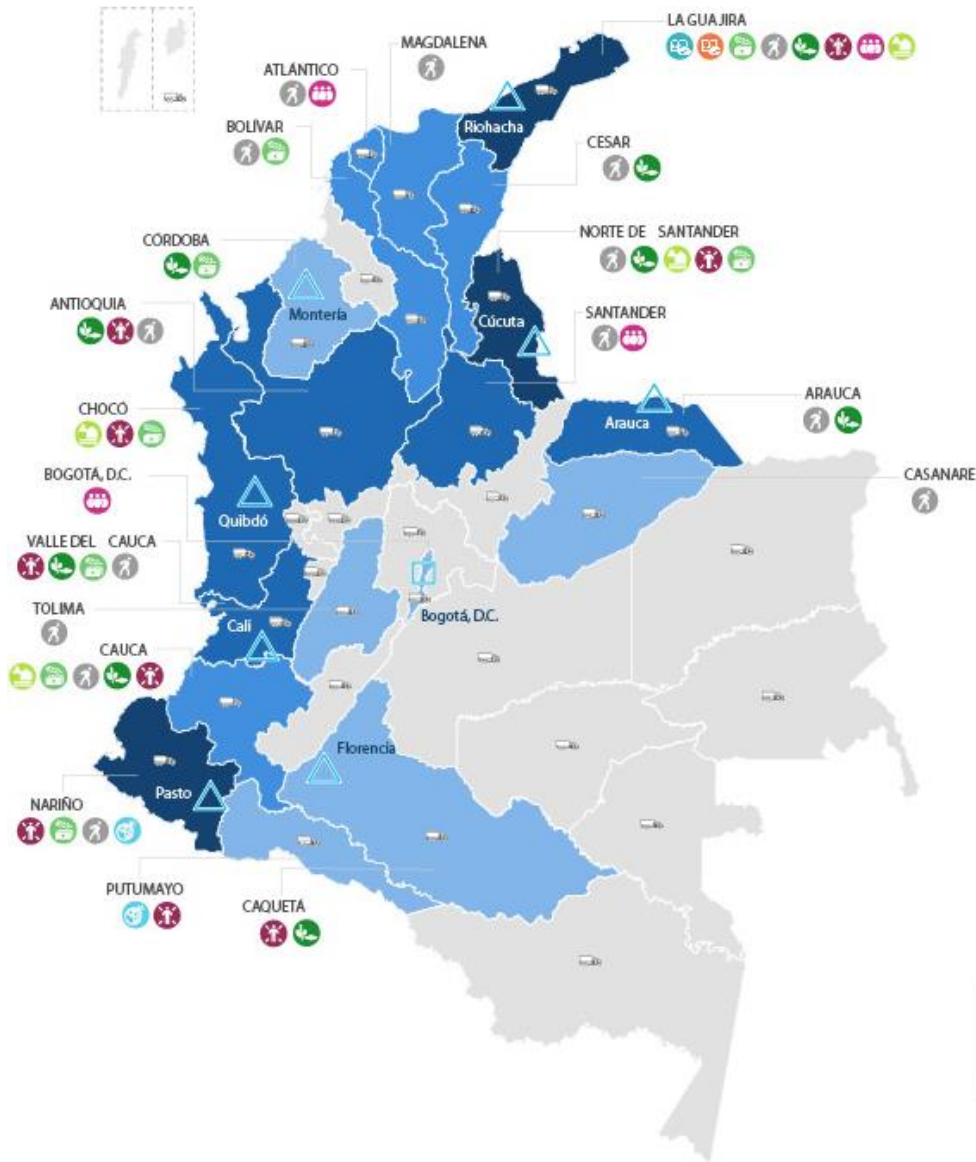
SERVICE PROVISION

7

- Logistics Services
- Procurement Services
- Data Management

WFP operations in Colombia

WFP in numbers 2023 (January to May)



- Intervention**
- Prevention of malnutrition
 - Assistance for migrant population
 - Assistance for population affected by COVID-19
 - Assistance for disaster affected population
 - Assistance for conflict victims
 - School feeding for Colombians
 - School feeding for migrants
 - Early recovery
 - Strengthening of livelihoods
 - Adaptation to climate change
 - Socio-economic integration

- WFP presence**
- Central office
 - Field office
 - Unidades móviles ICBF Assistance
- Beneficiaries***
- 63.000 - 129.000
 - 21.500 - 63.000
 - 6.000 - 21.500
 - 400 - 6.000
- *January - May 2023



647,881

beneficiaries assisted in 2023



436,183

Migrants, Colombian returnees and members of host communities assisted



116,859

People affected by violence and natural disasters received emergency assistance



75,584

Girls and boys, including 15,623 migrants assisted through the School Feeding Programme



14,584

Smallholder producers with strengthened technical capacities on climate change adaptation and early recovery



1,527

Beneficiaries of the socioeconomic integration strategy



1,293

Beneficiaries of climate change adaptation projects

Total beneficiaries in 2022: 1.6 Million

WFP's Protection strategy and activities in Colombia



Reducing protection risks through community centred approaches

- Systematic risk analyses and close interaction with beneficiary communities
- Community empowerment, investing on enhancing their resilience to hazards (adoption of adaptation strategies, sustainable agricultural practices, diversification of livelihoods)
- Enhanced early warning (conflict, natural and climatic hazards, socio-economic shocks)
- Promoting protection by presence in conflict areas
- Strategies of social inclusion (peace process, schoolfeeding, social protection, migration)



Effective Community Feedback Mechanism (CFM)

- Toll-free assistance line and other secure communication channels
- 44,232 requests received in 2022
- Data-driven decisions over operations



Gender equality, GBV and PSEA

- Activities that address gender inequalities and promote gender inclusion
- Reporting mechanisms and training for protection from sexual exploitation and abuse (PSEA)
- Trainings in Gender-Based Violence (GBV) prevention and response



Strengthening of the social protection systems

- Improving the efficiency and effectiveness of existing social protection programmes
- School feeding programme implemented in settings with a high risk of corruption



Engaging local stakeholders and partners

- Close collaboration with local stakeholders, including community members, local authorities, civil society and partner organizations
- Local stakeholders as partners involved in decision-making
- Advocacy efforts in inter-institutional coordination fora

Some examples of good practice



Good practice 1
Oportunidades Pacíficas
Mujeres Rurales
(Rural women)



Good practice 2
Protection by presence
in conflict areas



Good practice 3
Strengthening national
social protection systems
(Sisbén)



Good practice 1

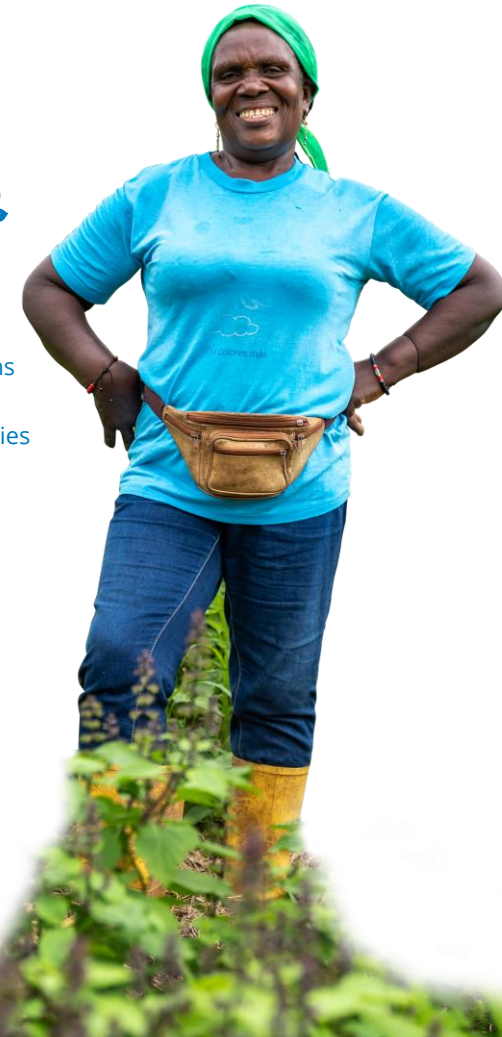
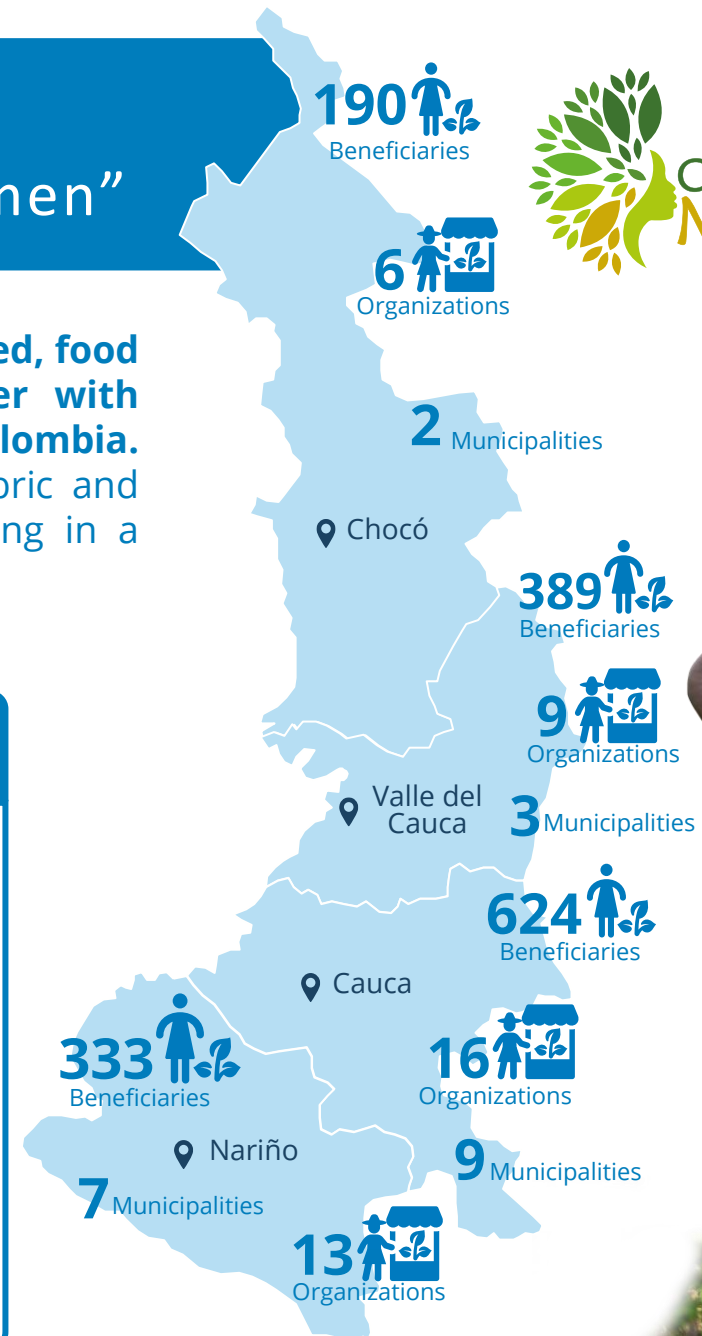
“Peaceful Opportunities - Rural Women”

“Peaceful Opportunities - Rural Women” is a flagship community based, food security and recovery programme implemented by WFP together with Women's Organisations of small producers in the Pacific region of Colombia. The programme seeks to promote food security, re-establish social fabric and provide opportunities for Afro-descendent and Indigenous women living in a conflict affected area.



Protection activities

- Protection risks analysis updated and prevention measures implemented
- Local committees in place and accountable
- GBV trainings and derivation routes identified
- Women's empowerment and new masculinities results
- CFM toll-free hotlines and PSEA policy informed and with specific TORs in place
- Local governments trained in gender mainstreaming and the Rural Women's Act





Good practice 2

Protection by presence

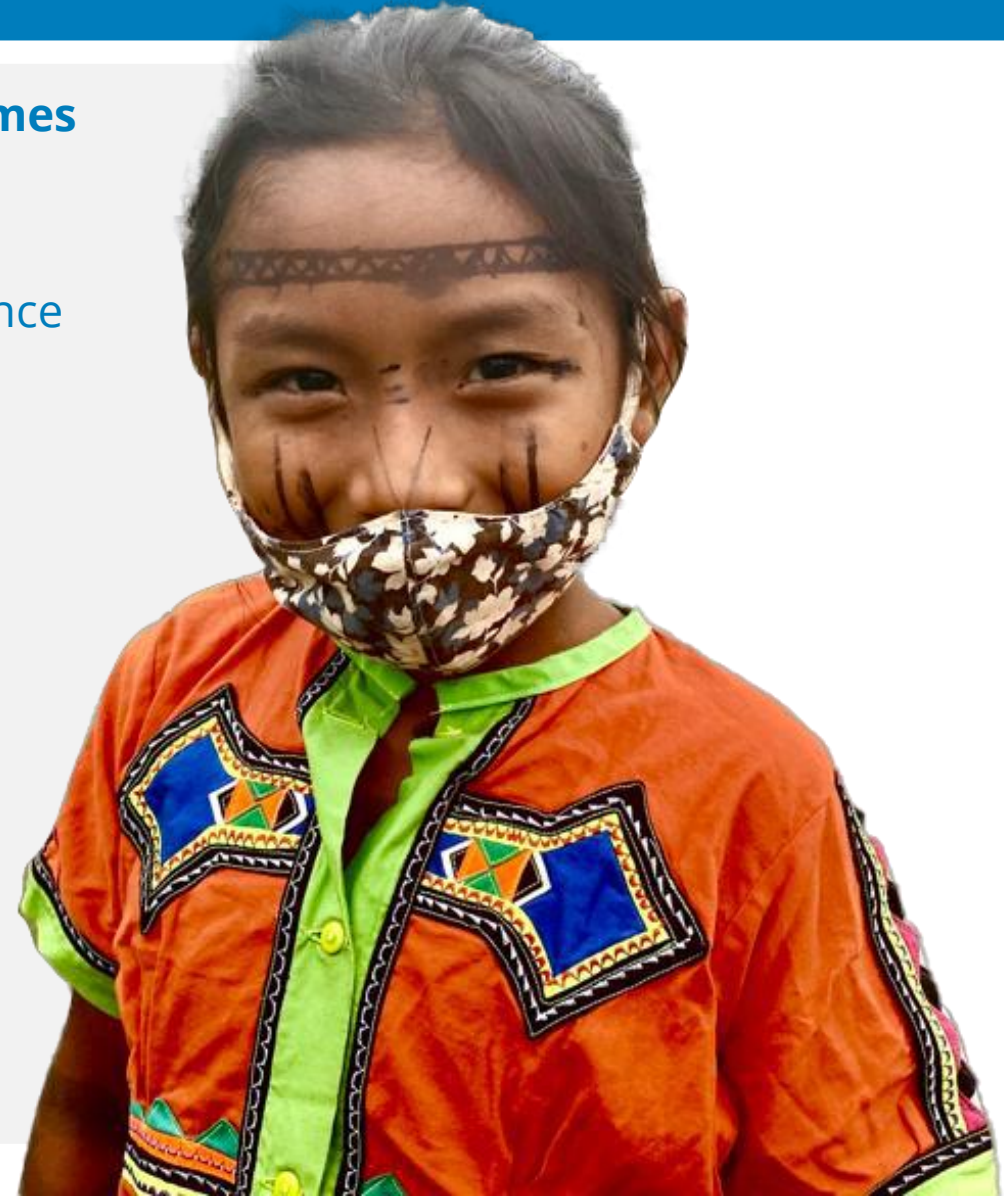
In territories affected by violence and conflict, WFP's programmes are designed to reduce and mitigate protection risks for local communities

In the difficult department of Chocó, a high-risk area, WFP's assistance is a lifeline for communities confined by non-state armed groups.



Protection activities

- Fostering safe, dignified and secure spaces for communities facing risks of violence and abuse.
- Conduction of thorough risk analyses, establishment of protection routes, and updating of protection protocols for priority cases.
- Coordination with organizations at the local level to provide some degree of protection to affected population and a deterrent to those who might attempt to cause harm to them.
- Capacity strengthening processes directed to communities to foster their self-protection measures in topics such as attention routes, resilience and protection risks identification.





Good practice 3

Strengthening National Social Protection systems

WFP has been at the forefront of responding to one of the largest migration crisis in the recent history of LAC, and is working with the government to enhance the capacity, efficiency and coverage of national social protection systems, thus reducing service gaps and promoting inclusion of the most vulnerable

Protection activities

- WFP promotes social protection, aimed at overcoming structural barriers faced by the most vulnerable populations affected by armed conflict, disasters, migration and forced displacement, which compromise their food security and their protection
- WFP promotes social participation, inclusion and equal opportunities, as well as the elimination of discrimination and social inequalities that affect populations in need.
- WFP has identified families with socioeconomic vulnerability and has coordinated their inclusion to social programmes defined by the Colombian Government, contributing to the transparent allocation of social benefits.



500.000 people surveyed (SISBEN)

primarily in underserved municipalities



183.226

People oriented and supported in pre-registration and ETPV* Biometric scheduling.

*Colombian strategy to protect Venezuelan migrants



THANK YOU

TODOS ES POSIBLE

