

WFP  
AT  
60

# ANNUAL PERFORMANCE REPORT 2022



World Food Programme  
Programme Alimentaire Mondial  
Programa Mundial de Alimentos  
برنامج الأغذية العالمي

Executive Board

26 –30 June 2023





# A global food crisis like no other...

Conflict, food prices, climate crisis



Food systems under strain

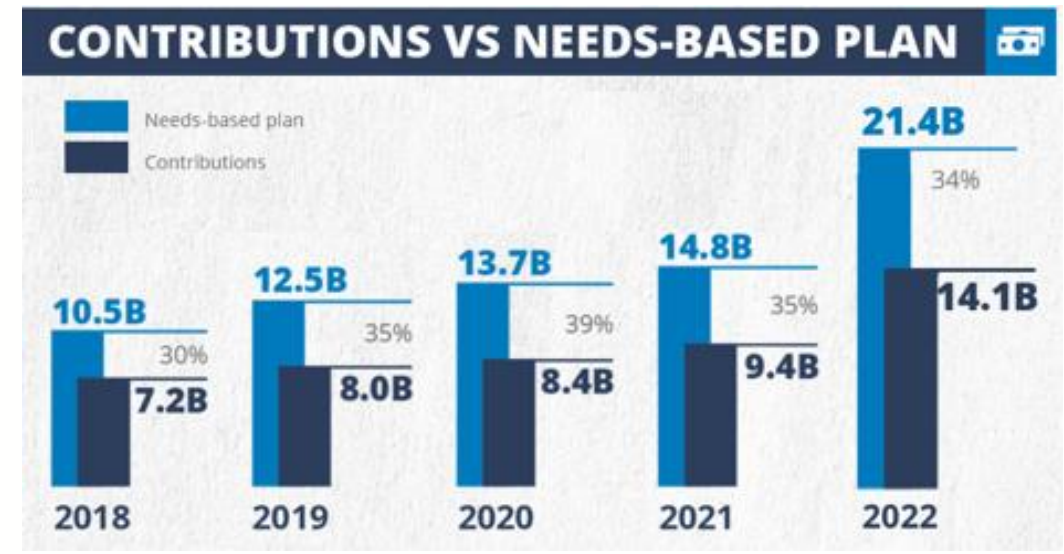


349 million people acutely food insecure



Corporate scale-up to address the **Global Food Crisis** plus 28 other corporate scale-up or corporate attention emergencies

# ...in which donors stepped up contributions to address unprecedented needs



- **Contributions grew 50%** to USD 14.1B in 2022
- Largest donors drove growth in contributions
- Donor base diversified and expanded with **stronger partnerships**

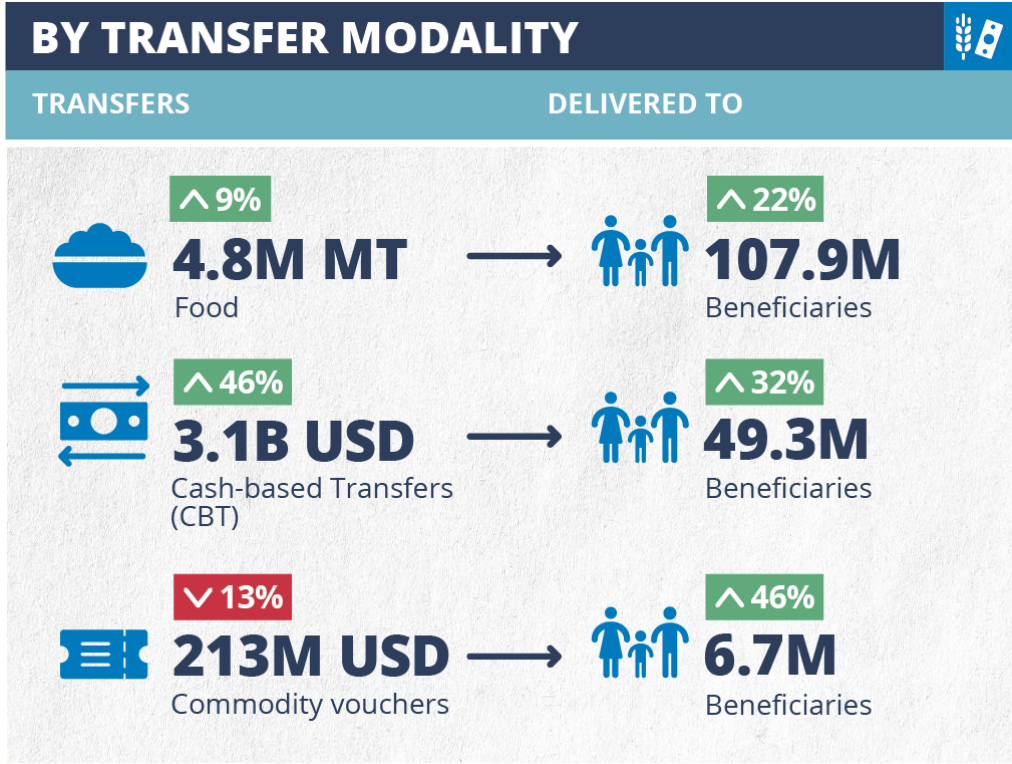
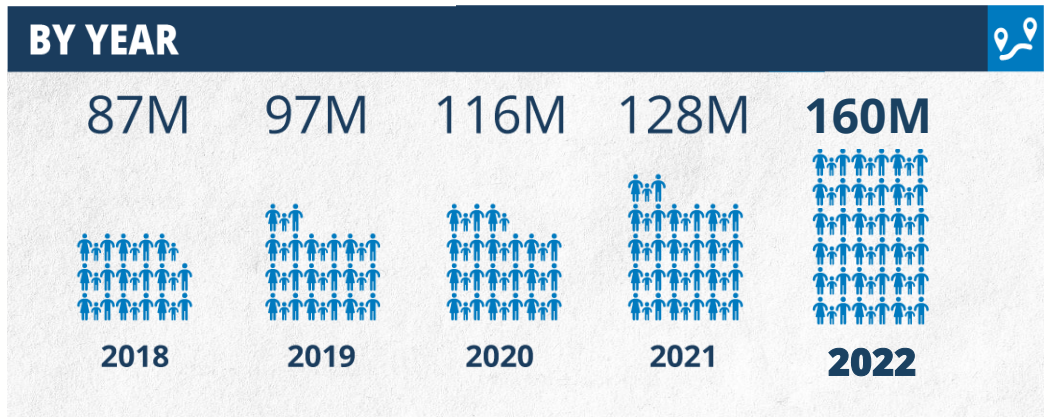
# Beneficiary reach continued to increase



^ 25%

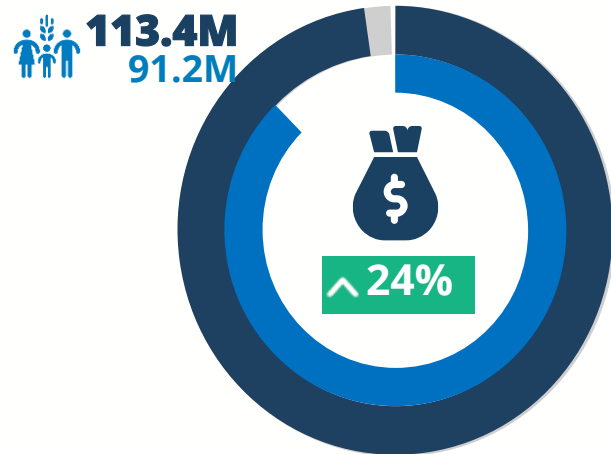
**160M**

Total number of people reached in **2022**



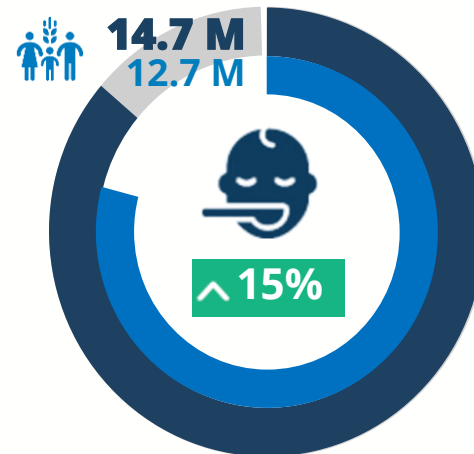
# Beneficiaries were primarily assisted through four main programmes

## UNCONDITIONAL RESOURCE TRANSFERS



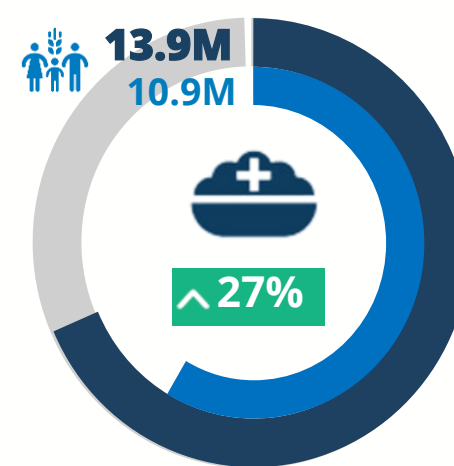
- **Life-saving unconditional transfers** of in-kind food and CBT provided to more than 113 million people

## TREATMENT OF MALNUTRITION

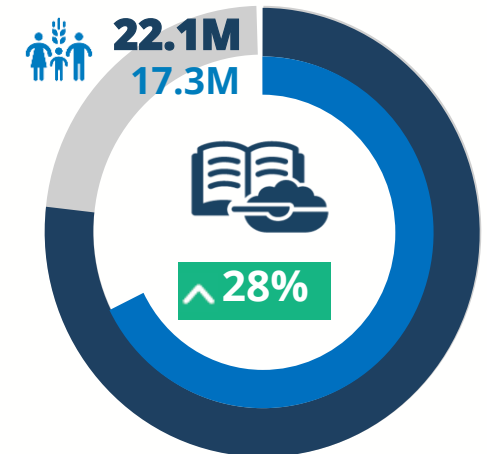


- **28 million people, primarily mothers and children**, benefitting from malnutrition treatment and prevention programmes

## PREVENTION OF MALNUTRITION



## SCHOOL-BASED PROGRAMMES

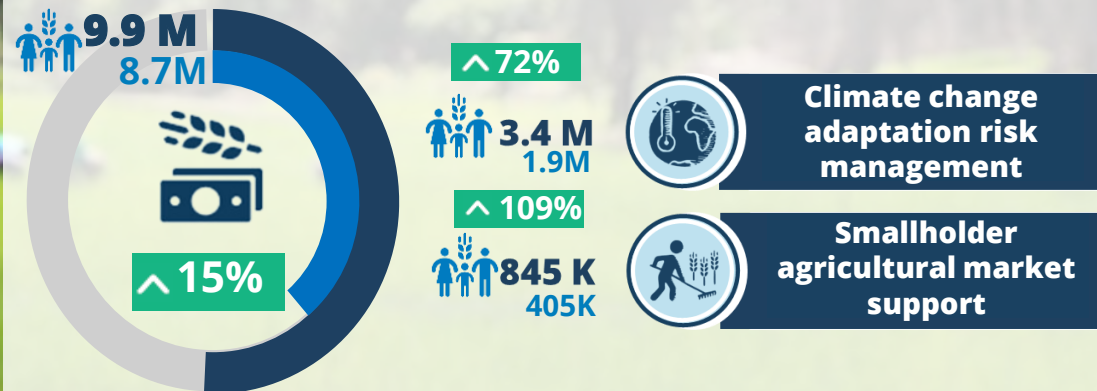


- **20 million children** reached with nutritious school meals and snack or take-home rations



# Resilience activities focused on lessening the impact of crises

## ASSET CREATION AND LIVELIHOODS



- Over 60% of asset creation and livelihoods beneficiaries felt better protected against shocks
- Disaster risk financing assisted 1.8 million people with USD 14.6 million
- Smallholder farmer aggregation systems sold USD 67 million of commodities

^ X% Percentage increase from 2021

# Operational achievements were facilitated by management performance

**KPI 1: Overall progress on CSP Implementation – *affected by the scale of needs globally***

**KPI 2: Emergency Preparedness & Response – *strong results***

**KPI 3: overall achievement of management performance standards, by functional area**

 <p><b>MANAGEMENT</b></p> <p>1 target met 1 target not met 1 approaching target</p>	 <p><b>PROGRAMME</b></p> <p>2 approaching target</p>	 <p><b>SUPPLY CHAIN</b></p> <p>2 target met 1 approaching target</p>	 <p><b>BUDGET AND PROGRAMMING</b></p> <p>1 approaching target</p>	 <p><b>HUMAN RESOURCES</b></p> <p>2 approaching target</p>
 <p><b>ADMINISTRATION</b></p> <p>1 target met 1 approaching target</p>	 <p><b>FINANCE</b></p> <p>1 target met</p>	 <p><b>INFORMATION TECHNOLOGY</b></p> <p>1 approaching target</p>	 <p><b>SECURITY</b></p> <p>1 approaching target</p>	 <p><b>RESOURCE MOBILIZATION, COMMUNICATIONS AND REPORTING</b></p> <p>3 target met 1 approaching target</p>



# Q&A THANK YOU



World Food Programme