



World Food Programme

SAVING LIVES  
CHANGING LIVES

## Somalia Joint Resilience Action

Mr Ahmed Dubow Keinan | Senior Resilience Advisor, Ministry of Agriculture & Irrigation, Somalia

Mr Andrew John Lanyon | Resilience Coordinator, FAO, Somalia



Joint Resilience Action



Food and Agriculture Organization of the United Nations



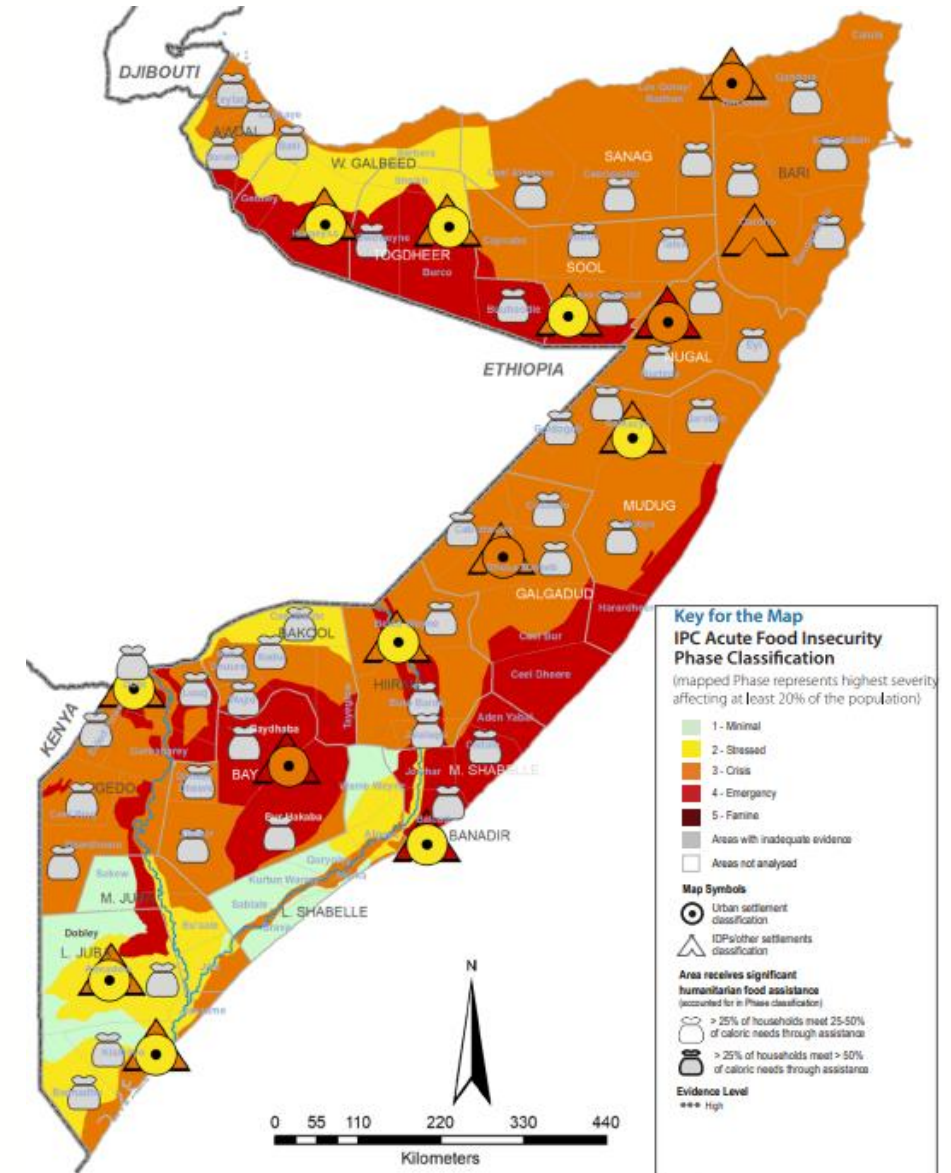
World Food Programme

unicef

# SITUATION OVERVIEW



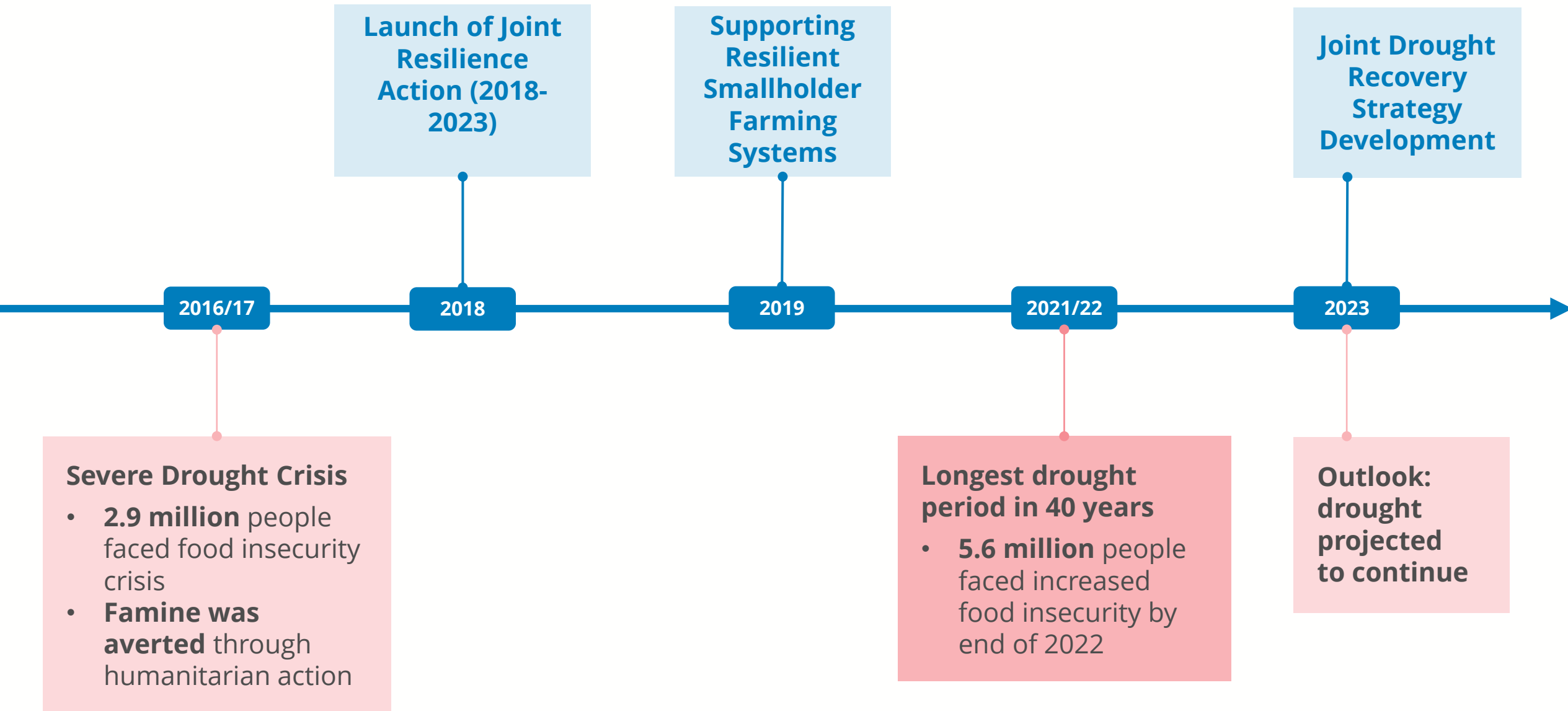
- Frequent and recurrent **climate extremes**, exacerbated by **conflict**
- Somalia has faced five consecutive failed rainy seasons
  - **Over 6 million** face crisis levels of food insecurity across the country
  - **322,000** on the brink of famine
- Although famine thresholds have not been met
  - **1.2 million** people displaced since January 2022
  - **1.5 million** children face acute malnutrition in 2022
  - **6.4 million** people have lack of access to safe water and sanitation
- Government & partners responses:
  - **Large-scale emergency response in 2022/23**
  - **Resilience programmes adjusted** according to emerging contexts



IPC food insecurity Jan – Mar 2023 projection



# EVOLUTION OF THE RESILIENCE PARTNERSHIP



# SOMALIA JOINT RESILIENCE ACTION



**FAO/WFP:** Asset creation; local purchase; fodder production; safety nets and savings groups



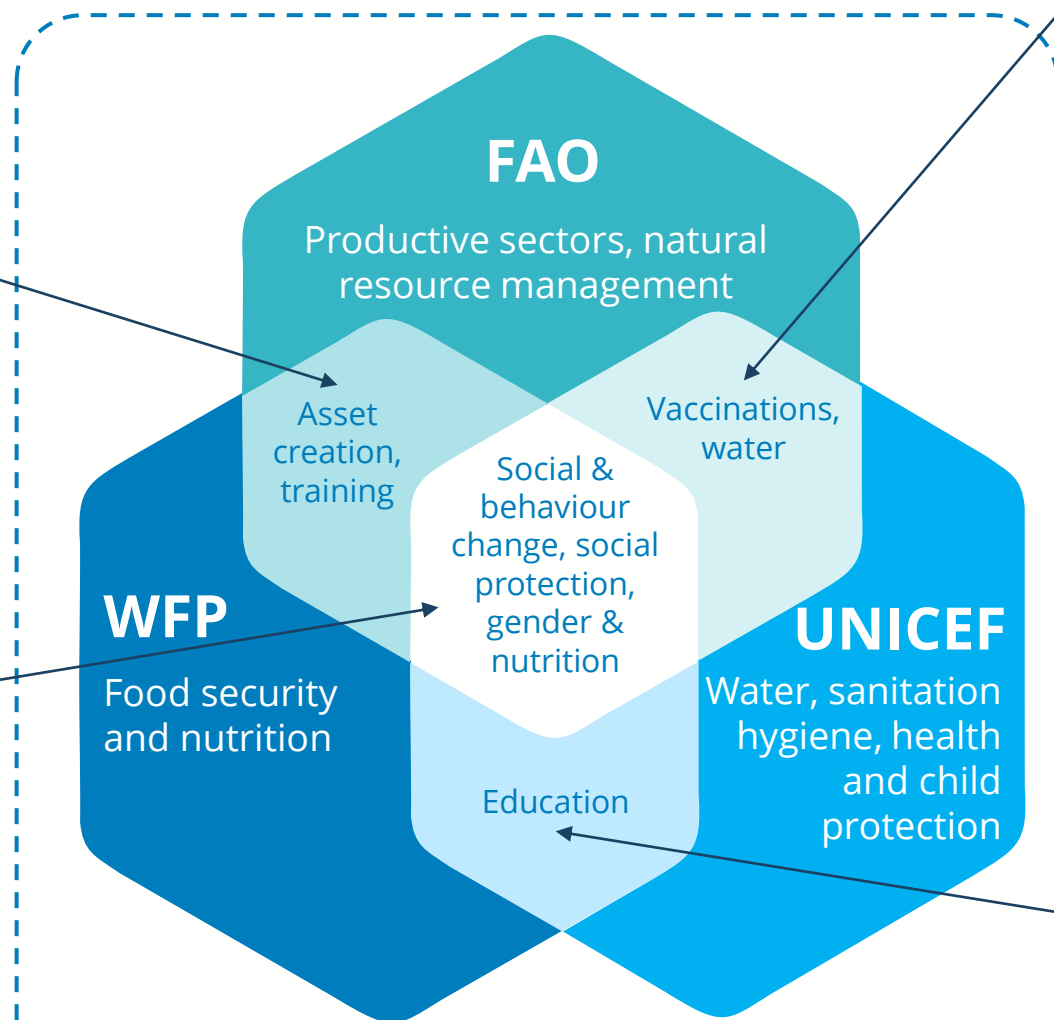
**INTEGRATED NUTRITION SERVICES:** Integrated social and behaviour change and community health workers



**FAO/UNICEF:** Water; social and behaviour change and vaccination campaigns



**WFP/UNICEF:** Target the same schools to provide children with water, education, nutritious meals and health services



**Government of Somalia Key Line Ministries:**  
Agriculture and Irrigation, Education; Health; Energy and Water Resources; Planning, Investment and Economic Development

# BENEFITS OF THE PARTNERSHIP



## Improved nutrition

- Acute malnutrition rate in a targeted region **dropped from 13.1%** in 2018/2019 to **9.7%** in 2022



## Malnutrition prevention

- **100** treatment centers operating
- **307,000** children and **160,000** breastfeeding mothers treated



## Higher levels of acceptable food consumption

- **Restored agricultural potential:** 20% increase in maize and sorghum production



## Reduction in school closures, increased retention rates

- Supported schools **remained open** during drought, **retaining 95% of** children enrolled



# THE WAY FORWARD

---



Launch an integrated drought recovery programme



Scale up and expand partnerships and resilience programmes



Extend investments to enable durable solutions for IDPs



Invest in and align with Government's priorities and development plans





**Thank you**  
for your attention

