



World Food Programme

# WFP BURUNDI CO

## ICSP 2022–2024 INFORMAL CONSULTATION

10 December 2021

# THE ICSP FORMULATION PROCESS

Broad consultation, robust evidence, strong alignment :

- UN operates under the **UNDAF 2019 - 2023** (steps towards a CCA & CF underway).
- **Consultative approach:** Feedback received from the Govt, donors, IFIs, UN Agencies, NGOs, cooperating partners, and private sector, beneficiaries through CFM mechanism.
- **Guidance and internal discussion** with the Regional Bureau Nairobi, and with HQ.
- **Aligned with Government's priorities** and National Development Plan (2018 – 2027).
- Informed by **previous ICSP** (2018 – 2020) lessons learned, evaluations.



NGO



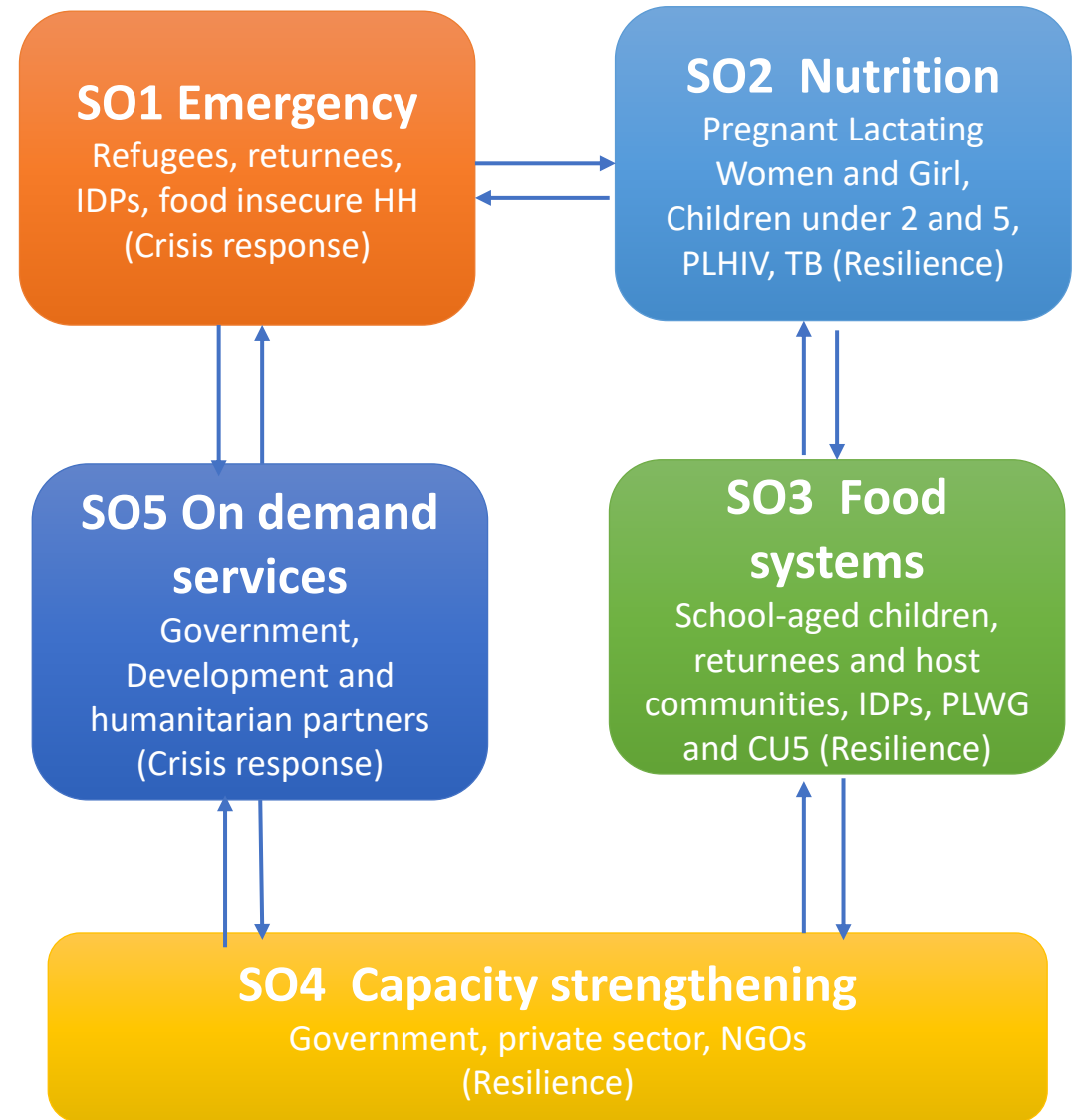
# BURUNDI ICSP 2022–2024

## Snapshot

- 5 Strategic Outcomes
- 12 Outputs
- 8 Integrated Activities
- 2,291,750 Direct Beneficiaries
- USD 253 million required over three years

## What's new?

- Integration of activities (crisis response – resilience – nutrition)
- Focus on food systems
- Nutrition sensitive mainstreamed
- Focus on climate change
- Gender equality and transformative approach
- Positions WFP as technical partner rather of implementing partner
- Shift of modality toward more CBT
- Safety net mainstreamed through SOs



# PARTNERSHIPS

We work together with national and local governments, United Nations agencies, private sector and with the communities that we serve – which are critical to build sustainability and stability.



Government and line ministries are our key partners



Joint programmes with UN agencies and IFI to identify synergies and enable impactful delivery of ICSP



Private sector linkages and a network of cooperating partners and retailers



New PAP: international development partners and donors for alignment and impactful programmes



Innovative solutions for improved value chains and strengthened food systems



Consultations with beneficiaries and serving communities and empowering vulnerable groups



**Murakoze  
Cane!**