



World Food Programme

SAVING
LIVES
CHANGING
LIVES



Introduction to Cash-Based Transfers

2020 October

What is a cash-based transfer?

A cash-based transfer is money given to vulnerable people who can use it **to buy what they most need in their local markets.**

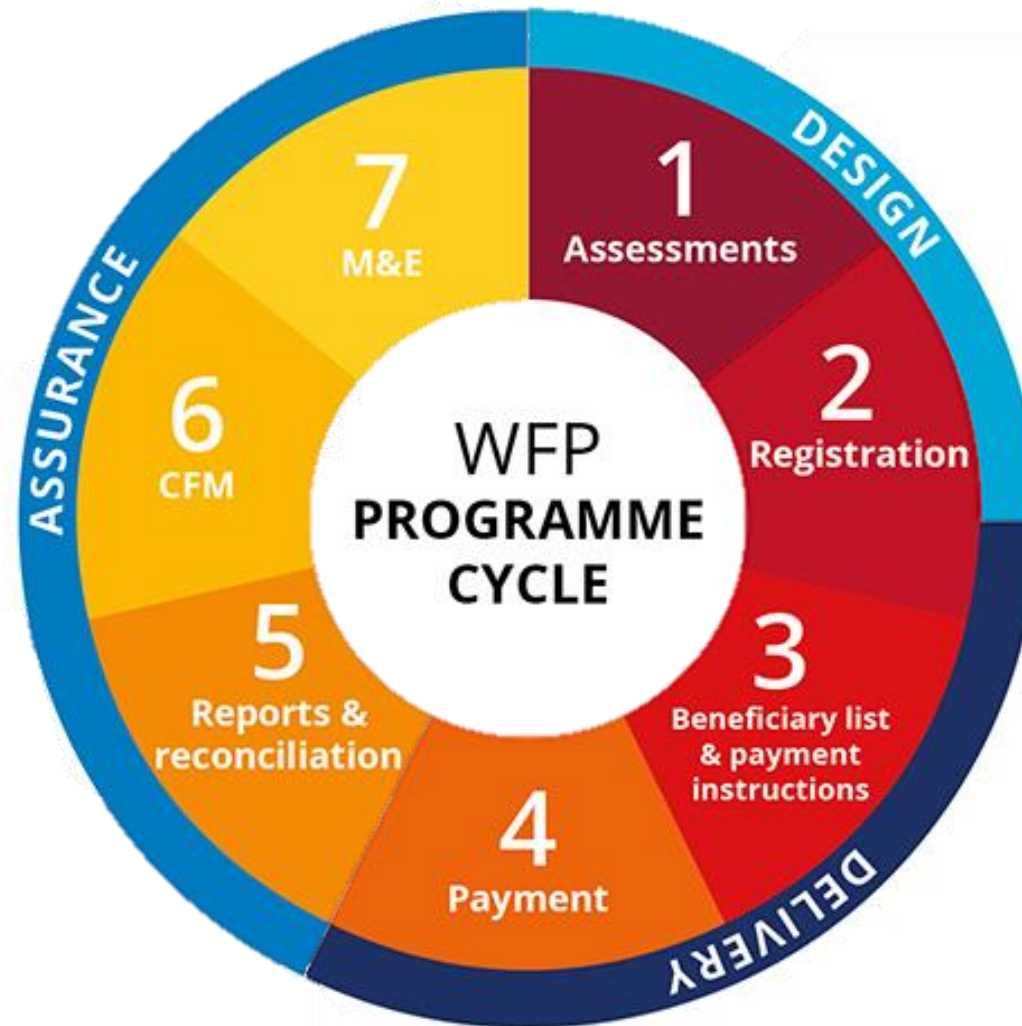
Why does WFP use cash-based transfers?

EMPOWER PEOPLE

BOOST MARKETS

SUPPORT GOVERNMENTS

How a cash programme works



WFP's Assurance Framework for Cash



 RELIABLE IDENTITIES

 UNIQUE IDENTITIES

 PERIODIC VERIFICATION

 BENEFICIARY SELECTION

 PAYMENT INSTRUMENTS

 FSP/CP/RETAILER SELECTION & PERFORMANCE

 PAYMENT INSTRUCTIONS

 RECONCILIATION

OVERARCHING CONTROLS

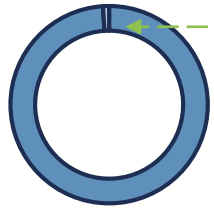
DATA ANALYTICS

BENEFICIARY FEEDBACK

SEGREGATION OF DUTIES

A decade of cash

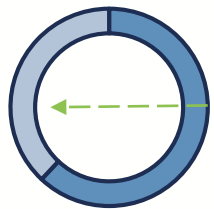
2009



1%

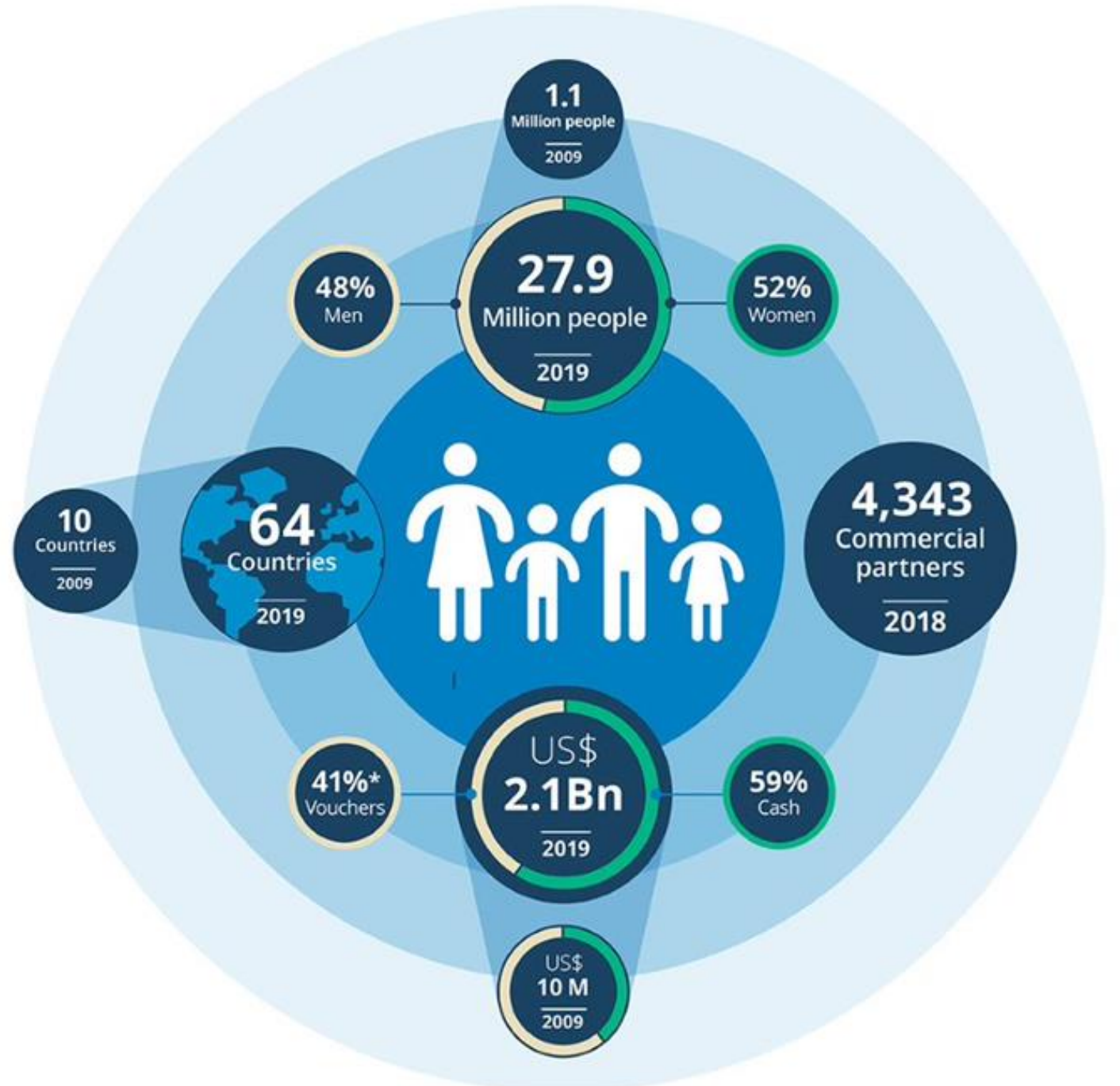
Of WFP total assistance

2019



38%

Of WFP total assistance



World Food Programme

CBT priorities for 2021



ESSENTIAL NEEDS



DATA ASSURANCE



SIMPLIFICATION OF PROCESSES



DIGITAL FINANCIAL INCLUSION



SUPPORTING GOVERNMENTS



COMMON CASH STATEMENT

A woman wearing a white hijab and a denim vest over a patterned top is looking at a bag of food on a grocery store shelf. The background is filled with various food items on shelves.

Thank you for your attention
<https://www.wfp.org/cash-transfers>



World Food Programme