

Protection from Sexual Exploitation and Abuse

EXECUTIVE BOARD INDUCTION

OCTOBER 2020

Bonnie E. Green

Director and Chief Ethics Officer

Ethics Office



World Food Programme



Protection from Sexual Exploitation and Abuse (PSEA)

What is Sexual Exploitation?

The actual or attempted abuse of a position of vulnerability, differential power, or trust, for sexual purposes, including for financial gain, personal gratification, or social benefit.



Photo: WFP/Saikat Mojumder

What is Sexual Abuse?

! SEA means acts against the people we serve



Photo: WFP/Gabriela Vivacqua

The actual or threatened physical intrusion of a sexual nature, whether by force or under unequal or coercive

Sexual harassment or abuse?

Sexual Exploitation and Abuse (SEA) is **NOT about sexual harassment.**

In the United Nations and WFP, SEA means acts against those we serve.

Sexual Harassment, means acts committed against WFP employees.



Harassment

any improper or unwelcome conduct that might reasonably be expected or be perceived to cause offence or humiliation to another person.

Sexual harassment

any unwelcome sexual advance, verbal or physical conduct of a sexual nature, be it an act of sexual violence or any other behaviour of a sexual nature, that might reasonably cause offense or humiliation to another person.

What is the WFP policy on SEA?

WFP has a **zero tolerance** policy for sexual exploitation and abuse, committed both **at** and **away** from the **workplace**, and **during** or **outside working hours**



**WFP HAS
ZERO TOLERANCE
FOR SEXUAL EXPLOITATION
AND SEXUAL ABUSE (SEA)**

APPLIES TO

All WFP employees, regardless of contract type and duration

All WFP partners, suppliers, contract workers and external service providers

Six Core Principles relating to Sexual Exploitation and Abuse (SEA)

1

SEA constitutes acts of gross misconduct and is grounds for termination of employment.

NO SECOND CHANCES

2

Sexual activity with children (<18 year of age) is prohibited.

NO SEX WITH CHILDREN

3

Exchange of money, employment, goods for services for sex is prohibited, including hiring prostitutes.

DON'T HIRE/BRIBE ANYONE FOR SEX

4

Any sexual relationship with beneficiaries that involves improper use of position is prohibited.

NO SEX WITH BENEFICIARIES

5

Humanitarian workers are obligated to report any concerns regarding SEA by fellow workers.

ALWAYS REPORT SEA

6

Humanitarian workers are obligated to create and maintain an environment which prevents SEA.

DISCOURAGE SEA AROUND YOU

Reporting Sexual Exploitation and Abuse

If you observe or suspect SEA is committed by a WFP employee or those associated with the work of WFP, **you are obligated to report it.**

Reports should be made to:

- * **The designated PSEA Focal Point**

at the country or field office levels, or his/her alternate. They will refer the matter to the Office of Inspections and Investigations (OIGI).

- * **The Office of Inspections and Investigations**

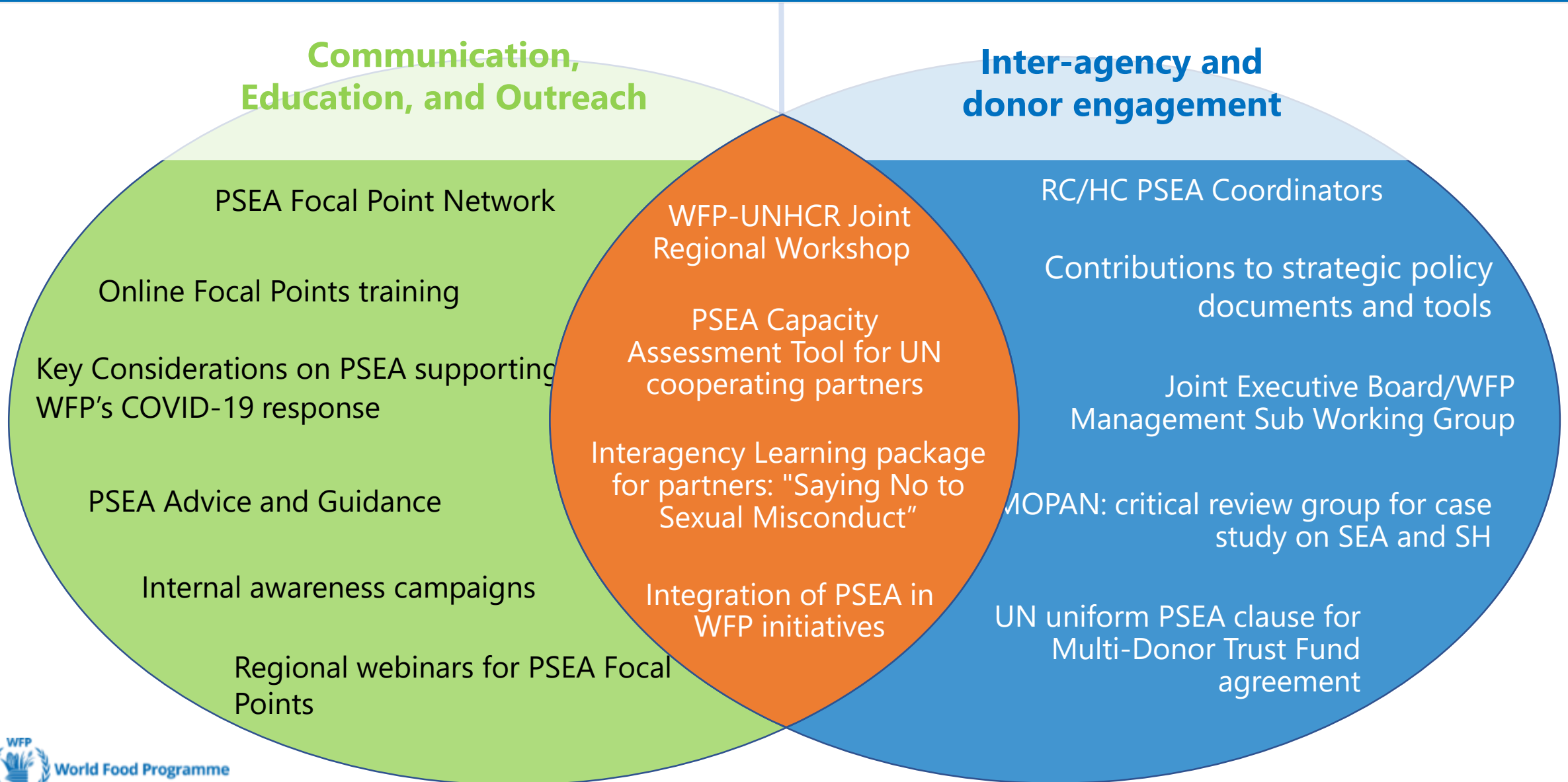
Direct: +39 06 6513 3663

FoodSat: 1301 3663

Hotline@wfp.org



PSEA workstreams





THANK YOU



WFP

World Food Programme