



World Food Programme

SAVING  
LIVES  
CHANGING  
LIVES



## Regional Bureau for West Africa – An overview

June 2020





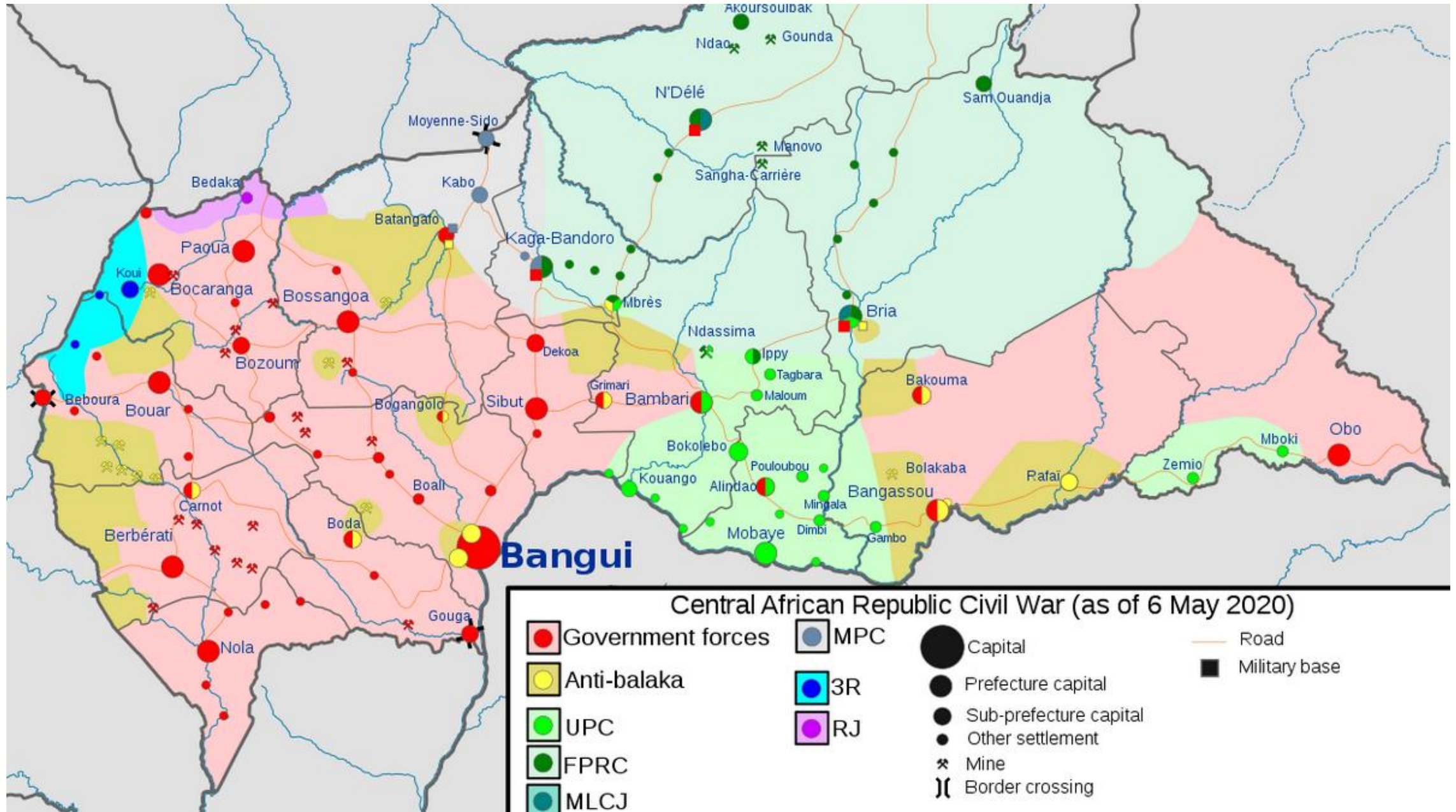
**Planting the seeds of opportunity in crisis**



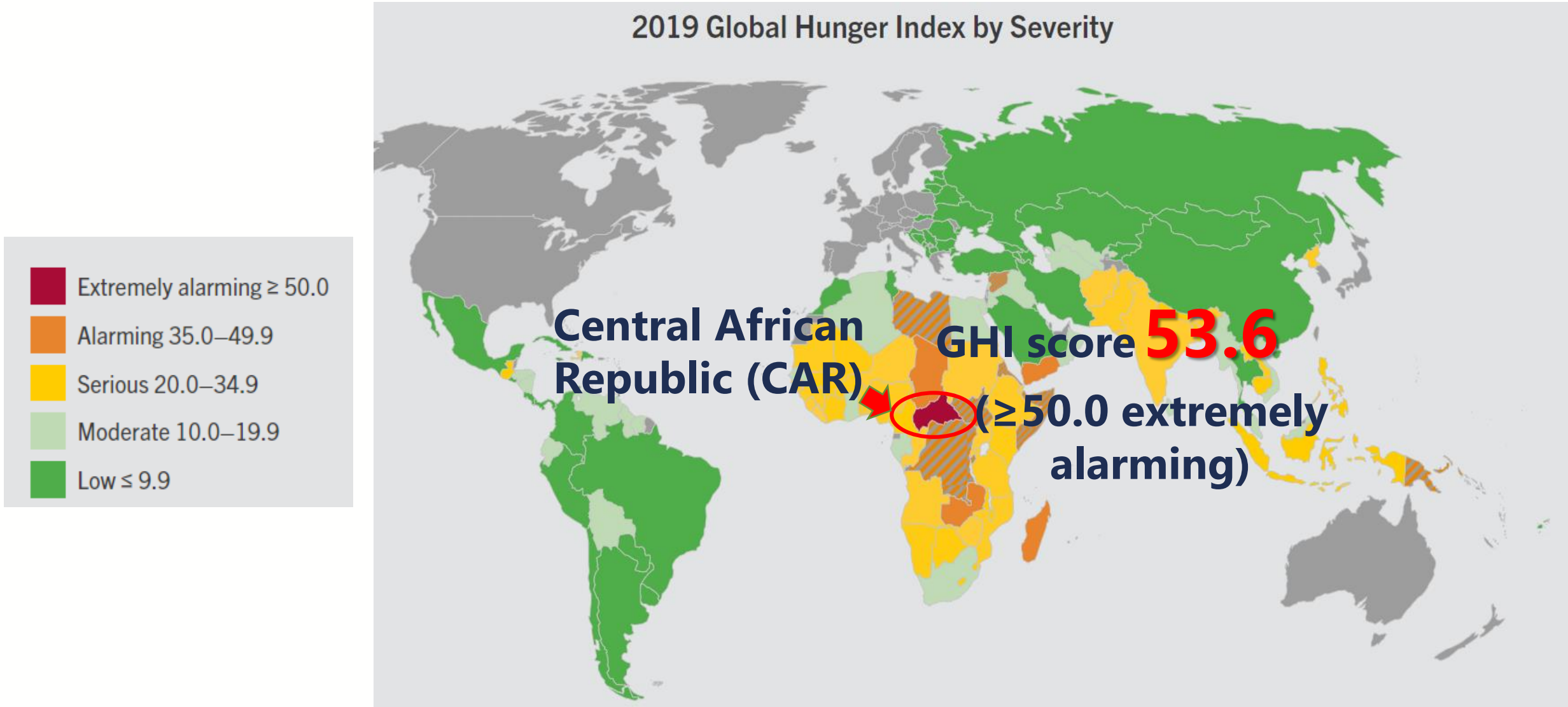




# Central African Republic – armed groups and mineral resources



# CAR ranks 117th of 117 qualifying countries in the Global Hunger Index 2019, the only country with an “extremely alarming” score



Source: Global Hunger Index 2019

Disclaimer: The boundaries and names shown and the designations used on these maps do not imply official endorsement or acceptance by the United Nations



# Deteriorating security in the Lake Chad Basin



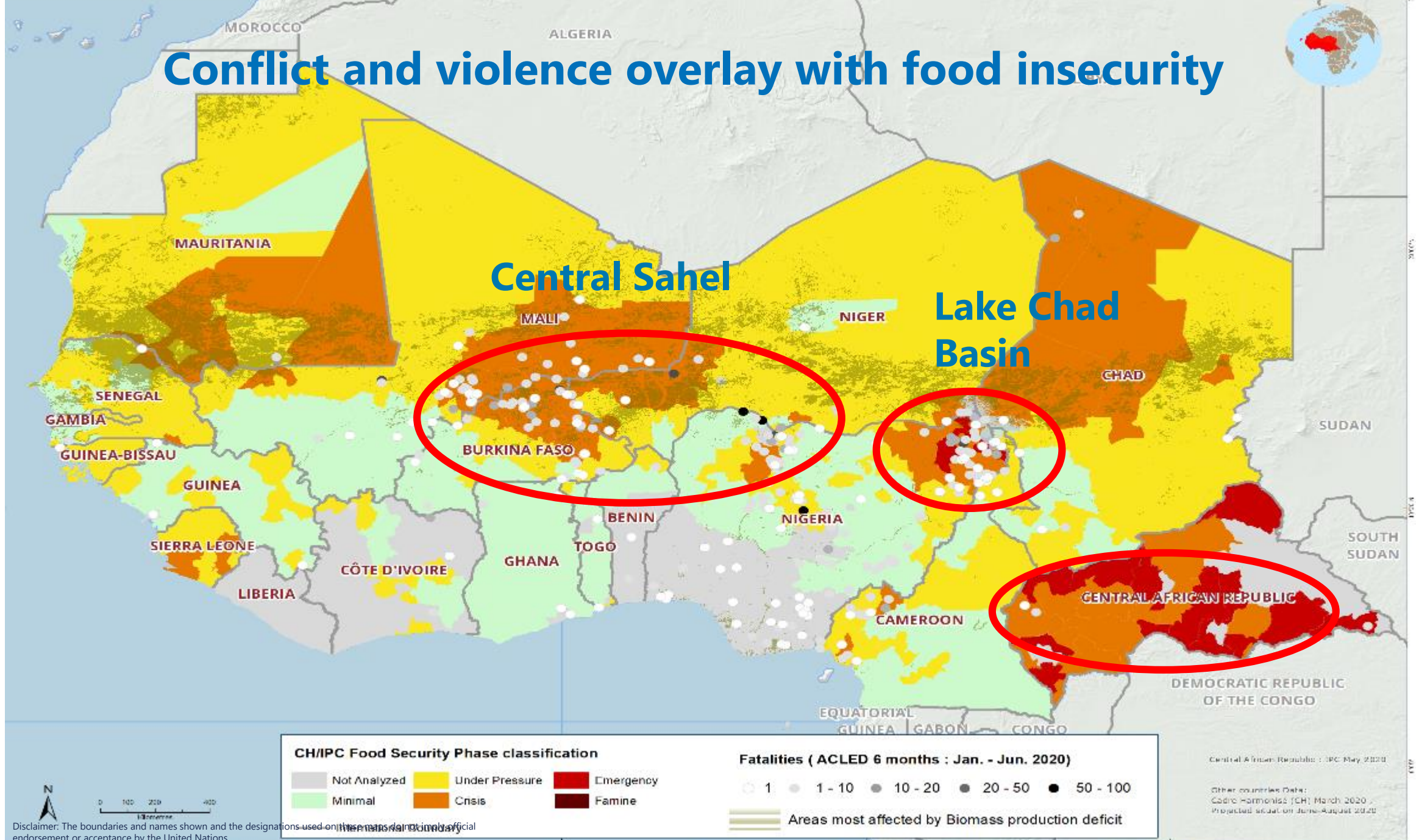
**Ngala, northeast Nigeria,  
January 2020**



**Monguno, northeast Nigeria,  
June 2020**



# Conflict and violence overlay with food insecurity



Disclaimer: The boundaries and names shown and the designations used on this map do not imply official endorsement or acceptance by the United Nations

Date created: 24 Jun 2020. Contact: [ahdoul@wfp.org](mailto:ahdoul@wfp.org). Website: [www.wfp.org](http://www.wfp.org). Prepared by: WAM, RRD  
Map Reference: [ahd\\_regionalMap\\_food\\_security\\_projected\\_situation\\_june-august\\_2020](#) and [conflict\\_fatalities\\_6months\\_20200223](#)

Data sources: WFP offices, WFP Headquarters, CDD - 04 March 2020, ACLED

The designations employed and the presentation of material in this map do not imply the cooperation or any opinion on the part of WFP concerning the legal or constitutional status of any country, territory, city or area, or concerning the delimitation of its frontiers or boundaries.

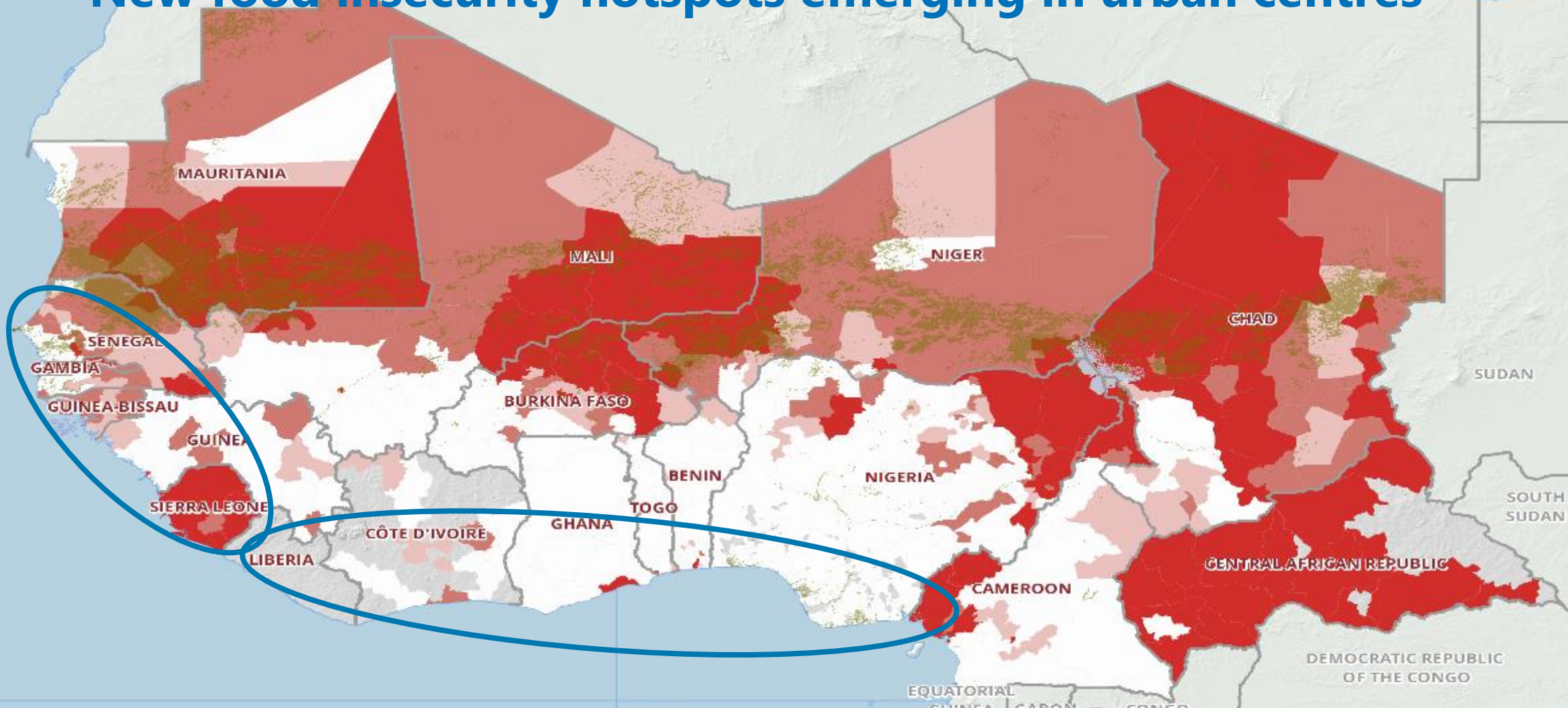
© World Food Programme 2020







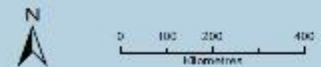
# New food insecurity hotspots emerging in urban centres



**FS Hotspot Areas**

Priority4	Priority2	Areas most affected by Biomass production deficit
Priority3	Priority1	
Not analyzed		
International Boundary		

Central African Republic: IPC May 2020  
 Other countries Data: Cadre Harmonisé (CH) March 2020  
 Projected situation: June-August 2020



Disclaimer: The boundaries and names shown and the designations used on these maps do not imply official endorsement or acceptance by the United Nations

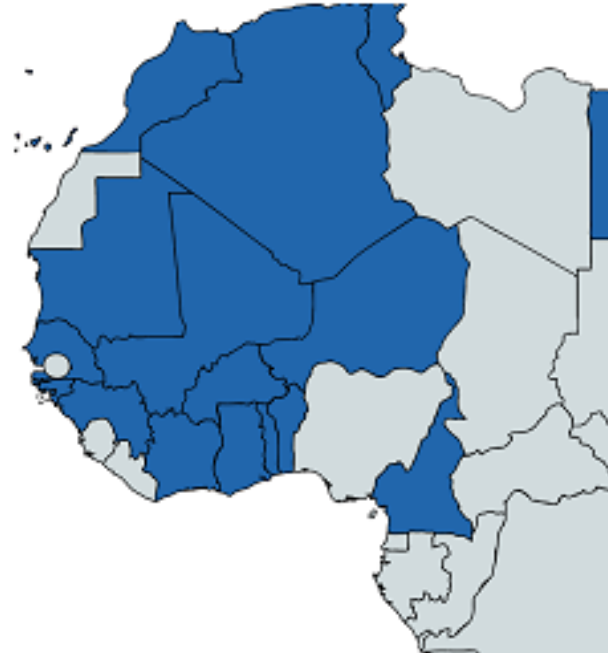


# Countries with planned or active social protection measures in response to Covid-19 in West Africa

March 20



April 10



June 12







Building on the opportunities of the crisis





World Food Programme

# Thank you!



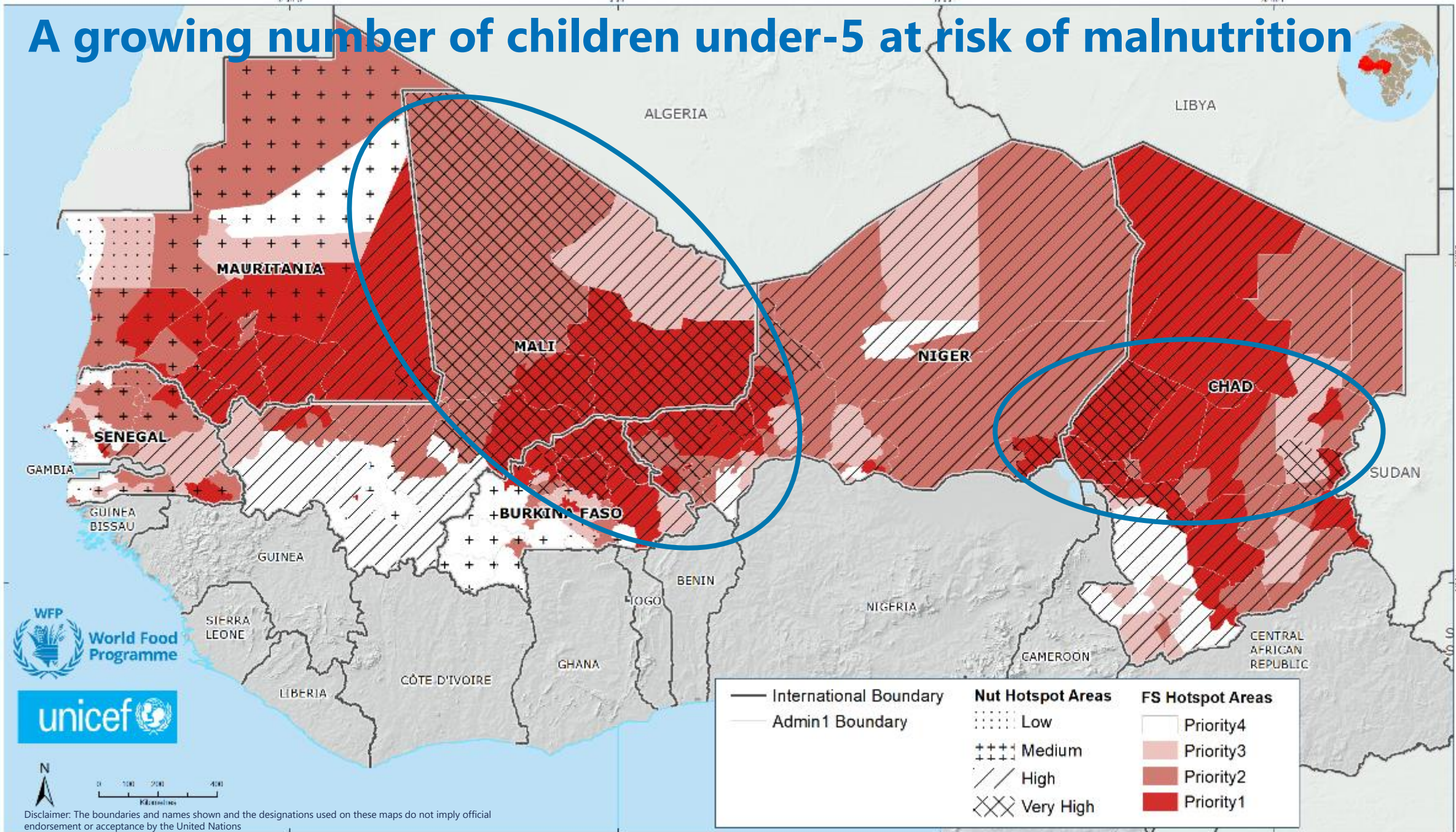
World Food Programme



SAVING  
LIVES  
CHANGING  
LIVES



# A growing number of children under-5 at risk of malnutrition



Disclaimer: The boundaries and names shown and the designations used on these maps do not imply official endorsement or acceptance by the United Nations

Data Date: 31 May 2020 | Contact: [abdoulaye.ndiaye@wfp.org](mailto:abdoulaye.ndiaye@wfp.org)  
 Website: [www.wfp.org](http://www.wfp.org) | Prepared by: WAM, RBD

Data sources: WFP offices, WFP - Boundaries: OCHA - Roads, ©OpenStreetMap Contributors - Populated places: GeoNames

The designations employed and the presentation of material in this map do not imply the expression of any opinion on the part of WFP concerning the legal or constitutional status of any country, territory, city or sea, or concerning the delimitation of its frontiers or boundaries.