



World Food Programme



# Executive Board

Regional Bureau Southern Africa

21 November 2019

SAVING  
LIVES  
CHANGING  
LIVES



## Regional Overview

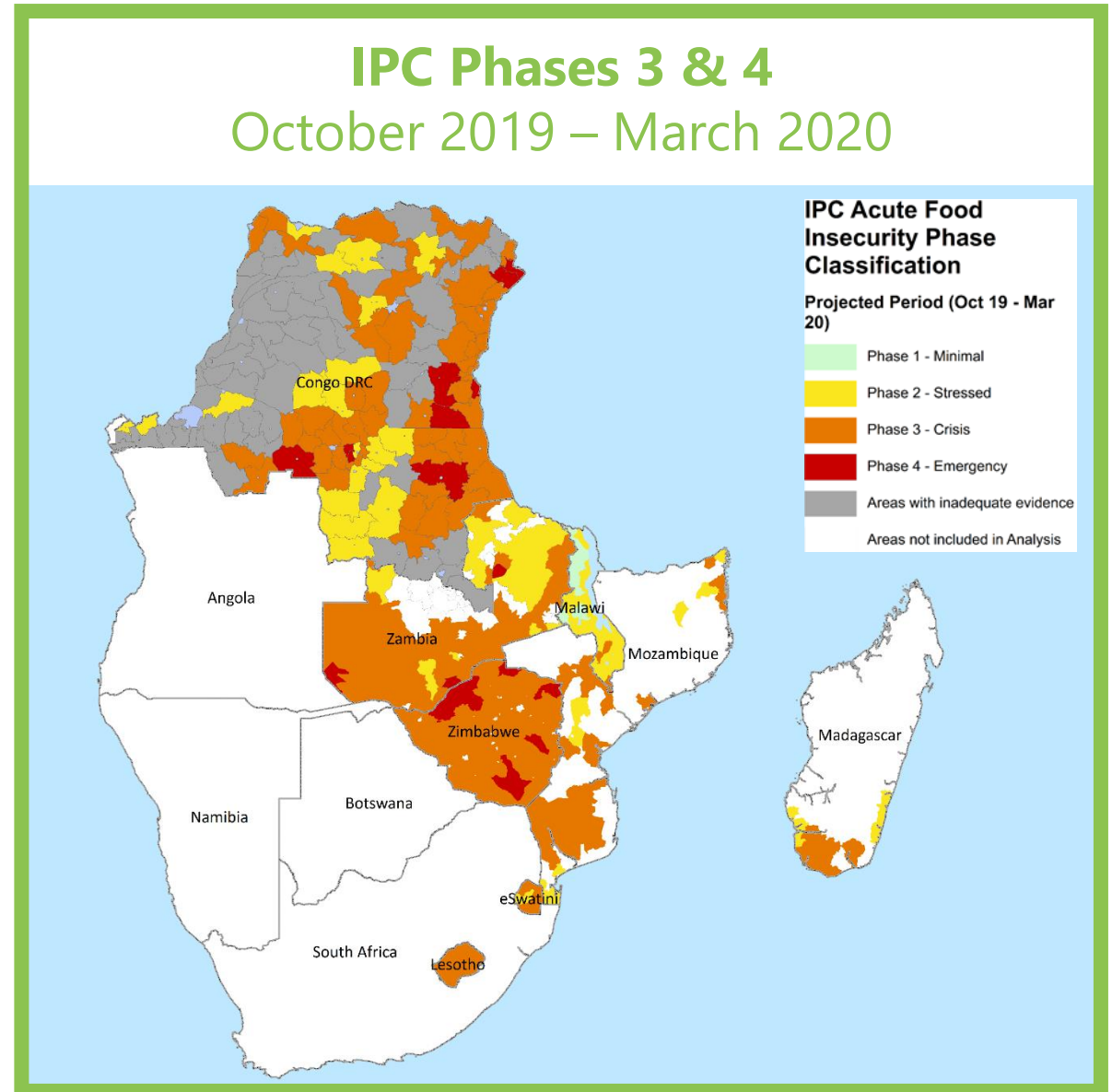
# LEAN SEASON RESPONSE

2019/20

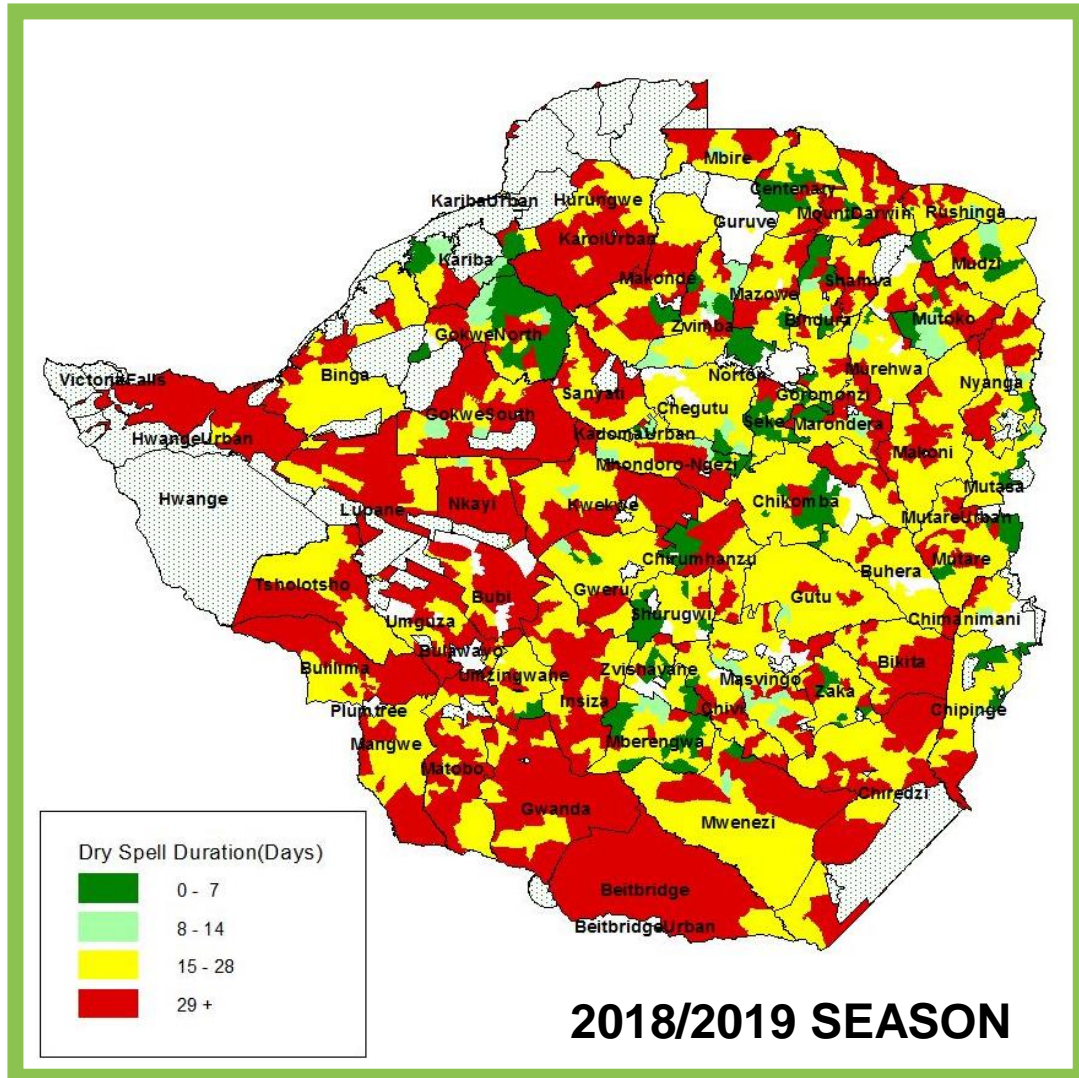


# Regional Overview

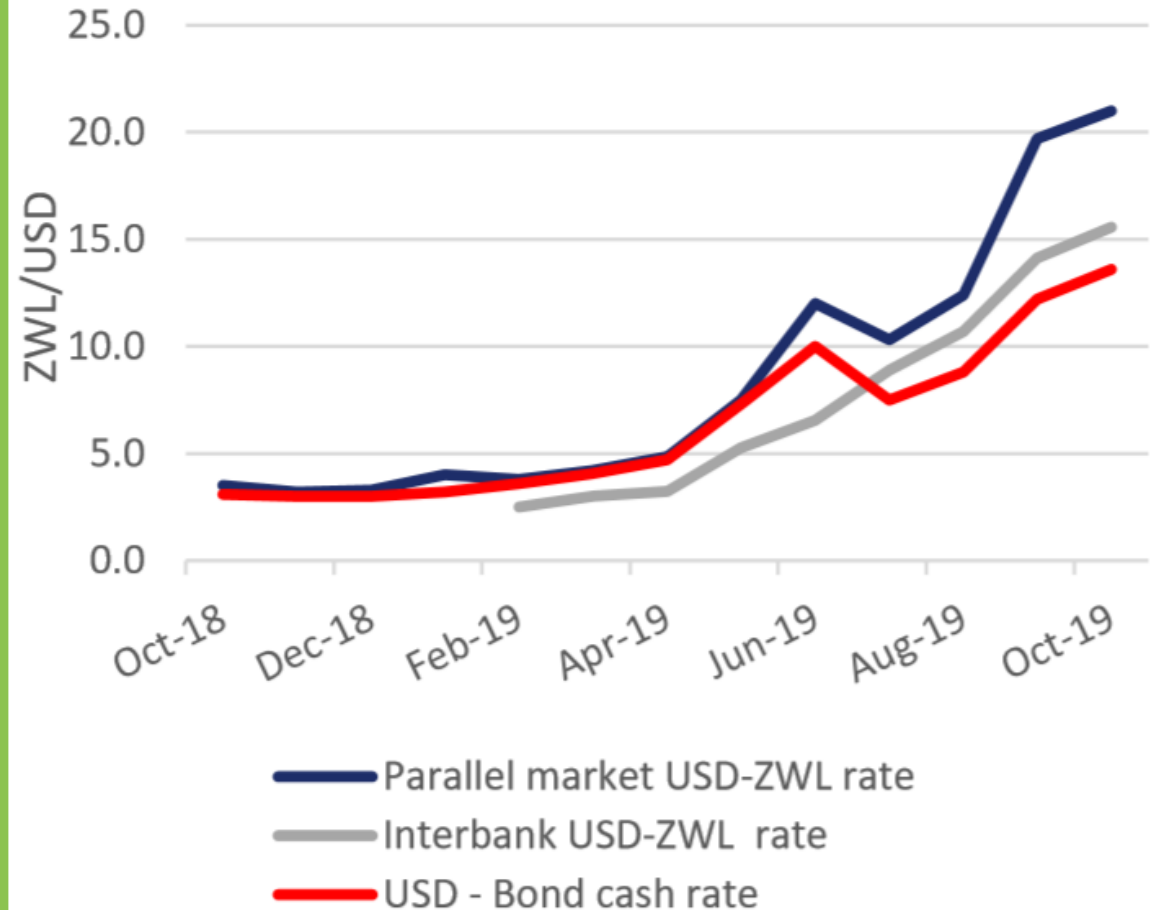
- **45 M** food insecure in SADC region
- Temperatures rising at **twice** the global average
- **2 unprecedented** cyclones in 6 weeks
- **Driest** growing season in a generation
- Large-scale **livestock losses**



# Zimbabwe

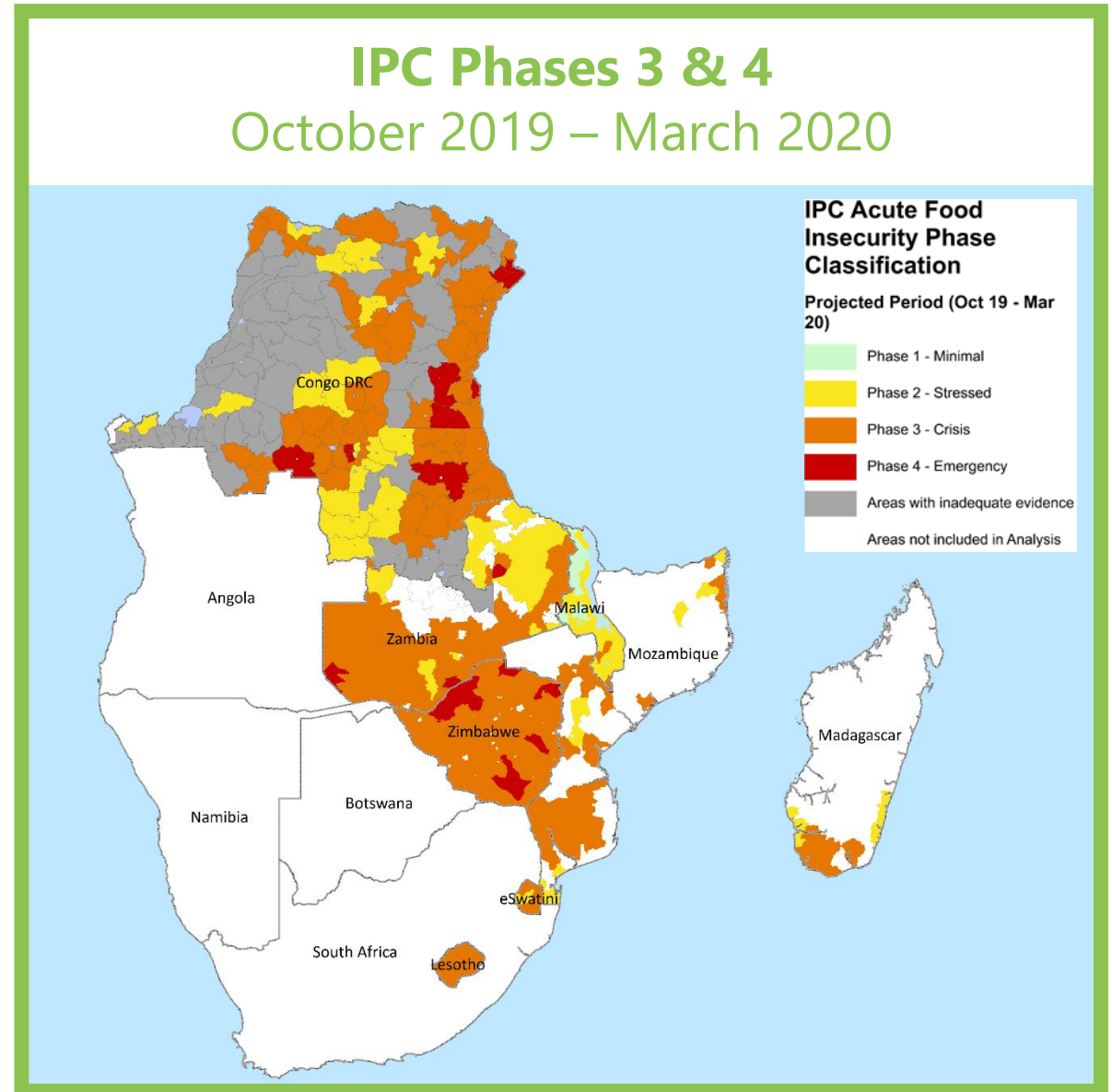


## Weekly Exchange Rates of USD to ZWL and Bond Notes from October 2018 to October 2019



# Regional Overview

- **45 M** food insecure in SADC region
- Temperatures rising at **twice** the global average
- **2 unprecedented** cyclones in 6 weeks
- **Driest** growing season in a generation
- Large-scale **livestock losses**



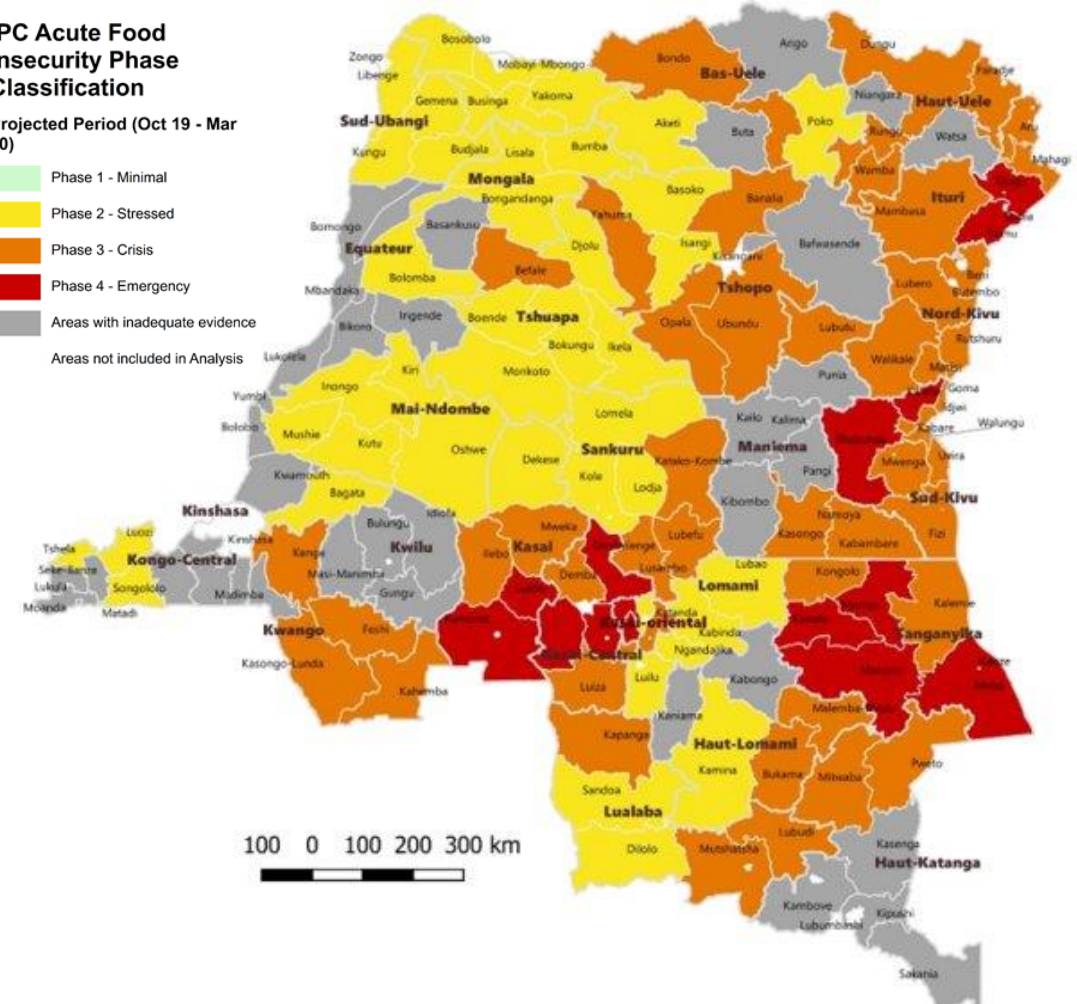
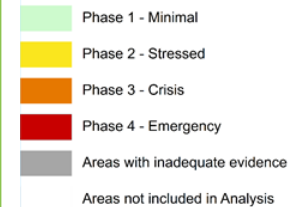
# DRC Food & Nutrition Security

- **16 million** food insecure people
- **5 million** children suffering from acute malnutrition
- **608,000** assisted from Jan-Jul 2019 with nutrition programmes
- In Tanganyika, **94%** cannot afford a nutritious diet

## DRC: Current IPC Classification July – December 2019

### IPC Acute Food Insecurity Phase Classification

Projected Period (Oct 19 - Mar 20)





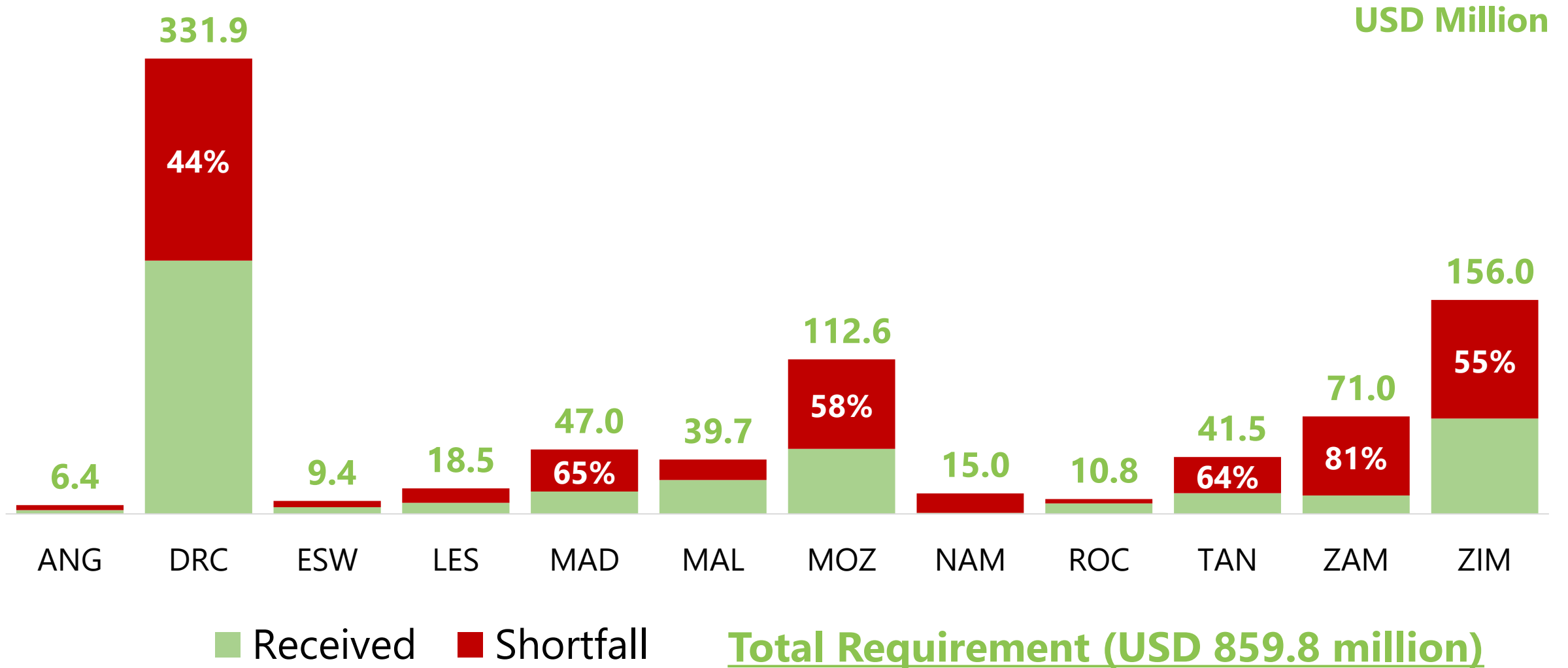
**Private  
Sector**

# **CASSAVA PROJECT**

Republic of Congo



# RBJ Net Funding Needs (Nov 2019 – Apr 2020)





**ASANTE**

**KEA LEBOHA**

**MERCI**

**NGIYABONGA**

**OBRIGADO**

**THANK YOU**

**ZIKOMO**

