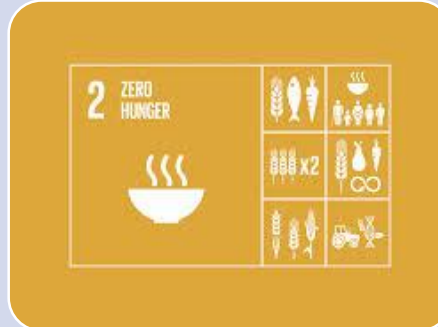


# BENIN COUNTRY STRATEGIC PLAN (2019-2023)



# BENIN 2019-23 : focus on National School Feeding Programme



impacts

root causes of

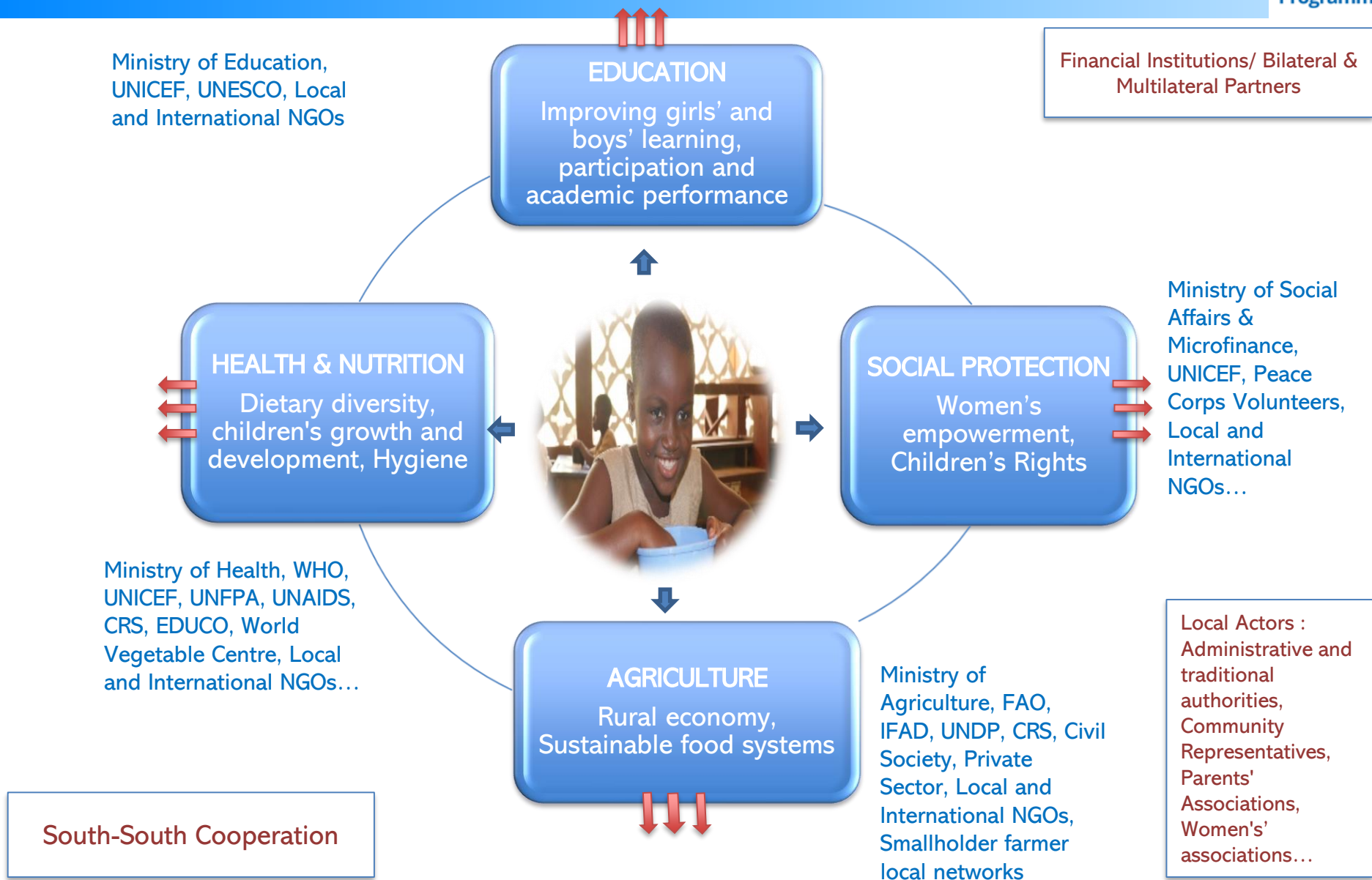
- school dropout
- malnutrition
- hunger

ensures sustainability  
of food security &  
nutrition  
interventions

provides platform  
for inclusive  
development of  
human capital

induces social  
progress

# INTEGRATED APPROACH – COMPLEMENTARITIES AND SYNERGIES



# BENEFICIARIES



**966 500**

girls and boys  
(students)

**School Meals**



**11 550**

women/men/girls/  
boys

**Nutrition**



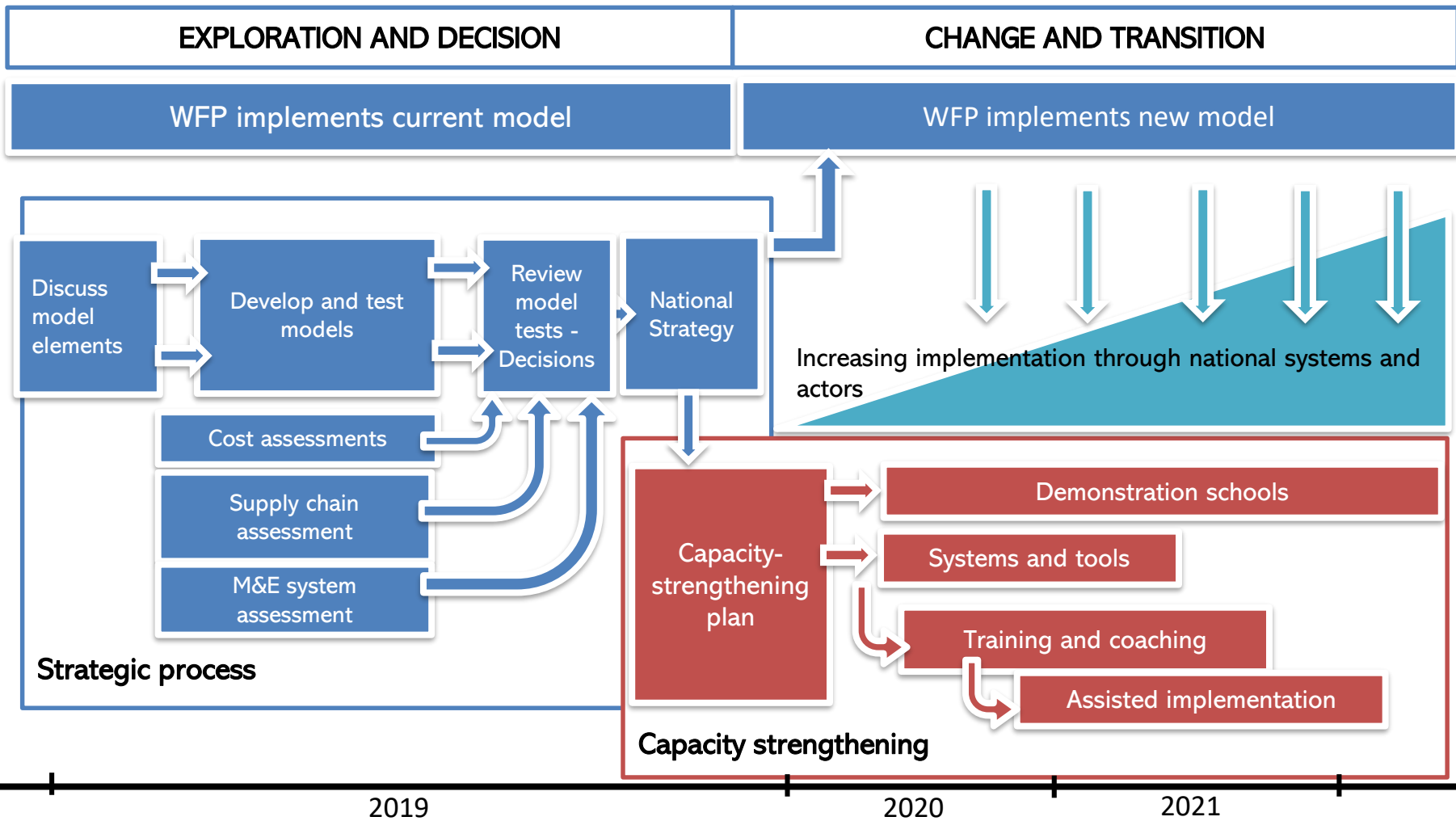
**815**

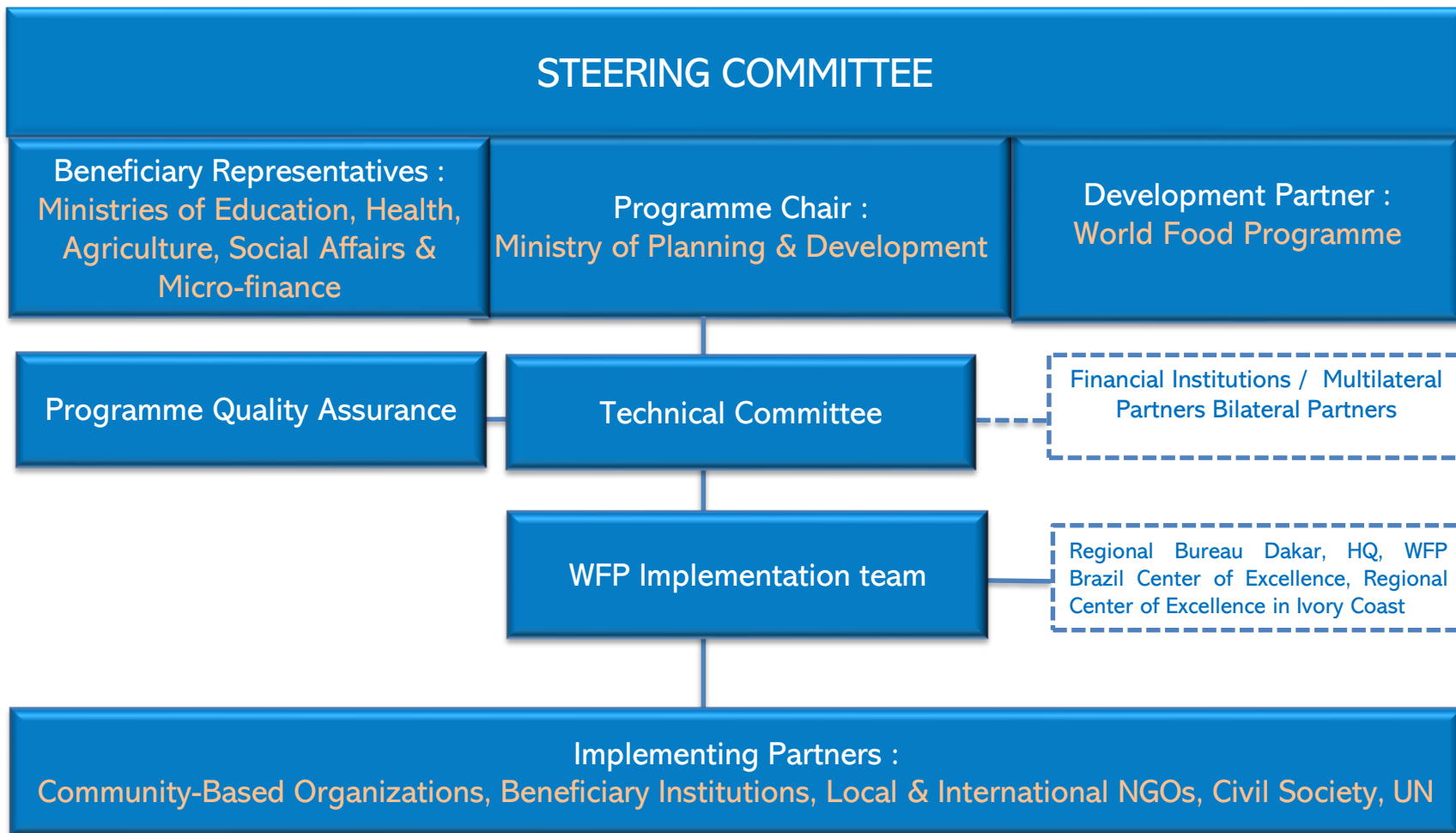
women/men/girls/  
boys

**Capacity  
Strengthening**

The CSP will create between 4500 – 7000 jobs (smallholder farmers and community-based workers/animators in schools)

# ROAD MAP





# CONCLUSION : BUILDING LONG TERM....

- Move from school feeding response focus to resilience building and long-term development;
- stronger partnership and sustained impact through immediate future and long-term investment;
- The enactment of a law on the school feeding programme would ensure that the achievements of the programme are preserved and sustained in the long term.



World Food Programme



THANK YOU FOR YOUR SUPPORT