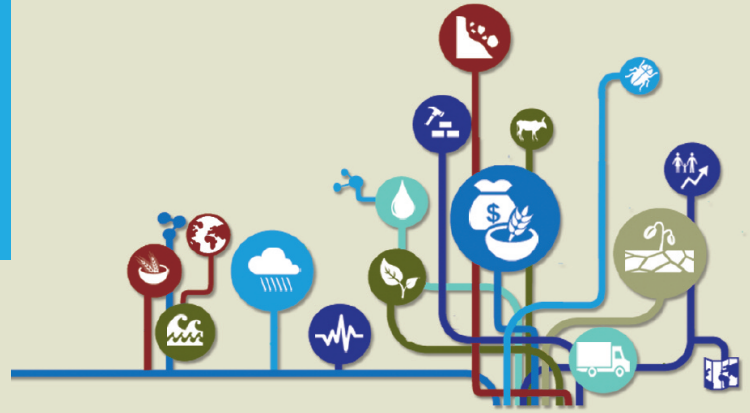


What is SISMod?

Shock Impact Simulation Model (SISMod)

A tool to measure the impact of shocks on food security in vulnerable countries



What is SISMod?

SISMod is an economic modelling system that serves as food security analysis tool. It allows timely quantitative assessments of the impacts of various types of shocks on households' incomes and food security in low-income food-deficit countries.

SISMod provides early estimates of the impact of shocks to inform the initial development of response scenarios.

What is SISMod used for?

How does SISMod work?

SISMod is based on the Agricultural Household Model (Singh, 1986) and extended by a two-stage-demand system, adding demand elasticities from the Linear Almost Ideal Demand System (Deaton, 1986).

- SISMod** measures the:
- i) Proportion of food-energy deficient population,
 - ii) Depth of hunger,
 - iii) Food gap, and
 - iv) Total food assistance required to meet the needs.

What does SISMod measure?

For more information please visit: <http://faowfpmode1.wixsite.com/sismod> or contact:

Arif Husain
Chief Economist and Deputy Director
Policy and Programme Division
World Food Programme
arif.husain@wfp.org

Tobias Flämig
Head, Economic and Market Analysis Unit
Policy and Programme Division
World Food Programme
tobias.flaemig@wfp.org

