



World Food Programme

# Breaking the Cycle of Hunger: Building Resilience

## Malawi Country Strategic Plan 2019-23

SAVING  
LIVES  
CHANGING  
LIVES

July 2018



# Malawi food security context

Malawi is **shock-prone** to recurrent droughts and floods

Exposure to shocks is aggravated by **high vulnerabilities**

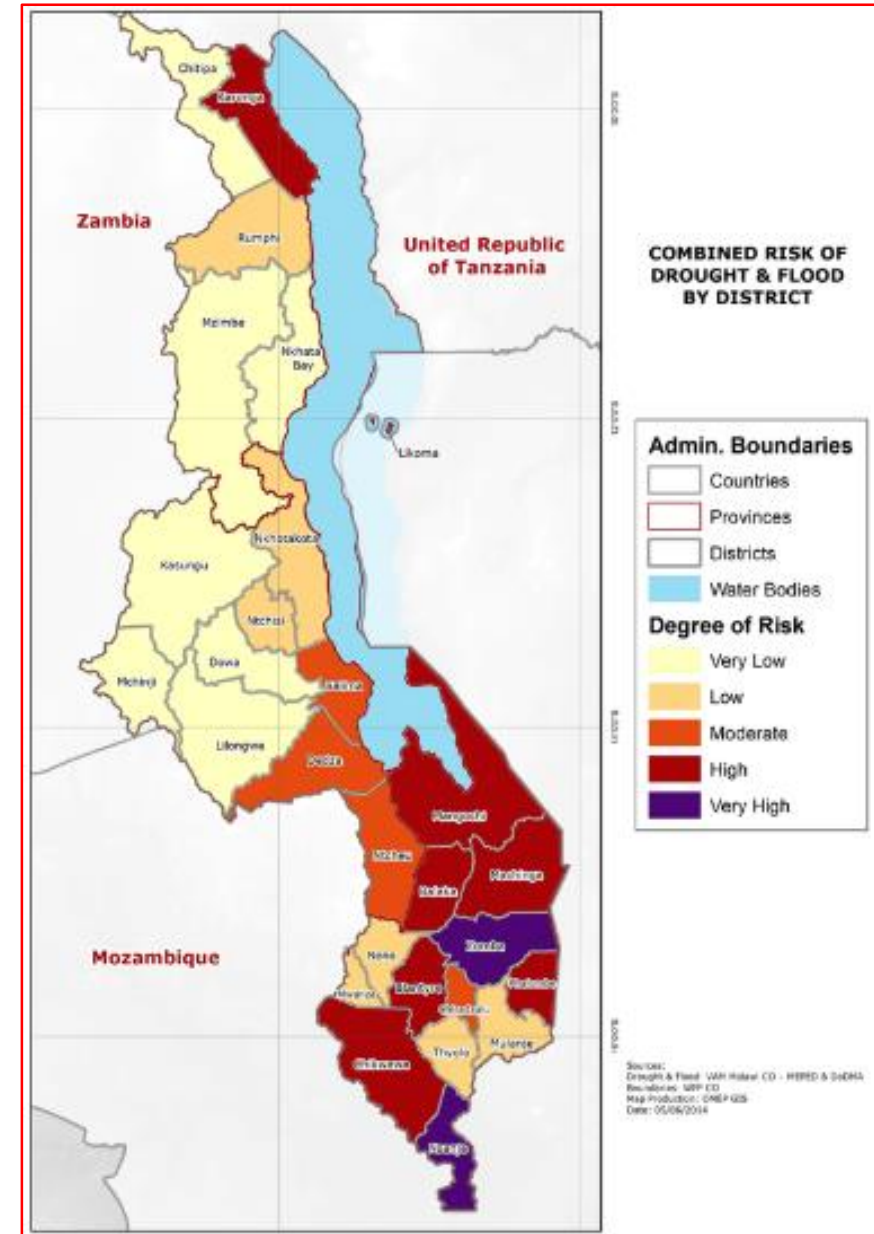
- Poverty
- Food insecurity
- Malnutrition/Undernutrition
- Subsistence rain-fed smallholder farming
- Land degradation/resource depletion
- Fragmented food system

There is **limited capacity & resources** to withstand shocks

- Malawi has registered recurrent humanitarian food needs in the Lean Season

National consensus and **commitment to resilience**

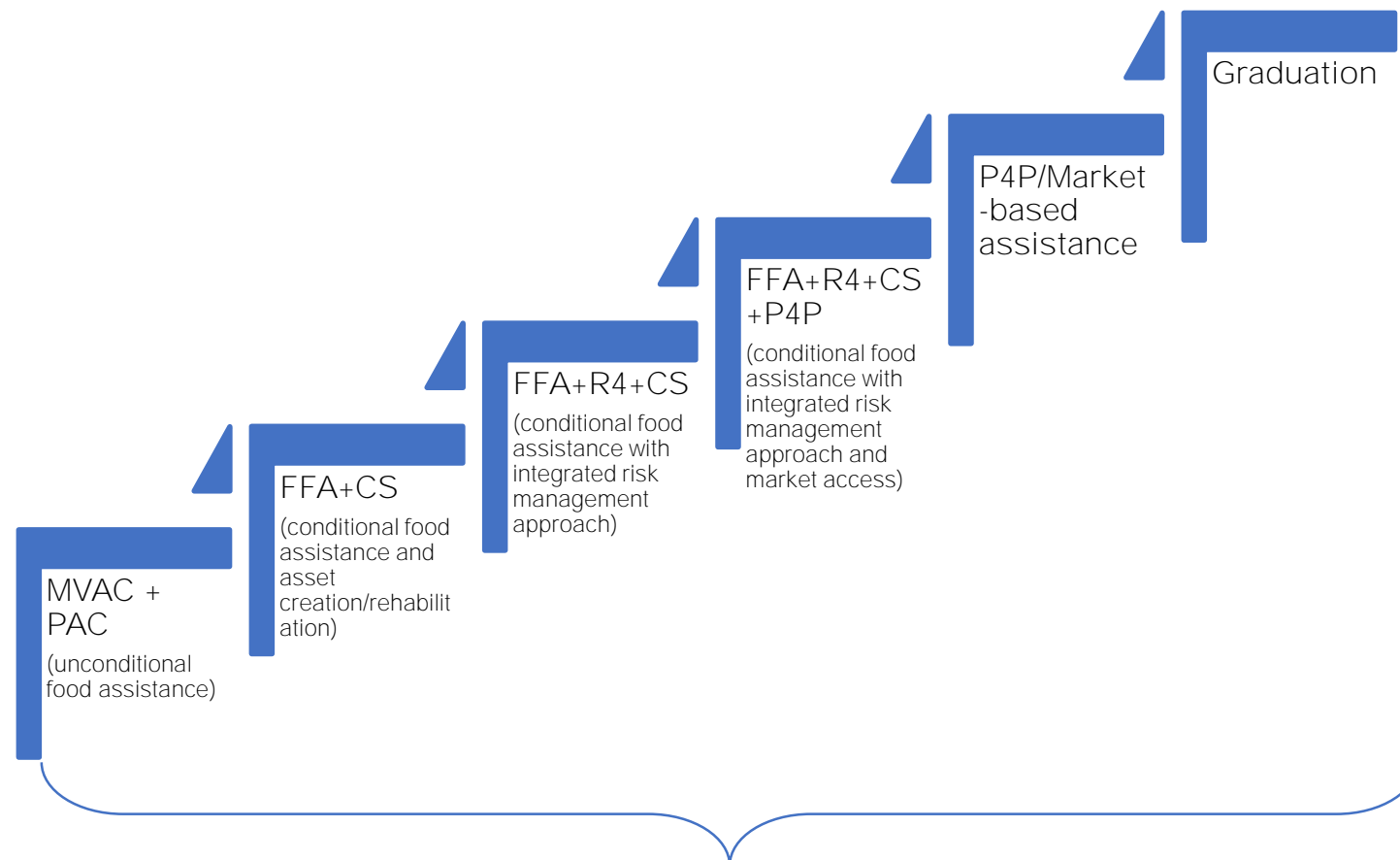
- MGDS III, MNSSP II, NRS, NAIP, Climate Change Policy, NAPA,
- UNDAF, Vision 2020, 2050



# Resilience - Integration for Graduation & Greater Impact (SO4)

## WFP's Role:

- Support to government efforts on coordination and alignment
- Seek common vision & monitoring approaches, supporting learning and advocacy
- Capacity strengthening on Watershed management and integrated resilience building
- Continue to support households with integrated resilience package aimed at graduation
- Link to shock-responsive social protection (SO1/2) and systems strengthening



Forecast Based Finance Scheme

# How will WFP operationalize the CSP to 2023 and beyond?



- **Embrace innovation and integration**, to achieve better coordination, effectiveness and programmatic impact
- **Be a key generator of evidence** and a thought leader in food and nutrition insecurity in Malawi
- **Engage in high-level dialogue and advocacy** with government, and among donor and resource partners, based on evidence
- **Promote and support government and national systems strengthening**, and capacity building across all programming efforts
- **Pursue gender mainstreaming in all activities** and be a champion for gender equality and transformation in Malawi
- **Catalyse links between the public and private sector** to support increased resilience





World Food Programme

Thank you

SAVING  
LIVES  
CHANGING  
LIVES

## Malawi Country Strategic Plan 2019-23

July 2018

# Malawi CSP 2019-23



## **SO1 & SO2** A shock-responsive hunger safety net

building Govt. capacity to respond to acute and structural food needs. Adding productive asset creation as part of the response when appropriate (Ref: SO4).

**SO1** Supporting Refugees, through legal reforms and building a pathway to self-reliance

**SO1. Access during crisis**

**SO2. Access year round**

**SO2** Scaling up School Meals, including with HGSF (SO4), providing nutrition-sensitive SBCC.

### WFP's new thinking

- Evidence
- Systems
- Integration
- Coordination
- National Capacity
- Gender Transformation

**SO3. Ending Malnutrition**

**SO3** Lifecycle approach to nutrition-sensitive programming, and mainstreaming supply chain in the Government

**SO4. Building resilience for Smallholders**

**SO4** Integrated package of resilience building activities with graduation pathways, focusing on geographical areas for impact.

**SO5** Providing Services and catalyzing private-public partnerships to transfer national supply chains to Government

**SO5. Capacity Strengthening**



# Malawi Zero Hunger and Malnutrition Strategic Review



## What is the ZHMSR?

A Government-led, analytical, and consultative initiative to identify recommendations to advance progress towards achieving SDG2: Zero Hunger by 2030

## Who leads the ZHMSR?

Former Vice President Hon. **Justin C. Malewezi**

## Who does the research?

A research team led by IFPRI, comprised of national and international researchers

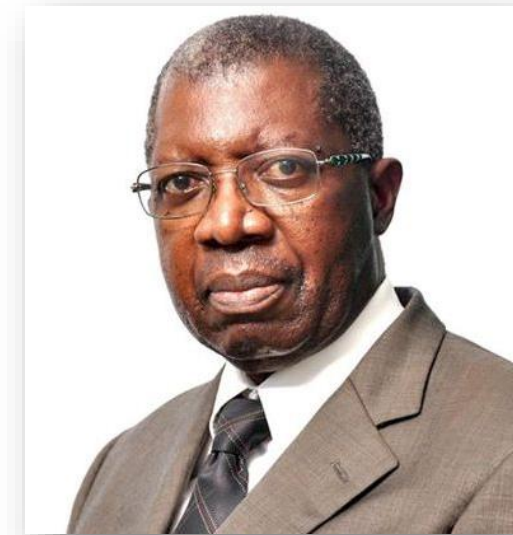
## Who is providing the support?

Government of Malawi, WFP, UNICEF, FAO, RCO

## Who else is involved?

A multi-sectoral high-level Advisory Board, and technical team, drawing from expertise in the Government, private sector, NGOs, CSOs, media, academia, and the international community

**When does it report?** Q1 2019



Hon. Justin C. Malewezi