

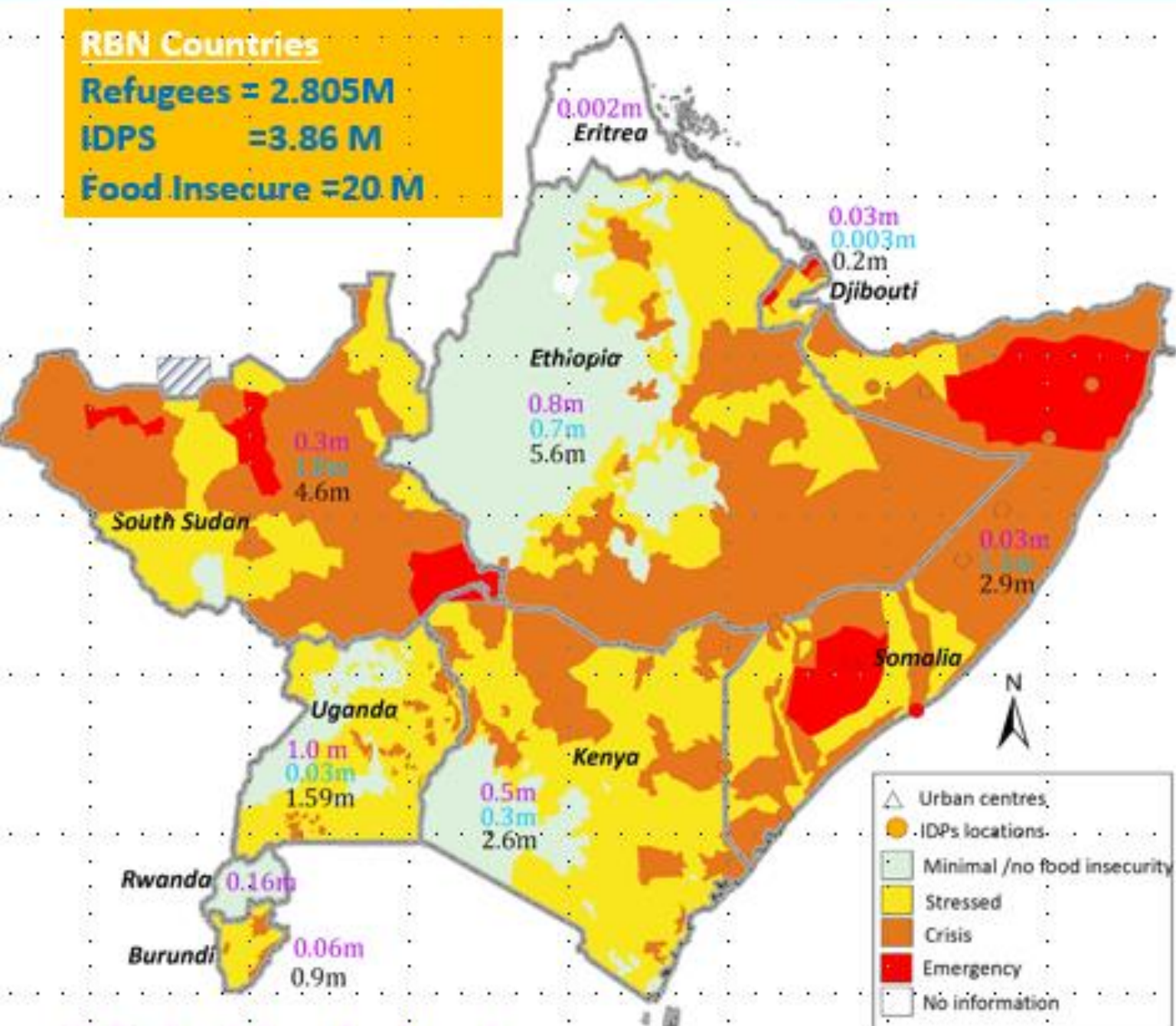


East and Central Africa Regional Overview

WFP Executive Board: February 2017



RBN Countries
Refugees = 2.805M
IDPS = 3.86 M
Food Insecure = 20 M



Areas of Greatest Concern

- Drought: Ethiopia, Kenya, Somalia
- Protracted conflict: South Sudan and Burundi
- Over 20 million people in crisis and emergency food insecurity levels
- Regional trade restrictions hamper food purchases
- Urgent scale up needed to prevent catastrophe



Wider and deeper impact than 2010/2011 drought

Over 11 million people across Ethiopia, Kenya and Somalia in crisis and emergency food insecurity condition

Risk of **catastrophic malnutrition** levels in 2017

Governments of Kenya and Ethiopia taking the lead in drought response, with WFP and partner support

Somalia – Preventing Famine



Close to 3 million people urgent need food assistance

363,000 children under five acutely malnourished

71,000 severely malnourished and facing **high risk of disease and death**

Regional implications include refugee and livestock flows

US\$ 374 million to cover life-saving food assistance and nutrition needs



Food insecurity and malnutrition at unprecedented levels
Pockets of famine affect 100,000 people in Southern Unity
Additional scale-up: Assistance to 4.1 million people planned in 2017
1.6 million South Sudanese refugees, with massive influx in Uganda
US\$205 million urgently needed for relief and prepositioning



Thank you