

# Responding to Emergencies

---

How WFP handles the onset of crises



**Briefing for Executive Board Members**

# Responding to Emergencies

---

## WFP and Emergencies

Emergency Preparedness

Emergency Response

## WFP and Emergencies

---

An Emergency Operation (EMOP) meets the relief food needs of people displaced or affected by conflict, or of victims of natural disasters or other crises

- In 2005 and 2006 WFP operational expenditures on EMOPs exceeded US\$ 1 billion. In 2007 was around US\$ 850 million

# WFP and Emergencies

WFP preparedness and response framework



**KNOWLEDGE BASE**  
Comprehensive Food Security & Vulnerability Analysis (CFSVA)

# Responding to Emergencies

---

WFP and Emergencies

Emergency Preparedness

Emergency Response

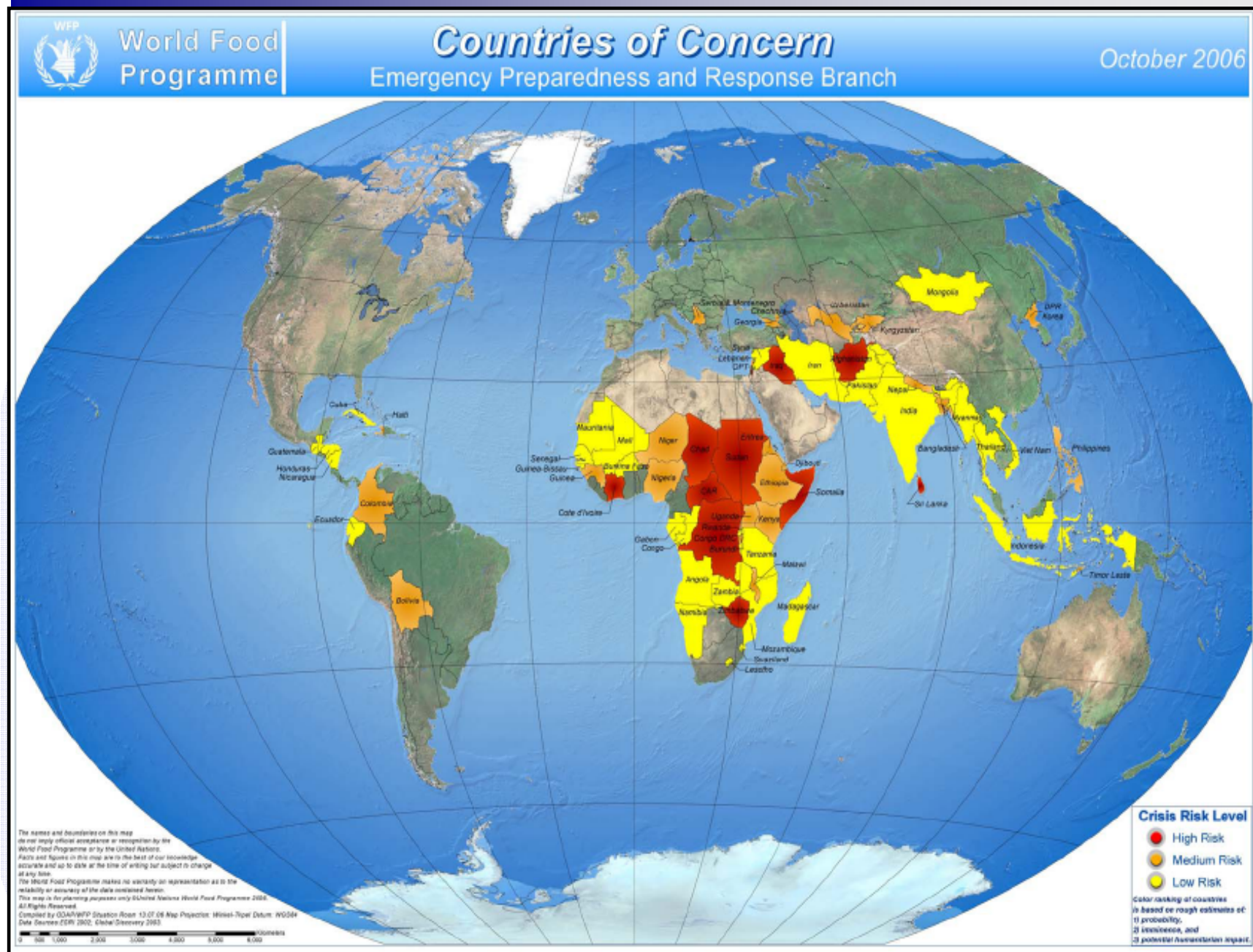
# Emergency Preparedness

---

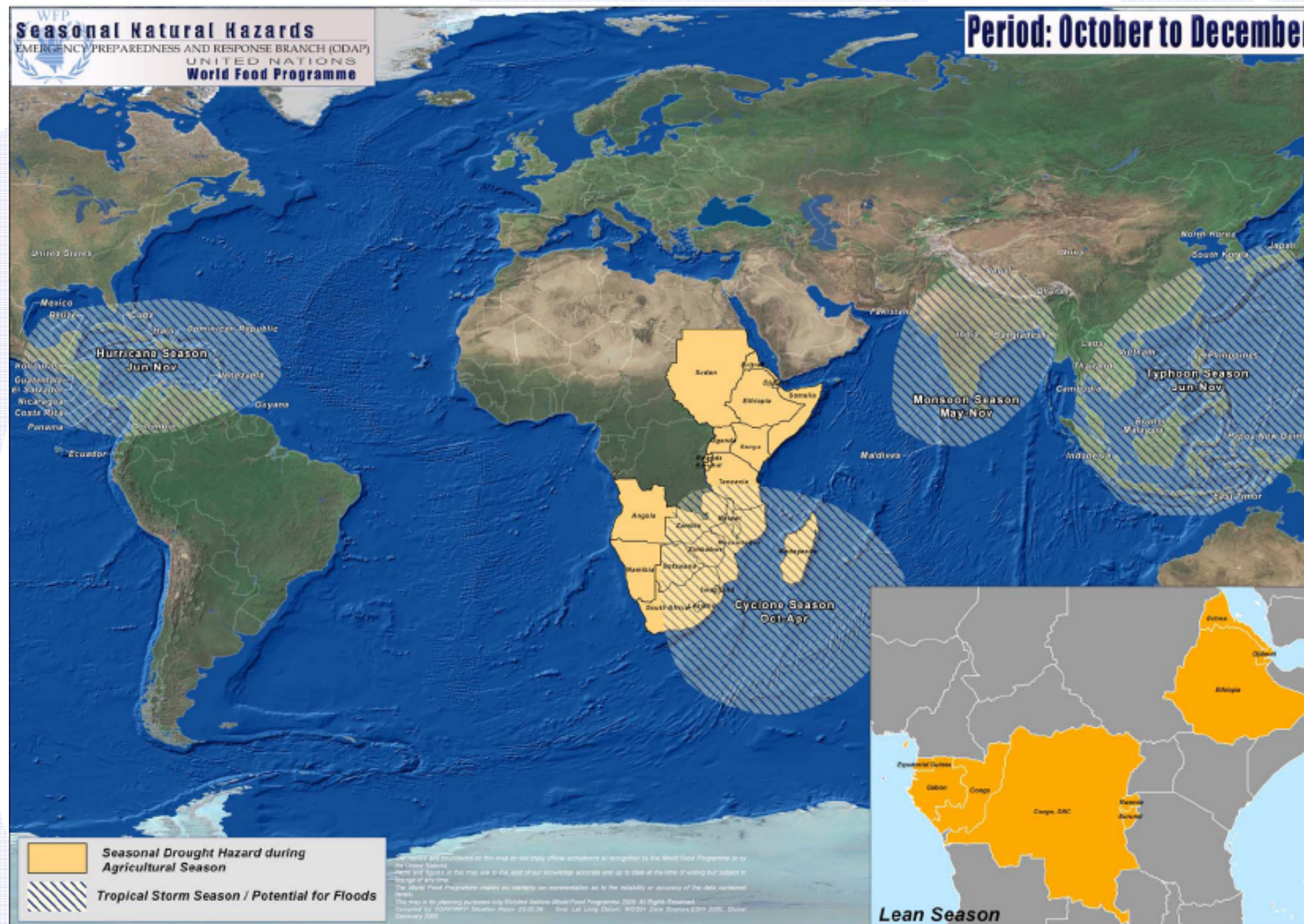
## Early Warning

- Daily monitoring of over 160 information sources
- Covers natural hazards, socio-political events
- Predictive, not reactive
- Integrated with Regional Bureaux
- Aimed at triggering preparedness actions

# Emergency Preparedness



# Emergency Preparedness

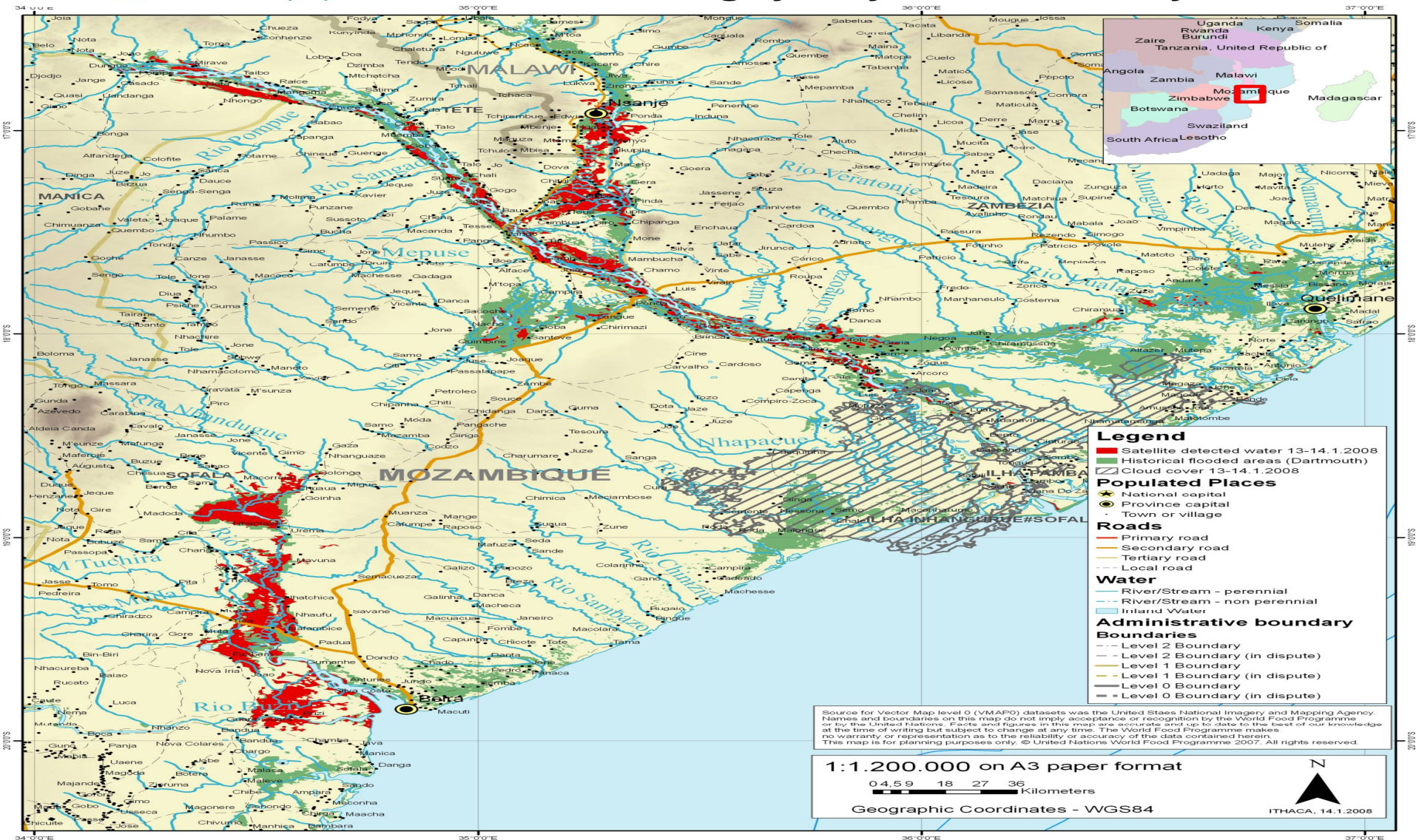




# Emergency Preparedness



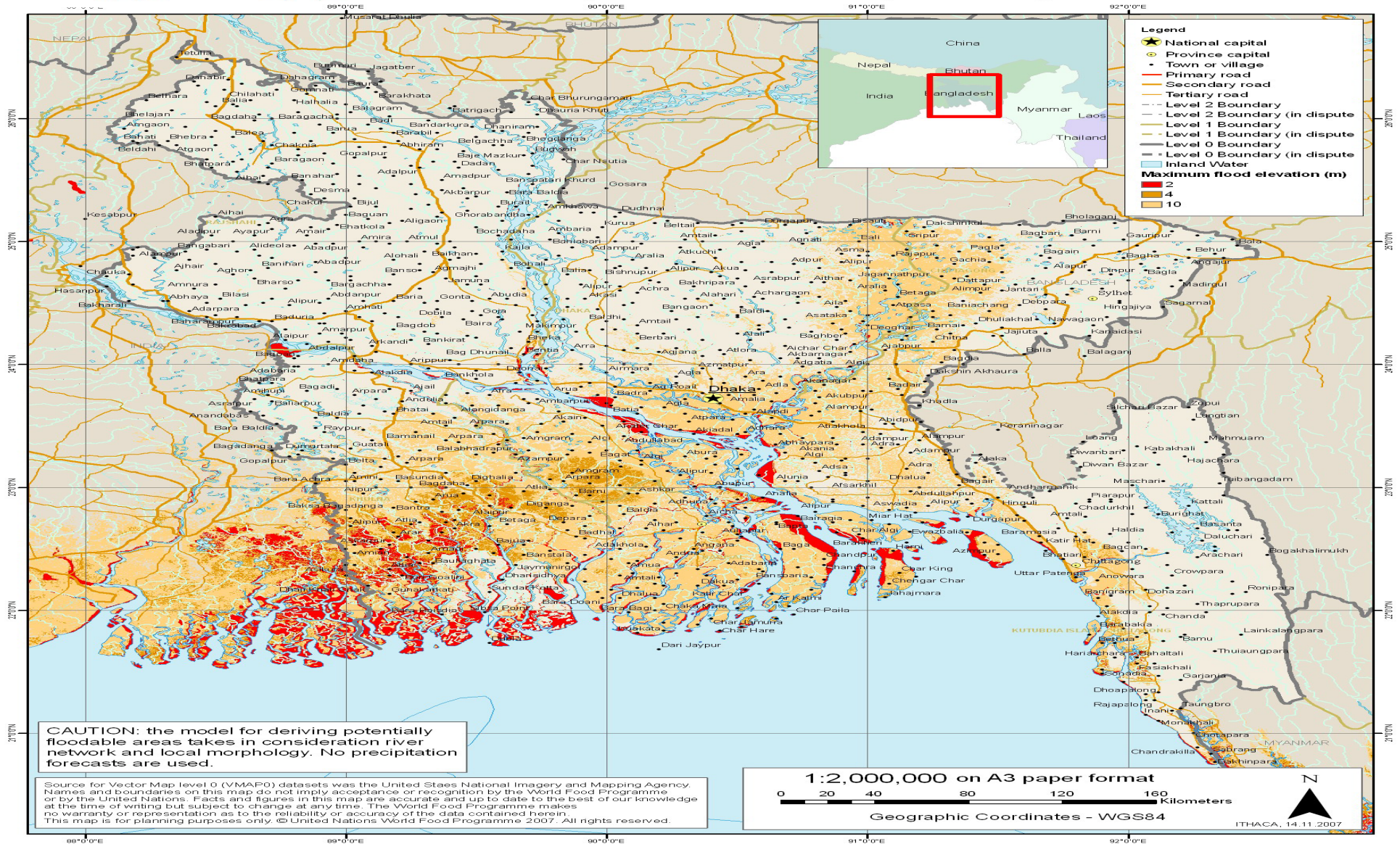
Produced by ITHACA in cooperation with WFP  
**Mozambique. Zambeze, Shire, Pongue, Buzi flood monitoring**  
**Modis satellite imagery analysis - 13-14 January 2008**



# Emergency Preparedness



Produced by ITHACA in cooperation with WFP  
**Bangladesh Tropical Cyclon Sidr, November 2007**  
**Preliminary identification of potentially floodable areas**





# Responding to Emergencies

---

WFP and Emergencies

Emergency Preparedness

Emergency Response

# Emergency Response

---

3 classifications of WFP emergencies

**CORPORATE**

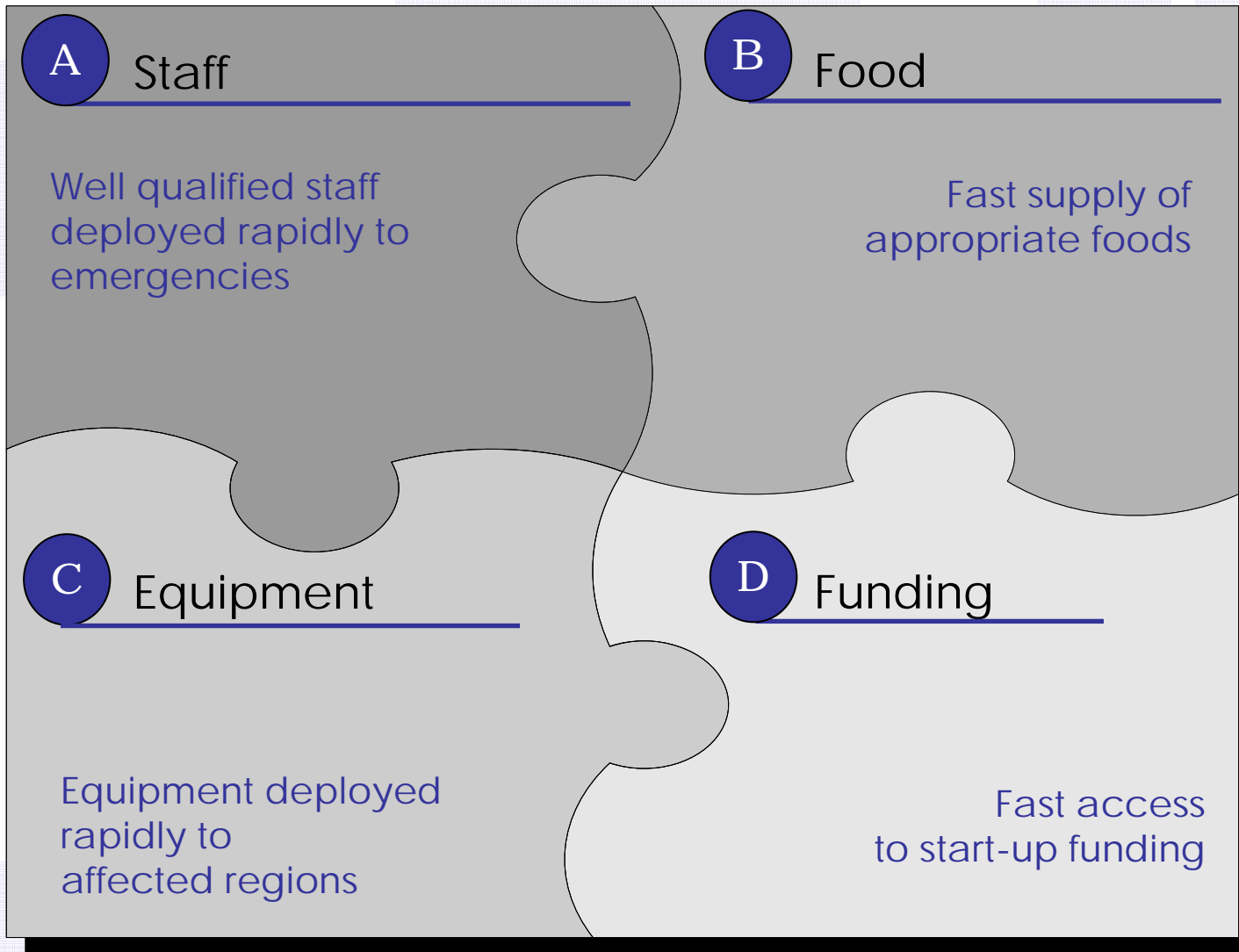
**REGIONAL**

**COUNTRY**

WFP needs to have the capacity to respond to 4 corporate emergencies occurring in the same year

# Emergency Response

---



# Emergency Response

**Well qualified staff deployed rapidly to emergencies**

A

## Staff

- Where do staff come from ?
  - ✓ **All WFP staff are on standby**
  - ✓ **WFP uses a wide network of standby partners**
- How are they deployed ?
  - ✓ **Field-level emergency coordinator defines needs**
  - ✓ **HQ emergency coordinator arranges deployment**
  - ✓ **First wave, including start-up team**
  - ✓ **Second wave after three months**

# Emergency Response

**Rapid supply of appropriate foods**

B

## Food

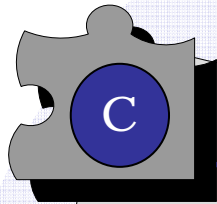
- Where does food come from ?
  - ✓ **UN Humanitarian Response Depots**
  - ✓ **Borrowings / diversions**
  - ✓ **Local / regional purchases**
- What types of food are provided ?
  - ✓ **High-energy biscuits**
  - ✓ **Specialised products for the malnourished**
  - ✓ **Bulk commodities**



# Emergency Response

---

**Equipment deployed rapidly to affected regions**



## Equipment

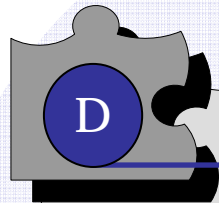
---

- Where does WFP's emergency response equipment come from ?
  - ✓ **UNHRD network**
  - ✓ **Vehicle leasing pool, Dubai**
  - ✓ **Long-term Agreements with suppliers**

# Emergency Response

---

**Fast access to start-up funding**



## Funding

---

- How does WFP fund emergency response ?
  - ✓ **Immediate Response Account**
  - ✓ **Working-capital financing**
  - ✓ **CERF**

