

# Bureau for Eastern, Central & Southern Africa



---

OMJ, JUNE 2008

# Strategic Issues

---

- Emerging drought in the Horn of Africa
- Recovery from natural disasters
- High food and fuel prices
- Conflict and displacement

# High Food Prices

---

- Markets Analysis group set up In East Africa
- SADC VAC assessments investigating higher price issues
- Impact assessments are being conducted with Governments, FAO, UNICEF, and others
- WFP advising Governments on response options for vulnerable people

# High Food Prices



- Maize shortages across the region
- Export restrictions in Tanzania, Malawi, Zambia
- Good harvest South Africa but maize prices are relatively high

# Food Security Update

---

## Horn of Africa

- Vulnerable due to conflict, poverty, & malnutrition
- Added shocks in 2007-8:
  - high food prices
  - drought
- Insecurity
- Low Agricultural input usage

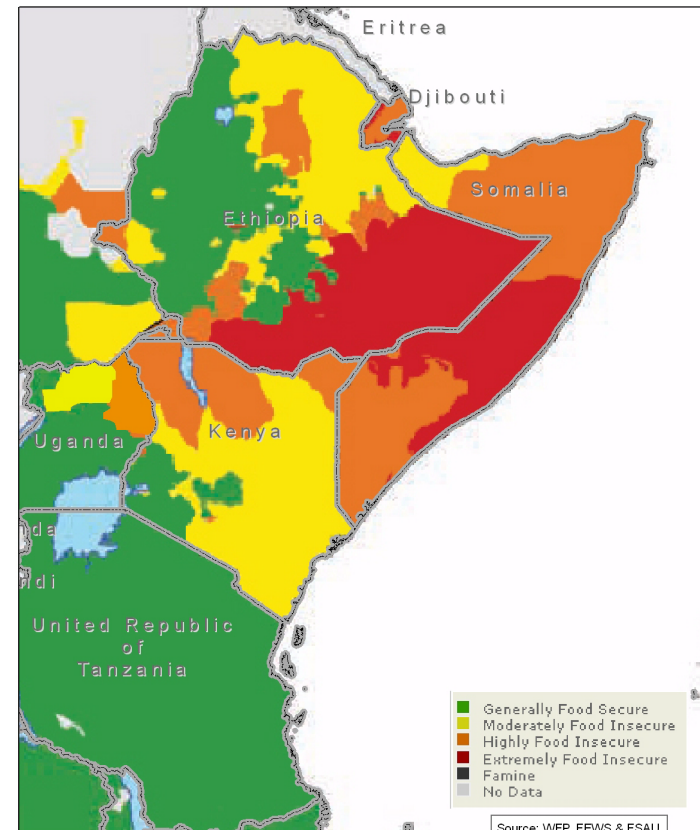
# The Drought in the Horn

- Ethiopia, Djibouti, Somalia, Kenya, Uganda

*Note: Eritrea status unclear*

- Drought is compounded by high **food and fuel prices, conflict and civil/political unrest.**

Most Likely Case Scenario of Food Insecure Areas in the Horn of Africa by September 2008



# Horn of Africa Drought

(Including Karamoja, Uganda)

<b>Number of People Affected and Food Requirements</b>		
<b>Country</b>	<b>Affected People</b>	<b>Current Shortfall (metric tons)</b>
<b>Ethiopia</b>	7,600,000	366,000
<b>Djibouti</b>	66,000	9,000
<b>Somalia</b>	2,600,000	305,000
<b>Uganda</b>	700,000	137,000
<b>Kenya</b>	900,000	166,000
<b>Total</b>	<b>11,866,000</b>	<b>983,000</b>

# Country Update - Zimbabwe

---

- **Food Security**

- Govt expects a poor maize harvest of 689,000 tons, 1/3 of annual consumption needs
- WFP/FAO Crop and Food Supply Assessment Mission (CFSAM) results expected in mid-June
- Initial cereal import projections of 1 million tons

- **Economy**

- Annual inflation rate at 355,000% in March
- Declining food production, diminishing food availability in market
- Over 80% unemployment

- **Politics**

- Election run-off in late June



# Conflict & Displacement

---

## Intensified fighting in eastern DR Congo

- *Eastern DRC >1.4 million IDPs*
- *840,000 in North Kivu*
- *90,000 new IDPs since January 2008*

# Bureau for Eastern, Central & Southern Africa



---

OMJ, JUNE 2008