

Emergency Preparedness & Response Framework

Presentation to the WFP Executive Board

08 May 2014 Rome, Italy



World Food Programme

Emergency Preparedness & Response Framework

I. Approach/Scope:

- *Replaces the 2003 Emergency Preparedness & Response (EPR) Framework, reflecting changes including Transformative Agenda, move to food assistance, and Fit-for-Purpose, etc.*
- *Builds on 2014-2017 Strategic Plan and 2014 Management Results Framework.*
- *Employs an “organizational Resilience” approach, linking EPR with Business Continuity and Crisis Management.*
- *Promotes a risk management approach.*
- *Applies to the first three months of a response.*

II. Guiding Principles:

- *Country-led EPR with Global Headquarters in support.*
- *Nationally-led responses in accordance with humanitarian principles.*
- *Accountability and transparency.*
- *Intervention as early as possible on a “no-regrets” basis.*
- *Flexibility and dynamism.*
- *EPR Strengthening based upon continual organisational “learning”, informing real-time investments.*
- *Harmonized approach with other humanitarian actors and alignment with IASC commitments (e.g. Transformative Agenda).*

Emergency Preparedness & Response Framework

Preparedness

Response

WFP

How do we get ready for unforeseen, likely and emerging events (risks) affecting vulnerable populations and/or our installations and assets?

WFP

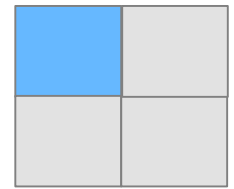
How do we respond in a timely, appropriate and effective manner?

External

How do we prepare in partnership with other potential response actors at the national and international level?

External

How do we effectively relate to the wider response?



Preparedness

Response

WFP

I. Unforeseen Risk:

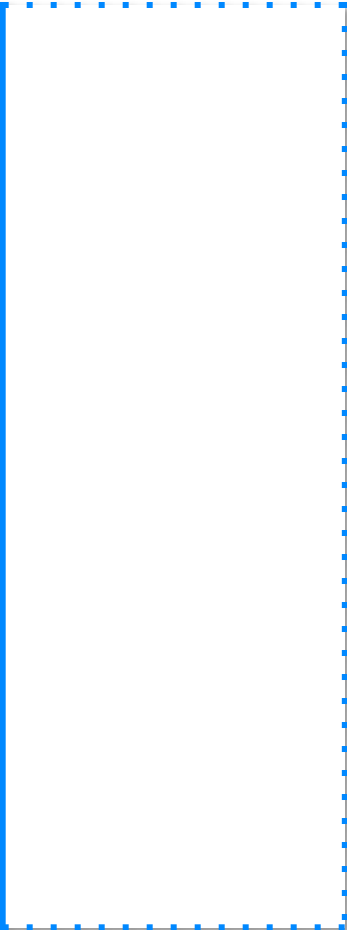
- *Generic Response Capability Model (GRCM) to assess and analyze; and*
- *Maintenance and development of Corporate Response Assets to mitigate.*

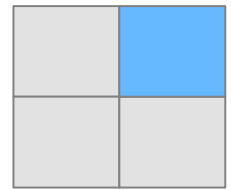
II. Likely Risks:

- *Emergency Preparedness and Response Package (EPRP) at regional and country levels to assess, analyze and mitigate.*

III. Emerging Risks:

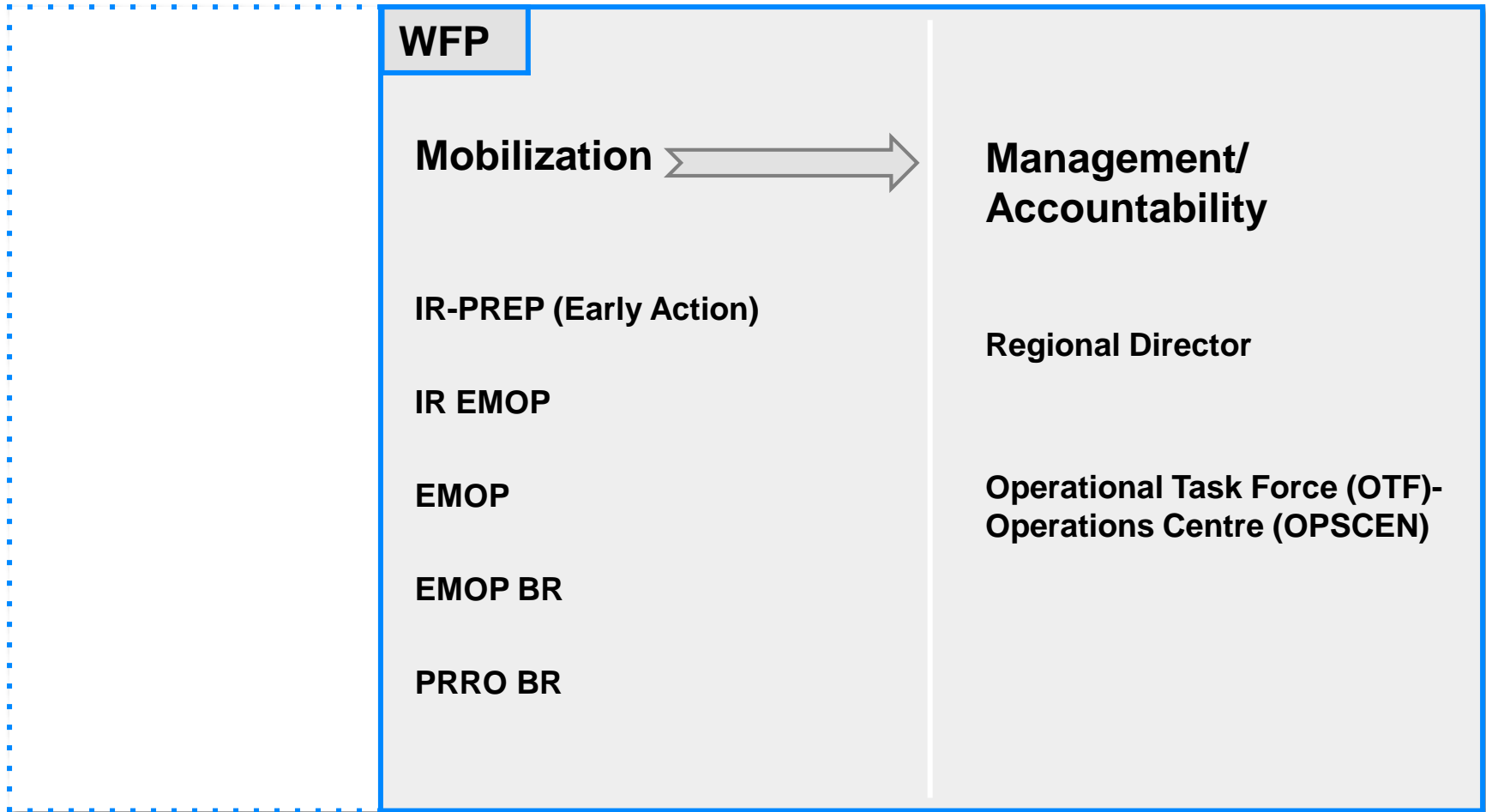
- *Early Warning (Global, Regional and Country level) to assess and analyze; and*
- *Early Actions to mitigate.*

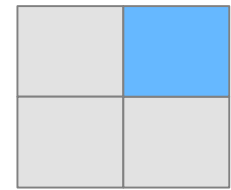




Preparedness

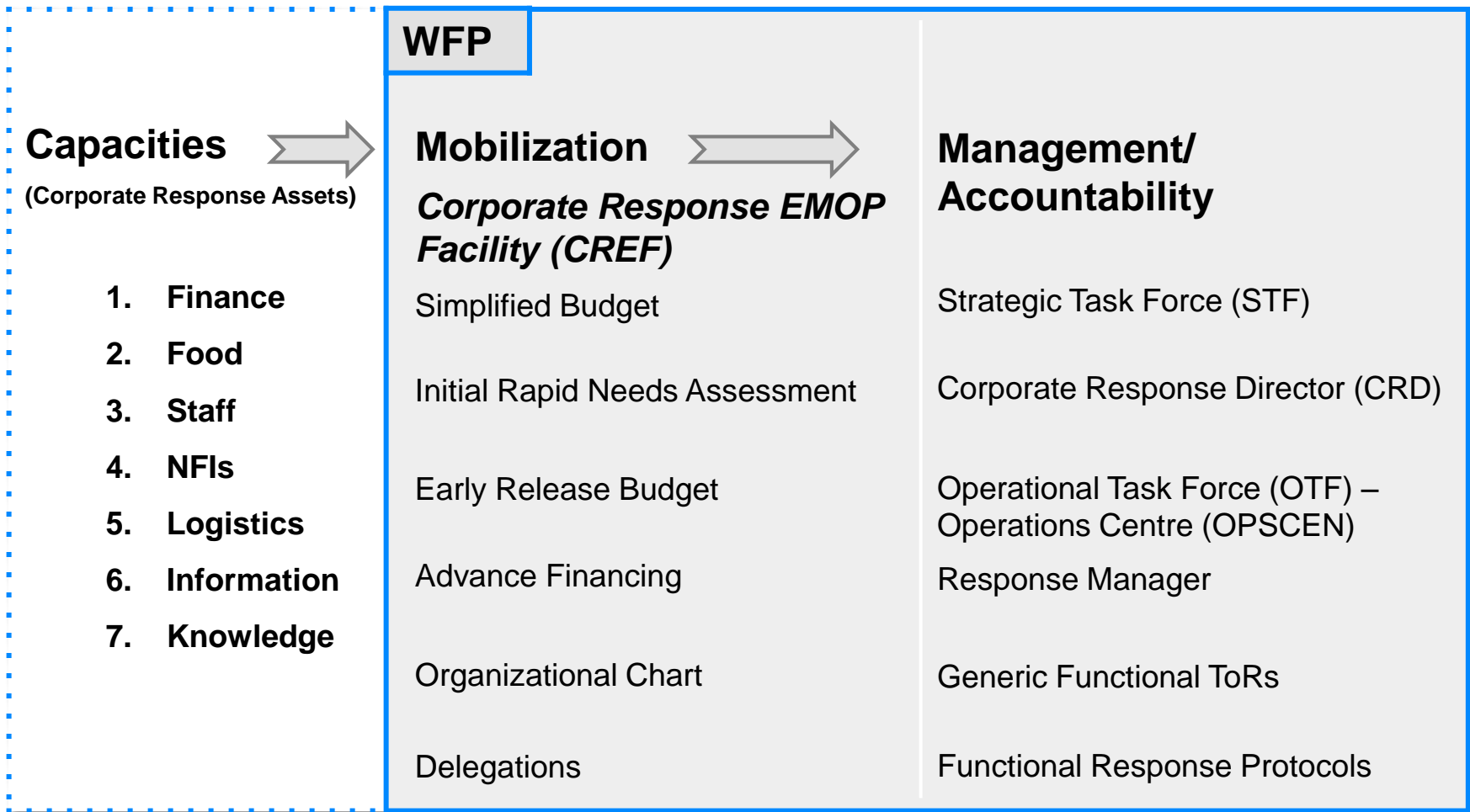
Response (Level 2)

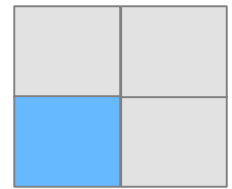




Preparedness

Response (Level 3)





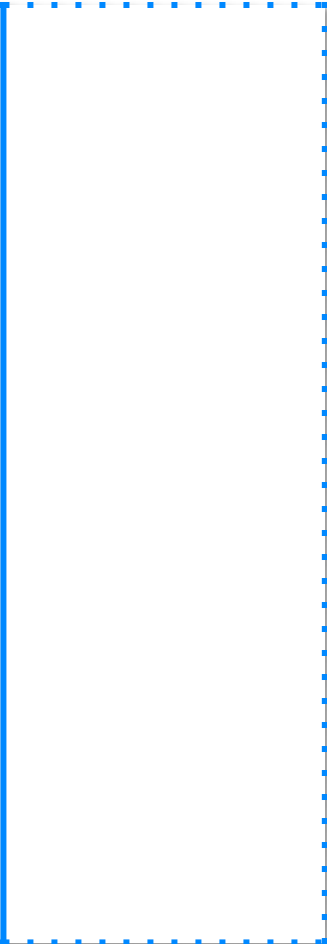
Preparedness

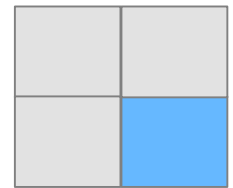
Response

External

- I. **National Readiness (National Disaster Management Authorities, Line Ministries, local civil society, local red cross/red crescent societies, local private sector, local media, community-based organisations, etc.):**
 - **Capability Development.**
 - **Strengthen WFP's ability to augment.**

- II. **International and other Response Actors:**
 - **IASC.**
 - **UNHCR (Refugees).**
 - **Non- IASC (Civ-Mil actors, Regional Organizations, Private Sector, etc.).**





Preparedness

Response

External

- I. **National Response augmentation* through partnership arrangements, protocols, standby facilities, etc.**

- II. **Coherence with International and other Response Actors:**
 - **IASC (as per Transformative Agenda).**
 - **UNHCR (as per Refugee Coordination Model).**
 - **Non- IASC (e.g. guidance on Civ-Mil, Regional Organizations, Private Sector, etc.)**

* Provided Humanitarian Principles and IHL (International Humanitarian Law) are not compromised.

Emergency Preparedness & Response Framework

Next Steps:

- Realise the EPRF through completion of the PREP investment and related mainstreaming.
- Institutionalise EPR Strengthening, Post-PREP.
- Undertake EPR-related formal evaluations.
- EPR Policy formulation (2014-15) building upon EPRF.
- Presentation to EB (November 2015).

Thank You!