



World Food Programme



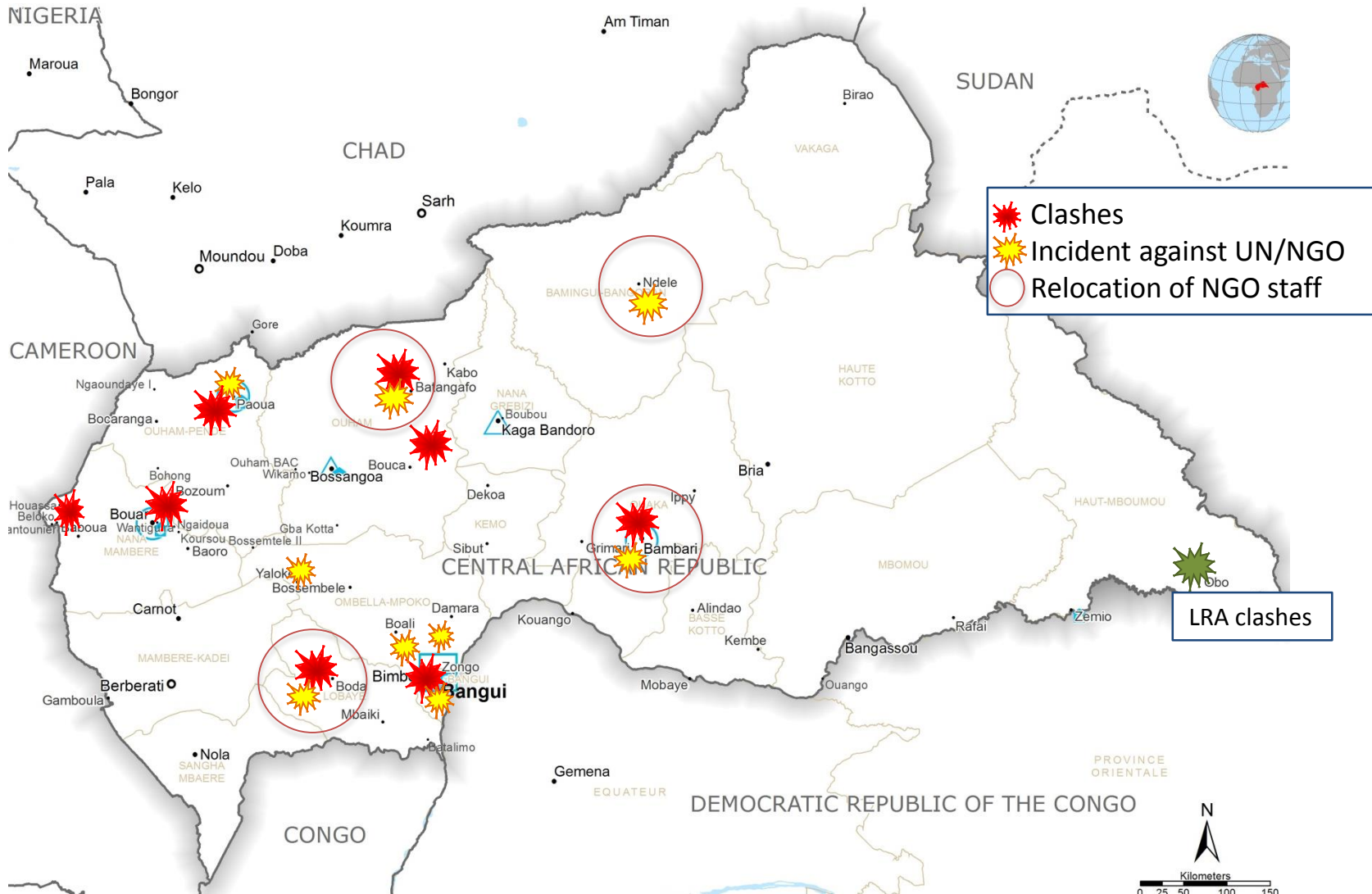
West Africa L3 Emergencies

Special Operational Briefing

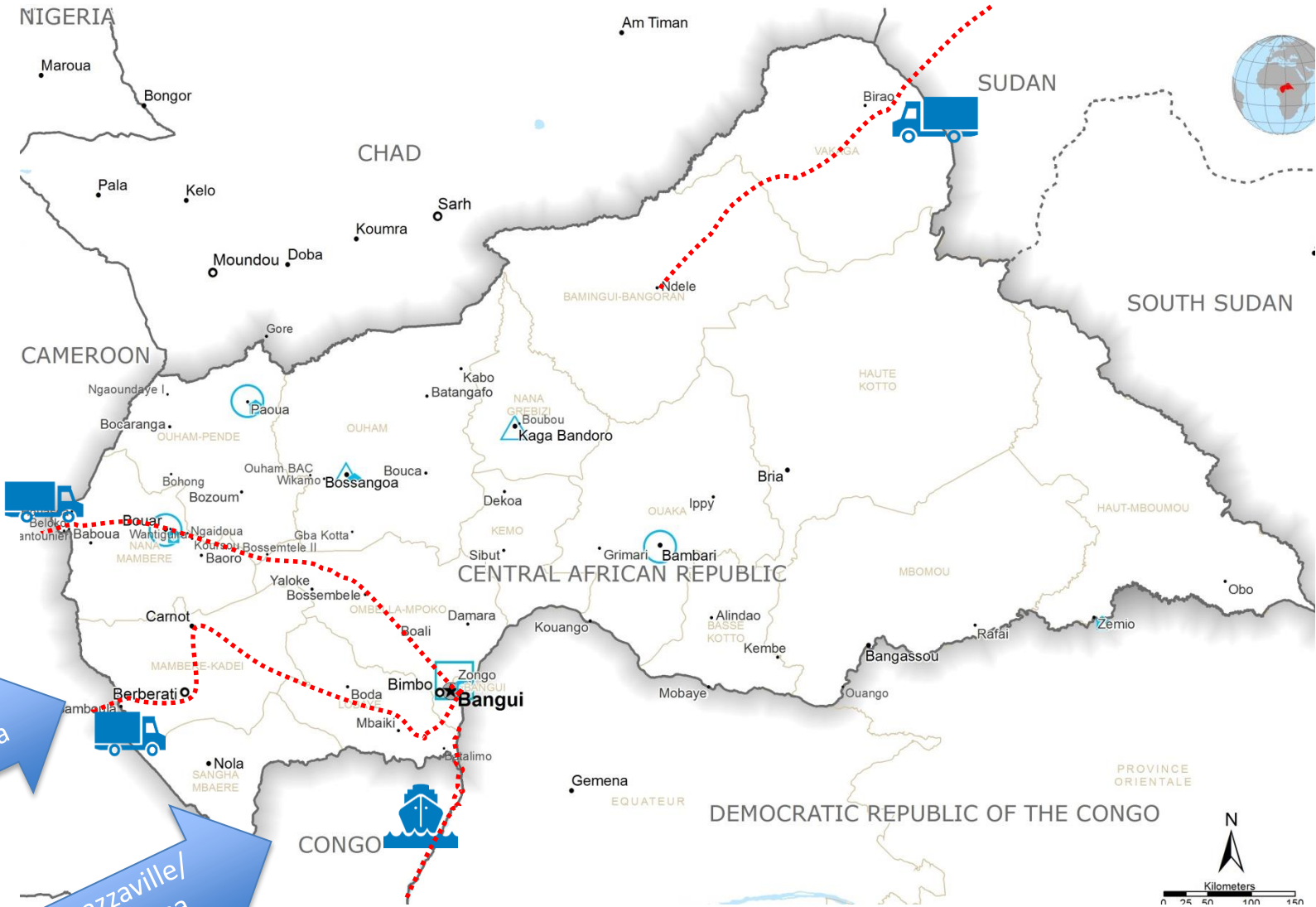
Presentation to the
WFP Executive Board

FAO Red Room – 04 September 2014

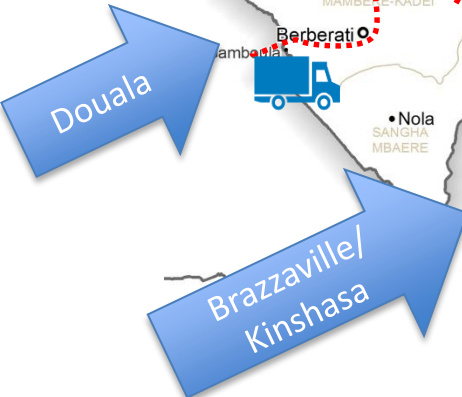
C.A.R. – Security Update



C.A.R. - Logistics Corridors



SITUATIONAL UPDATE



C.A.R.– Nutrition Update

Prevention activities continue

- WFP continues to implement Blanket Supplementary Feeding alongside food distribution activities. On average, **more than 45,000 young children at-risk** are assisted per month.

Continued expansion and reinforcement of treatment

- Currently, treatment of MAM is provided in **93 health structures**. An expansion to an **additional 20 centers is planned** and will ensure minimum coverage for all regions.
- Since January, WFP has provided treatment to as many as **12,000 moderately acute malnourished children aged 6-59 months** and **7,500 malnourished PLW**.
- Recent performance indicators show an **88% recovery rate**, and a **5% default rate**.

MUAC Screenings

- Situation appears to be **stabilizing in sites** where a **package of health, WASH, and nutrition** interventions is being implemented.
- Where screenings reveal concerns, WFP identifies partners to expand TSF coverage.

Data collection

- SMART Survey: Data collection is complete and analysis is underway.

C.A.R. Regional – Spotlight Cameroon



Reduced admission rates

- Active screening efforts in camps, entry points, and with community health workers is enabling early detection and referral of malnourished cases, thus pre-empting the development of medical complications due to acute malnutrition. Combined with the robust nutrition package that has been rolled out by WFP and partners, from week to week, a **decrease in admissions to in-patient treatment centers** is observed.

Reduced default rates (SAM)

- The provision of rations for caretakers at in-patient treatment centers has helped reduce the default rate for SAM from **nearly 24% in mid-May**, to **under 5% in by July**.

Reduced mortality rates

- Partners report a significant drop in the mortality rate at in-patient Nutrition treatment centers. Compared to **18.4% in mid May**, the mortality rate had dropped to **4.75% by July** – still of concern, but a significant decrease.

C.A.R.– Resource Mobilization

2014 Donors: CAR EMOP200650

DONOR	AMOUNT (USD million)
USA	29.91
C.A.R.	12
Germany	6.13
UN CERF	5.03
Japan	4.56
European Commission	2.73
Canada	2.69
Private Donors	2.56
France	1.56
Finland	1.37
Switzerland	1.11
Ireland	0.68
Republic of Korea	0.63
New Zealand	0.42
Luxembourg	0.41
Spain	0.19
Brazil	0.13
Monaco	0.10
Slovenia	0.04
Lithuania	0.03
Andorra	0.01
TOTAL	72.295 million

**Net Funding
Requirements
(Sep-Dec 2014)**

US\$ 14.7 Million

**2014
Gross Needs Funded**

65.2 %

C.A.R. Regional – Resource Mobilization

2014 Donors: Cameroon EMOP200689

DONOR	AMOUNT (USD million)
USA	5
European Commission	1.74
Finland	1.02
UN CERF	0.8
Switzerland	0.56
France	0.53
Luxembourg	0.34
TOTAL	9.991 million

**Net Funding
Requirements
(Sep-Dec 2014)**

US\$ 4.5 Million

**2014
Gross Needs Funded**

56.5 %

Figures in USD
Source: Financial Tracking Service,
02 September 2014

SRP 2014 WFP Appeal Requirements & Funding Includes EMOP \$ SOs

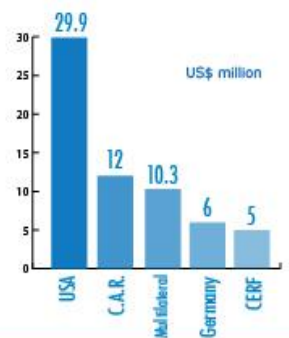


Received **80.6 million**
Requirements **109.8 million**

BENEFICIARIES

IN JULY
400,000
BENEFICIARIES REACHED

TOP 5 DONORS
(C.A.R. - EMOP 200650)



UNHRD

Source: UNHRD, 01 August, 2014

- CARGO DISPATCHED**
699 MT
- VALUE OF GOODS DISPATCHED**
USD 5.1 million
- PARTNERS SERVED**
8
- TOTAL CONSIGNMENTS**
43

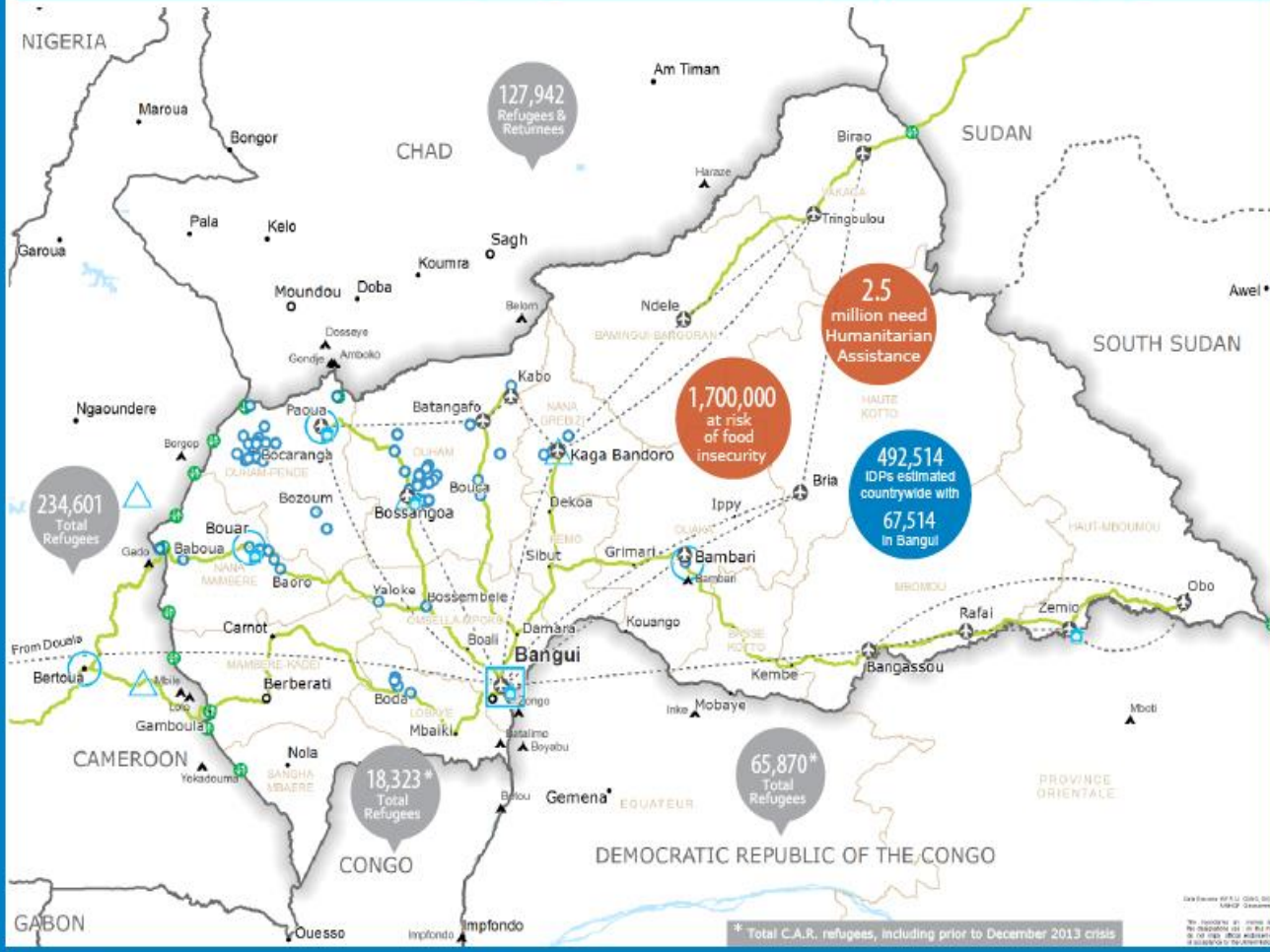
UNHAS (June 2014)

- PASSENGERS TRANSPORTED**
1,316
- LIGHT CARGO TRANSPORTED**
18.48MT
- PEOPLE EVACUATED**
33
- HUMANITARIAN ENTITIES SERVED**
54

CLUSTERS Requirements & Funding (US\$)

Source: Financial Tracking Service, 02 September 2014

Cluster	Received (%)	Requirements (US\$)
Food Security	48%	86 million / 180 million
Logistics	70%	7.2 million / 10.2 million
Emergency Telecommunications	19%	0.35 million / 1.9 million



- Country Office
- Field Office
- Sub Office
- Warehouse
- Refugee / IDP Camp
- Open Border Crossing Point
- Road Supply Route
- National Capital
- Major Town
- Intermediate Town
- Small Town
- International boundary line
- Province Boundary
- UNHAS Connection
- UNHAS Route

WFP
Clusters

WFP LEVEL 3 EMERGENCY
C.A.R. SINCE 11 DECEMBER 2013

EBOLA OUTBREAK – WFP Niche

CARE

COMMON SERVICES

INFRASTRUCTURE SUPPORT

DELIVERING
FOOD
ALONGSIDE
HEALTH
RESPONSE

What:
ENHANCED
FOOD RATIONS

COMMON
LOGISTICS
SERVICES FOR
PARTNERS

What:
PLANES
HELICOPTERS
SUPPLIES

PROVIDING
INFRASTRUCTRE
SUPPORT FOR
HEALTH
PARTNERS

What:
MEDICAL CENTRES
&
ACCOMMODATION

3 PILLARS OF WFP RESPONSE

EBOLA OUTBREAK – Adapting

With the WHO, WFP has developed **Distribution Guidelines** for WFP and partner staff to mitigate risk of exposure for personnel and beneficiaries, guidelines cover:

- Arrangements to **mitigate crowds** shorten wait time before and during distributions
- **Rotate staff** to mitigate physical and mental fatigue
- Have **stand-by health workers** on site in case of suspected illness at distribution site
- Provision of **protective materials** for staff and partners (gloves, boots) and sanitizing solutions (chlorine)
- Provision of other **hygiene, sanitation and medical materials** required for WFP premises as well as for staff and dependents (sanitizer, thermometers, etc)

A **Public Health Specialist** is in the region meeting with staff and partners to assist with the roll-out of the guidelines and train staff in proper mitigation measures. Refresher trainings will be carried out systematically and frequently.

WFP is working with MSF, WHO, CDC, and all health partners on the ground.

EBOLA OUTBREAK – Innovating Tools

WFP is adapting its innovative tools to support health partners and to better respond in the complex operating environment:

- **Support to health partners:** At the request of the Government and health partners, WFP is working with Splash in Sierra Leone to adapt WFP's mobile voucher technology for the payment of health workers.
- **Monitoring markets and food security:** WFP's mVAM (mobile VAM) technology is being introduced to West Africa for the Ebola response. Survey respondents will be asked about markets and food prices, livelihoods, and household food security indicators via a telephone operator or SMS.



mVAM survey respondent in camp near Goma, DRC

EBOLA OUTBREAK – Wider Impact

The first priority is to support the health response to the Ebola crisis.... However:

Food security – Availability and access to food

- **Macro:** Traditional cross-border trade between the primary affected is an aggregate factor affecting food security; this has been disrupted by border closures.
- **Meso:** Domestic food output flows from rural to urban areas, and the flow of imported staples from urban to rural areas interrupted by movement restrictions.
- **Micro:**
 - **Livelihood activities:** Household members lost; Trade fairs/markets banned; agricultural activities disrupted by low access to inputs and discouraged communal farming; the hunt/sale of bush meat banned.
 - **Purchasing power:** Exacerbating loss of income, available market monitoring points to sharp price rises for imported and domestic food.

Study: A light WFP/FAO CFSAM is anticipated (to adapt to current context).
WFP mVAM monitoring.

Overall - the economic toll of managing the crisis, risks for reduced foreign investment, and the temporary blockades of overland, air and port commerce imposed may have important **impacts at the macro-economic level.**

EBOLA OUTBREAK – Resource Mobilization

2014 Donors: Regional EMOP

DONOR	AMOUNT (USD million)
TOTAL	0 million

Net Funding Requirements
(Sep-Dec 2014)

US\$ 77.9 Million

2014
Gross Needs Funded

0%

2014 Donors: Regional SO

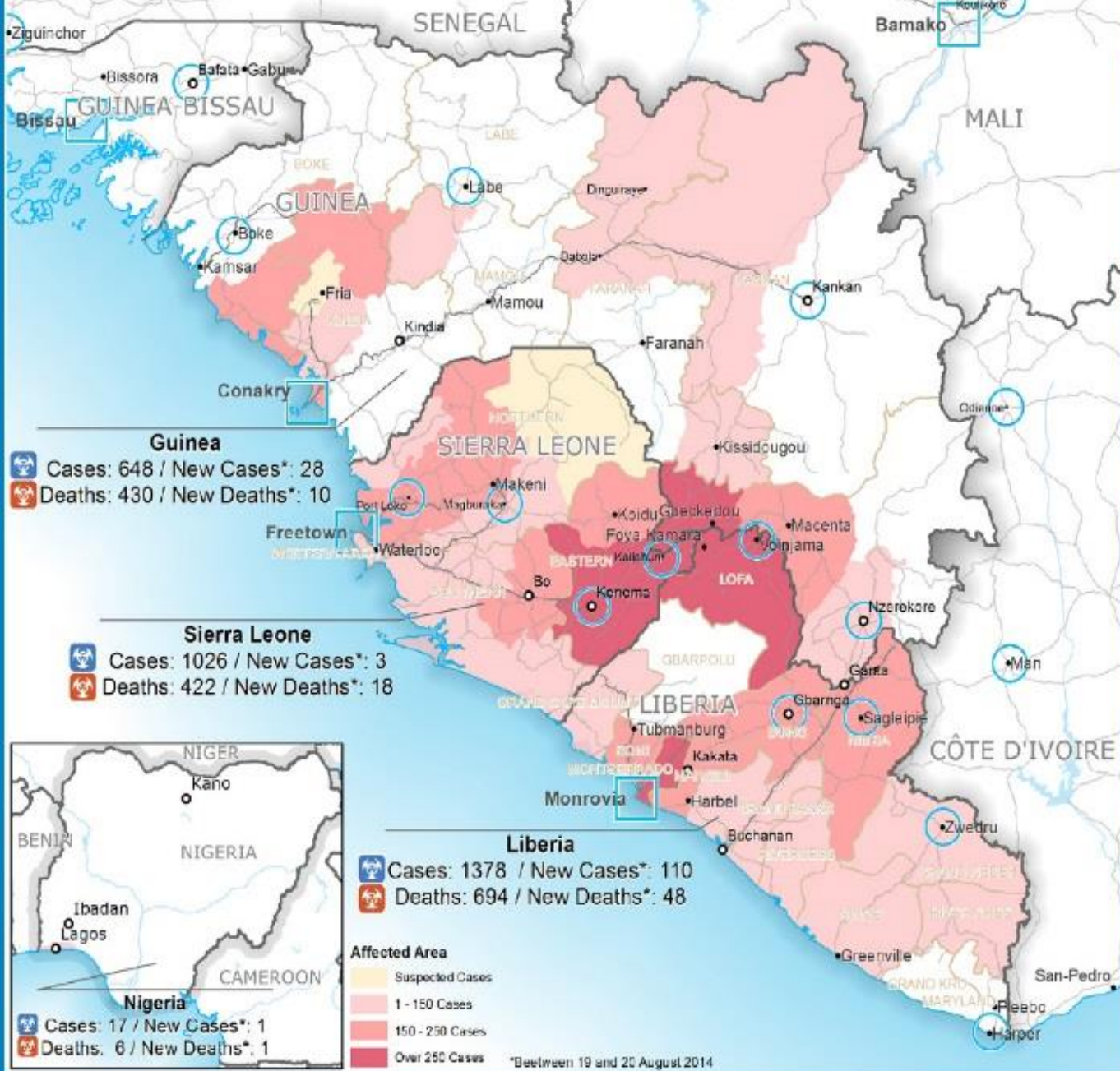
DONOR	AMOUNT (USD million)
UN CERF	2.55
USA	0.25
TOTAL	2.8 million

2014
Gross Needs Funded

38.3%

West Africa Ebola Dashboard

Date created: 28 August 2014



Regional EMOP 200761	Regional SO 200760
25 August to 25 November 2014	14 August to 13 October 2014
<p>0%</p> <p>0 million / 69.8 million</p>	<p>3.4%</p> <p>250,000 / 7.3 million</p>
PLANNED BENEFICIARIES (For Regional EMOP 200761)	
GUINEA	464,000
SIERRA LEONE	400,000
LIBERIA	449,000
REACHED BENEFICIARIES	
GUINEA (May-Aug 2014)	39,584
SIERRA LEONE (14-21 Aug 2014)	16,250
LIBERIA (14-21 Aug 2014)	18,087
TOTAL AFFECTED (as of 26 August)	
3,069 CASES	1,552 DEATHS
UNHRD (since 1 August 2014)	
14.5 MT CARGO DISPATCHED	USD 206,800 VALUE OF GOODS DISPATCHED
10 PARTNERS SERVED	10 TOTAL CONSIGNMENTS



- Confirmed Cases
- Deaths
- Country Office
- Sub Office
- National Capital
- International Boundary
- First Level Boundary
- Major Town
- Intermediate Town
- Small Town

WFP LEVEL 3 EMERGENCY SINCE 13 AUGUST 2014
 Contact: WFP.OPSCEN@wfp.org
 Website: www.wfp.org