

Presentation to the WFP Executive Board

*Global security environment and significant incidents
Christophe Boutonnier, Director Field Security Division*

10 July 2015



World Food Programme

1. Major factors affecting WFP in first half of 2015

1. Major factors affecting WFP in first half of 2015

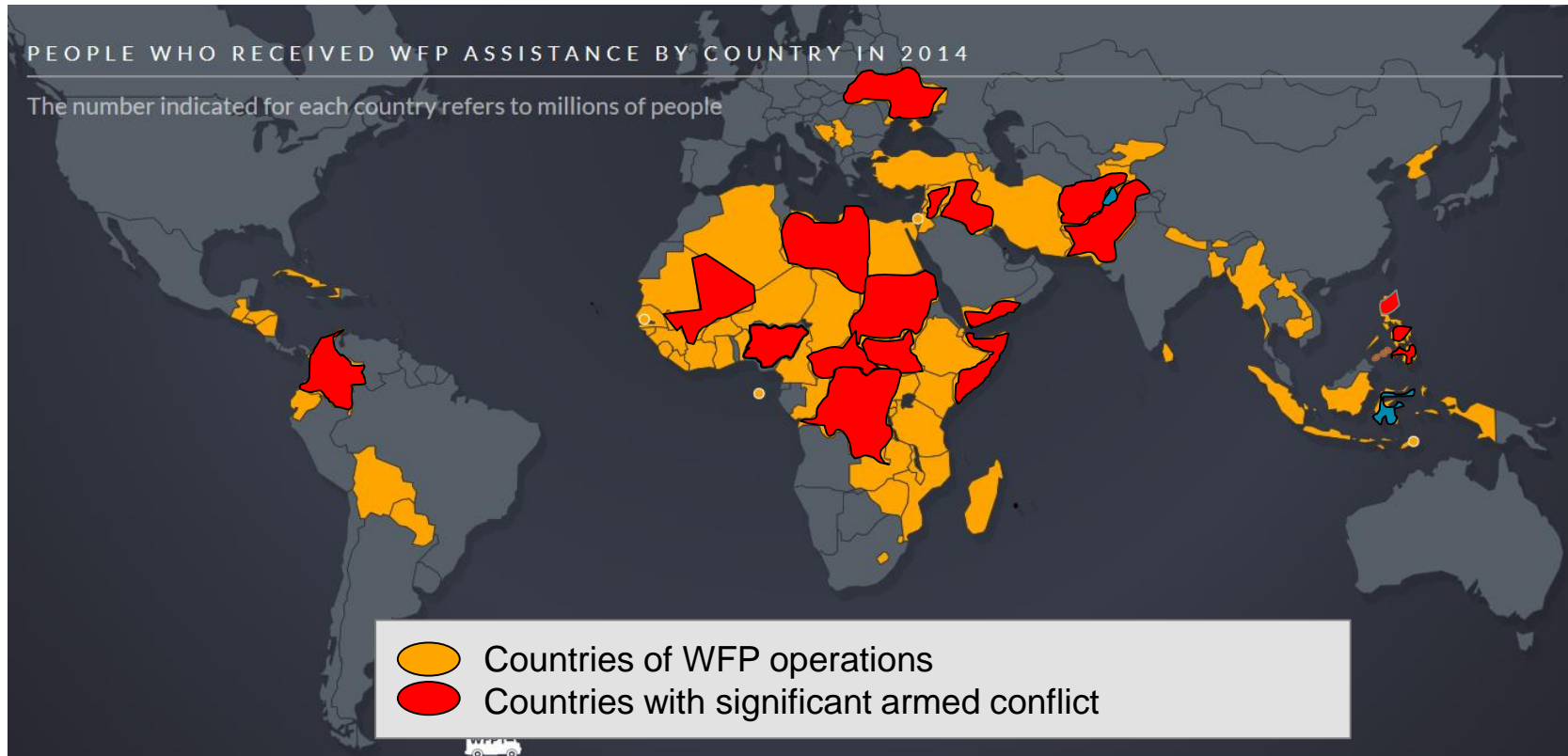
- **Exposure to armed conflict, terrorism, crime, unrest and hazards**
 - **Access constraints** in conflict areas
 - **Invasion** of compounds
 - **Killing** of partner staff
 - **Disappearing** of staff
 - **Evacuation** due to armed conflict
 - **Death** of staff in road traffic accidents

2. Global view on WFP security

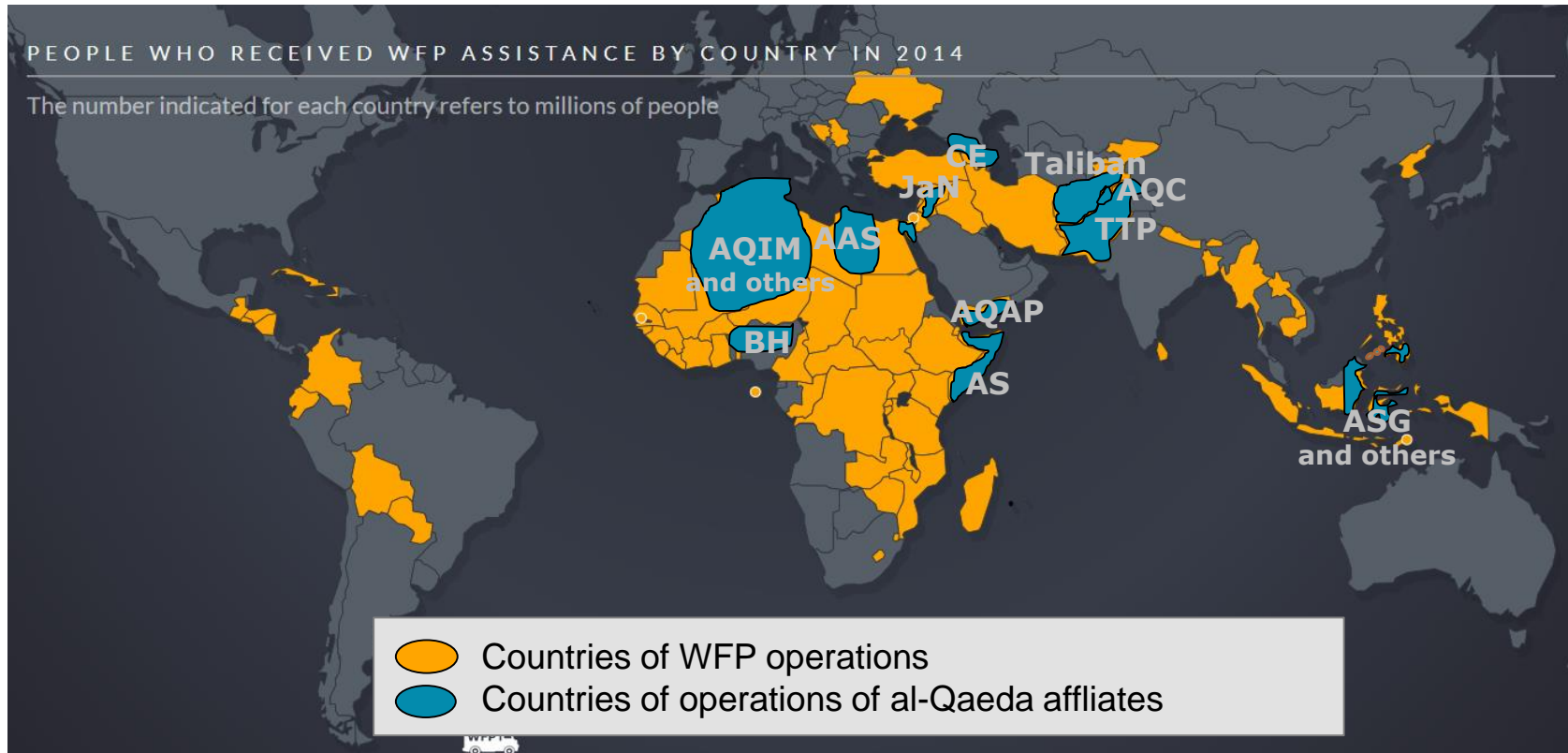
2.1 WFP in conflict areas



2.1 WFP in conflict areas



2.2 Al Qaeda and affiliated areas of operations



AAS	Ansar al Sharia (Libya)
AQAP	Al Qaeda in the Arabian Peninsula
AQC	Al Qaeed Core
AQIM	Al Qaeda in the Islamic Maghreb
AS	Al Shabaab/Harakat <i>al-Shabaab</i>
ASG	Abu Sayyaf Group
BH	Boko Haram
CE	Caucasus Emirates
TTP	Tehrik-i-Taliban Pakistan

2.2 ISIL groups areas of operations



3. Security Measures – Prevention/Mitigation

3. Security Measures

- Access Strategy
 - Pilot in Afghanistan, 2014
 - Workshop on HQ level 2014
 - Workshop at RBD, 2015
- Blast/Technical assessments
 - Deployment of blast mitigation measures, armoured vehicles etc.
- Road Safety Campaign
- Deployment of Security Analysts on RB level

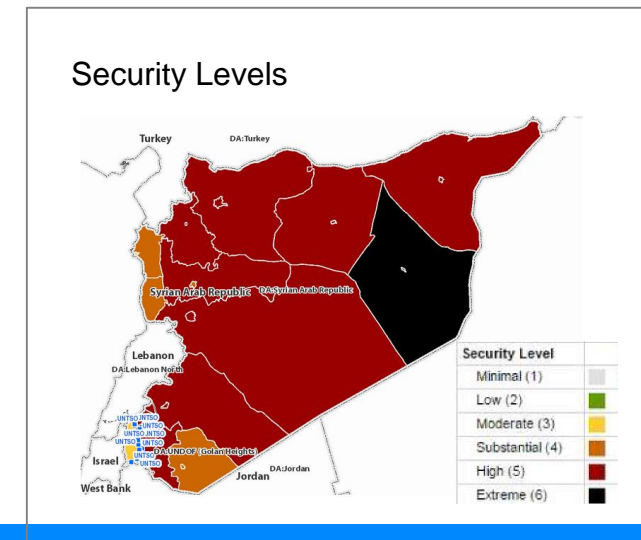
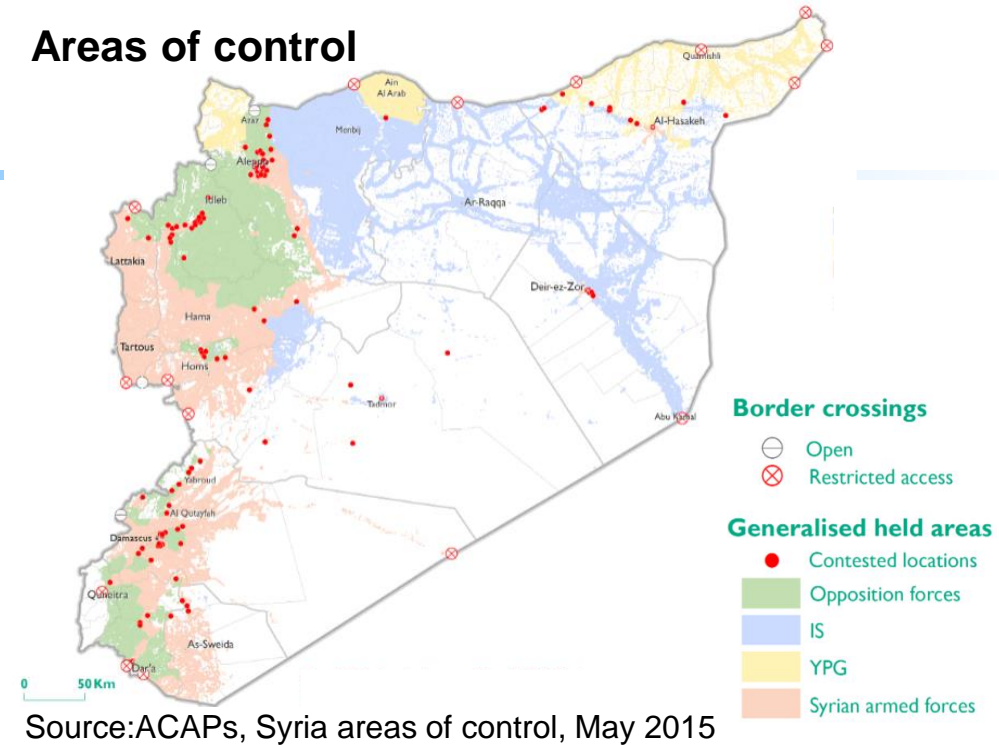
3. Questions

Thank you!

4.1 Syria: Areas of control/Security Levels

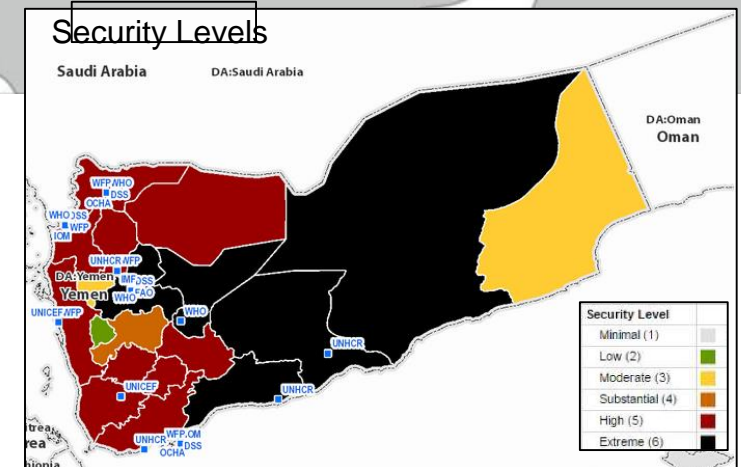
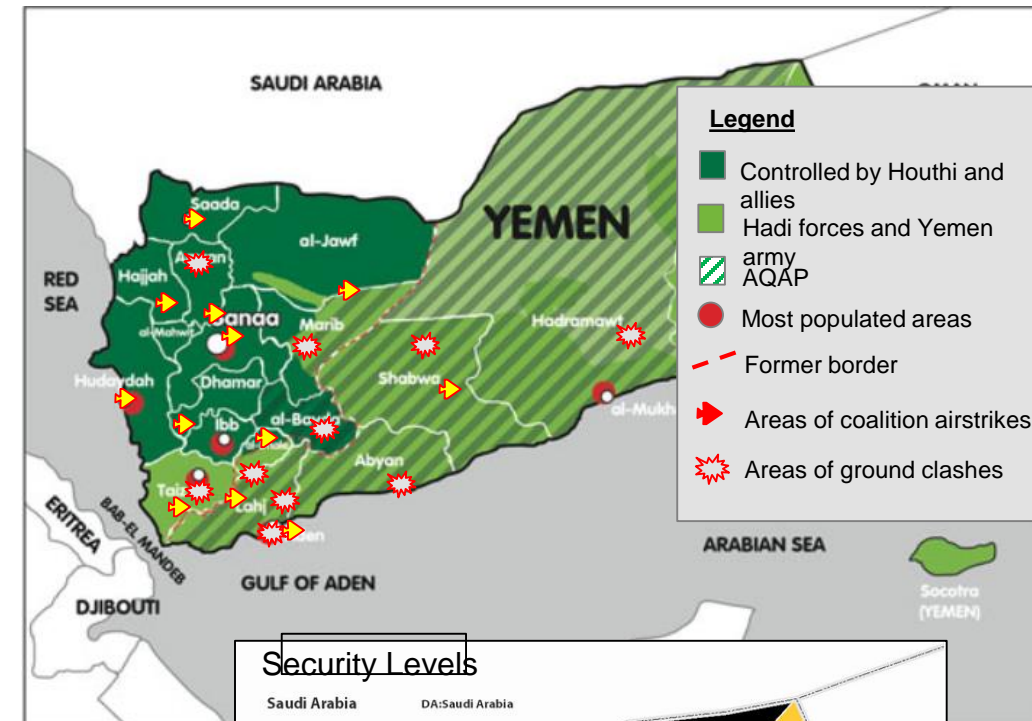
- Prolonged conflict: No end in sight
- Severe impact on humanitarian situation due to conflict
- UNHCR: Refugee figures exceeded 4 million
 - 4.27m expected by end 2015
- Security threats High to Extreme
 - Armed conflict
 - Terrorism
 - Crime
- Severe Access constraints

Areas of control



4.2 Yemen

- **Prolonged conflict: No end in sight**
 - Severe impact on humanitarian situation due to conflict
 - AQAP is a potential winner of the conflict
 - ISIL seeks to take advantage of the situation to expand its footprint on the Arabian peninsula
 - Prolonged conflict expected
- **Severe access restrictions**
- **Direct/Indirect threat to WFP**



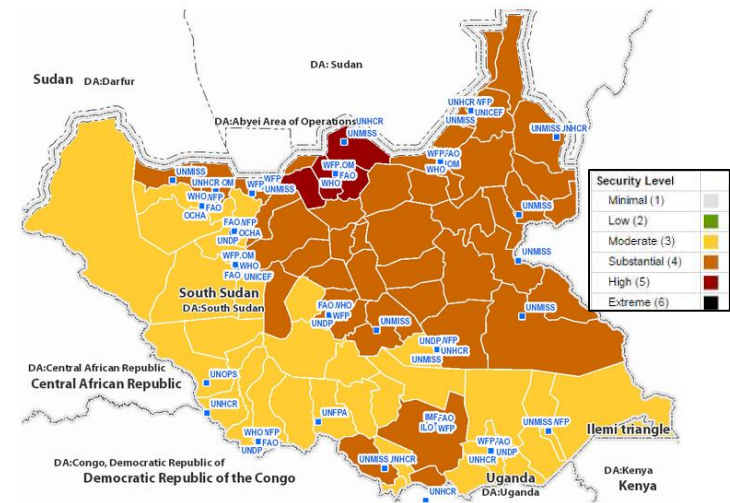
4.3 South Sudan

- **Prolonged conflict since December 2013**
 - Decreasing intensity but continued conflict
 - Attempts by IGAD to reach a peace deal since January 2014 so far unsuccessful
 - Deep-rooted ethnic tensions lead to potentially long-lasting conflict.
 - Most affected: Unity, Upper Nile and Jonglei states.
- **Other ethnic rivalries remain serious concerns**
- **Access constraints**
- **Crime**
- **Ethnic-related threats to national staff**



Security Levels - South Sudan

10/Jul/2015



Thank you!