



Regional Overview for Southern Africa
Executive Board, June 2016

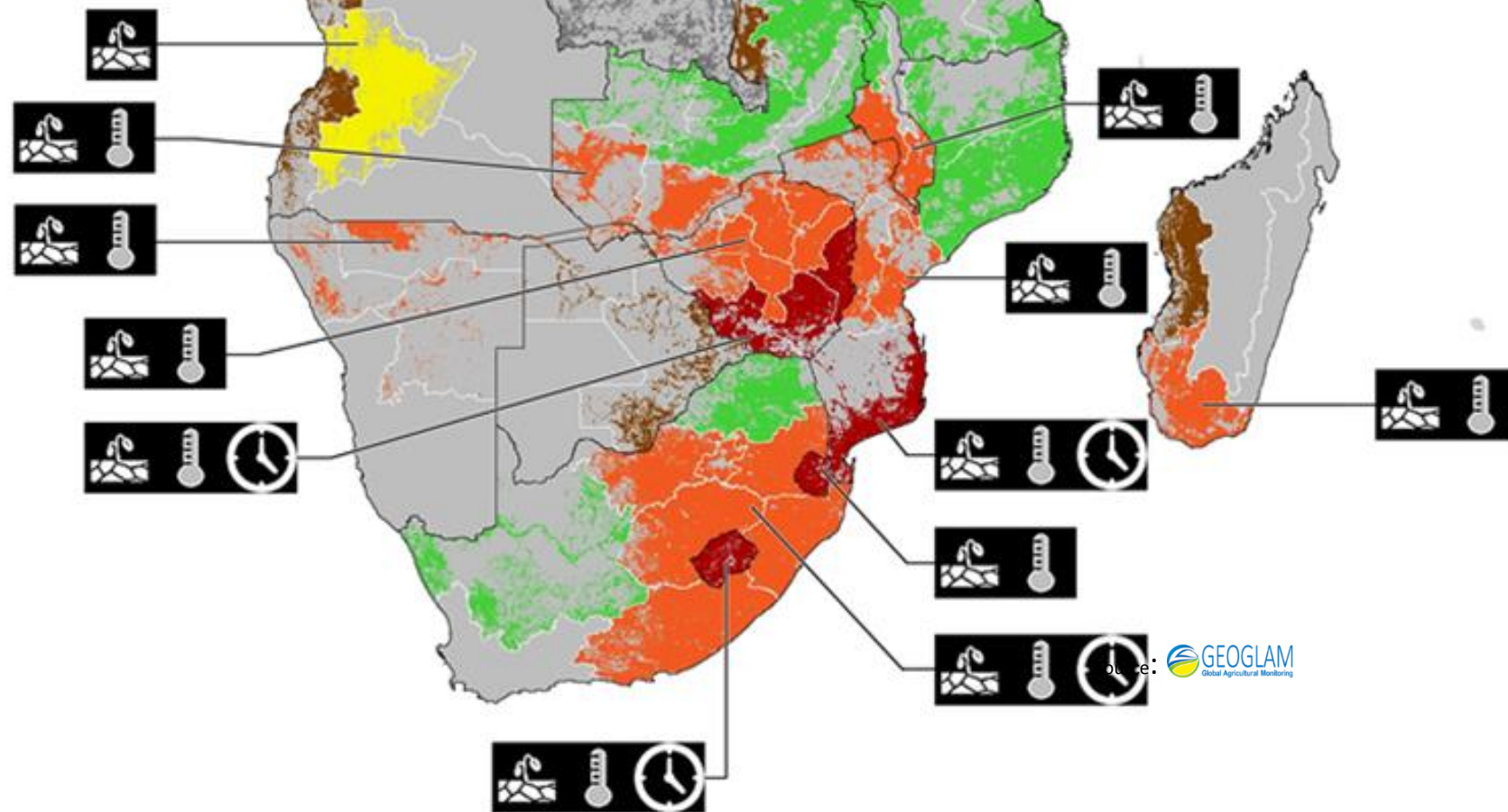
Maize Production in Southern Africa (end-April 2016)

Drivers:

-  Dry
-  Hot
-  Delayed Onset

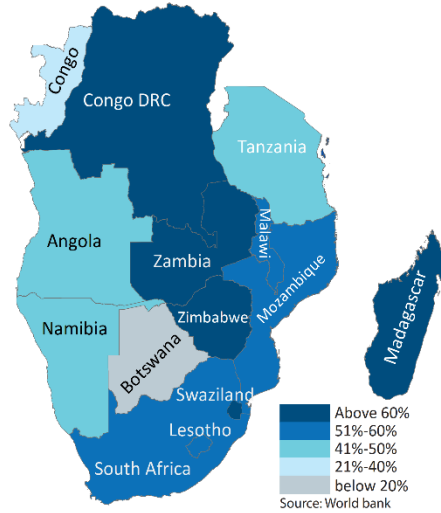
Conditions:

-  Exceptional
-  Favourable
-  Watch
-  Poor
-  Failure
-  Out-of-Season
-  No Data

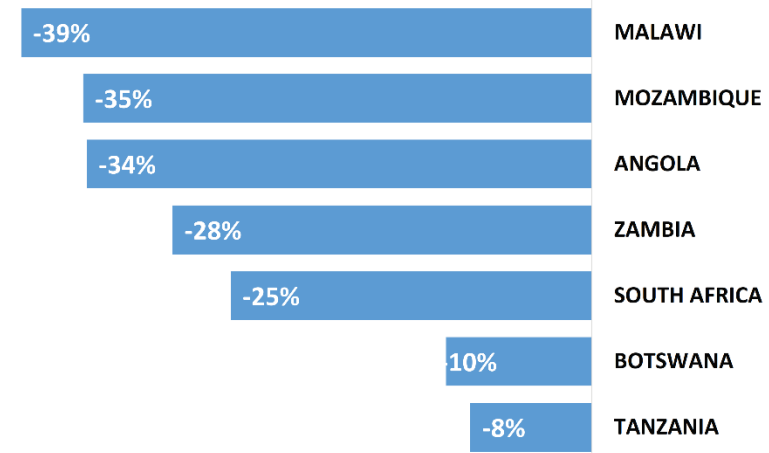


Poverty, Nutrition, HIV Prevalence and Currency Depreciation

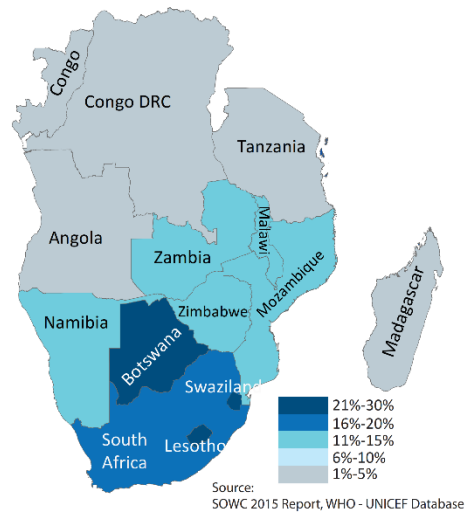
Poverty Rate



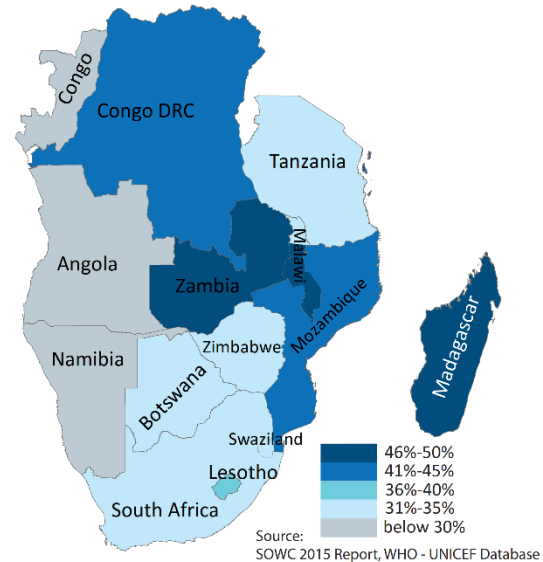
Change in Forex Rate of Currency in May 2016 compared to May-2015



HIV Prevalence -15-49 years

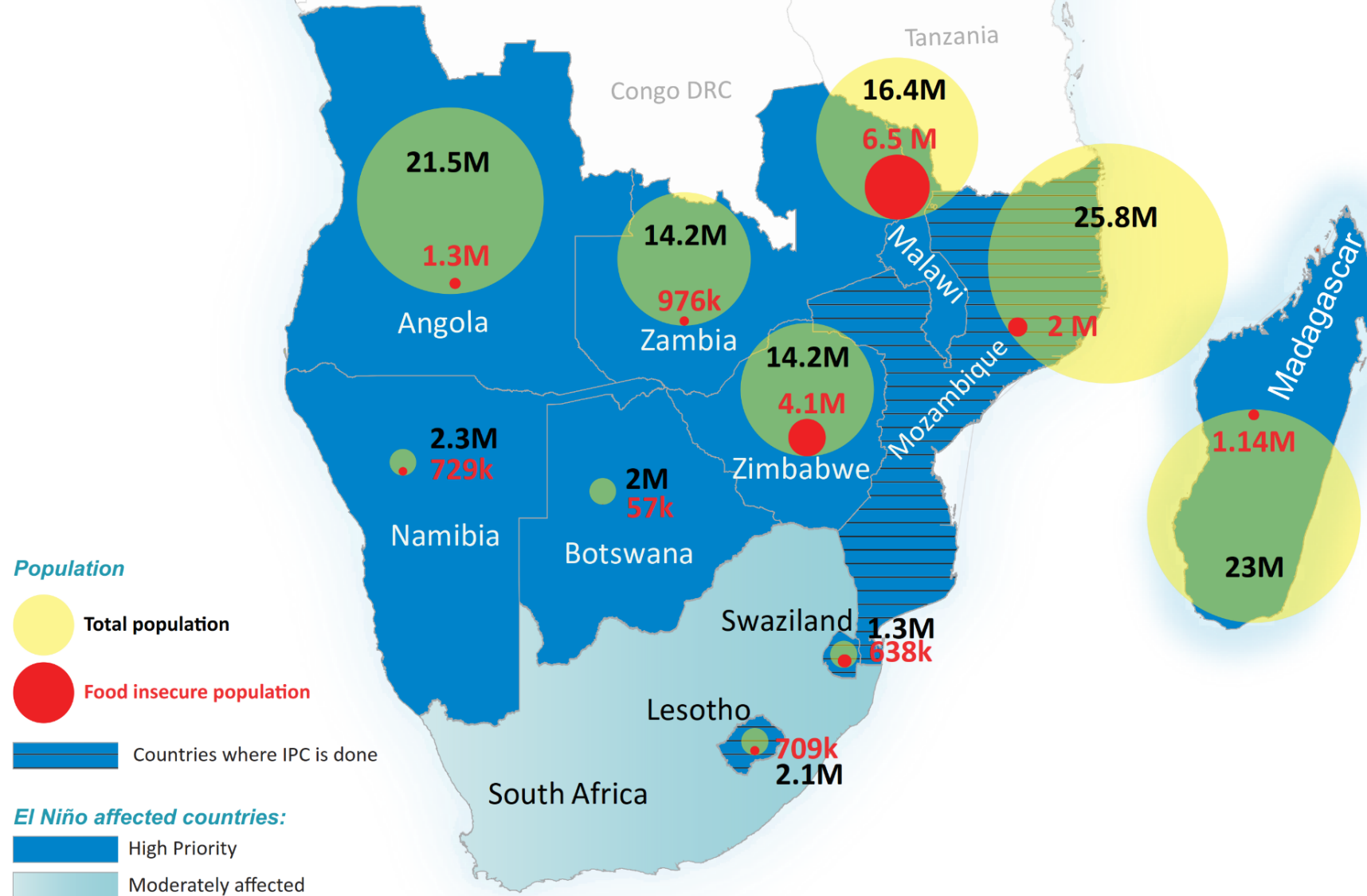


Nutritional Status - Stunting



Preliminary Results of Rural Vulnerability and Livelihood Assessments:

Numbers of food insecure people



Creation date: June, 2016

Source: SADC

Disclaimers:

The boundaries and names shown and the designations used on this map do not imply official endorsement or acceptance by the United Nations.

2016 SADC and Inter-Agency Preparedness and Response Timeline

SADC El Niño consultation (Pretoria)
(sponsored by WFP and FAO)

OCHA-led El Niño Call to Action (Geneva)

SADC RVAC dissemination (Pretoria)

SADC Appeal launch

RBA El Niño/La Niña meeting (Rome)

25-26 February

17 March

26 April

25 May

6-8 June

13 June

23 June

June (end)

1 July

6 July

19/20 July

RBA Global El Niño meeting (Rome)

SADC El Niño Response Team established (Botswana)
(support provided by WFP, OCHA, FAO and UNICEF)

WFP Activation of L3 Emergency

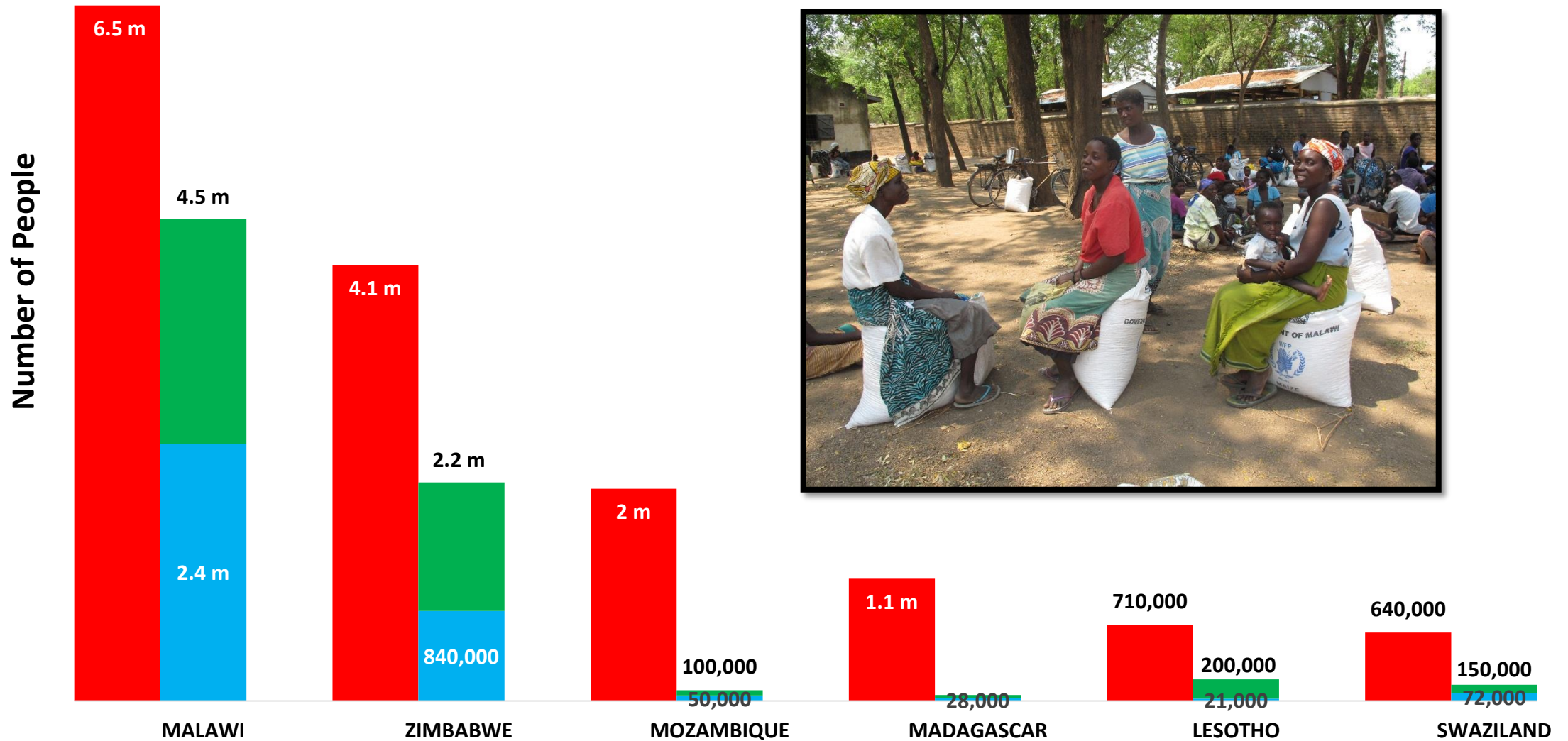
RIASCO Action Plan

WFP/FAO Planning Meeting (Johannesburg)

ECOSOC High-Level Political Forum (New York)

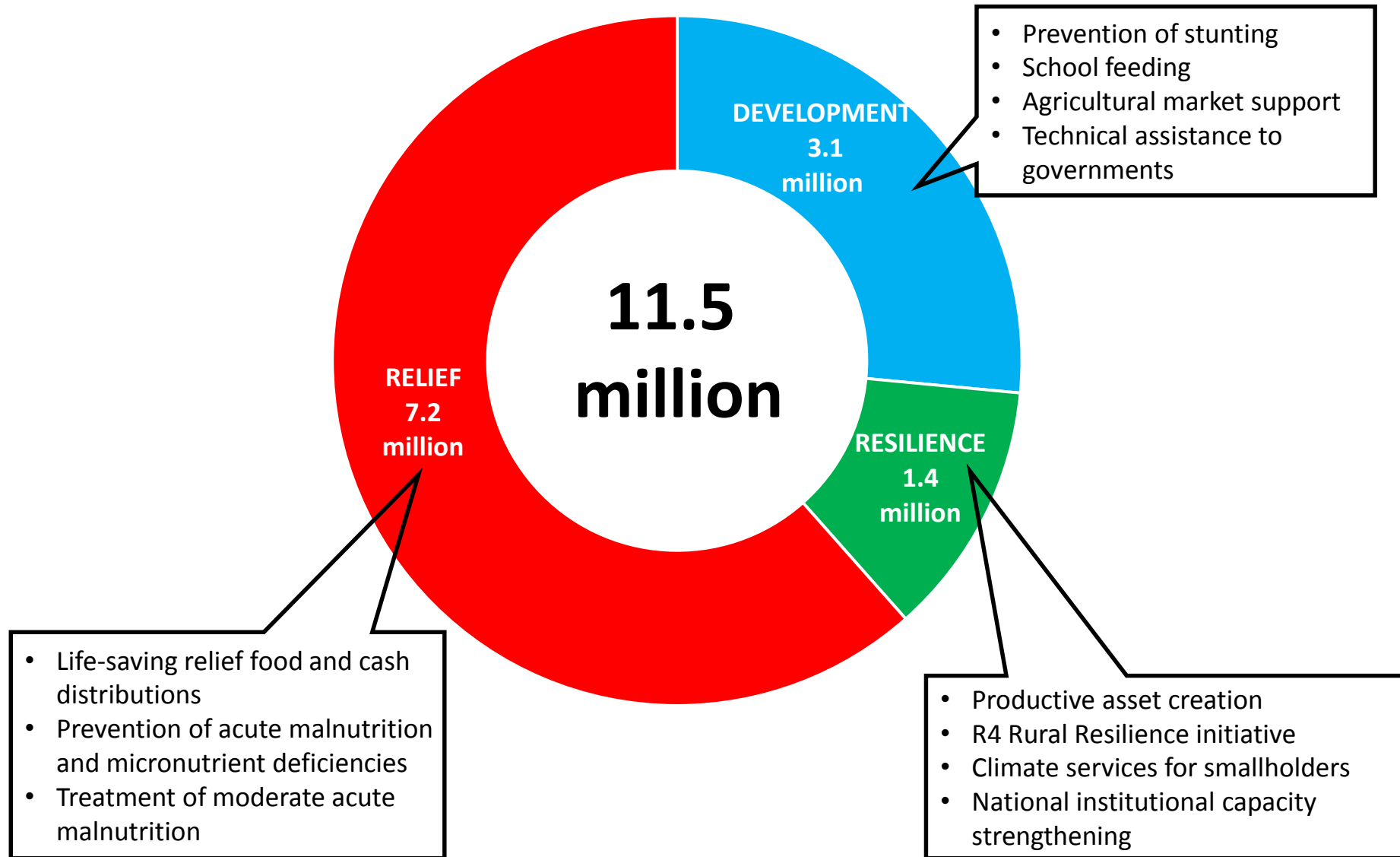
Scaling up Relief Assistance: WFP planned beneficiaries

■ Assessed Needs ■ Current Plan ■ Planned Scale-Up (by January 2017)



WFP's Southern Africa El Niño Portfolio:

Planned beneficiaries (by January 2017)



WFP's Southern Africa El Niño Portfolio: Funding Status (May 2016 – April 2017)

