



WFP Côte d'Ivoire Country Strategic Plan (July 2026-June 2029)

Executive Board Informal Consultation

13 May 2026



World Food Programme

SAVING
LIVES
CHANGING
LIVES

Country Context



Economic Growth: Côte d'Ivoire remains one of West Africa's fastest-growing economies, with **GDP growth projected at 6–7%** for 2025, driven by public/private investment, agriculture, and a growing extractive sector. But one of the lowest GDP-poverty elasticities worldwide (1% GDP growth = 0.6% poverty reduction)



Regional disparities: Poverty is much higher in rural and northern regions. The informal sector dominates, limiting social protection, and nearly **38% of the population** still lives below the poverty line.



Agriculture: dominated by smallholder farmers with limited access to markets, finance, and technology. The shift from food crops to cash crops (cocoa, cashew, rubber) has reduced local food availability and degraded soils.



Food security & Nutrition: Around **3.4 million Ivoirians are food insecure**. Over 20% of children under five suffer from chronic malnutrition and about 70% suffer from anemia.



Education: Despite significant progress in expanding access to education, major investments in teacher training and school infrastructure, **2.3 million children** remain out of school.

CSP (July 2026 - June 2029) Timeline

CSP 2026-2030 formulation

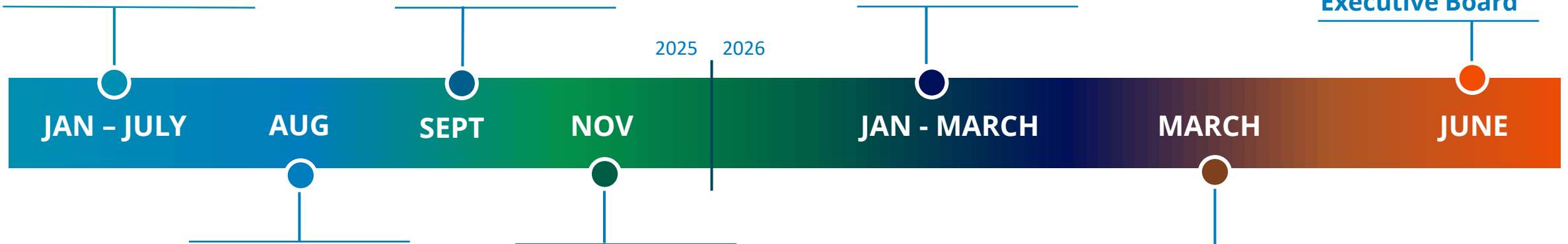
Focused (2 outcomes)
Aligned with national priorities
Calibrated with funding forecast

EB informal Consultation

CSP Adjustment (USD 52M)

Duration reduced to 3 years
Budget realigned with updated funding projections

Executive Board



Change in funding forecast

Major funding opportunities did not materialize

Withdrawal of CSP from November EB







To allow the Country Office to reassess the CSP scope, duration and financial assumptions

Government Engagement

Engagement with newly appointed government counterparts following the 2025 presidential elections

CSP (July 2026 – June 2029) Overview



| | Crisis response | Resilience | | | | |
|------------------------|--|--|---|--|--|--|
| CSP Strategic Outcomes | <p>OUTCOME 1: Food insecure and shock-affected populations in Cote d'Ivoire can meet their essential food and nutrition needs during and in the aftermath of shocks</p> | <p>OUTCOME 2: The government has strengthened capacity to deliver a sustainable school feeding programme through the promotion of a resilient food system - including improved livelihoods, better natural resource management, and the development of local value chains</p> | | | | |
| Target | <p>Beneficiaries: 114,000 Budget: \$14 M</p> | <p>Beneficiaries: 243,000 Budget: \$ 38 M</p> | | | | |
| Activities | <p>Act.1 : Emergency preparedness and response</p> | <p>Act.2 : Home-grown school feeding</p> | <p>Act. 3: Community resilience and asset creation</p> | <p>Act. 4: Smallholder farmers and value chains</p> | | |
| Goal | <p>National and local capacity strengthening and progressive handover</p> | | | | | |
| Enablers |  <p>People</p> |  <p>Partnerships</p> |  <p>Funding</p> |  <p>Evidence</p> |  <p>Innovation</p> |  <p>Advocacy</p> |
| | <p>People at the center</p> | | | | | |

THANK YOU!

