



World Food  
Programme

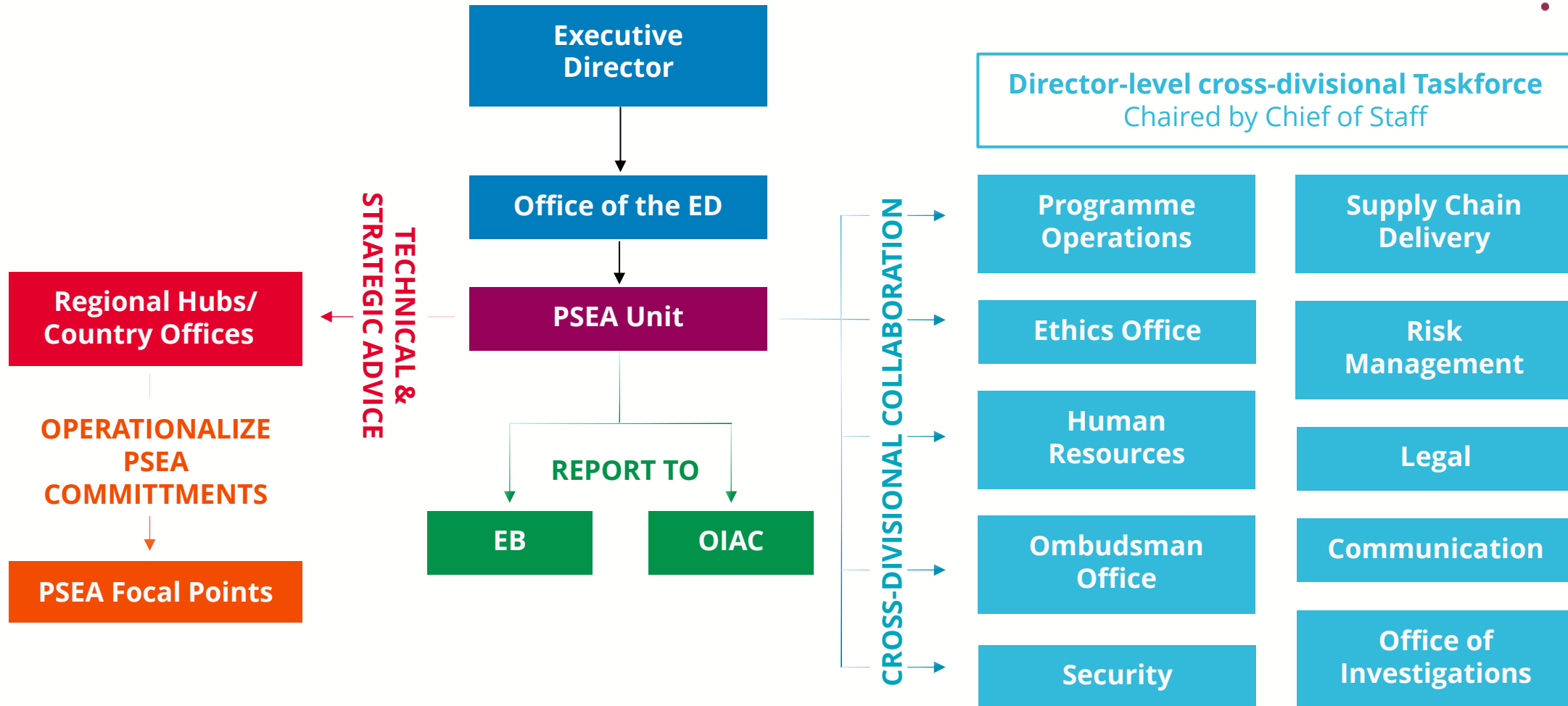
SAVING  
LIVES  
CHANGING  
LIVES

# Protection from Sexual Exploitation and Abuse

Update to the Executive Board

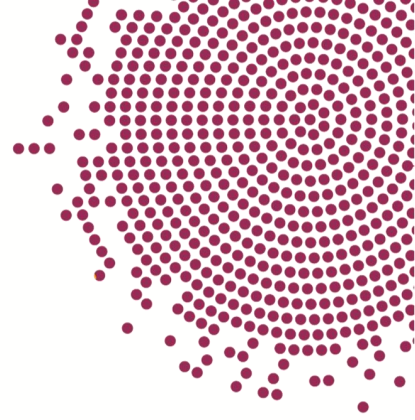
26 September 2025

# WFP PSEA Governance Framework

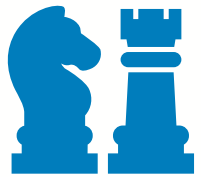




# At a Glance: How PSEA is institutionalized in WFP



## POLICY & STRATEGY



- ED Circular (2023), under revision
- Code of Conduct
- Strategic Plan and CRF (2026-2029)

## PREVENTION, RISK MNGT & OVERSIGHT



- HR vetting
- PSEA part of management performance assessment
- Corporate Risk Framework
- ED Annual Assurance Exercise

## LEADERSHIP & ORG CULTURE



- PSEA located in OED
- Director-level PSEA TF

## PROGRAMME & PARTNERSHIPS



- Country Strategic Plans (CSPs)
- Annual Country Reports (ACR)
- PSEA provisions in contracts with CPs
- Integrated Context and Risk Analysis (ICARA)

# Towards Closing the Evaluation's Recommendations

	RECOMMENDATION	# OF ACTIONS	CLOSED	OPEN	OBSOLETE
➡	1 (high priority)	8	6	1	1
	2 (high priority)	10	6	4	
➡	3 (high priority)	9	6	3	
➡	4 (medium priority)	2		1	1
	5 (medium priority)	12	8	4	
	6 (medium priority)	4		4	
	<b>TOTAL</b>	<b>45</b>	<b>26</b>	<b>17</b>	<b>2</b>

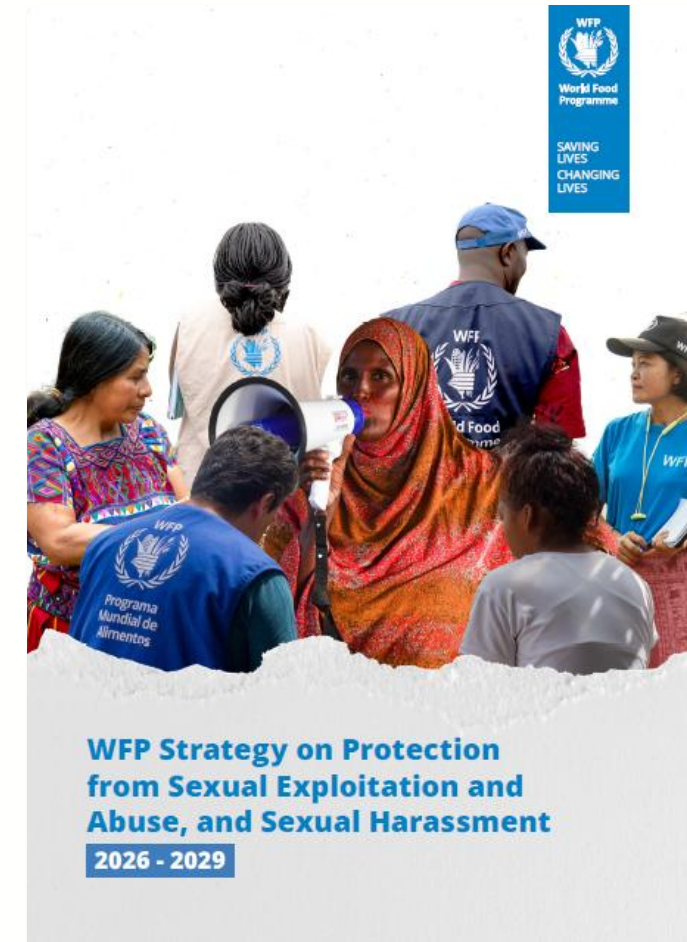
→ 60% Implementation rate

# WFP PSEAH Strategy 2026-29

This Strategy articulates WFP's vision of **a safe and accountable operational environment** in which all forms of sexual misconduct - against the people WFP assists, and other community members and those with whom it serves - are **systematically prevented, swiftly addressed through response and accountability** and never tolerated, and where **the rights, wishes, needs, safety, dignity and well-being of victims/survivors are always at the center of all actions.**

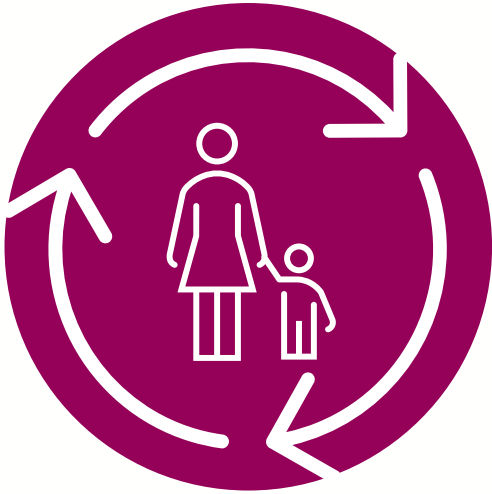
**The Strategy is designed to achieve the following objectives** (outcome level):

- 1** Enhanced prevention and mitigation of SEAH risks, particularly in high-risk contexts and operations.
- 2** Increased access to safe, trusted and victim/survivor-centered reporting channels for sexual misconduct concerns.
- 3** Improved victim/survivor-centered response, encompassing investigations, support and accountability mechanisms.
- 4** Enhanced, system-wide progress on PSEAH across the humanitarian sector driven by proactive and effective leadership.



# IASC PSEAH Championship Update

[Read detailed updates here](#)



**Operationalizing a  
victim/survivor-  
centered approach**



**Promoting  
organizational culture  
change through  
leadership and  
partnerships**



**Supporting continued  
capacity strengthening  
across the sector**





GLOBAL ADVISORY GROUP



IMPLEMENTING PARTNER  
PROTOCOL WORKING GROUP



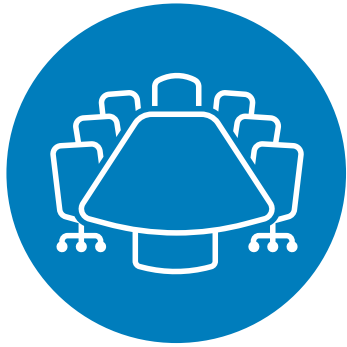
CLUSTER WORKSTREAM



PSEA AT THE FRONTLINE  
PHASE 2



# Other Key Areas of Work



**Leadership  
Engagement**



**Internal  
Outreach**



**Policy Work**



**Field Support**



# Key Milestones Before End of 2025



**Completion and Delivery of Championship Products**



**Handover of IASC PSEAH Championship**



**Accelerating the Closure of Priority Actions in the Management Response**



**Dedicated PSEAH Leadership Session**



THANK YOU