



World Food  
Programme

SAVING  
LIVES  
CHANGING  
LIVES

# WFP Sierra Leone Country Strategic Plan 2026 -2030

Executive Board Informal Consultations

23 September 2025

# Country Context



**Chronic Food Insecurity: 77%** of the population food insecure, with 1.4 million in severe need



**Agriculture:** dominated by smallholder farmers with limited access to markets, finance, and technology.



**Nutrition: 26%** of children under 5 suffer from stunting



**Economic Instability: High Inflation** (up to 56% in 2023)



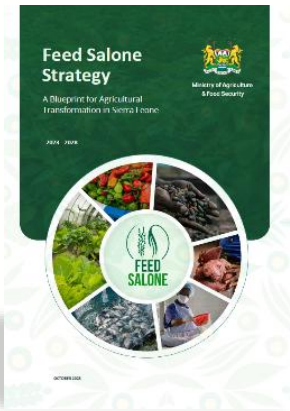
**Fragile ecosystems & environmental shocks:** Sierra Leone ranks among the most vulnerable countries in the world to environmental hazards.



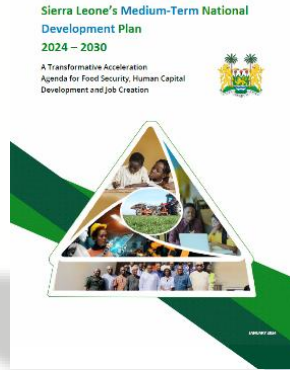
**Demographics:** Young, fast-growing population with 80% of the population under 35, facing high rural poverty and inequalities



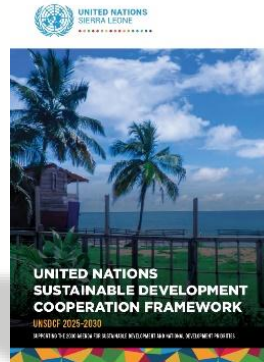
# Alignment to Government National Plans and the UNSDCF



**FEED SALONE  
2023-2028**



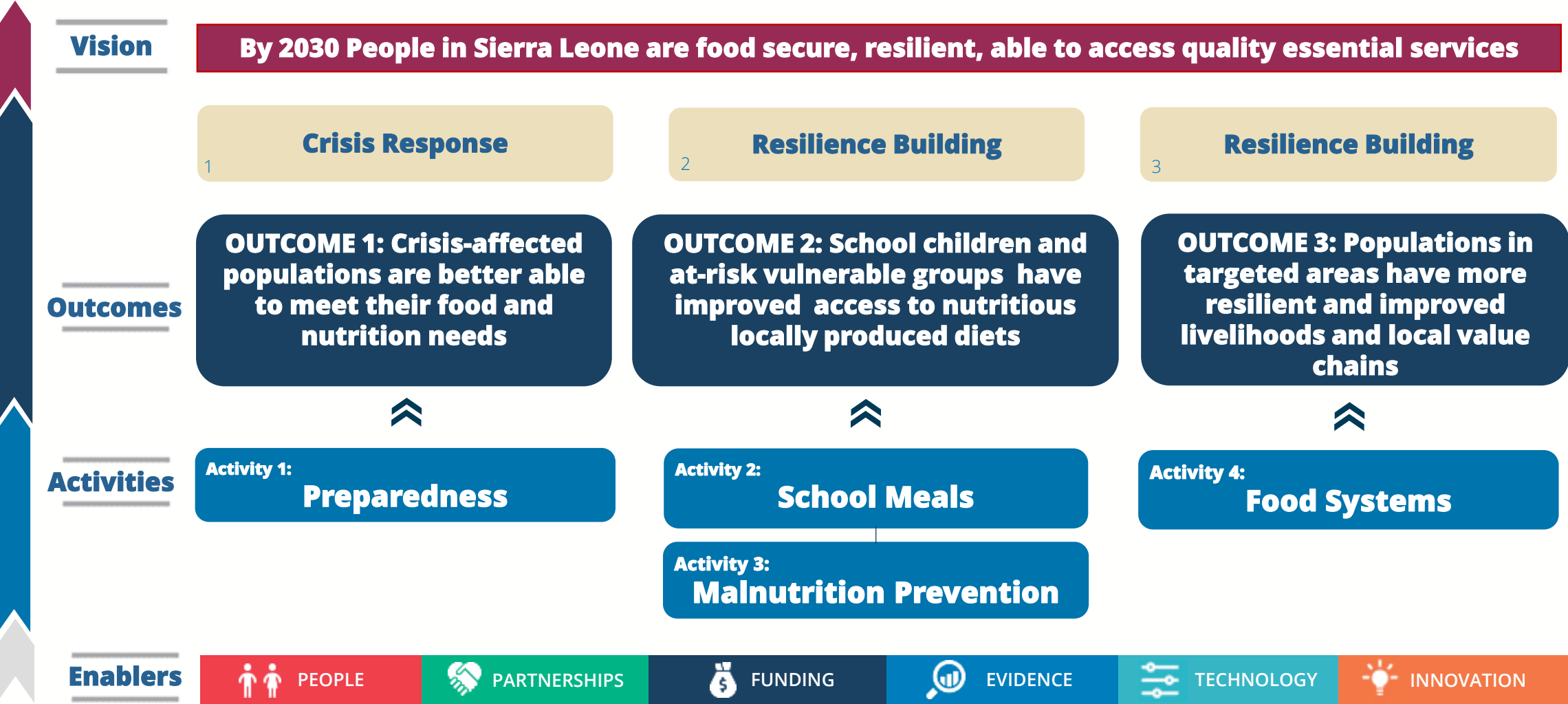
**Medium Term  
National  
Development  
Plan 2024-2030  
&  
Big Five Game  
Changers**



**UNSDCF 2025-  
2030**



# WFP New Country Strategic Plan 2026-2030



# Strategic orientation



**Localization** - Community-driven delivery and strong partnerships with local actors.



**Transition & Sustainability** - Building local capacity for gradual handover to government and partners.



**Monitoring & Accountability** - Robust systems for generating evidence, tracking, feedback, and transparent reporting.





# TENKI

