



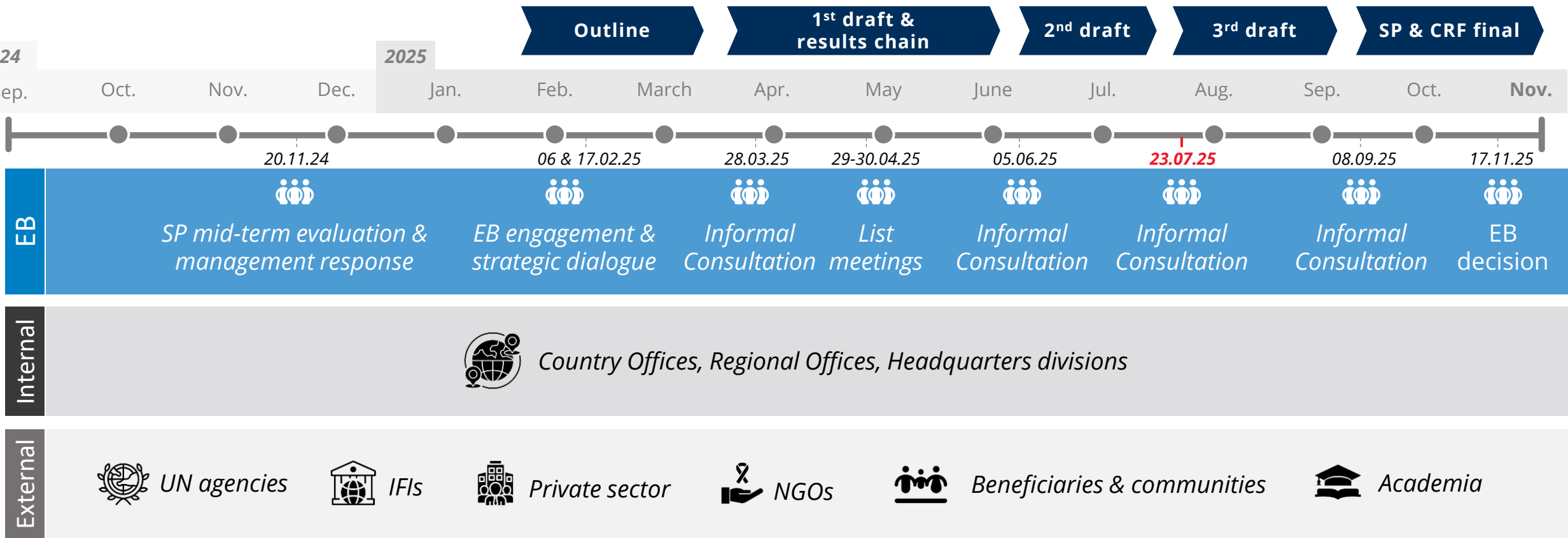
World Food  
Programme

SAVING  
LIVES  
CHANGING  
LIVES

# Informal consultation on the WFP strategic plan and corporate results framework 2026-2029

July 23<sup>rd</sup>, 2025

# Strategic plan and CRF development timeline



OEV

Mid-term evaluation of WFP's SP (2022-2025)

EPRI

Stakeholder mapping & WFP's comp. advantage

APP

Context analysis

BCG

Strategic foresight

IDS

Political economy of hunger



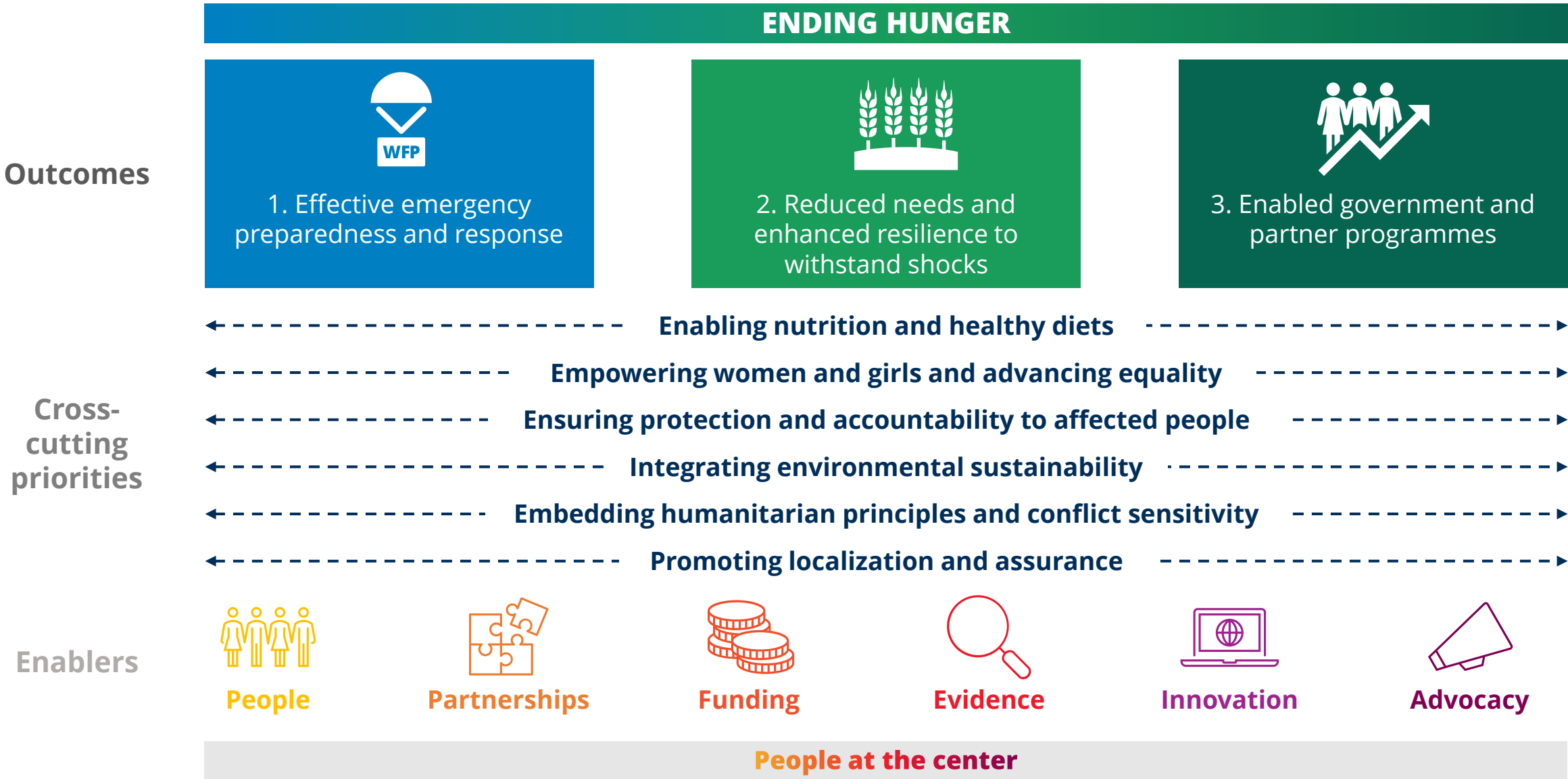


## EB Informal Consultation - 23 July

### **1 Strategic Plan 2026-2029** Draft 2

### **2 Corporate Results Framework (CRF) 2026-2029** Draft 1

# Strategic plan framework



# Strategic focus

## Outcomes



1. Effective emergency preparedness and response

Deliver **high quality** assistance to the **right people, at the right time and in the right way**

Invest in **emergency preparedness, anticipatory action, and early action** to respond faster, more effectively and more cost-efficiently

## Strategic focus

## ENDING HUNGER



2. Reduced needs and enhanced resilience to withstand shocks

**Reduce humanitarian needs** for people and communities that face protracted and recurring acute food insecurity

... by investing in **integrated, scalable and sustainable solutions**

... focusing on **WFP's comparative advantage**, and leveraging **partners' expertise**



3. Enabled government and partner programmes

**Support government programmes and systems** to better:

- Reach the **most vulnerable** people
- Assist people to **manage risks**
- Address **food insecurity** and malnutrition

Strengthen the work of **partners** through the provision of common services

# Key changes compared to the first draft

## Strategic Plan - Draft 2

The global context 1

The global food assistance landscape 2

WFP in a changing world 3

WFP's position and comparative advantages 4

Strategic outcomes (SO) 5

Cross-cutting priorities (CCP) 6

Enablers 7

## New content

**Context:** Added Box 1 synthesizing the **strategic orientation** of this plan

**SO 1:** Added Box 2 emphasizing WFP's support for **displaced populations**

## Sections with most changes

**Context:** Starts with WFP's **vision**, relentlessly committed to ending hunger

**SO 2:** Clarified scope for **resilience**, reinforced complementarity with partners

**SO 3:** Better articulates support to national **safety nets**

**CCP 3:** Expanded text on **protection**

**CCP 6:** Aligned with new policy on **localization**

## Changes to come

**Landscape:** Updates to **humanitarian reset and UN80**





## EB Informal Consultation - 23 July

### **1 Strategic Plan 2026-2029** Draft 2

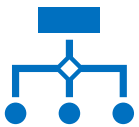
### **2 Corporate Results Framework (CRF) 2026-2029** Draft 1

# 2026-2029 CRF Outline



## Introduction

- Development of the CRF
- Guiding principles and enhancements



## Section I – CRF results structure

- Overview of the CRF results structure from strategic outcomes to standard outputs, cross-cutting priorities and activities.



## Section II – Corporate Programme Indicators

- Brief narrative with the full of outcome, output and cross-cutting indicators set (Annex I) intended for corporate global performance monitoring.



## Section III – Country Programme Indicators

- Outlines the types of programme indicators available to country offices for monitoring purposes and explains the CRF approach to selecting indicators at the country level.



## Section IV – Management Results and Key Performance Indicators

- Brief narrative with the full set of management results and corresponding KPIs (Annex II).

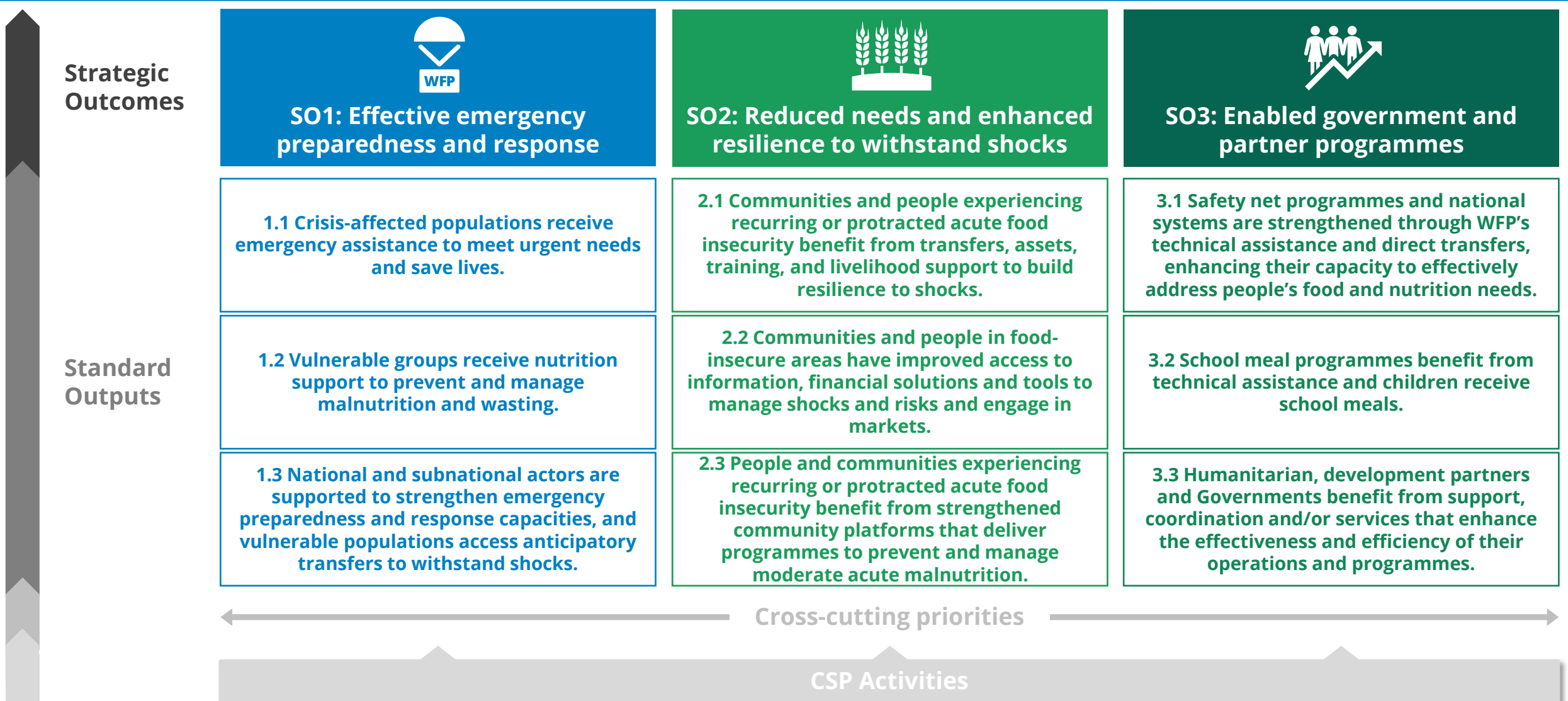




# Key changes from current CRF


|  |                                | 2022-25 CRF                           | 2026-29 CRF (Draft 1)                                 |
|--|--------------------------------|---------------------------------------|---|
|  | CORPORATE MONITORING FRAMEWORK | SINGLE CORPORATE MONITORING FRAMEWORK | TAILORED COUNTRY AND CORPORATE MEASUREMENT FRAMEWORKS |
|  | CRF RESULT STRUCTURE           | 5 STRATEGIC OUTCOMES                  | 3 STRATEGIC OUTCOMES                                  |
|  |                                | 12 STANDARD OUTPUTS                   | 9 STANDARD OUTPUTS                                    |
|  |                                | 4 CROSS CUTTING PRIORITIES            | 6 CROSS CUTTING PRIORITIES                            |
|  | PROGRAMME INDICATORS           | 191                                   | 64  |
|  | MANAGEMENT RESULTS             | 7                                     | 4   |
|  | MANAGEMENT RESULTS KPIs        | 60                                    | 46  |

# Section I – CRF results structure



# Section II – Corporate Programme Indicators (64)


**20 Outcome Indicators**  
(previously 61)



**Strategic Outcome 1**  
6 Outcome Indicators



**Strategic Outcome 2**  
5 Outcome Indicators



**Strategic Outcome 3**  
9 Outcome Indicators

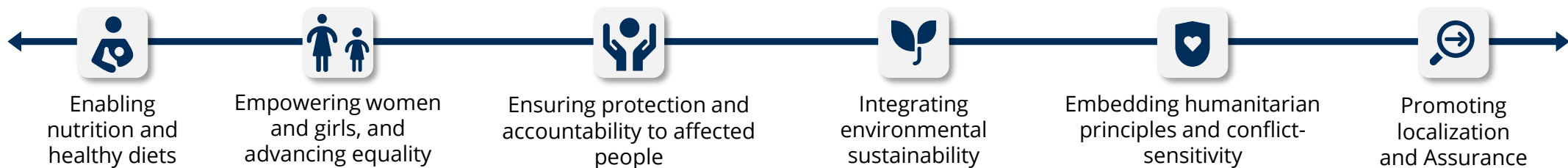
**30 Output Indicators**  
(previously 110)

**7 Output Indicators**

**9 Output Indicators**

**14 Output Indicators**

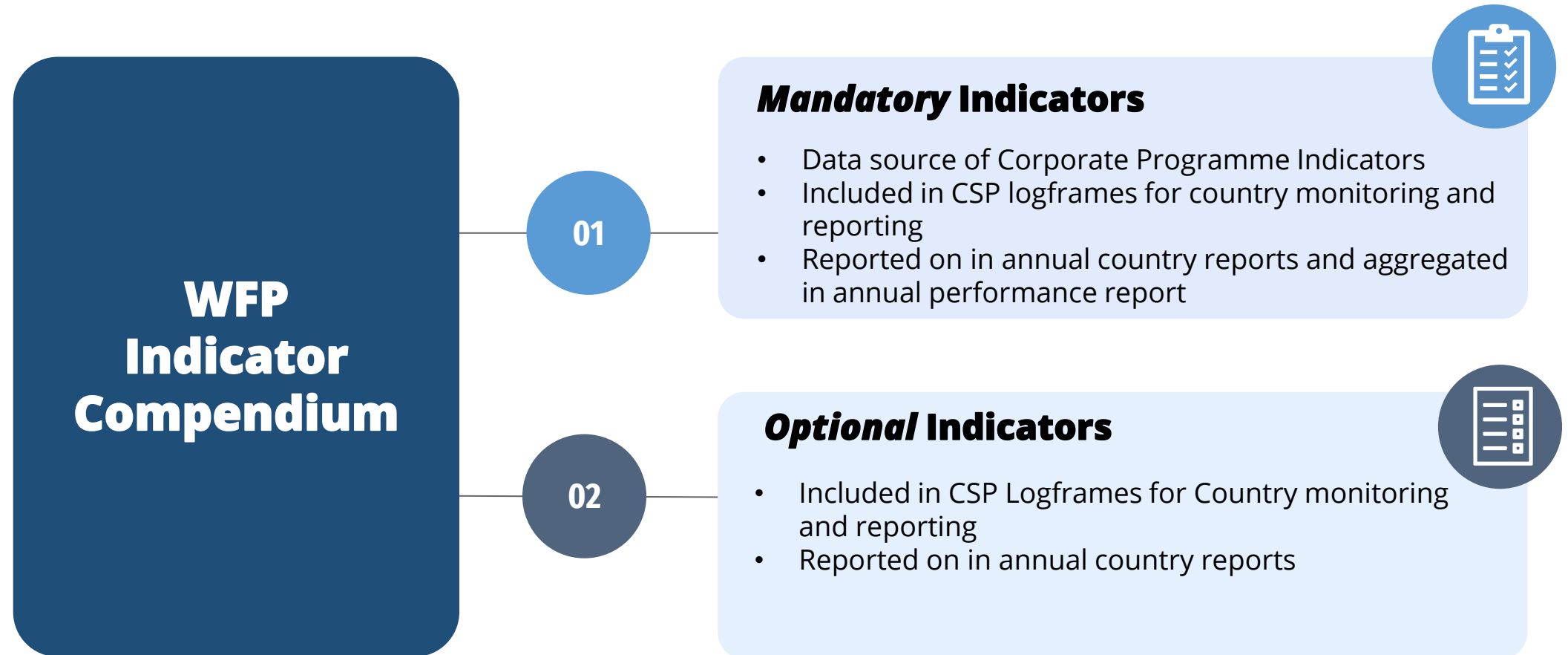
**14 Cross-cutting Indicators**  
(previously 21)



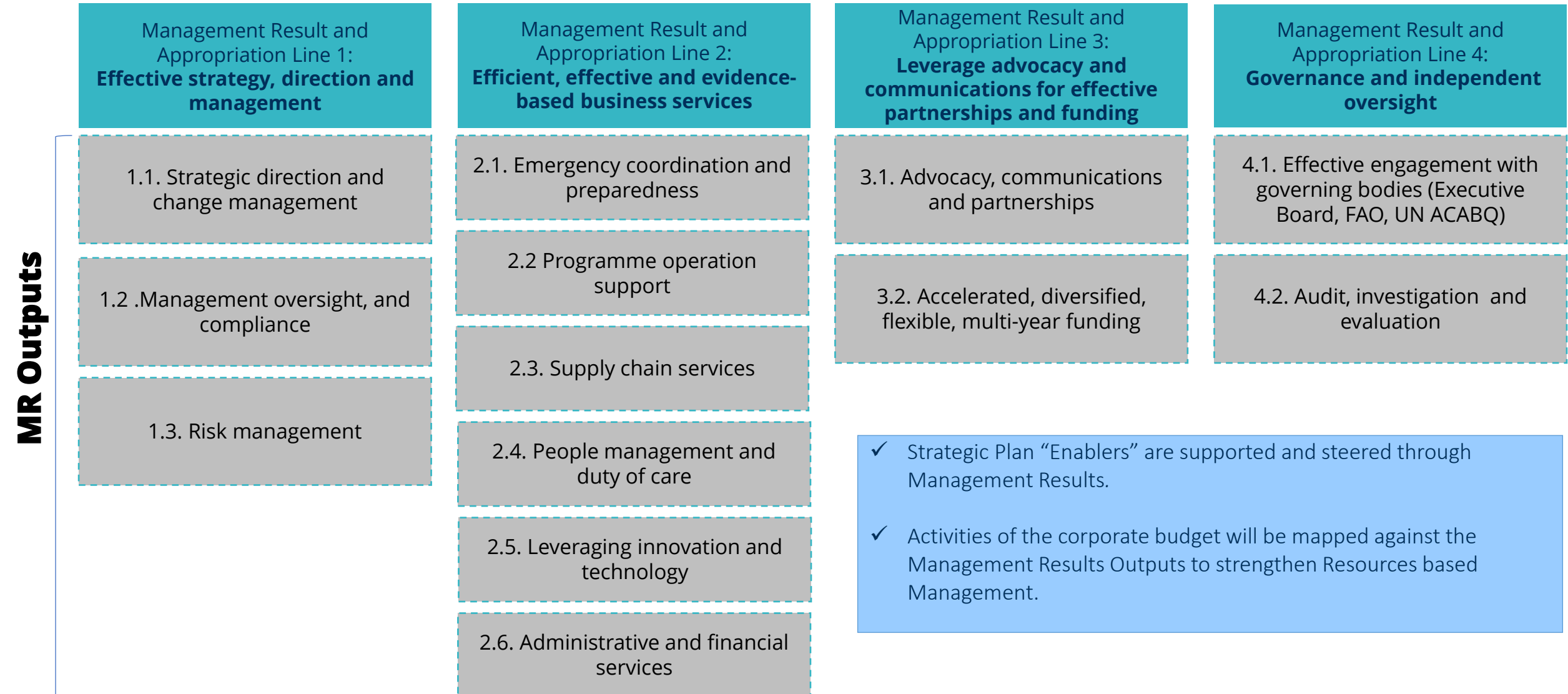


# Section III – Country Programme Indicators

(outcome, output, cross-cutting)



# Section IV – Management results and associated outputs





**Thank you**



**ANNEX**

# Section III – Linkages between Country and Corporate Programme Indicators

## Indicators' Examples

### Mandatory Country Programme Indicators (Section III)

**SO1: Effective emergency preparedness and response**

*Food Consumption Score*

### Corporate Programme Indicators (Section II)

**SO1: Effective emergency preparedness and response**

*Proportion of countries where people provided with emergency assistance by WFP improve/maintain their food consumption*

**CC Priority: Ensuring protection and accountability to affected people**

*Percentage of beneficiaries reporting no safety concerns experienced as a result of their engagement in WFP programmes*

*Percentage of beneficiaries who report they experienced no barriers to accessing food and nutrition assistance*

*Percentage of beneficiaries who report being treated with respect as a result of their engagement in programmes*

**CC Priority: Ensuring protection and accountability to affected people**

*Percentage of WFP country offices where at least 90% of people assisted report that WFP assistance is delivered in a safe, accessible, and dignified manner, including free from Sexual Exploitation and Abuse (SEA)*