



# Eastern Africa, Regional Overview

**Laurent Bukera, Regional Director for Eastern Africa (RBN)**

Second Regular Session of the WFP Executive Board



World Food  
Programme

SAVING  
LIVES  
CHANGING  
LIVES

2024 November

# Eastern Africa Overview



Nearly **63M** are acutely food insecure - up from 61M in December 2023. Over **15M** pregnant/breastfeeding women and children are acutely malnourished.



4 drivers of food insecurity - **conflict, climate shocks, socio-economic shocks,** and **public health emergencies.**



**26.5M** people displaced in the region- up from over **18M** in December 2022.

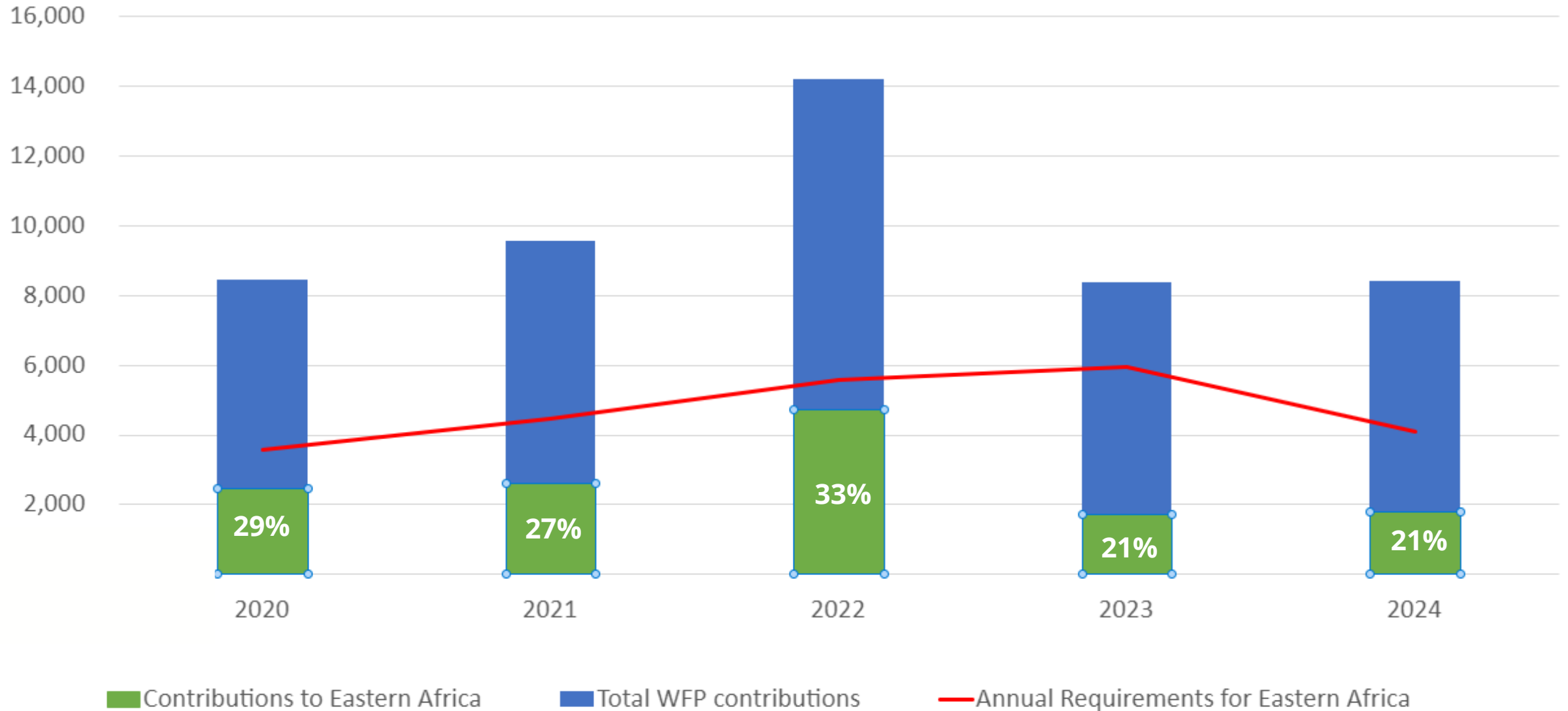


Home to **two** of the **largest five food crises** globally - **Sudan** and **Ethiopia.**



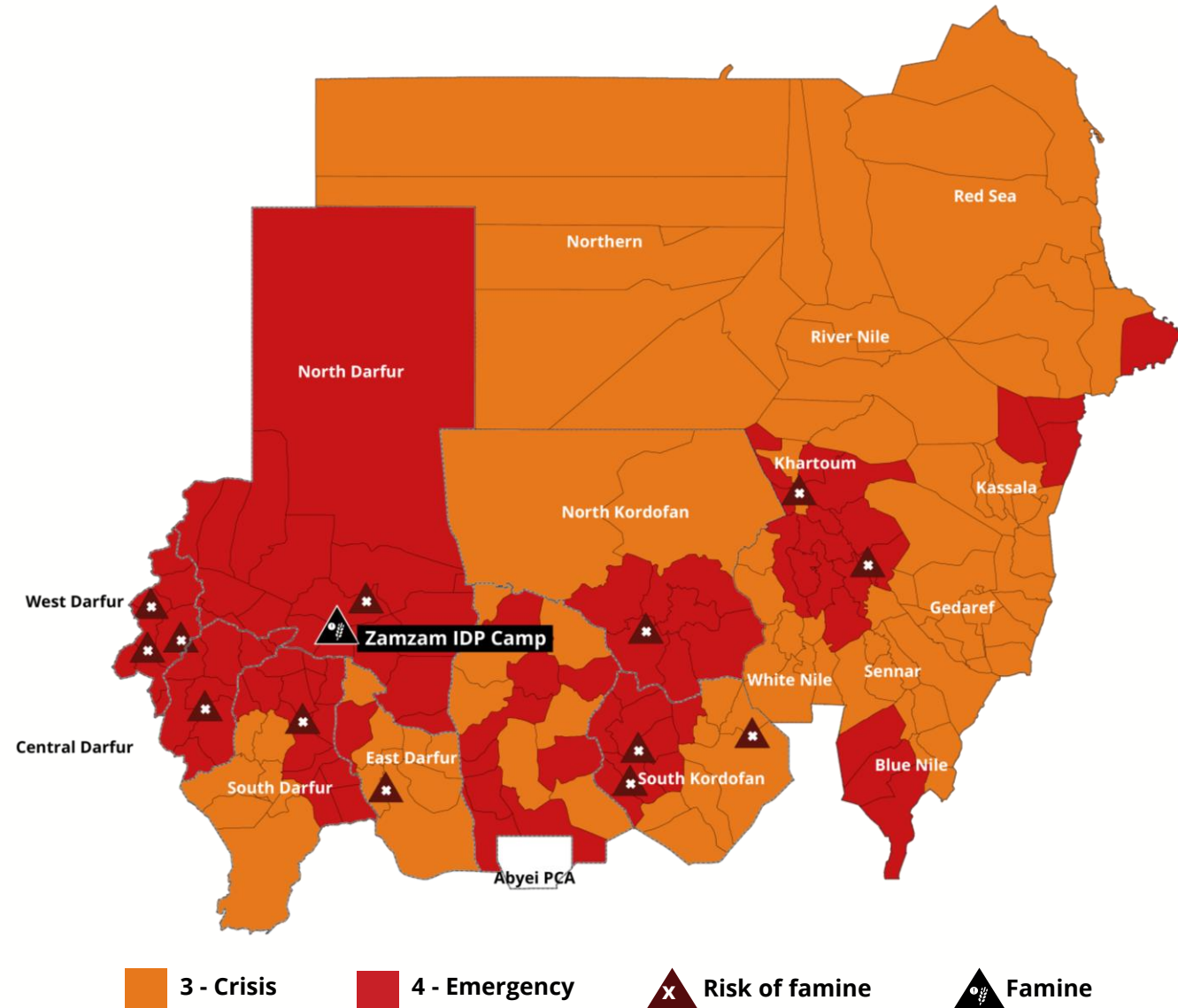
**WFP is targeting 41 million people in 2024; but only 33 million will receive assistance.**

# Funding Trends and Needs: in USD millions



# Sudan

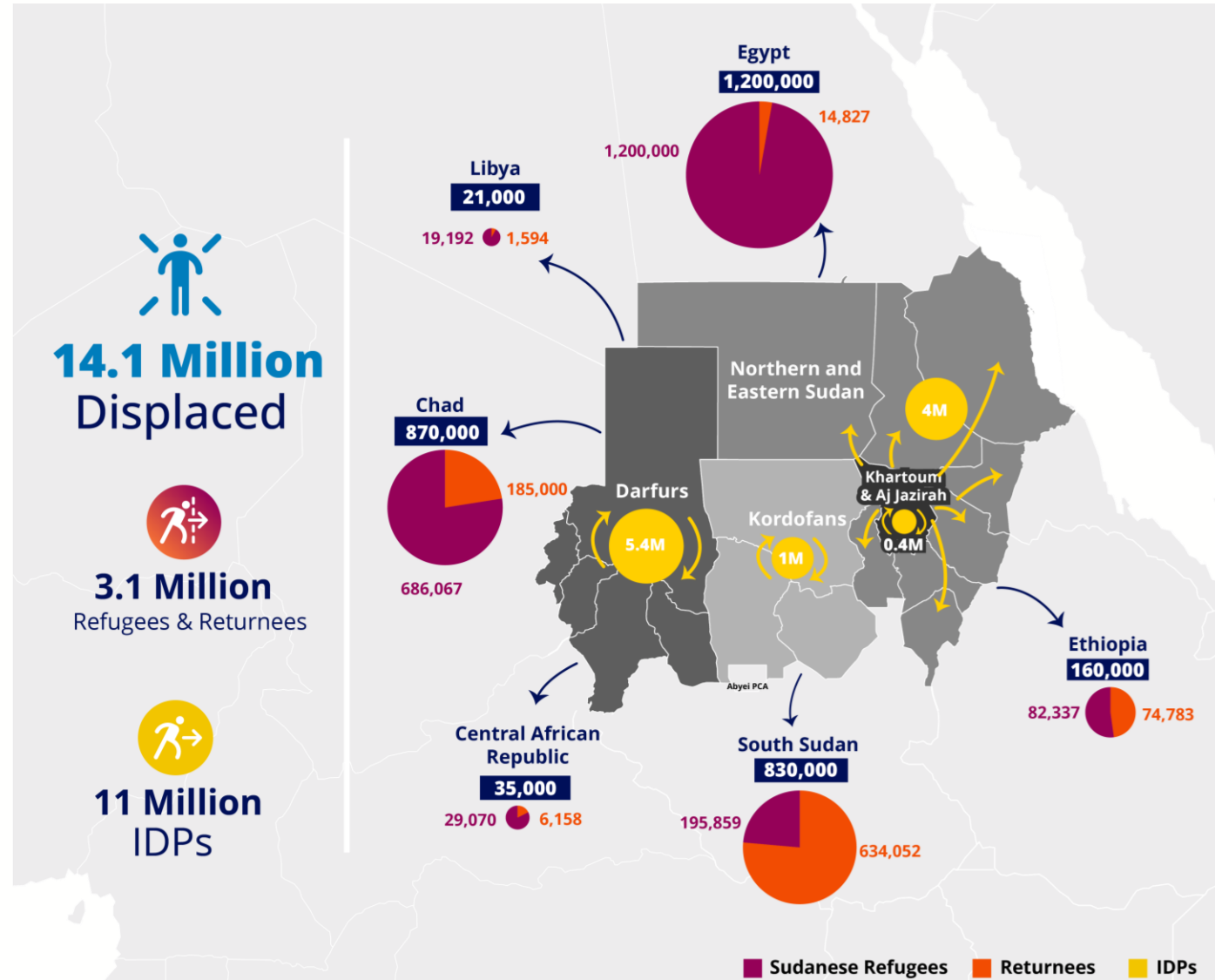
- **World's largest hunger crisis.** Over **25 million** people acutely hungry (IPC 3+); nearly **1.5 million** people either in famine or at risk of famine.
- In 2024, WFP reached nearly **7 million** individuals - **1 million** assisted in Risk of Famine Areas. WFP plans to support **8.4 million** by end of 2025.
- But: **Ongoing conflict, historic flooding** and **disrupted livelihoods** compound food insecurity.
- **WFP support to smallholder farmers continues:** 58,000MT purchased locally in 2024. Overall, wheat production increased three-fold. Critical to **preserve development gains** as building blocks for the future.
- The world needs to treat Sudan crisis with the urgency it demands - **international attention, diplomatic efforts** and **funding** must increase.



**USD 509 million needed to support those most food insecure in the next 6 months (Nov 2024 - April 2025)**

# Sudan Regional Crisis

- **World's largest displacement crisis** - **14.1 million** are displaced. Over **11 million** forced from their homes since April 2023 alone.
- More than half of the displaced are **women**, and over a quarter are **children** under the age of 5.
- Since the onset, more than **3 million** people have fled to neighbouring countries with **limited absorption capacity**.
- The conflict **disrupted regional trade** and **worsened inflation** in Sudan and neighbouring countries.
- Protracted conflict further undermines **security and stability** in an already volatile regional context.
- Over **36M** people acutely food insecure (IPC Phase 3+) across Sudan, South Sudan and Chad.



**USD 775 million needed for the Sudan Regional Response across Sudan and neighbouring countries.**

# Ethiopia

- Nearly **16 million** people in need of life-saving relief food assistance.
- WFP deeply concerned about **growing insecurity** in parts of Ethiopia- humanitarian staff and operations also affected.
- WFP only reached **61 percent** of the most vulnerable planned for emergency distribution in October.
- Unhindered **humanitarian access** and **funding** critical to addressing growing needs.
- Robust **anticipatory actions** and humanitarian assistance needed at **scale** to prevent the potential impacts of **La Niña**.



**USD 378 million needed to support those most food insecure in the next 6 months (Nov 2024 - April 2025)**

# Somalia

- Between October to December, **4.4 million** people (23 percent of the population) predicted to face crisis or worse food insecurity (IPC Phase 3 and above).
- **Funding** critical to addressing growing needs - WFP forced to significantly scale back assistance.
- WFP working alongside the Government of Somalia in addressing immediate needs and prioritising **long-term resilience** against climate change.
- WFP continues to be a driving force and a convenor in addressing **Post Delivery Aid Diversion** (PDAD).
- WFP preparing for changes brought by the **UNSOM** and **ATMIS** transition to **UNTMIS** and **AUSSOM**.



**USD 318 million needed to support those most food insecure in the next 6 months (Nov 2024 - April 2025)**

# Flooding and Displacement

- Eastern Africa is one of the epicentres of the climate emergency - **devastating floods** wreaking havoc across the East Africa region.
- Nearly **2.5M** people impacted by flooding since June- including in South Sudan, Sudan, Ethiopia, Uganda- heavy June to September rains and increased waterflow from the Nile River catchments
- Over **500,000** people displaced in **South Sudan** and **Sudan**.
- WFP **responding across the region** - through anticipatory action, food and nutrition assistance and critical logistics services.
- Investments in **long-term solutions** essential for communities to withstand future climate shocks.





# Together, Better and Further

## NGOs



## Regional Bodies



## UN Partners



# Evaluation for Impact

- WFP is increasingly focused on using evaluations to inform our **strategic direction** and improve **programme quality**, while meeting **donor requirements**.
- Commissioned **39 country-specific** evaluations and thematic evaluation summaries since 2019, complemented by additional centralized evaluations
- Thematic Evaluation Highlights:
  - **Emergency Response** - generally positive performance with challenges and shortcomings in meeting scale of need, leaving no one behind
  - **Resilience** - increasingly sophisticated designs but implementation falling short of aspirations
  - **Food Systems Transformation** - evidence of positive impacts, but limited scale
  - **Gender** - a need to go beyond targeting of women and more systematically integrate gender to realize transformation
- Country Offices and Regional Bureau actively learning and adapting strategies and programming to **strengthen impact**.



# Enhanced Assurance Across the Priority Areas

- **IDM:** Digitalization of processes to allow beneficiary authentication as well as improved management of in-kind assistance through the rollout of SCOPE-IK.
- **Monitoring & CFM:** expanded use of digital CRM solutions and multi-layered monitoring approaches to promote timely and effective tracking and response to issues.
- **CP Management:** Streamlined processes and reporting through adoption of PartnerConnect as well as capacity strengthening trainings and revised onboarding guidance.
- **Supply Chain:** Improved oversight of commodity management with the adoption of GPS tracking and last mile solution.
- **Targeting-** Significant improvements undertaken across the region, including Somalia, South Sudan, and Ethiopia leveraging data-driven and community-based approaches.





**THANK  
YOU**