



World Food  
Programme

# WFP in Latin America & the Caribbean

Lola Castro, Regional Director  
November 2024





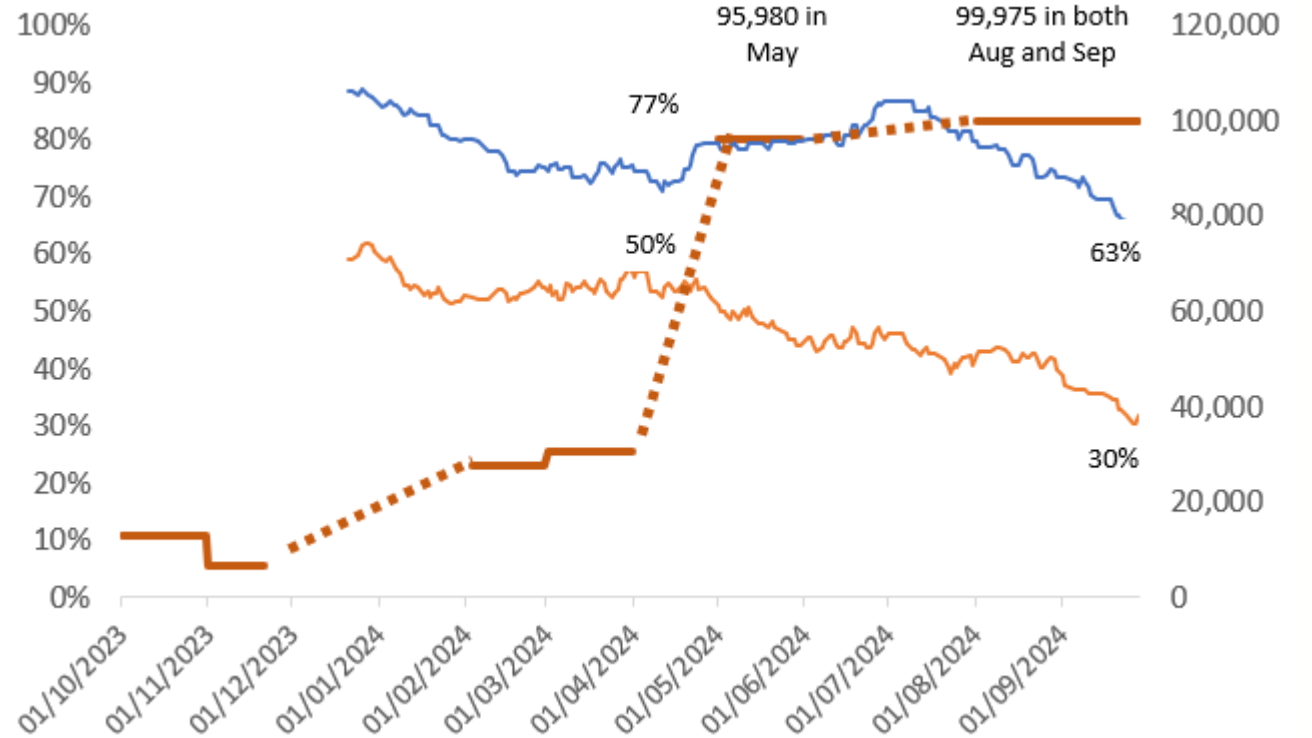
# Haiti

Food insecurity



## Impact of food distributions in May, August and September 2024

Impact of large-scale food distributions (red)  
Percentage of people with insufficient (blue) and poor (orange) food consumption



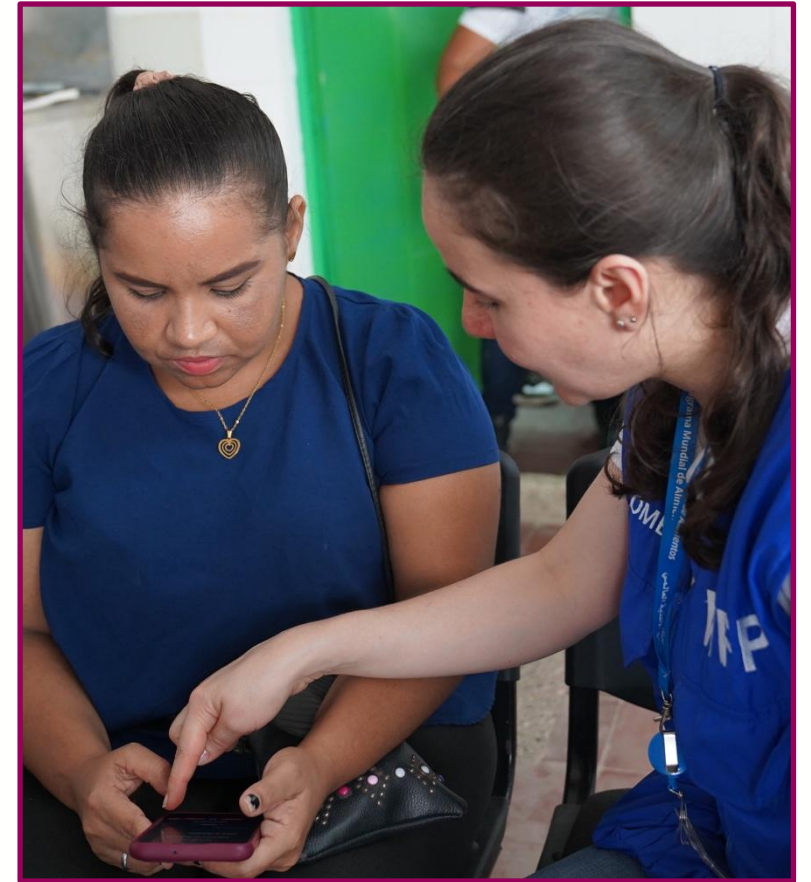
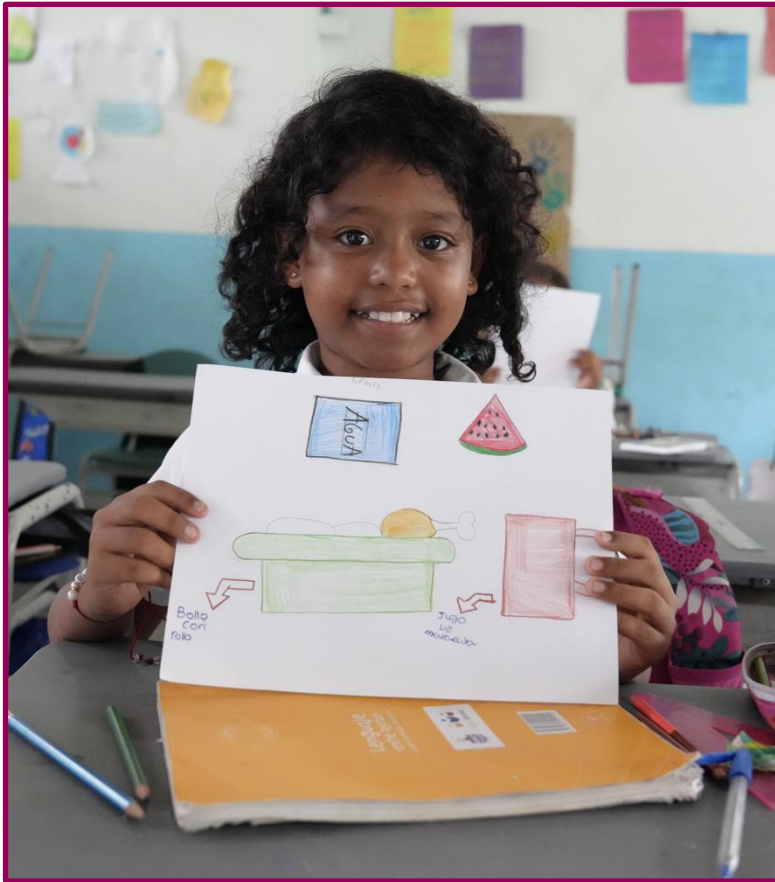
# Colombia



**305%** increase in internally displaced persons in 2024 (OCHA)



**25%** of the population in moderate or severe food insecurity



Floods and fires

# Amazonia



● Fires



# Caribbean



# Preparedness



In 2023, advanced financing for WFP procurement **could have saved up to \$6.4 M** enabling support for 200,000 additional beneficiaries

## SAVINGS

**\$ 6.4M**

\$ 4.7M

\$ 1M

\$ 630K



## BENEFICIARIES

**200K**

172K

28K

1K



**HONDURAS**

**VENEZUELA**

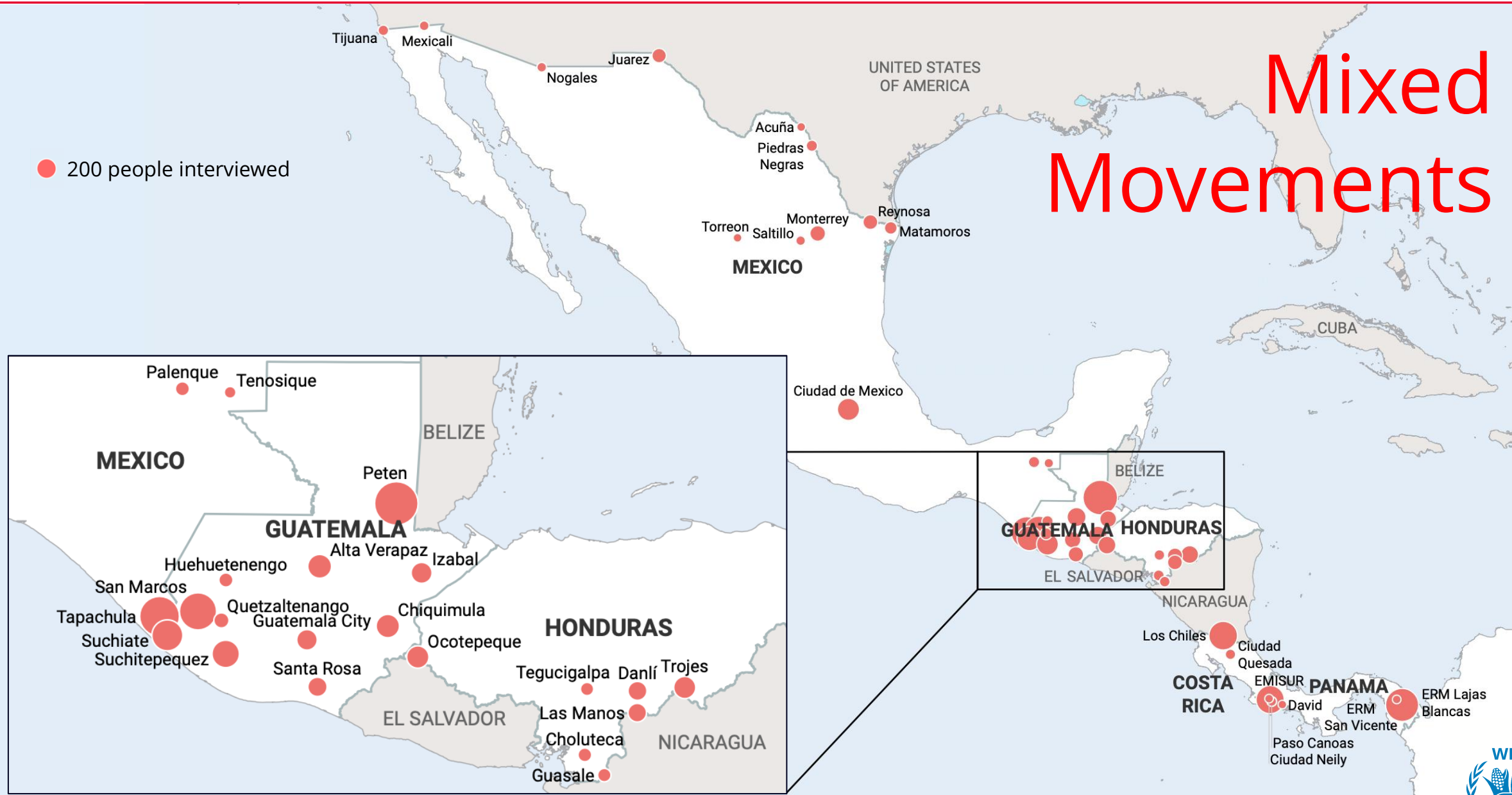
**GUATEMALA**

# Advance financing



# Mixed Movements

● 200 people interviewed



Source: Mixed Movements Monitoring, UNHCR-WFP-UNICEF, April - June 2024

The boundaries and names shown and the designations used on this map do not imply official endorsement or acceptance by the United Nations.





10<sup>th</sup> Regional Forum  
**School Meals**  
for Latin America and the Caribbean



# Partnerships



# Food Insecurity

**40.8 M people**  
acutely food insecure

**10.2 M people**  
severely food insecure

Key drivers / aggravating factors:



Migration



Economic  
shock



Floods



Tropical  
storm



Conflict /  
Insecurity



Drought





World Food Programme

Thank you  
Gracias  
*Merci*