



WFP EVALUATION

WFP Evaluation Function

EB Induction Session

Anne-Claire Luzot, Director of Evaluation

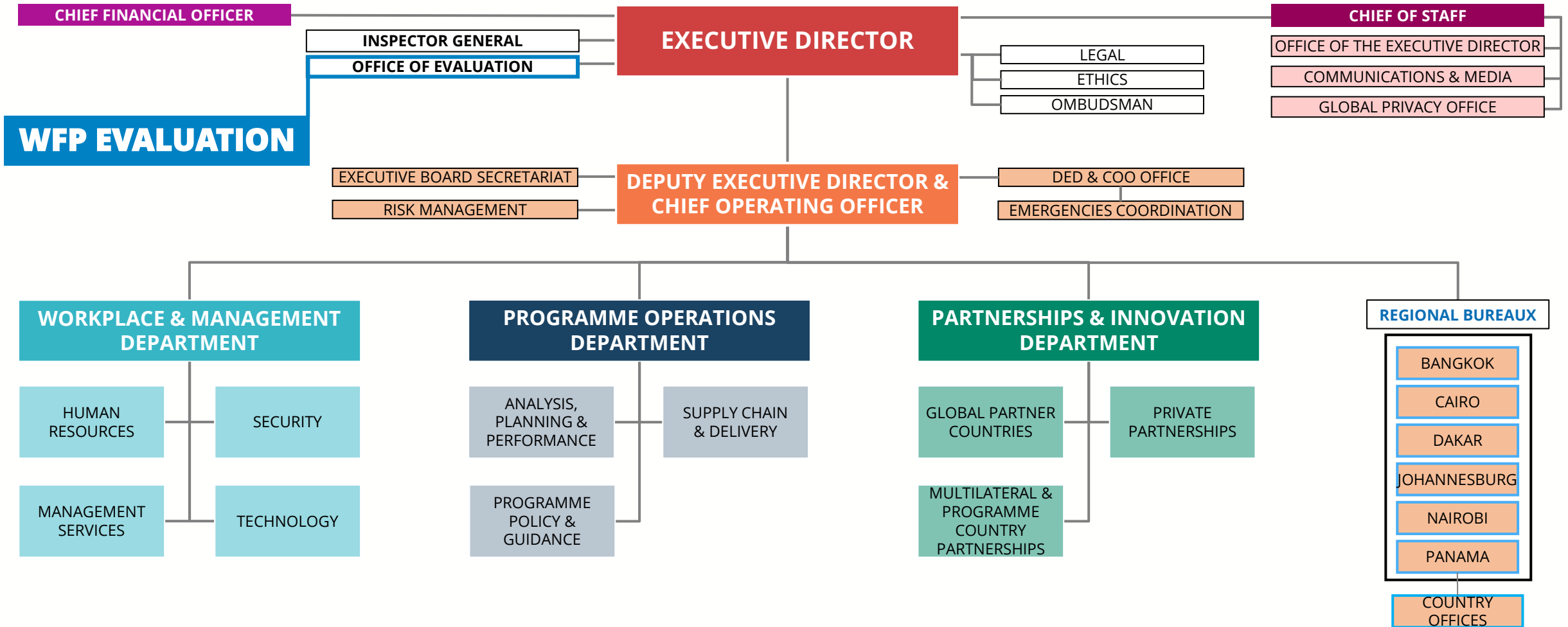


WFP
World Food Programme

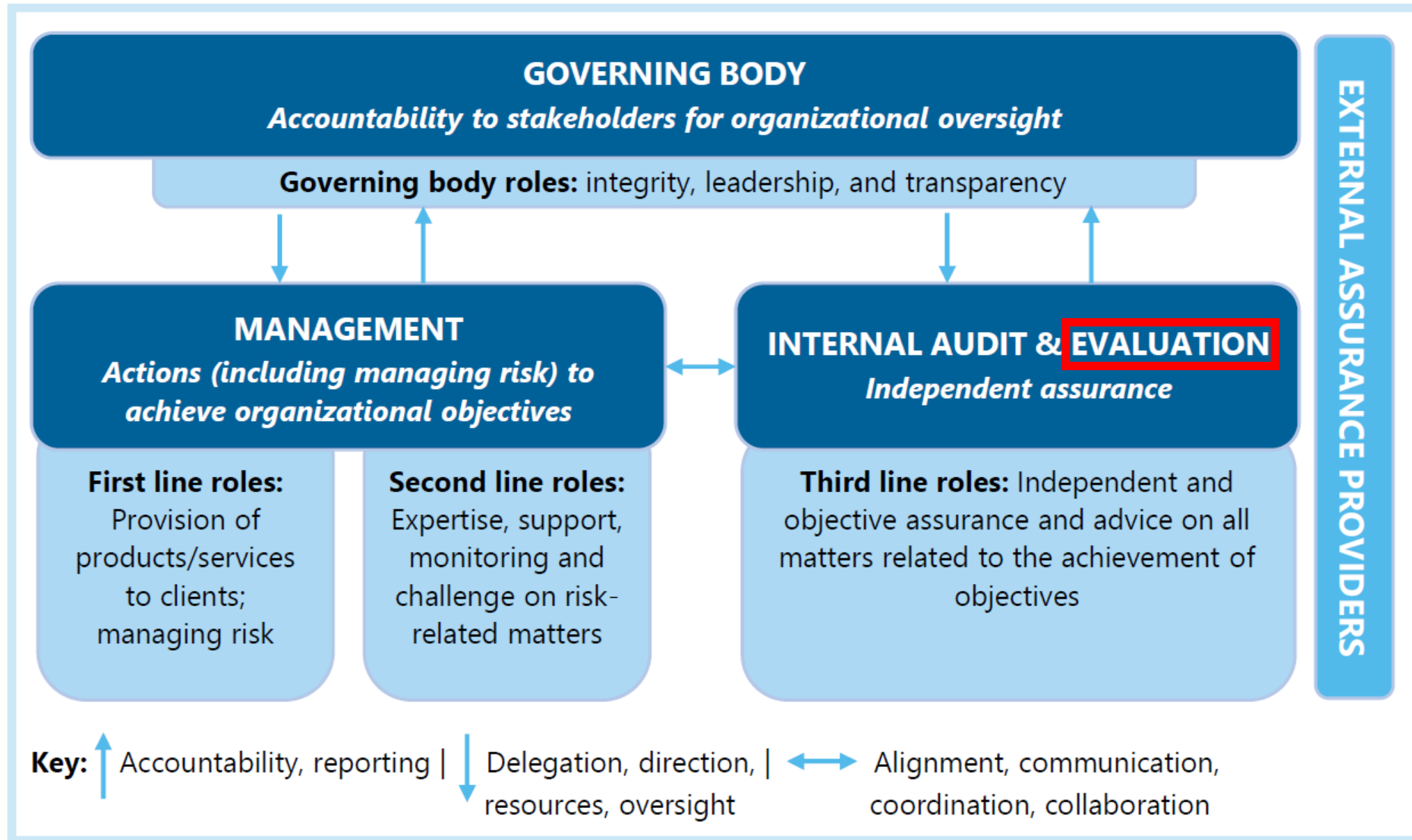
SAVING LIVES
CHANGING LIVES

October 2024

WFP organigram



WFP's three lines model



Evaluation framework



OECD/DAC Evaluation Criteria



WFP evaluation function oversight: Executive Board role in evaluation

OVERSIGHT

- Exercise oversight of evaluation function
- Guide management in policy implementation
- Consider Annual Evaluation Report & all centralized evaluation reports
- Consider management response & follow-up action reports

NORMATIVE FRAMEWORK

- Approve appointment, made by the Executive Director, of Director of Evaluation
- Provide strategic guidance through Annual Consultation on Evaluation
- Foster evaluation culture as members of WFP Governing Body

RESOURCING

- Approve Office of Evaluation's budget
- Review trends in human & financial resources dedicated to evaluation

PLANNING

- Review Office of Evaluation's work plan & priorities within WFP's Management Plan

USE

- Consider use of evaluation evidence when approving new policies, strategies, programmes, Management Plans, etc.
- Use evidence generated by evaluation in its decision-making

Evaluation planning and reporting

PLANNING

Evaluation Function Work Plan

WFP Management Plan ←



JOINT EVALUATIONS & EVALUATION SYNTHESSES

- Evaluation Policy 2022
- Corporate Evaluation Strategy
- Annual Consultation on Evaluation with EB

ENGAGEMENT WITH THE EB

- Informal Consultations on draft CSPs and relevant evaluation reports
- Round table on Evaluation reports and management responses
- WFP sessions of the Executive Board



REPORTING



Annual evaluation report
2023 in review

Annual Evaluation Report



Evaluation Reports

<https://www.wfp.org/independent-evaluation>

Upcoming CENTRALIZED evaluation reports

EB.2.2024



Mid-term evaluation of the WFP strategic plan

Synthesis evaluation on cooperating partners



Corporate emergency evaluation of WFP's emergency response to the prolonged crisis in the **Sahel and other countries of Central Africa** (2018–2023)



CSPEs

Colombia
Cuba
Mali
Rwanda
Syrian Arab Republic

EB.1.2025



Evaluation of WFP's environmental policy

Evaluation of WFP's emergency preparedness policy



Corporate emergency evaluation of WFP's response to the emergency in **Ukraine**



CSPEs

Iraq

EB.A.2025



Annual Evaluation Report 2024



Strategic evaluation on WFP's support to refugees, internally displaced persons and migrants

Evaluation of WFP's enterprise risk management policy



CSPEs

Ethiopia

Institutional arrangements





**THANK
YOU!**