



Guinea Country Strategic Plan

Executive Board Informal Consultations

March 27, 2024

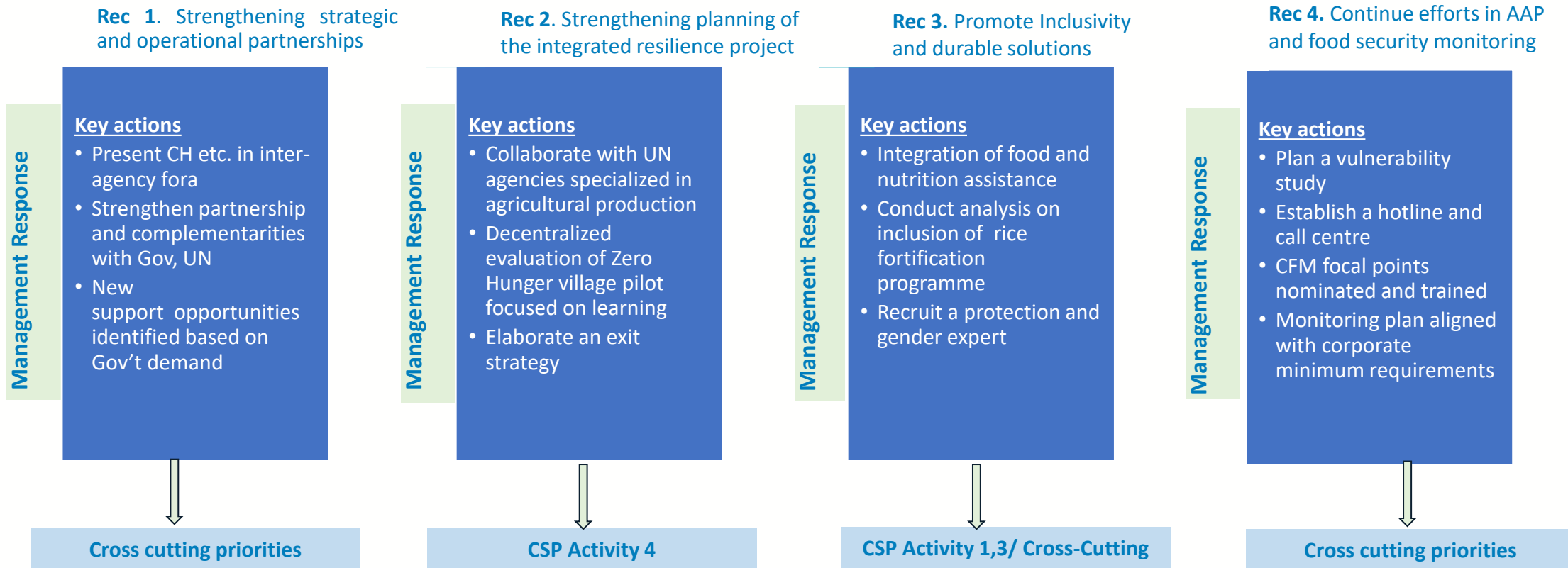


World Food Programme

SAVING
LIVES
CHANGING
LIVES

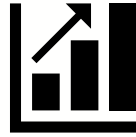
Evaluation and Learning: Use of CSPE evidence in CSP design

Management Response to the CSP evaluation of Guinea Country Office



Socio-economic indicators in Guinea are improving, but still at low levels, while the political situation is fragile

The economy is growing, but mainly from mineral extraction



GDP per capita has tripled in the last decade

But about 95 percent of Guinea's export is comprised of gold and aluminium ores and oxides

Given its endowment of arable lands and water resources, cereal yields in Guinea are far below its potential

Human development indicators are still at low levels



50 percent of the population lives under the national poverty line

181st ranking out of 193 countries on the Human Development index

350,000 children aged 6-59 months suffer from acute malnutrition

Threats from climate change and political instability are looming



24th most vulnerable country to the effects of climate change and **148th** in terms of preparedness

One-sixth of forest area is gone in the last three decades and soil degradation worsening

There is currently little visibility on the future of the national interim reference plan

Guinea CO's strategic focus is aligned with national priorities and responds to the needs on the ground



Guinea's Interim Reference Program (PRI - 2022-2025)



UNSDCF (2024-2028)
Highlighting priority areas for collaboration between the UN system and the government

SDG 2 Zero Hunger

- 1 Provide food and nutrition assistance to crisis-affected people
- 2 Provide access to healthy diets and basic services to vulnerable populations
- 3 Support communities whose livelihoods are at risk to increase resilience

SDG 17 Partnerships

- 4 Support national systems and institutions to achieve zero hunger and develop human capital
- 5 Provide access to transport and logistic services to government and other partners



Enhance joint programming and advocacy with **UN agencies** to improve synergies and progress towards the SDGs



Consolidate and diversify **donor base** to secure flexible and multi-annual funding



Strengthen collaboration with the **Government** to enhance capacities



World Food Programme

The programmatic design balances direct delivery and national system strengthening under a challenging political situation

