

ANNEX V: WFP'S COLLABORATION WITH COOPERATING PARTNERS IN 2023

- In 2023, WFP partnered with 877 non-governmental organizations (NGOs), including national societies of the Red Cross and Red Crescent Movement. Of these partners, 82.5 percent were local actors.

Figure 1: Cooperating partners in numbers, 2023

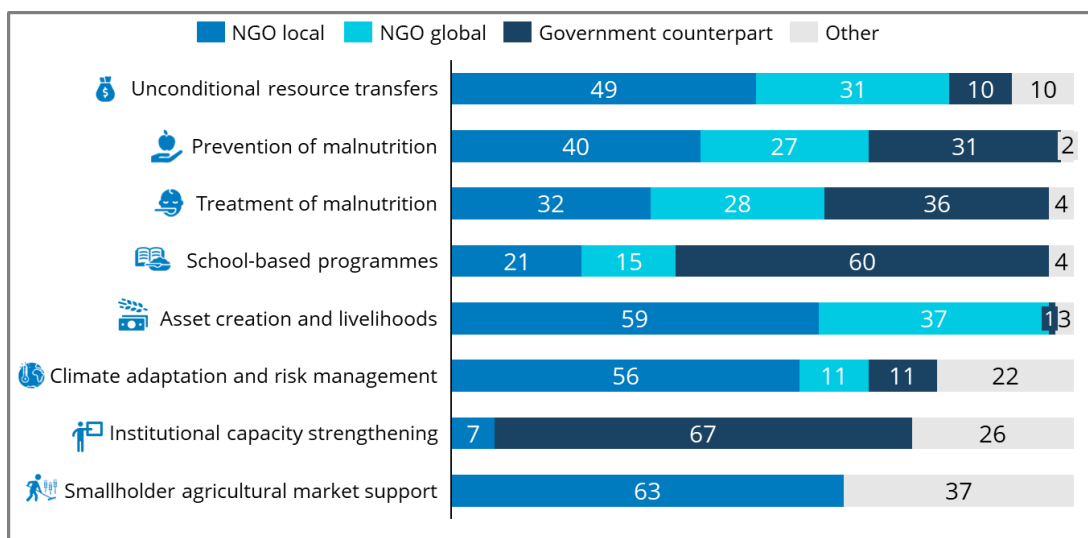


▼ ▲ % increase / decrease compared with 2022.

Note: The term “government counterparts” refers to various types of government entity in a country where WFP operates and encompasses any entity at the national, regional, provincial, district, municipal or lower level that is duly authorized to enter into agreements with WFP, including national agencies or institutions.

- WFP collaborated with NGOs in 69 countries to implement a diverse array of activities, spanning eight programme areas. NGOs are the primary partners in implementing WFP's unconditional resource transfer operations, of which up to 80 percent are implemented in partnership with NGOs.
- Meanwhile, host governments continue to provide significant support to WFP's initiatives in school feeding and institutional capacity strengthening.

Figure 2: Percentages of partners by programme area and partner type



Focus on localization

4. In 2023, WFP channelled an estimated 31.1 percent of the value of all its confirmed contributions through national and local actors,¹ thus meeting and exceeding its Grand Bargain commitment of channelling 25 percent through such partners. This is the highest percentage recorded since 2013.
5. In 2023, WFP began to develop its first policy on localization, which is scheduled for presentation to the Executive Board in February 2025.

Update on the digitization of the partnership process

6. In line with the global assurance project, WFP has been heavily focused on rolling out its end-to-end digital solutions and developing data analytics to provide a full overview on the implementation of partnerships. The introduction of Partner Connect² as the primary point of engagement for WFP's cooperating partners has not only helped to build the digital literacy and access to data of WFP's cooperating partners but has also added transparency and accountability to the partners' engagement in WFP operations.
7. In 2023, WFP rolled out the Partner Connect reporting module to an additional 11 country offices, bringing the total number of country offices using the module to 18. Since the middle of 2023, the primary focus of the roll-out has been on high-risk country offices, in line with the global assurance project. Partner Connect has continued to evolve and improve based on users' feedback and through its modular approach. The second module of Partner Connect, the field-level agreement manager, was developed to enhance transparency and streamline negotiation and contractual management processes. It was rolled out to two country offices at the end of 2023 in order to gather feedback from end-users to guide further enhancements. The third module, currently under development, focuses on invoicing and financial tracking; the first phase of its development was completed in the last quarter of 2023.
8. Also in 2023, a focus on improving end-to-end data analytics led to the development of an application called the "Partnerships Tracker" which integrates corporate-level data from WFP's systems to provide automated tracking of agreements with NGOs. The tracker will assist WFP field staff in gaining better insights into the ongoing implementation of field-level agreement implementation, while also saving staff time by eliminating the need for offline tracking methods.

¹ Measured in terms of the key performance indicator "Percentage of WFP funding to cooperating partners, awarded as directly as possible to local and national responders" in WFP's corporate results framework.

The formula for measuring the indicator value is the following:

$$\% \text{ of WFP funding to local partners} = x + y + zX \times 100$$

where:

x = actual expenditures paid to national cooperating partners (local NGOs and host governments) as stipulated in the field-level agreement;

y = value of the food transferred to WFP beneficiaries through national cooperating partners (local NGOs and host governments);

z = value of cash-based transfers transferred to WFP beneficiaries through national cooperating partners (local NGOs + host governments); and

X = total contributions made to WFP.

² Partner Connect is a technology solution for managing partnerships that digitizes paper-based processes, improves data quality and streamlines information flow. The platform has three modules, each addressing a different aspect of the cooperating partnership framework: the distribution reporting module; the field-level agreement manager; and the financial transaction tracker, which is currently under development.

Strengthening WFP's capacity for the management of partnerships with non-governmental organizations

9. In 2023, WFP made solid strides in strengthening the capacities of its NGO partnership management function, especially at the regional bureau level. Regional units for cooperating partner management were established and have been instrumental in offering tailored oversight and guidance to country offices, ensuring context-specific support and management.