



World Food Programme



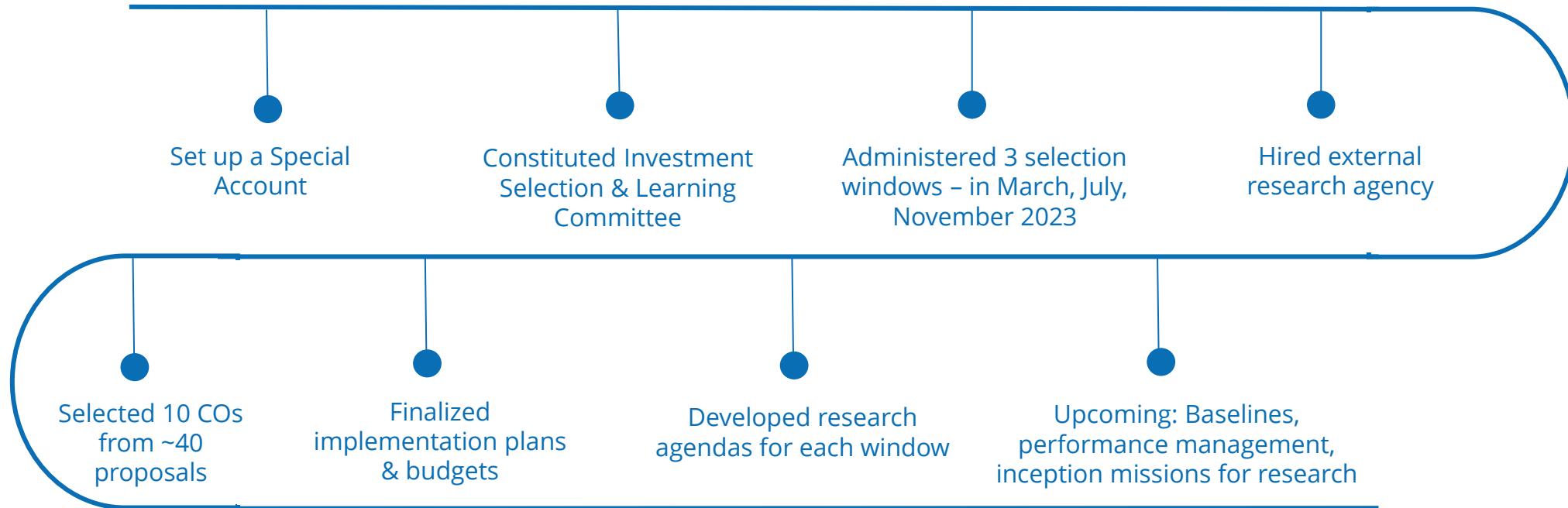
# Changing Lives Transformation Fund (CLTF)

*Executive Board Update  
February 2024*

SAVING  
LIVES  
CHANGING  
LIVES

# Over the past 15 months, the CLTF has set up a system to identify, fund, and evaluate promising programs

November 2022



February 2024

# 10 proposals selected with strong value propositions that enhance national systems and innovate across three themes



## Transitions



**Philippines** shift to a homegrown, universal model for school meals



**Kenya, Chad:** Enable refugee and host population productivity and increased self-reliance

## Systems Strengthening



Improve and expand social protection programs for vulnerable women and children in **Bangladesh**



Enable smallholder farmers in **Peru** to supply government safety nets



Create pathways to employment or entrepreneurship in **Iraq**



Transform lean-season assistance in **Niger**

## Climate Adaptation

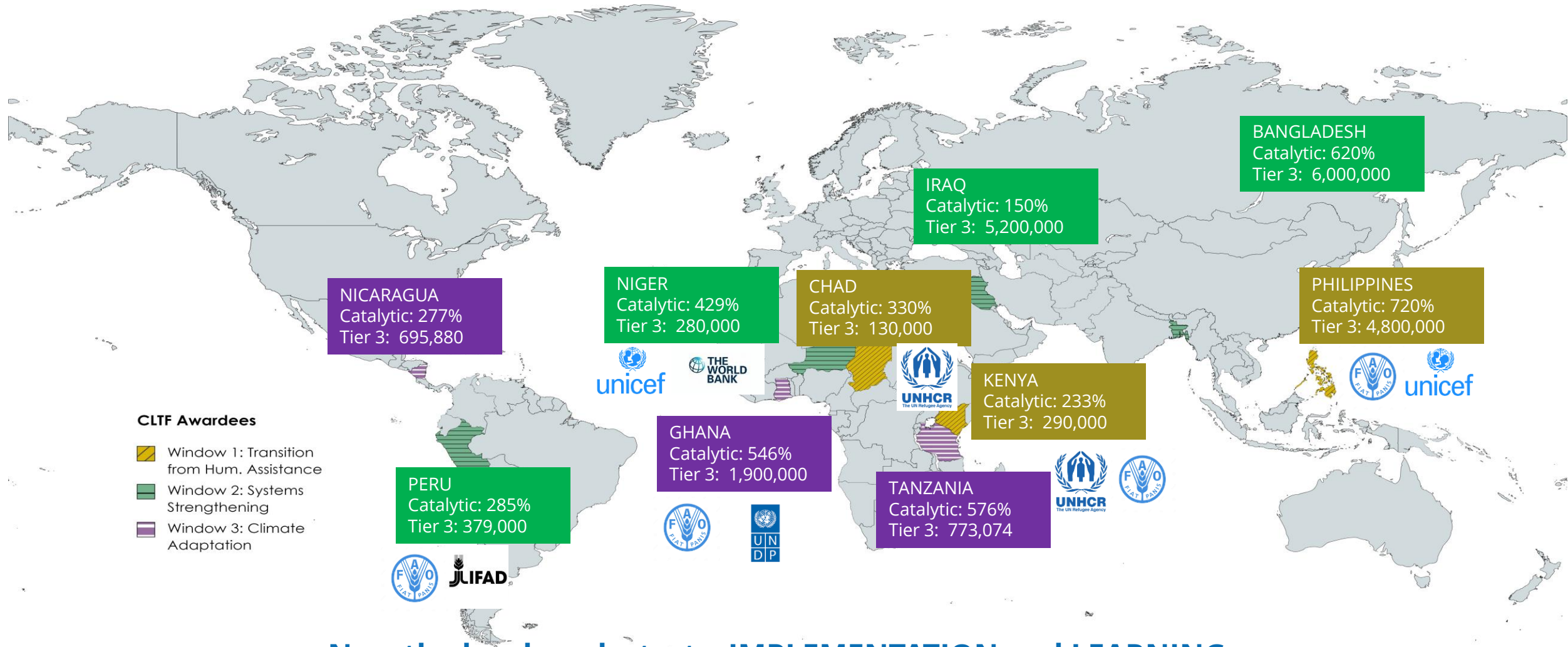


Enable smallholder farmers in **Nicaragua** and **Ghana** to adapt to climate change, and generate income from carbon credits



Adapt social protection systems to improve resilience to climate shocks in **Tanzania**

# GOAL: 10 countries aim to raise \$268 million in catalytic funding benefitting 20 million people



Now the hard work starts: **IMPLEMENTATION** and **LEARNING**

Created with mapchart.net

# Each CLTF CO commits to developing a strong research plan, supported by HQ and an external think tank

**Timelines**  
May 2024-January 2027

## Research Questions

### Chad

What is the impact on self reliance of a WFP-supported **integrated resilience** program for refugees and host population?

### Peru

What is the impact on food and nutrition security of **linking smallholder farmers to public procurement?**

### Bangladesh

What is the impact of **enhanced social protection** on vulnerable women's food security and self-reliance?

### Kenya

What is the impact of **layering social protection and resilience** on refugees and vulnerable host communities' food security and self-reliance?

## On outcomes of Interest



## Research Partners:

Centre for Evaluation & Development (C4ED, Mannheim), Impact Evaluation (OEV, WFP) & DIME (World Bank)