



Dominican Republic Country Strategic Plan 2024 – 2028

Informal consultation

28 July 2023



World Food
Programme

SAVING
LIVES
CHANGING
LIVES

COUNTRY CONTEXT

- Upper-middle income country, with a high HDI of 0.767

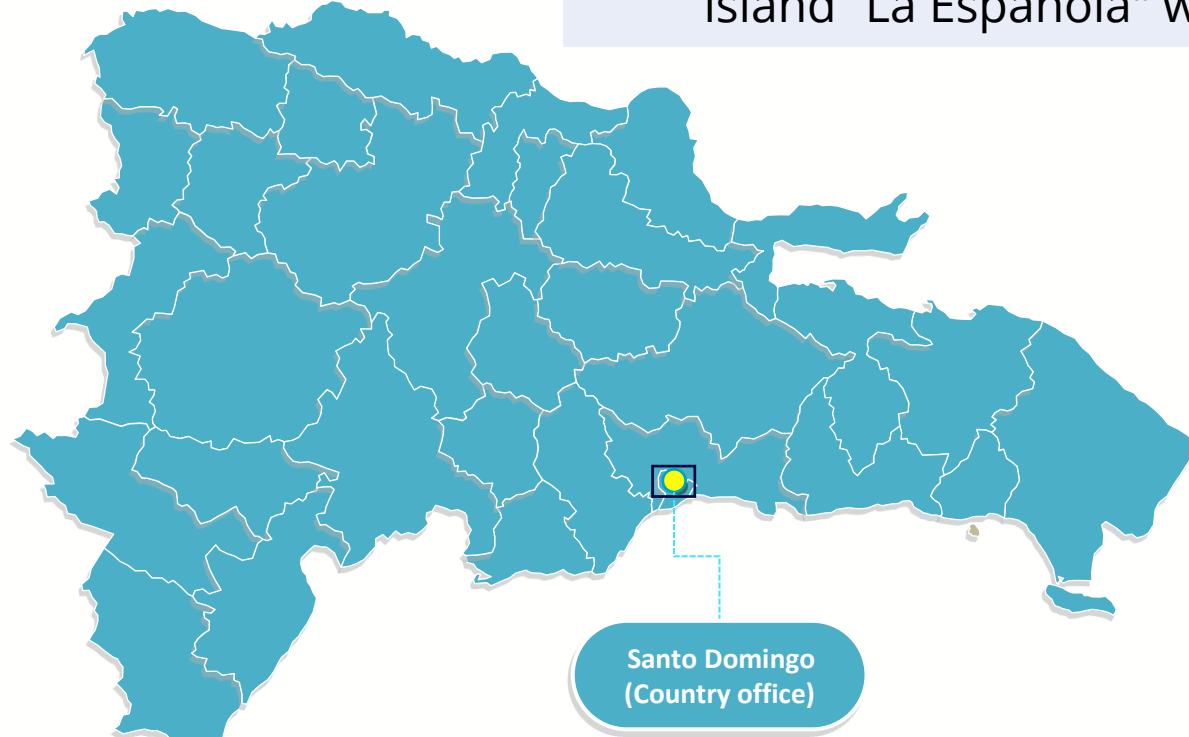
Poverty:

- Monetary poverty:
 - National: 23.85%
 - Extreme poverty: 3.06%
- Multidimensional poverty:
 - Rural 23.1%
 - Urban 15.2%

Malnutrition:

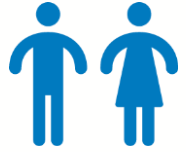
- Chronic child malnutrition (24 to 59 months): 5.9%
- Anaemia: 30% children under 5
- More than half of adults are **overweight**
- 1 in 3 women and 1 in 5 men are **obese**

It is a Small Island Developing State (SIDS) of the Caribbean and shares the island "La Española" with Haiti.

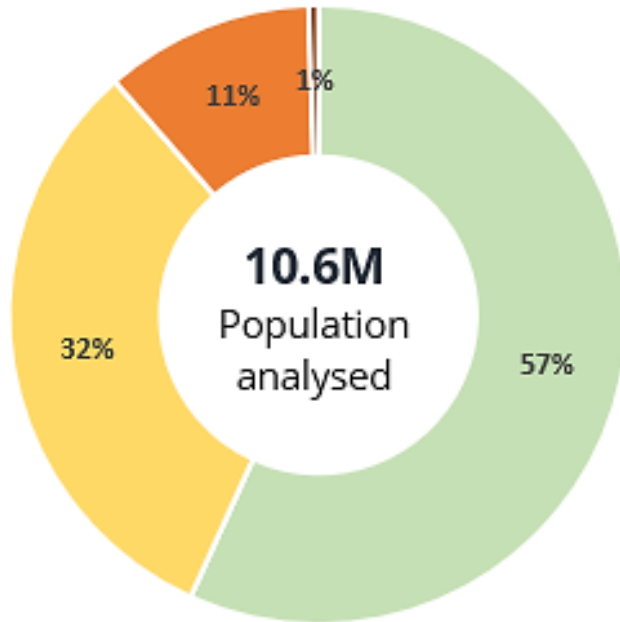


Threats: Extremely vulnerable to hurricanes, cyclones, tropical storms, floods, droughts and earthquakes.

COUNTRY CONTEXT



Over **1.2 M people** (12% of the population) are estimated to experience high levels of acute food insecurity (IPC phase 3 or above).



- Phase 1 - Food security
- Phase 2 - Stressed
- Phase 3 - Crisis
- Phase 4 - Emergency



KEY STRATEGIC CHANGES

Better **integration** across
CSP Outcomes and
Activities

Stronger **systems
approach** to **reduce
needs** and **foster
development**
(Triple nexus)

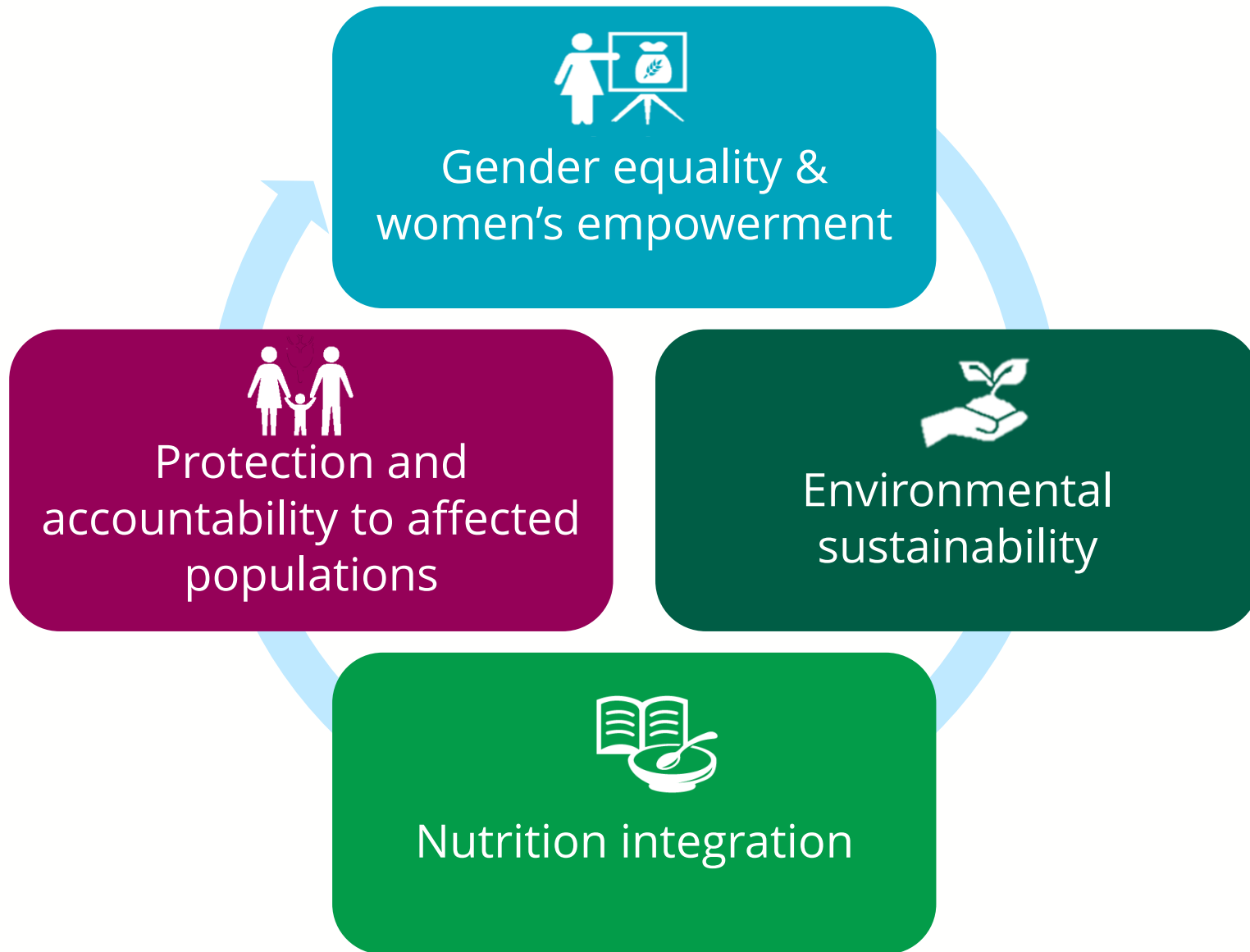
Larger presence in **rural**
and **peri-urban** areas.

Stronger focus on
localization of actions.

STRATEGIC FOCUS

SDG TARGET/ STRATEGIC OUTCOME	ACCESS TO FOOD: SO 1	END MALNUTRITION: SO 2	SUSTAINABLE FOOD SYSTEM: SO 3	CAPACITY STRENGTHENING: SO 4	ENHANCE GLOBAL PARTNERHIPS: SO 5
WFP FOCUS AREA	CRISIS RESPONSE	ROOT CAUSES	RESILIENCE BUILDING	RESILIENCE BUILDING	RESILIENCE BUILDING
ACTIVITIES	1 UNCONDITIONAL RESOURCE TRANSFER	2 MALNUTRITION PREVENTION PROGRAMME	3 SMALLHOLDER AGRICULTURAL MARKET SUPPORT	4 SOCIAL PROTECTION SECTOR SUPPORT	5 ON-DEMAND SERVICES
UNIQUE DIRECT BENEFICIARIES	145,000	946,820	32,800	-	-
TARGET BENEFICIARIES	PEOPLE AT RISK OF FOOD AND NUTRITION INSECURITY, CHILDREN, OLDER PERSONS, PEOPLE LIVING WITH HIV AND TB, PEOPLE WITH DISABILITIES, PEOPLE SEEKING CITIZENSHIP OR IN TRANSIT	PREGNANT AND LACTATING WOMEN AND GIRLS, CHILDREN AGE 6- 59 MONTHS, SCHOOL- AGED CHILDREN, OLDER PERSONS, PEOPLE LIVING WITH HIV AND TB, PEOPLE WITH DISABILITIES, PEOPLE SEEKING CITIZENSHIP OR IN TRANSIT	SMALLHOLDER FARMERS, INFORMAL WORKERS (DAY LABOURERS, FISHERFOLK AND PEOPLE WORKING IN THE TOURISM SECTOR), LOCAL INSTITUTIONS (INCLUDING FEMALE-LED ASSOCIATIONS)	NATIONAL AND LOCAL INSTITUTIONS	NATIONAL AND LOCAL HUMANITARIAN AND DEVELOPMENT INSTITUTIONS
TOTAL BUDGET USD 47.3 M	USD 12.1 M	USD 8.3 M	USD 11.5 M	USD 5.9 M	9.2 M

CROSS-CUTTING PRIORITIES



ENABLERS



Thank you.



28 July 2023