



World Food Programme

SAVING  
LIVES  
CHANGING  
LIVES

# São Tomé and Príncipe

## Country Strategic Plan 2024-2028

Executive Board Informal Consultation  
27 July 2023

# OPERATIONAL CONTEXT

## Population



- Population of 215,000
- 50% under 25 years
- 30% live on less than USD1.90/day

## Economy



- Geographic isolation
- Reliance on imports
- 97% public investment financed through debt/Official development assistance

## Social



- Inadequate social protection coverage
- Limited economic opp. for youth
- Persistent Gender based violence

## Health & Nutrition



- High anemia prevalence (65% children under 5)
- Increasing overweight, obesity and non-communicable diseases

## Climate Change



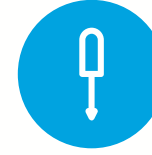
- High vulnerability to climate shocks
- Rising sea levels lead to floods, while drought accounts for 25% of hazards

# 2G INTEGRATED APPROACH

**School Feeding**  
Revised school feeding law & integration of school feeding into the social protection system



**Climate Adaptation**  
Green Climate Fund and subsequent development of a National Adaptation Plan



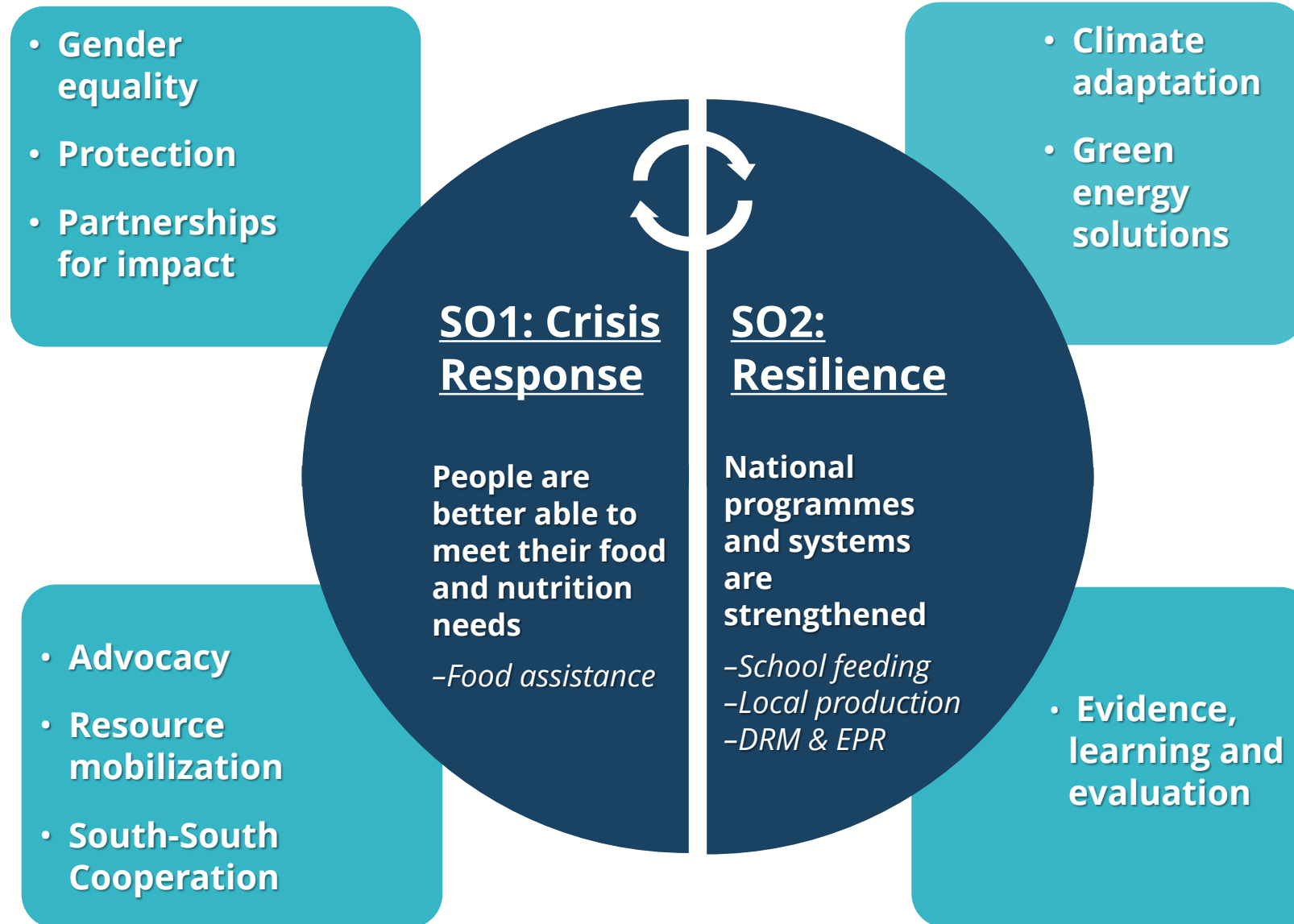
**Local Production**  
Focus on resilient food systems



**Emergency Preparedness**  
Contingency plan to prioritise SF/SHF with food assistance while developing DRM and early warning systems



# 2G CSP STRATEGIC FOCUS



**THANK YOU!**