



World Food Programme

SAVING  
LIVES  
CHANGING  
LIVES

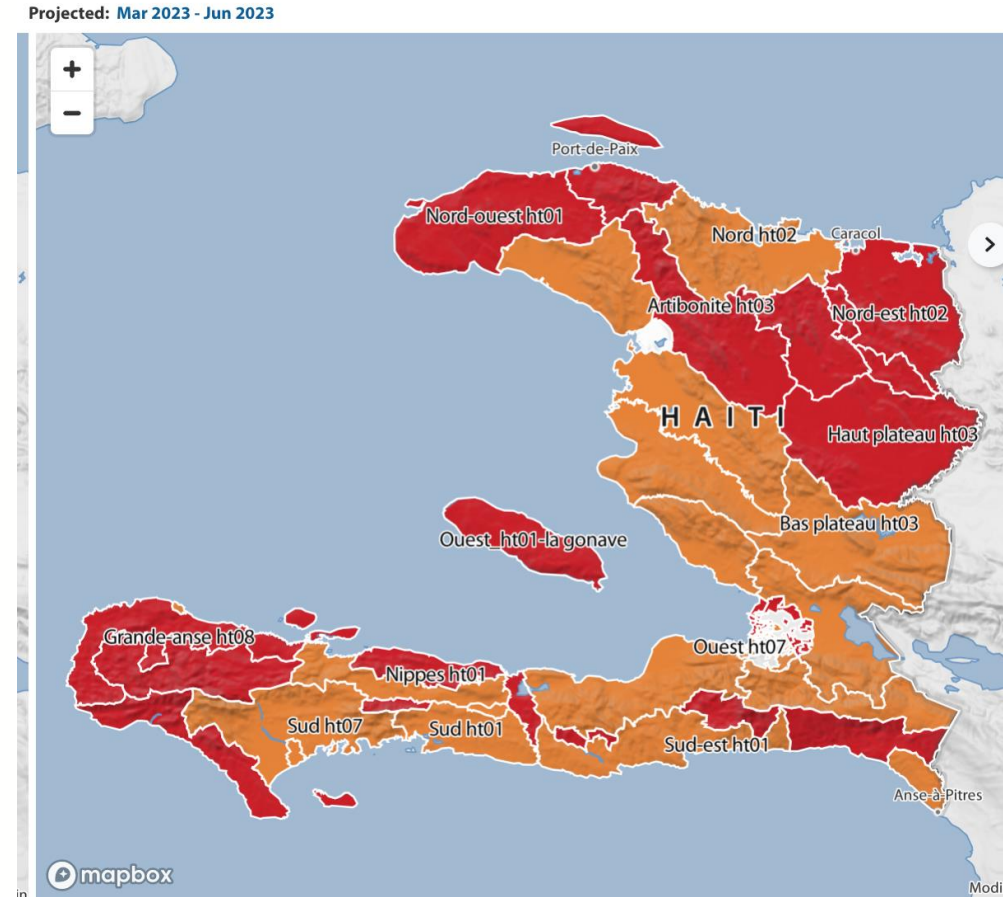
# Haiti Country Strategic Plan 2024 – 2028

## Informal consultation

28 July 2023

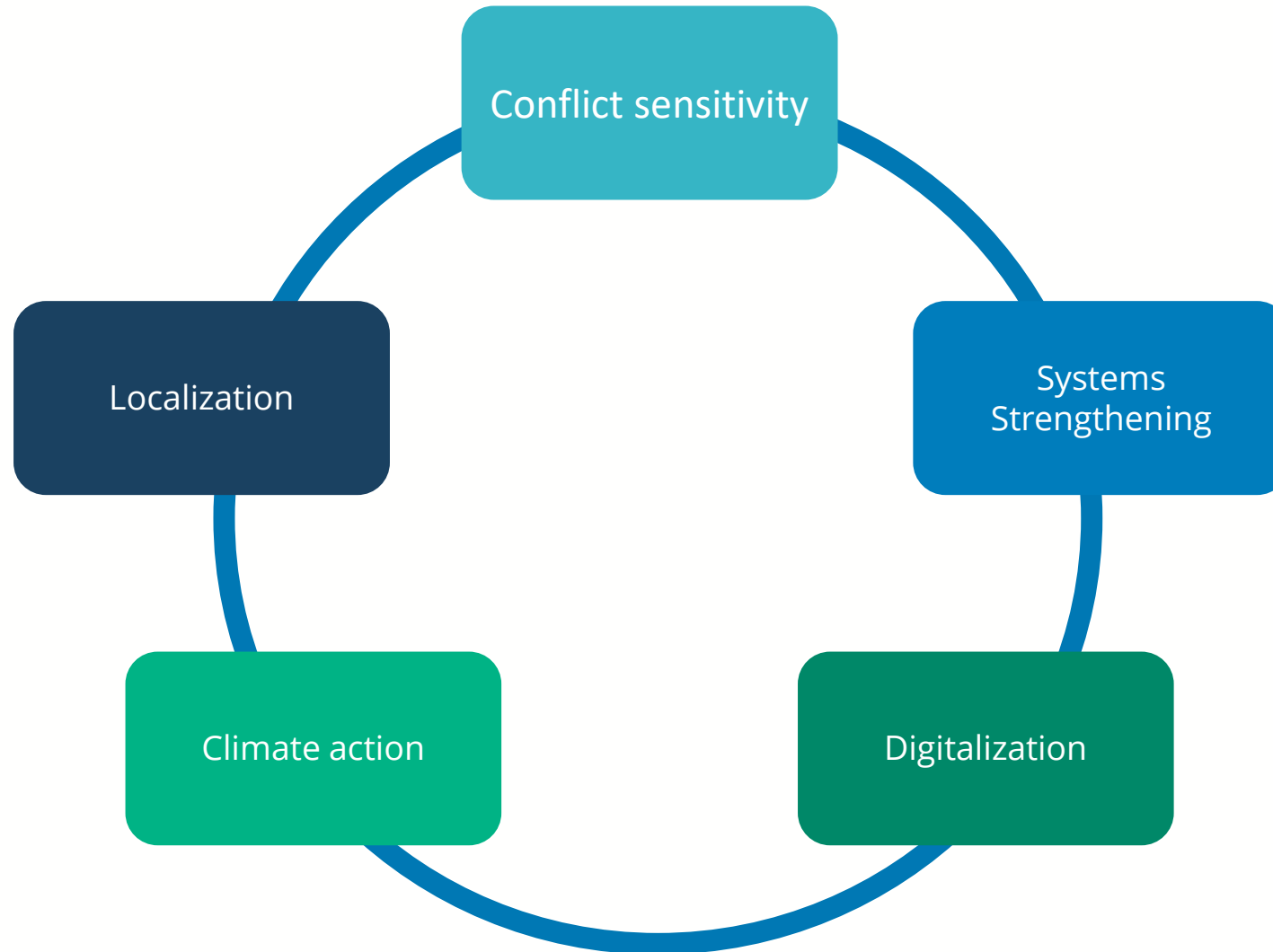
# HAITI IS FACING AN ACUTE AND COMPLEX CRISIS

- Unprecedented violence and lockdowns
- Economic crisis
- Return of cholera
- Weather hazards and earthquakes
- Acute food insecurity has tripled since 2017
- Humanitarian needs are the highest since the 2010 earthquake



	Name	Area Phase	Total # (pp)	Phase 1		Phase 2		Phase 3		Phase 4		PI #
				#	%	#	%	#	%	#	%	
<b>Total</b>	Show Areas ▼		9,906,757	2,378,323	24%	2,816,900	28%	3,038,489	30%	1,653,839	17%	19,2

# STRATEGIC SHIFTS AND IMPROVEMENTS IN THE CSP



# KEY CSP MILESTONES 2024–2028



WFP school feeding 100 percent home grown by 2028, up from 45 percent currently.



SIMAST registry to cover 70 percent of the population in 2028, up from 30 percent currently



30 percent of the WFP emergency contingency stock sourced locally, it is exclusively imported currently



75 percent of distributions implemented by local NGOs, up from 57 percent currently



WFP transfers are 65 percent cash overall over the life of the CSP compared to 51 percent currently



WFP CBT is 75 percent digital by 2028, up from 50 percent currently



# STRATEGIC ALIGNMENT



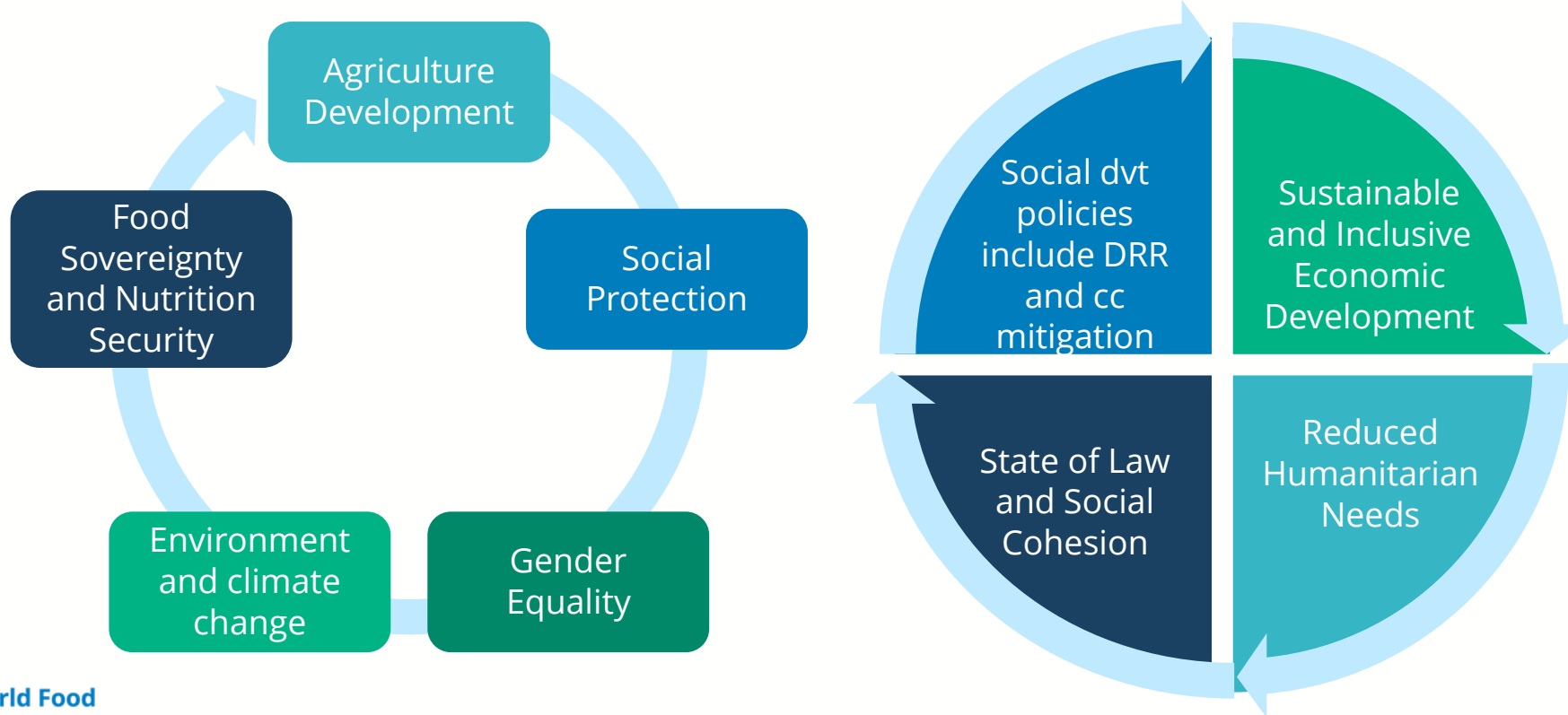
Haiti's National Strategic Development Plan



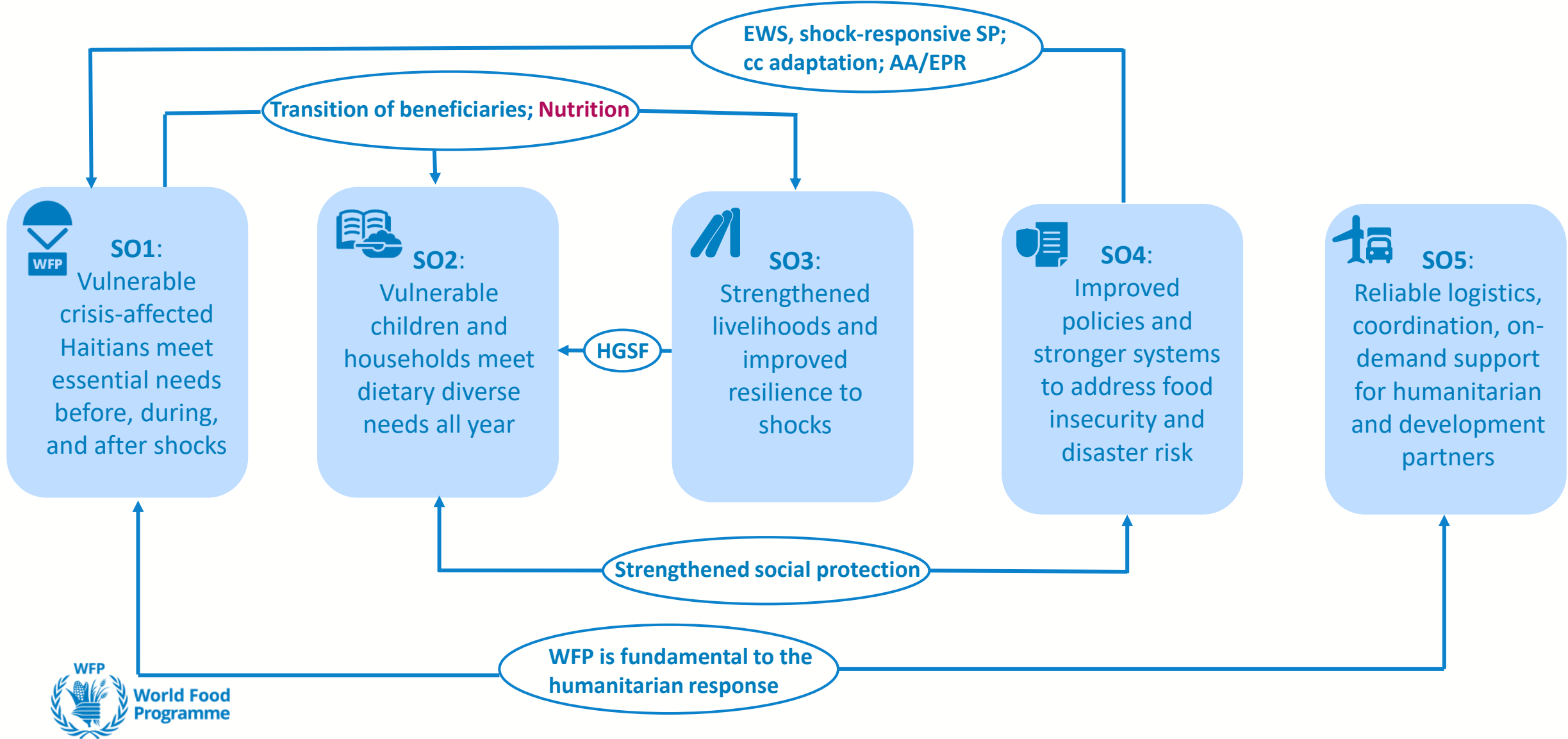
The United Nations Sustainable Development Cooperation Framework (UNSDCF) 2023-2027



Haiti Country Strategic Plan (2024-2028)



# THE CSP IS STREAMLINED AND INTER-CONNECTED





World Food Programme

SAVING LIVES  
CHANGING LIVES

**Thank you**