



World Food Programme

SAVING
LIVES
CHANGING
LIVES

Malawi Country Strategic Plan (CSP) 2024-2028

Country Context



HIGH LEVELS OF POVERTY (**OVER 70%**) AND LOW LEVELS OF DEVELOPMENT (HDI RANKING 169)



HIGH CHRONIC FOOD INSECURITY (**OVER 5.4 MILLION**) AND HIGH STUNTING (**35% CHILDREN**)



LOW PRODUCTIVITY: 80% OF RURAL LIVELIHOODS FROM UNMECHANISED, RAINFED AGRICULTURE ON SMALL PLOTS OF LAND WITH POOR SOIL



LIMITED AGRICULTURAL DIVERSIFICATION (MAIZE-CENTRIC FARMING)



RAPID POPULATION GROWTH: YOUTH BULGE - FROM 19 MILLION TO **50 MILLION BY 2060**



CULTURAL PERCEPTIONS ON WOMEN AND YOUTH CONTRIBUTE TO **INEQUALITY** AND **LIMITED OPPORTUNITIES**



HIGHLY VULNERABLE TO CLIMATE CHANGE: **LAND DEGRADATION** AND **HIGH DEFORESTATION** CONTRIBUTE TO **NATURAL RESOURCE DEPLETION** AND POVERTY



THE **4F CRISES:** MACROECONOMIC INSTABILITY COMPOUNDED BY HIGH COSTS OF **FOOD, FUEL, FERTILIZER** AND **FOREX** CHALLENGES

Recommendations from CSP 2019-2023 Evaluation

EVALUATION RECOMMENDATION

DIRECTION IN NEW CSP

BUILD ON THE POSITIVE EVOLUTION TOWARDS AN INTEGRATED PROGRAMME

AN INTEGRATED APPROACH WILL BE AT THE CORE OF WFP MALAWI'S CSP, FOSTERING LINKAGES BETWEEN RELIEF, SOCIAL PROTECTION, RESILIENCE AND SCHOOL MEALS

EXPAND ON THE STRATEGY IN WHICH WFP PLAYS A STRONGER ROLE AS AN ENABLER

BUILD UPON EXISTING INTERVENTIONS WITH GOVERNMENT AND CONTINUE WORKING TO STRENGTHEN SYSTEMS AND TECHNICAL CAPACITY

SCALE UP PARTNERSHIPS AND COLLABORATION FOR IMPACT AND SUSTAINABILITY

WFP MALAWI WILL CONSOLIDATE EXISTING RELATIONSHIPS AND ENGAGE NEW AND INNOVATIVE STAKEHOLDERS

Shifts from 1G to 2G CSP



INCREASED ENABLING ROLE FOR GREATER NATIONAL OWNERSHIP & SUSTAINABILITY



SCALED UP CAPACITY STRENGTHENING ROLE FOR SUPPLY CHAIN (FOOD SYSTEMS, EMERGENCY PREPAREDNESS & RESPONSE, HEALTH SUPPLY CHAIN)



SHIFT FROM NUTRITION TREATMENT TO PREVENTION, AND INTEGRATION OF NUTRITION-SENSITIVE APPROACHES



STRENGTHENED ROLE IN KNOWLEDGE AND SYSTEMS MANAGEMENT



TRANSITION TO 100% HOME-GROWN SCHOOL FEEDING AND INCREASED LINKAGES BETWEEN SCHOOL FEEDING AND RESILIENCE



GREATER EMPHASIS ON ACCESS TO FINANCE AND TO MARKETS FOR RESILIENCE-BUILDING ACTIVITIES

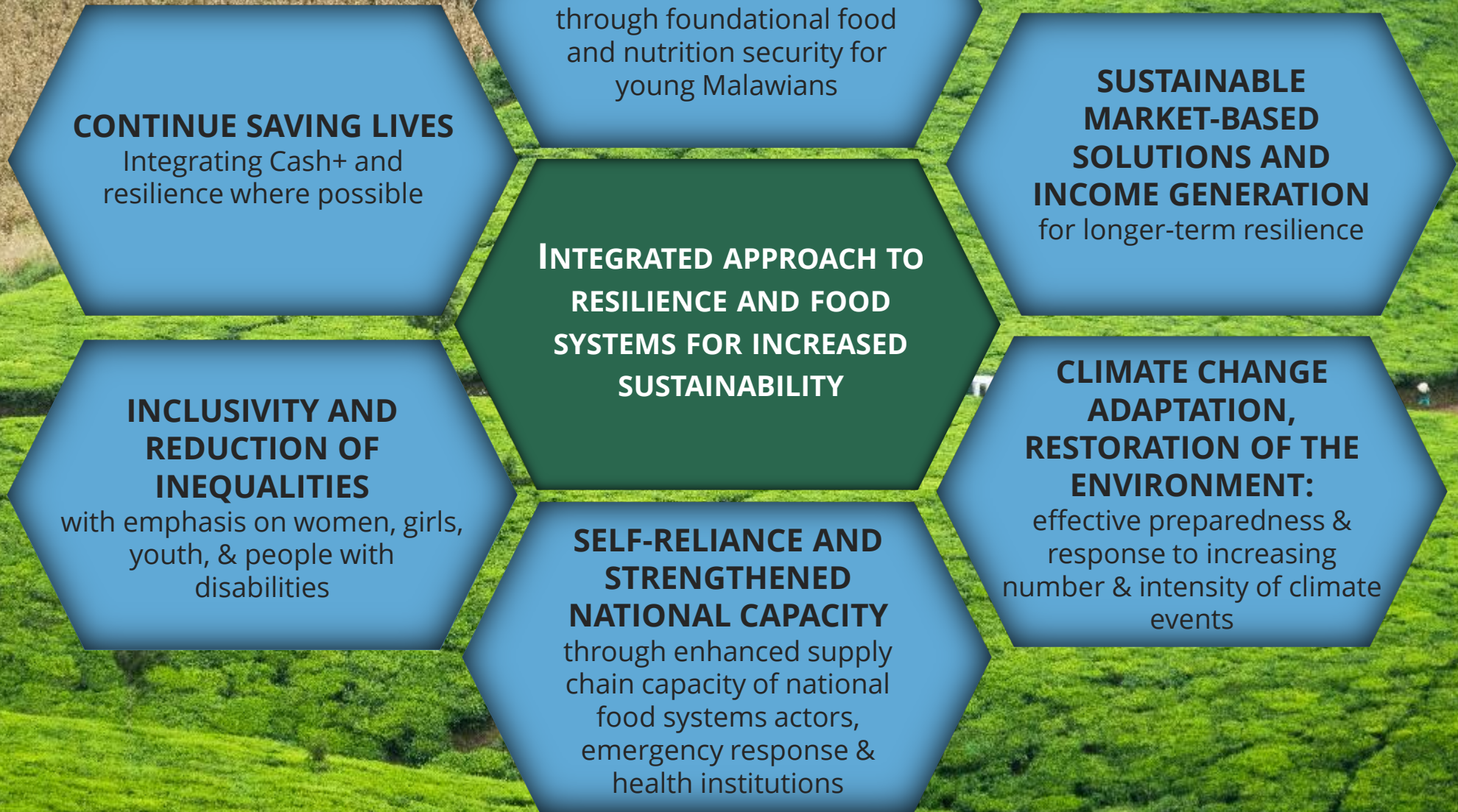


TRANSITION FROM FOOD TO CASH (E-CASH WHERE POSSIBLE)



INCREASED EMPHASIS ON CONDITIONAL CASH TRANSFERS (CASH+)

CSP Strategic Vision



Strengthening social protection systems, nutrition mainstreaming, scaling up digital opportunities, innovation, and strengthening capacity at all levels, increasing enabling role

MALAWI CSP ALIGNMENT WITH UN SYSTEM & NATIONAL DEVELOPMENT PRIORITIES



WFP 2G CSP

STRATEGIC OUTCOME 1

Food and nutrition insecure populations in Malawi, including refugees, affected by shocks can meet their food and nutrition needs throughout the year

STRATEGIC OUTCOME 2

Targeted populations in Malawi have improved nutrition, health and education outcomes for enhanced human capital development in line with national targets by 2028

STRATEGIC OUTCOME 3

People in Malawi including women, youth and people with disabilities have better and more climate-resilient and sustainable livelihoods through improved resource management, skills development and access to financing and markets by 2028

STRATEGIC OUTCOME 4

National and sub-national actors in Malawi have strengthened capacities to design and implement policies and programmes for sustainable food and health systems as well as food and nutrition security by 2028

STRATEGIC OUTCOME 5

Government and humanitarian and development partners in Malawi have improved access to and benefit from innovative, effective and cost-efficient supply chain, logistics and other services throughout the year

IMPLEMENTED WITH AN INCLUSIVE LENS TO CONSIDER YOUTH, WOMEN AND PERSONS WITH DISABILITIES



UNSDCF PILLARS

Support sustainable, diversified and inclusive growth

Strengthen institutional governance, processes and policies

Accelerate investments and outcomes in human capital development

Mitigate climate change, environmental degradation and support energy transformation



NATIONAL DEVELOPMENT PRIORITIES

- Malawi Vision 2063 – AN INCLUSIVELY WEALTHY AND SELF-RELIANT NATION
- 10-year implementation plan (MIP1: 2021-2030) – Mainly Pillar 1 and the MIP Enablers
- National plans, policies and programmes related to sustainable and transformative agriculture, education, health, social protection, anticipatory action and disaster preparedness and response

WELCOME TO MALAWI

00:04





THANK YOU — ZIKOMO