



Corporate Planning and Performance Division (CPP)

Implementation Status of evaluation recommendations for 2022

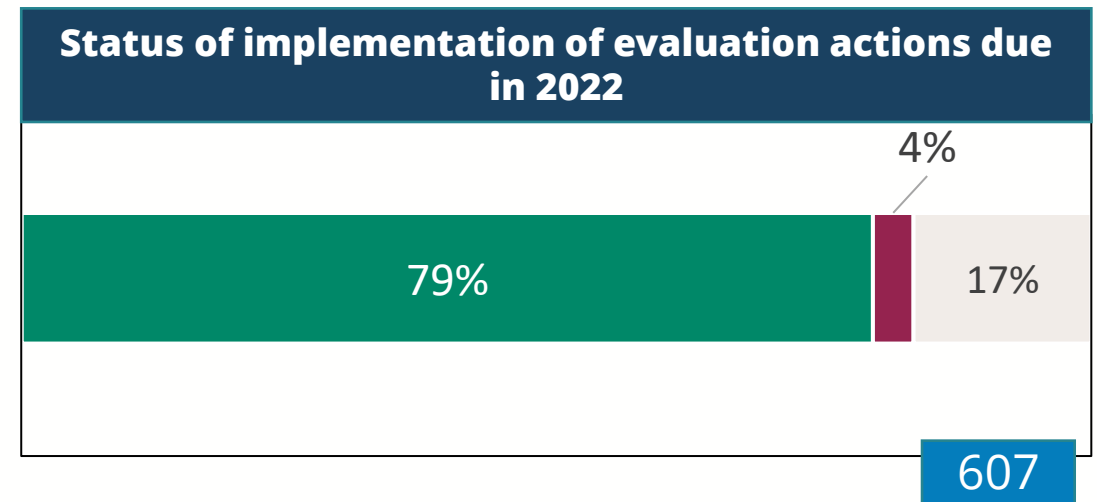
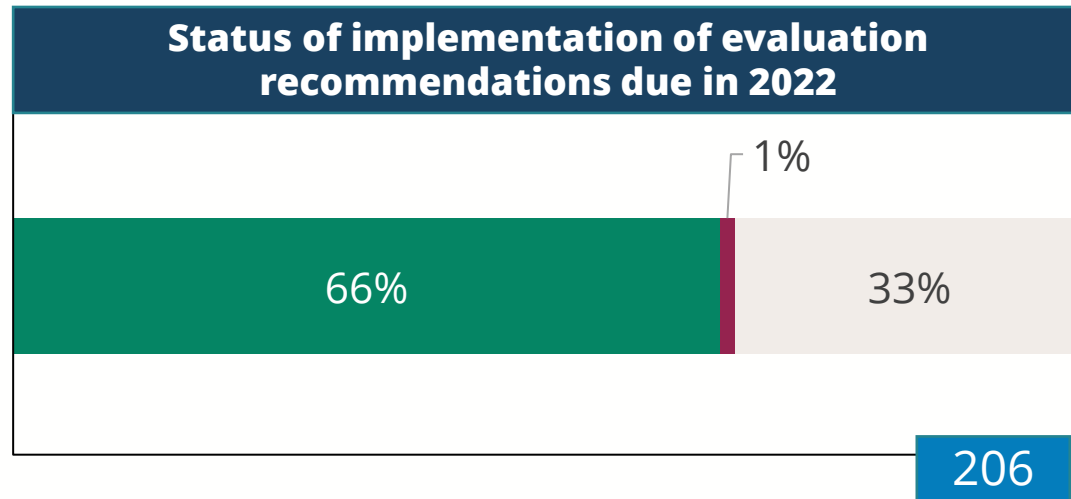
25 May 2023



WFP
World Food Programme

SAVING LIVES
CHANGING LIVES

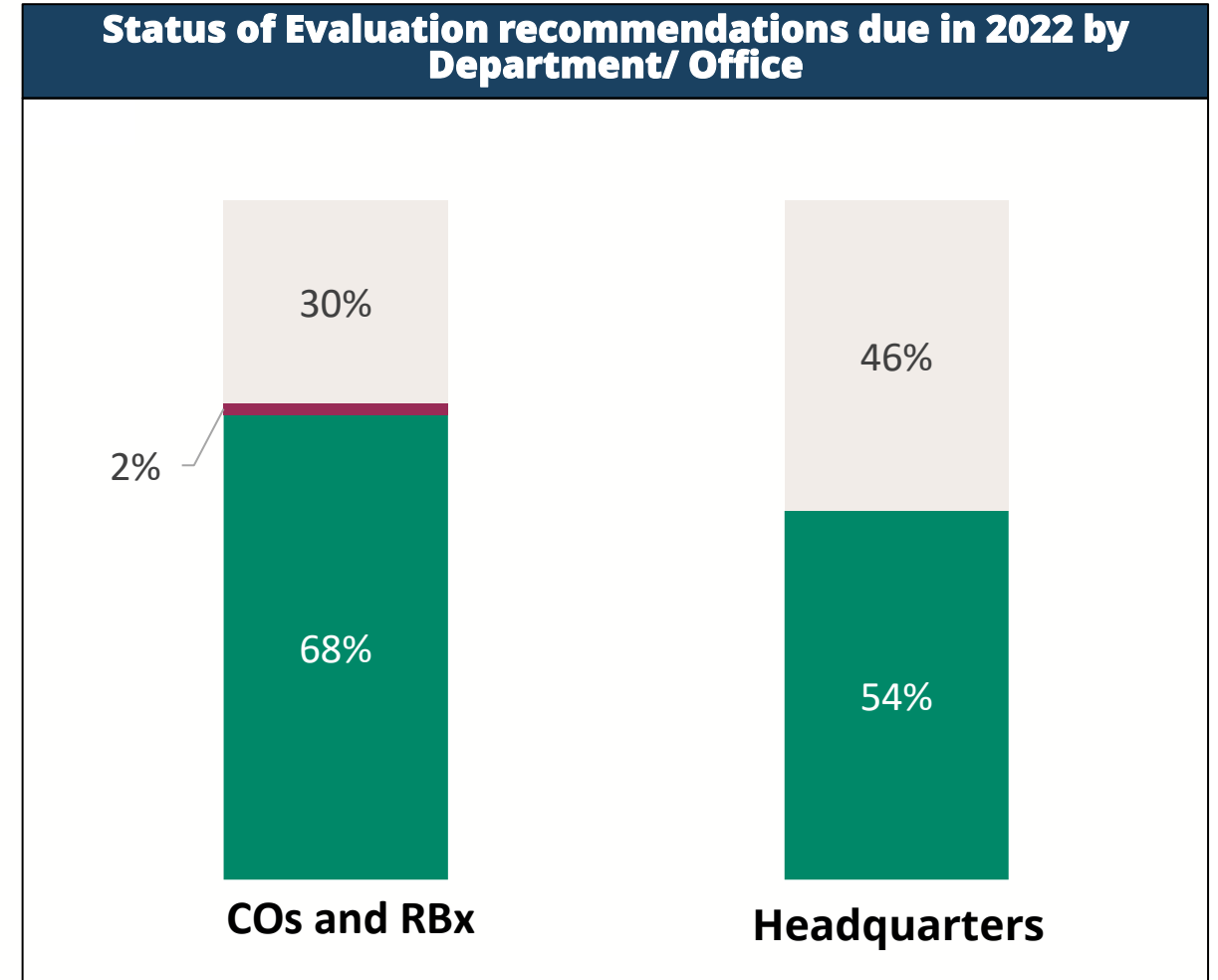
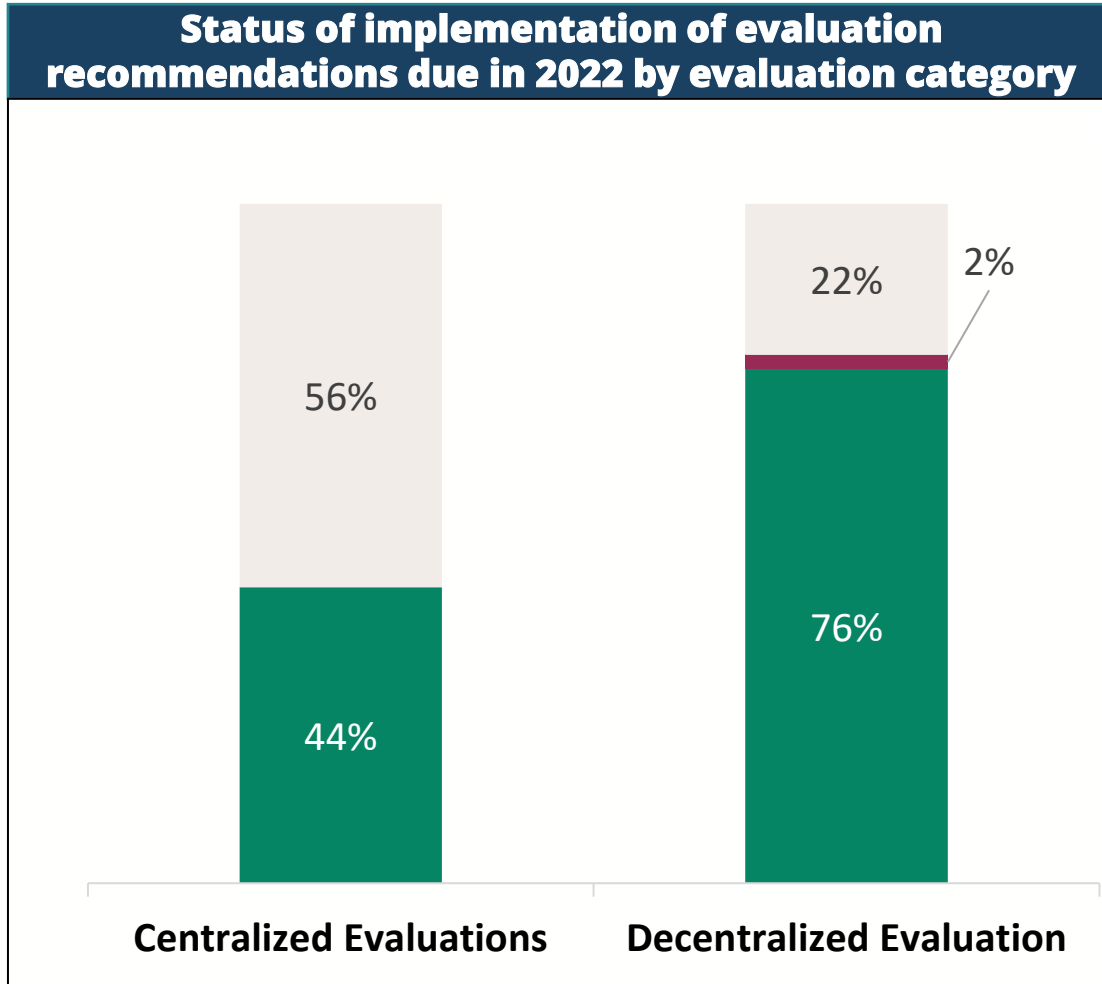
Status of implementation of evaluation recommendations and actions in 2022



- ❑ The overall implementation rate for the 206 recommendations that were due to be implemented in 2022 stood at 66 percent.

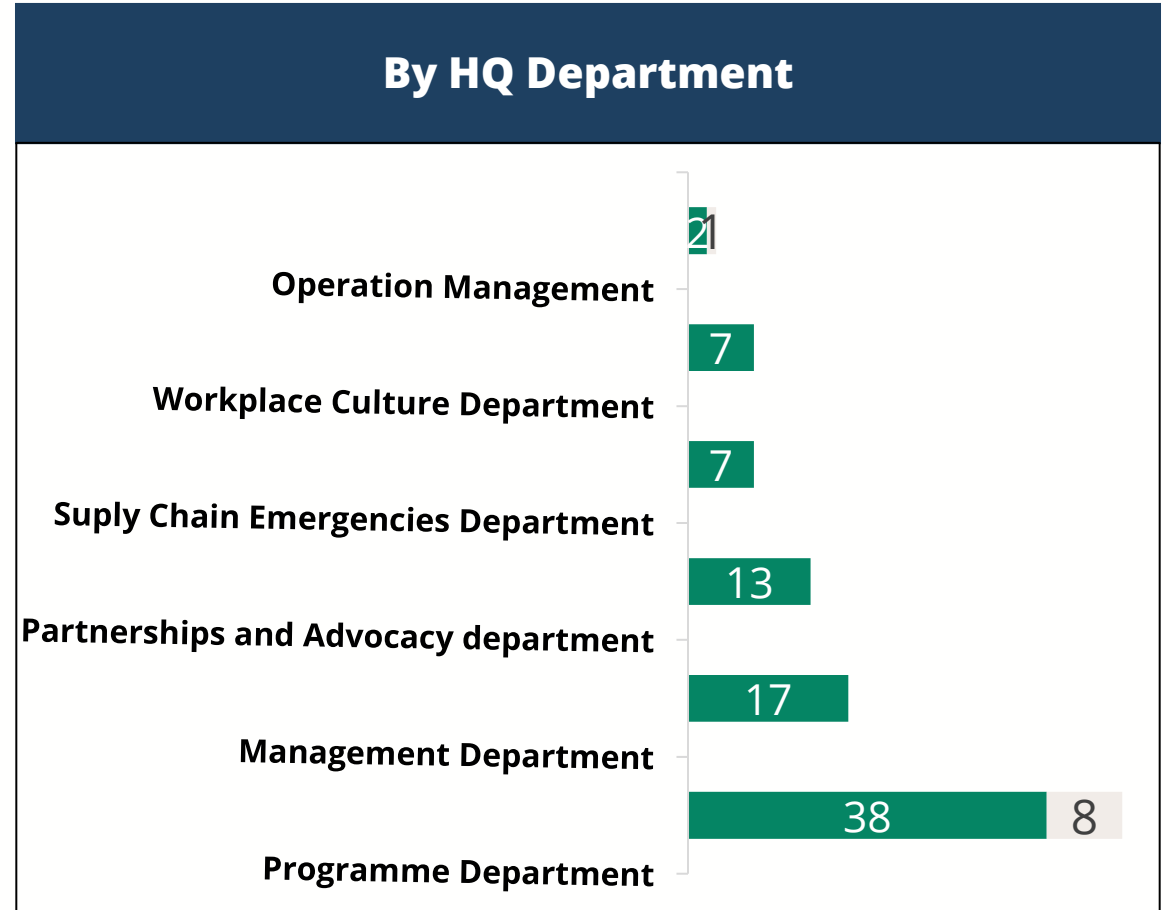
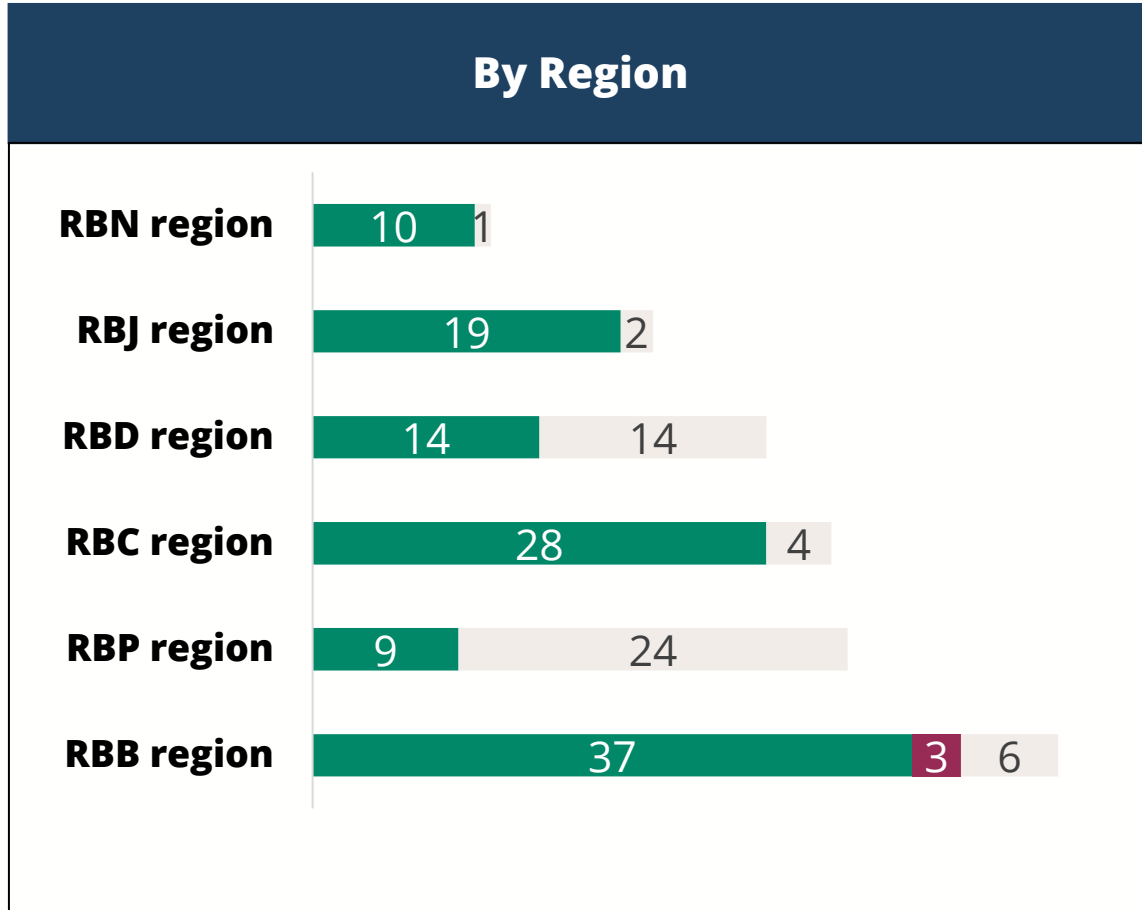
■ Implemented ■ Closed without implementation ■ Ongoing

Status of implementation of evaluation recommendations in 2022 by evaluation category and department or office



■ Implemented ■ Closed without implementation ■ Ongoing

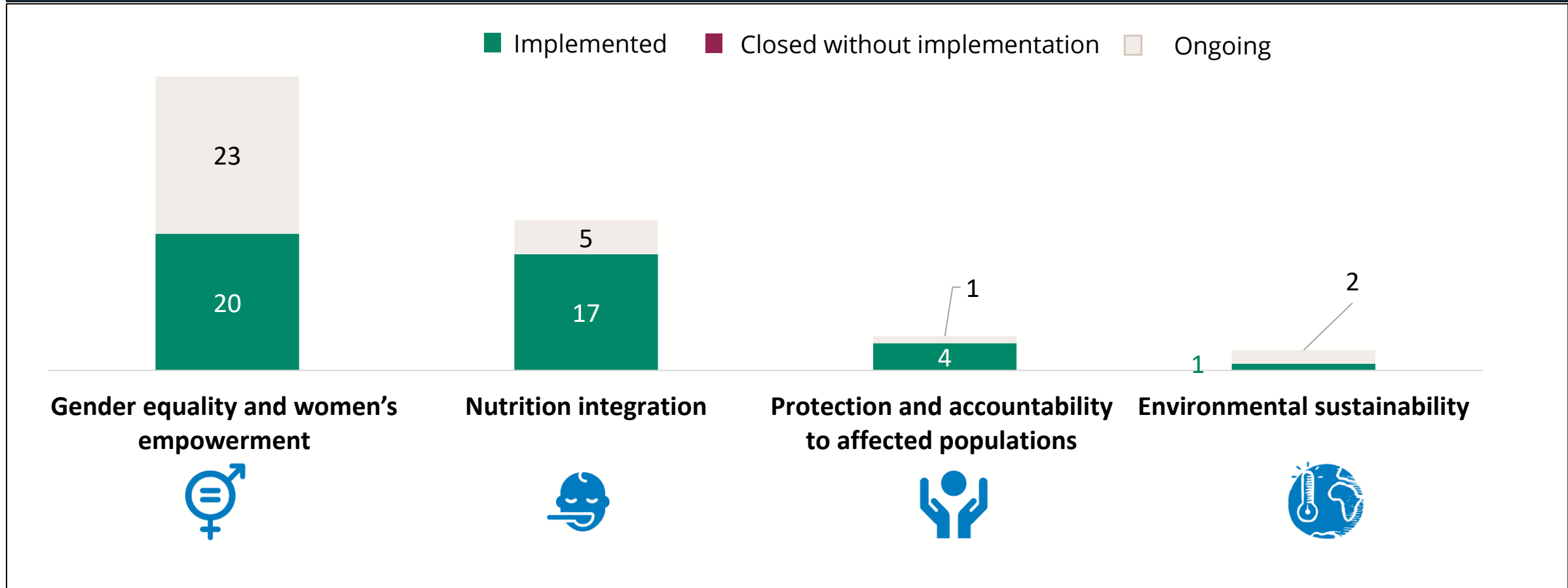
Status of implementation of evaluation recommendations in 2022 by region and HQ department



■ Implemented
 ■ Closed without implementation
 ■ Ongoing

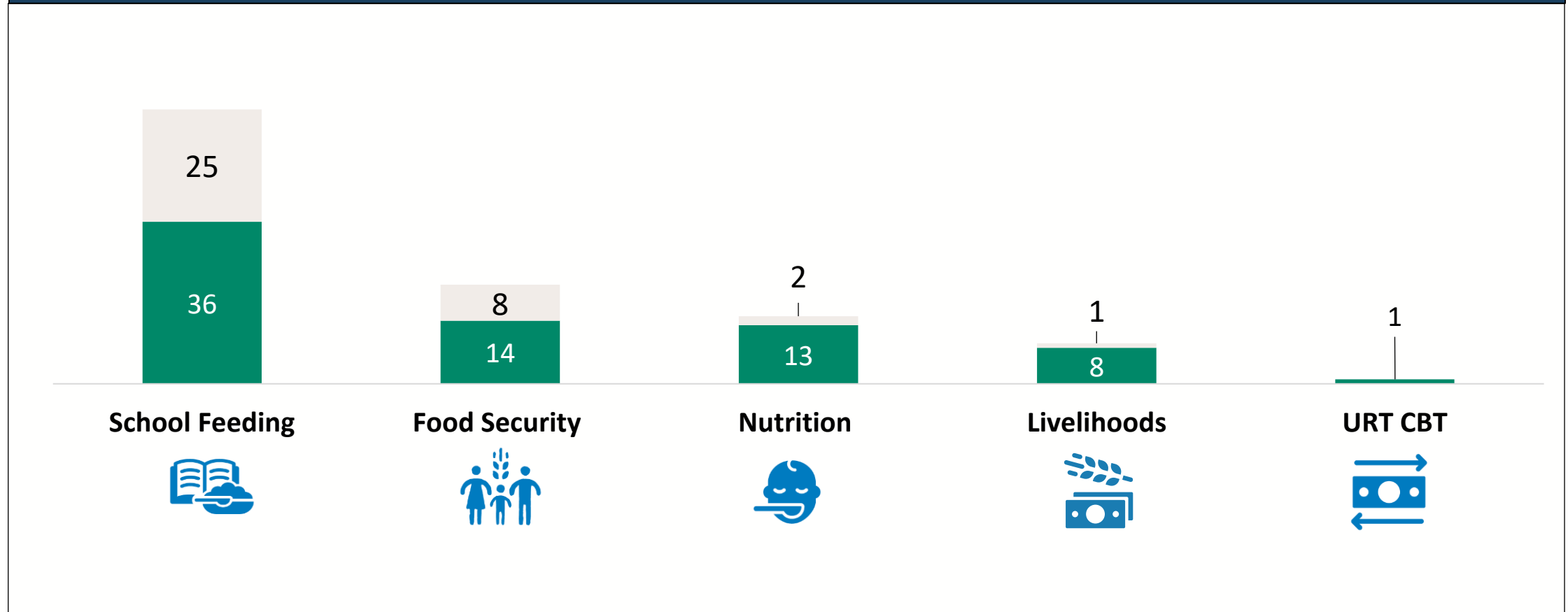
Status of implementation of evaluation recommendations in 2022 by cross-cutting priorities

Status of evaluation recommendations by cross cutting priority in 2022



Status of implementation of evaluation recommendations in 2022 by key programmatic areas

Status of evaluation recommendations in 2022 by key programmatic area



■ Implemented ■ Closed without implementation ■ Ongoing

Several variables affect recommendation implementation rates



Number of recommendations due in a given year that had been assigned to a region or HQ division

Number of actions required for closure of a given recommendation



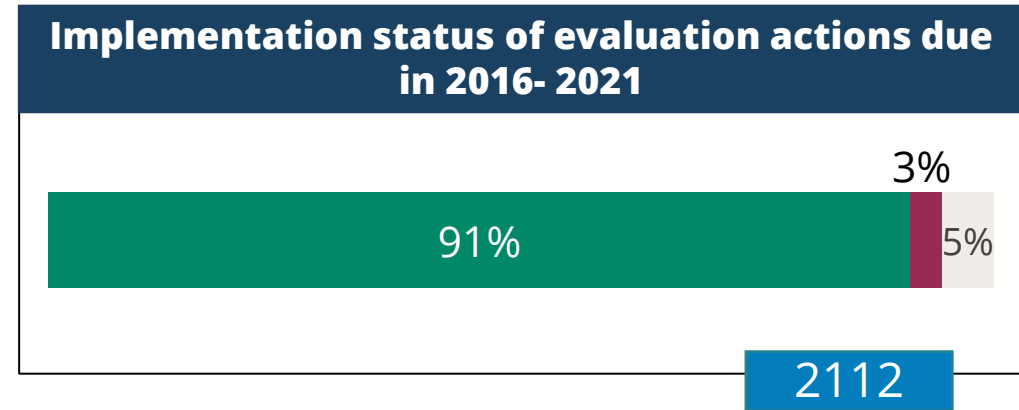
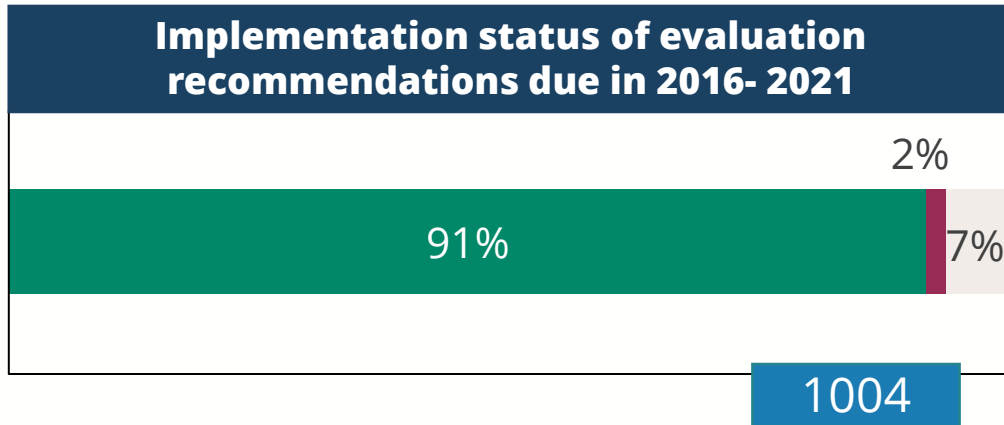
Lack of human resources available for coordination of closure of recommendations

Lack of financial resources for the implementation of a recommendation, leading divisions or regions to close without implementation



Evaluation recommendations of a strategic or normative nature often require more time and are more likely to go beyond their due date as compared to recommendations of an operational nature

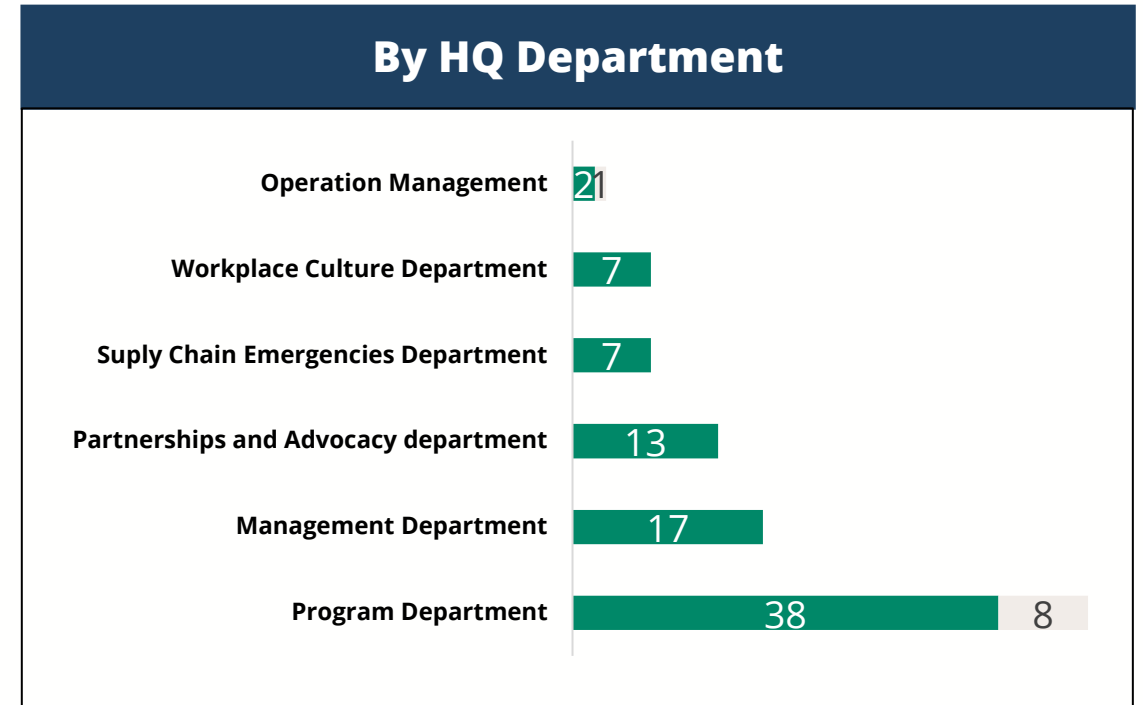
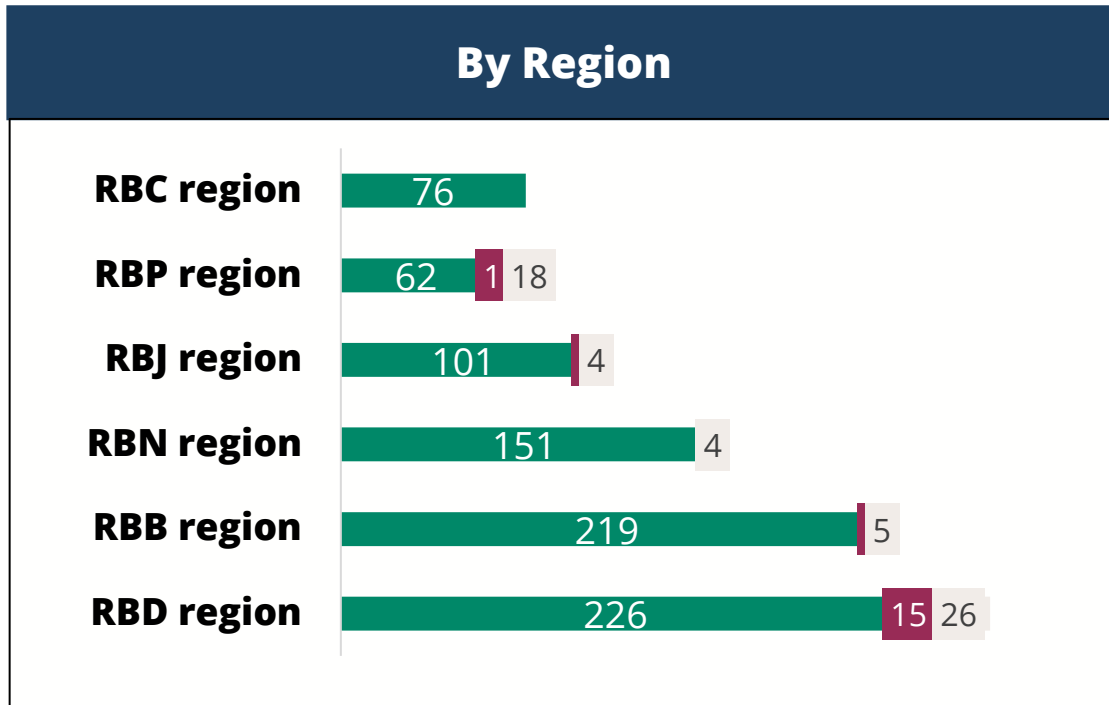
Status of implementation of evaluation recommendations and actions in 2016 to 2021



- 91 percent of the 1004 recommendations due to be implemented between 2016 and 2021 had been implemented

■ Implemented ■ Closed without implementation ■ Ongoing

Status of implementation of evaluation recommendations in 2016 to 2021



□ For the period 2020–2022, WFP reached an average implementation rate of 77 percent

■ Implemented ■ Closed without implementation ■ Ongoing