



# Country Strategic Plan MZ02 (2022-2026)

Mozambique Country Office  
Executive Board Annual Session June 2022



WFP  
World Food Programme

SAVING  
LIVES  
CHANGING  
LIVES

The logo for the World Food Programme (WFP) is displayed within a blue rectangular box. It features a white circular emblem with a globe and wheat stalks, surrounded by the text 'WFP' and 'World Food Programme'. Below the emblem, the slogan 'SAVING LIVES CHANGING LIVES' is written in white capital letters.

# LEARNING FROM THE PAST TO PREPARE FOR THE FUTURE



# LEARNING FROM THE PAST TO PREPARE FOR THE FUTURE



# LEARNING FROM THE PAST TO PREPARE FOR THE FUTURE

**CSP MZ02**

**Jul 2022 – Dec 2026**

**1.9M beneficiaries**

**USD 819.3M**



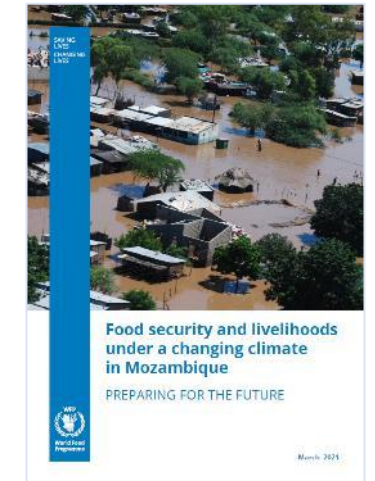
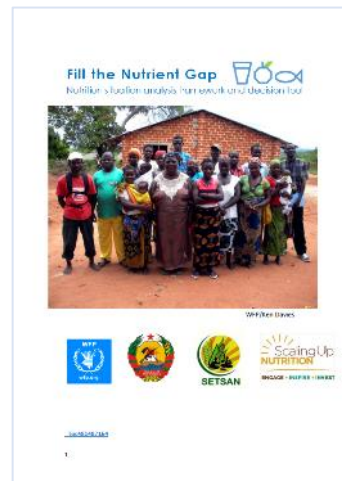
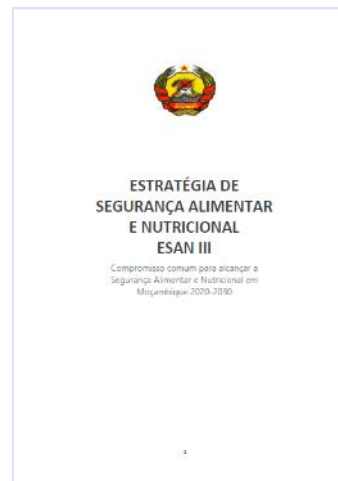
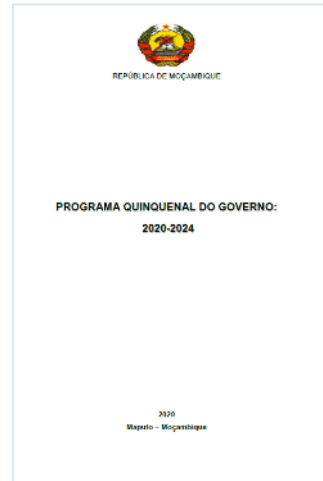
# STRATEGIC ALIGNMENT

## KEY CSP INPUTS

Broad consultation

Robust evidence

Strong alignment



# CSP (2017-2022) EVALUATION



# CSP (2017-2022) EVALUATION: MANAGEMENT RESPONSES

## KEY PROGRAMMATIC RECOMMENDATIONS

- ✓ Integrated programming, mainstreaming:
  - climate resilience
  - gender equality
  - women's empowerment



# CSP (2017-2022) EVALUATION: MANAGEMENT RESPONSES

## KEY PROGRAMMATIC RECOMMENDATIONS

- ✓ Integrated programming, mainstreaming:
  - climate resilience
  - gender equality
  - women's empowerment
- ✓ Champion H-D-P nexus





# CSP (2017-2022) EVALUATION: MANAGEMENT RESPONSES

## KEY PROGRAMMATIC RECOMMENDATIONS

- ✓ Integrated programming, mainstreaming:
  - climate resilience
  - gender equality
  - women's empowerment
- ✓ Champion H-D-P nexus
- ✓ Long-term vision: strengthening national capacity



# CSP (2017-2022) EVALUATION: MANAGEMENT RESPONSES

## KEY PROGRAMMATIC RECOMMENDATIONS

- ✓ Integrated programming, mainstreaming:
  - climate resilience
  - gender equality
  - women's empowerment
- ✓ Champion H-D-P nexus
- ✓ Long-term vision: strengthening national capacity
- ✓ Strengthen and diversify strategic partnerships



# CSP MZ02 - STRUCTURE



SO.1



SO.2



SO.3



SO.4



SO.5 & 6

***SAVING LIVES  
CHANGING LIVES***



# CSP MZ02 - STRUCTURE



SO.1

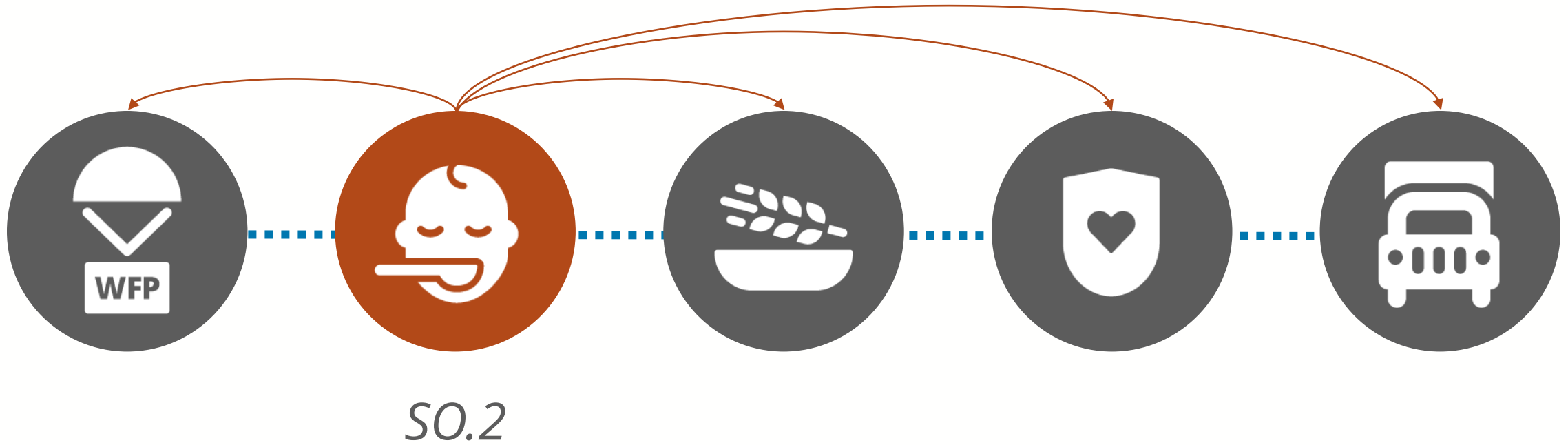
**CRISIS RESPONSE**



*Life-saving, nutritious support for the most at-risk before, during and after shocks*



# RISK-INFORMED PROGRAMMING = INTEGRATED PROGRAMMING



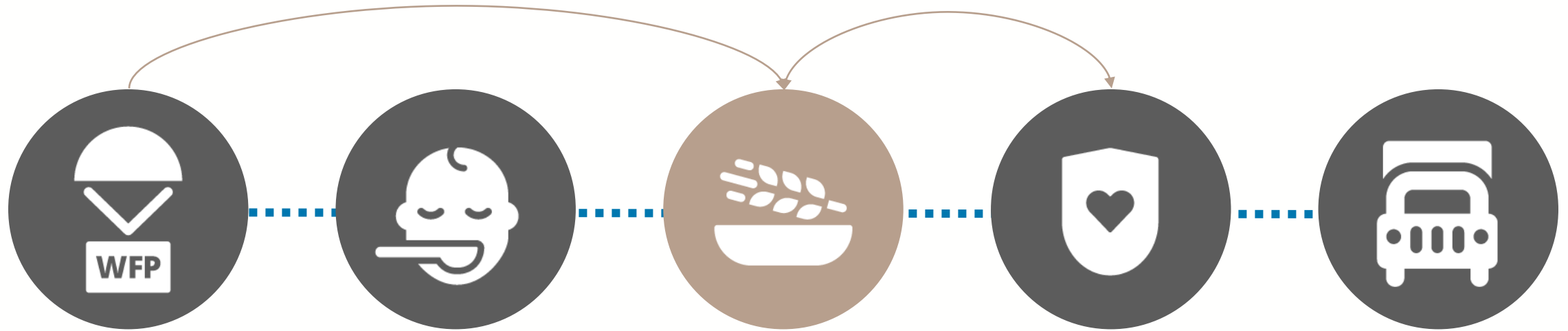
## **NUTRITION**



*Safe year-round access to adequate and nutritious food, and increased resilience for those most at-risk*



# CSP MZ02 - STRUCTURE



SO.3

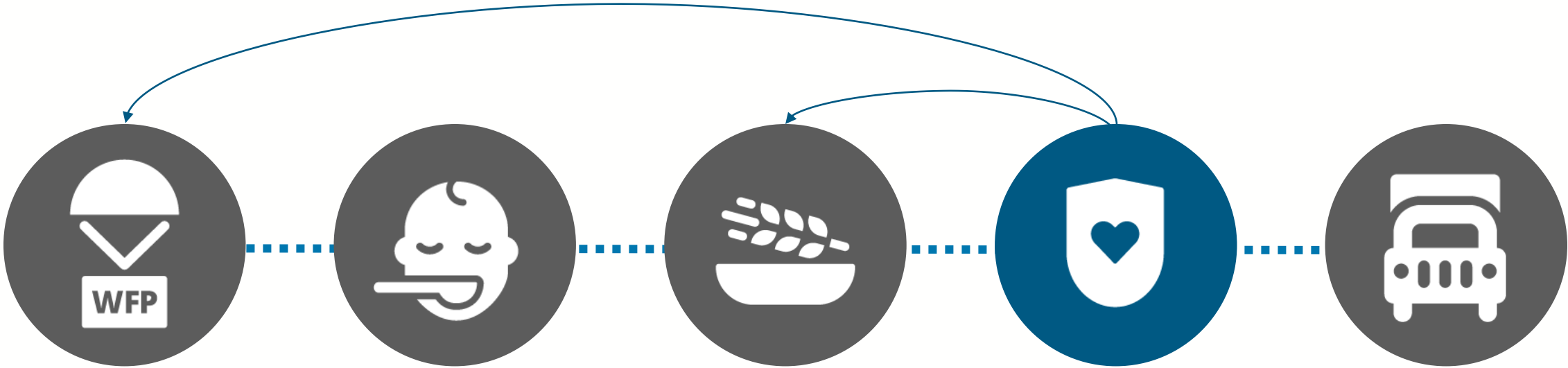
**SUSTAINABLE FOOD  
FOOD SYSTEMS**



*Improve adaptation & resilience to climate shocks and enhance livelihoods & productivity*

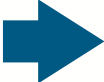


# CSP MZ02 - STRUCTURE



SO.4

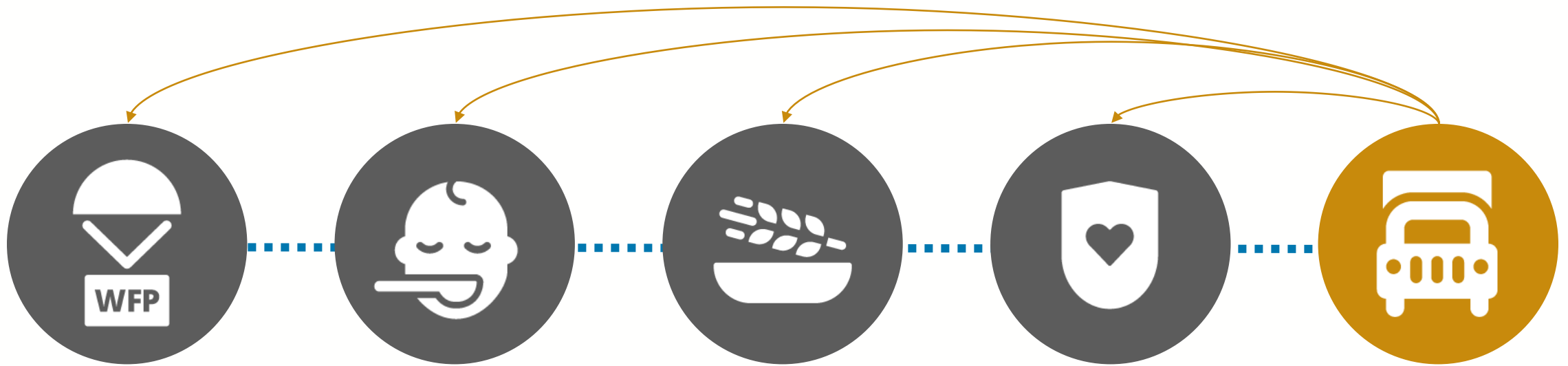
**STRENGTHENING  
INSTITUTIONAL  
CAPACITIES & SYSTEMS**



*Strengthen DRM and shock-responsive social protection systems & support the national school feeding programme*



# CSP MZ02 - STRUCTURE



SO.5 & 6

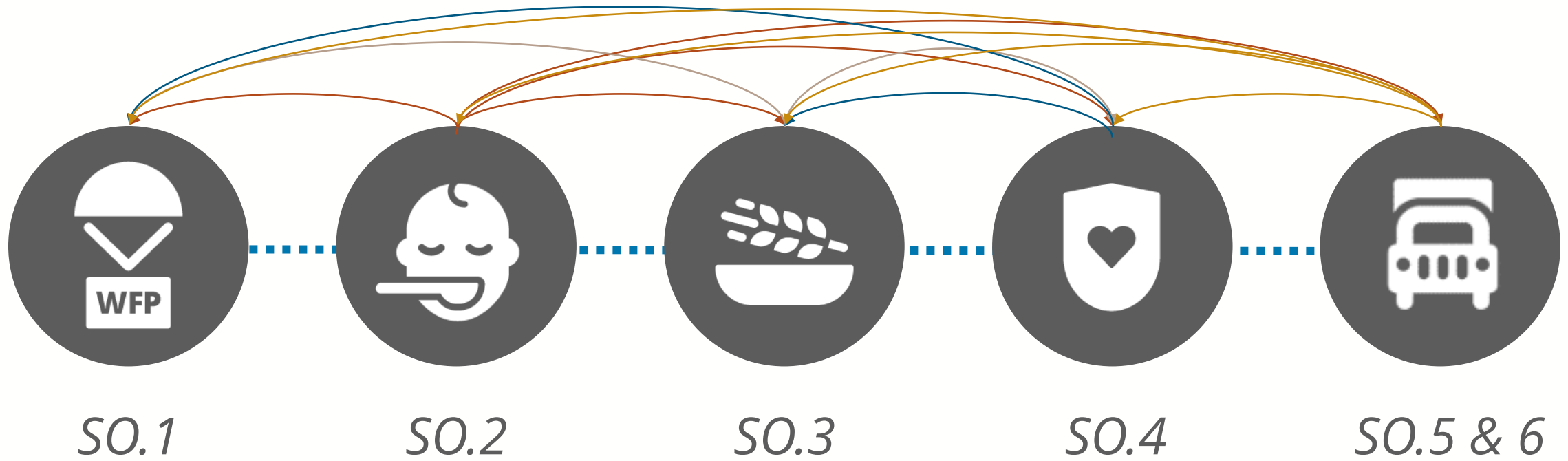
**SERVICE DELIVERY** ➔

*Essential air, cluster and on-demand services, to the humanitarian and development community.*





# RISK-INFORMED PROGRAMMING = INTEGRATED PROGRAMMING



*muito obrigado*



Programa  
Mundial  
para a  
Alimentaça

SALVAR  
VIDAS