

Briefing on Ethics

Executive Board Briefing

Georgia Shaver

Ethics Office Director, ad interim

Natalia Macdonald

Senior Advisor, PSEA

2022 April





World Food
Programme

SAVING
LIVES
CHANGING
LIVES

Part I – Ethics

2022 April

REPOSITIONING ETHICS IN AN ORGANIZATION OF 21,800 EMPLOYEES

- Clear and simple message defining the Ethics Office's outreach
- Vision and a plan of action to influence and engage
- Mapping exercise to identify offices with highest risks of ethical challenges
- Pilot proactive outreach to country offices
- Ethical decision-making tools / ethical decision model



Questions



Photo: WFP/ Annabel Symington



World Food
Programme

SAVING
LIVES
CHANGING
LIVES

Part II - Protection from Sexual Exploitation and Abuse (PSEA)

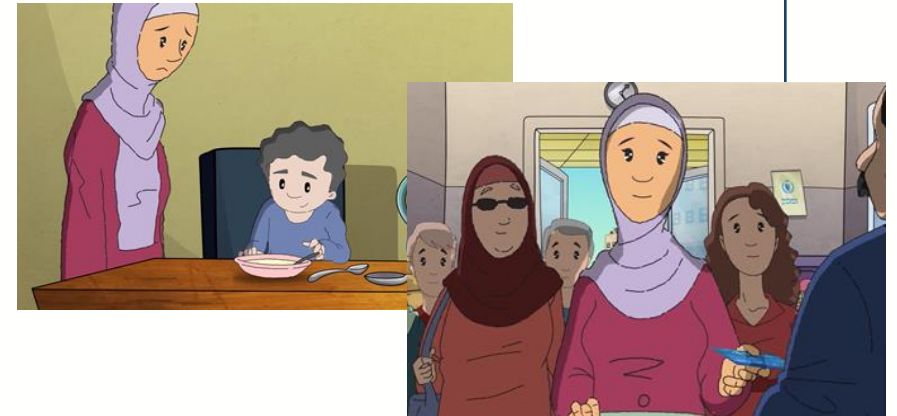
2022 April

SUPPORT TO COUNTRY OFFICES



- PSEA in urban contexts: **Myanmar and Zimbabwe Country Offices** - best practices for development of practical tools and guidance

- Education and outreach: **Palestine, Syria and Zimbabwe Country Offices** - beneficiary sensitisation material, visibility items, training sessions for staff and partners:
- Senior management engagement: **Yemen Country Office**



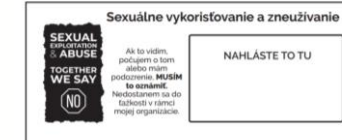
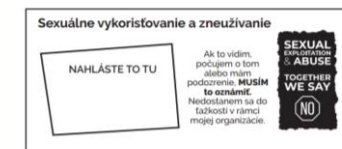
UN IMPLEMENTING PARTNER PSEA CAPACITY ASSESSMENT

A harmonized screening tool for partners developed to strengthen accountability and capacity of implementing/cooperating partners and avoid multiplication of processes.

- Recruitment of a PSEA/Partnerships consultant to support the roll-out of the PSEA Capacity Assessment
- Pilot of the roll-out of the PSEA Capacity Assessment in six country offices: Chad, DRC, Ethiopia, Lebanon, Pakistan and Venezuela

ADDITIONAL UPDATES

- **PSEA Digitalization project:** leverage the use of technology to enhance a victim-centered approach through safe reporting and access to assistance services, and improve information analysis to facilitate evidence-based prevention and mitigation of SEA
- **PSEA support to the Ukraine operations**



Sample of outreach materials provided in local languages



Questions



Photo: WFP/ Annabel Symington