

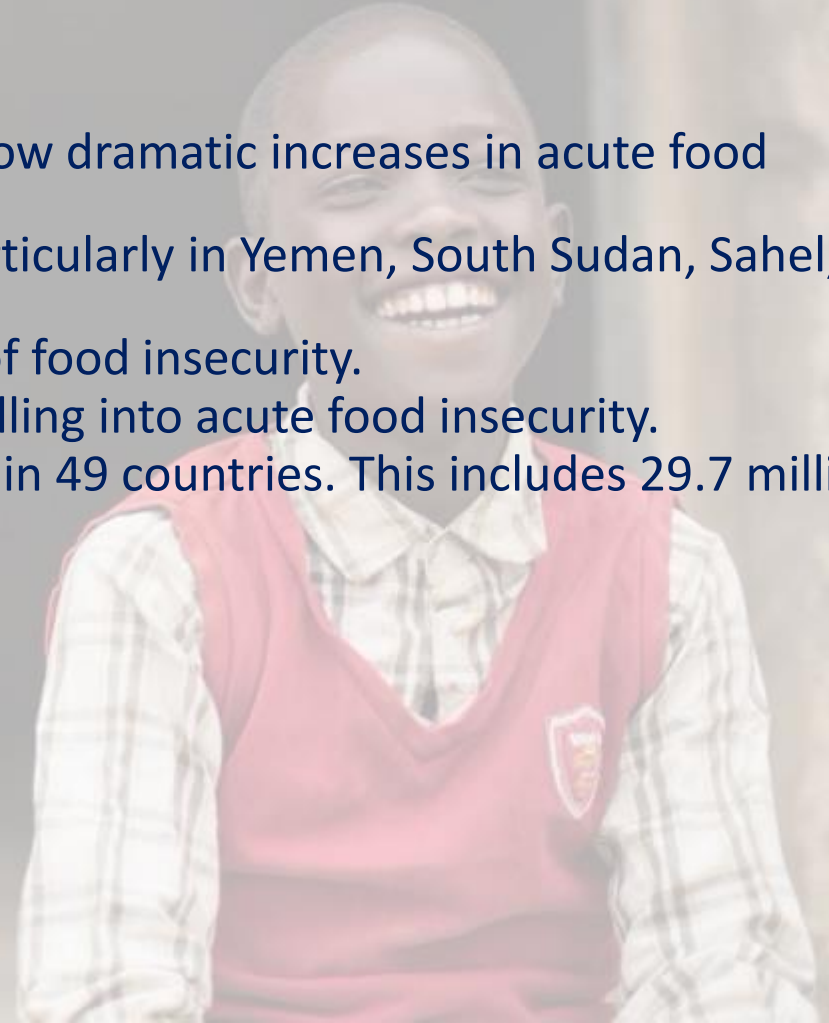
COVID-19 Update

5 October 2020



Global Situation Update

- The global economy is expected to recover to pre-coronavirus levels only in 2022.
- In Latin America, COVID-19 has caused the worst recession in a century.
- The latest **Integrated Phase Classification (IPC)** assessments show dramatic increases in acute food insecurity across the globe.
 - COVID-19 is combining with conflict and climate shocks particularly in Yemen, South Sudan, Sahel, North Eastern Nigeria.
 - In the DRC nearly 22 million people are facing crisis levels of food insecurity.
 - Burkina Faso has seen a tripling in the number of people falling into acute food insecurity.
 - There are 146.9 million people in IPC Phase three or worse in 49 countries. This includes 29.7 million people in IPC phase four in 36 countries.



Updated Global Response Plan

Highlights

- WFP scaled up to reach **85 million people** in the first half of 2020
 - Scaled up cash-based transfers: **USD 1.15 billion** across 64 country offices
 - Take-home rations for **seven million** school children
 - Increased local purchases: **553,000mt** of food sourced in countries of operation
 - Over half WFP operations expanding direct assistance in urban areas
 - Supporting around **50 governments** with their social protection interventions
 - More than **500 staff** were deployed to the field to relieve staff and support operations
 - WFP allocated **USD 70 million** to 44 emergency requests over the course of the COVID-19 response
- 

Ongoing Challenges



Security situations becoming more difficult in some countries resulting in violence and access constraints

- Concerns: Nigeria, Iraq, Syrian Arab Republic, Afghanistan, Mozambique, Sahel, Sudan, South Sudan, Libya, DRC
- 200 violent events on aid workers across 30 countries (Jan 2019 – July 2020)



Supply Chain

- Restricted movement, lockdowns and quarantines have led to longer processing times and reduced capacity at ports and border crossings
- Challenges in securing the pipeline of specialized nutrition products in countries such as Pakistan, Myanmar, DRC and Afghanistan



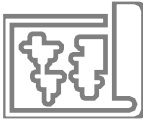
Funding

- The pace and level of contributions have not kept up with growing needs
- Since the June Global Response Plan **USD 1.7 billion has been received**
- Funding disparities remain with smaller country offices receiving very low levels of support
- WFP forced to reduce food or cash transfers by up to 30% for over 2.7 million refugees in Ethiopia, Uganda, Kenya, South Sudan and Djibouti

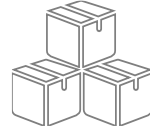
Needs-based requirements for the rest of 2020 are almost double the forecasted contributions

An additional USD 5.1 billion is required to meet needs over the next six months

GLOBAL DISPATCHES THROUGH WFP HUBS (BSP, UNHRD, FREE TO USER)



169
countries reached

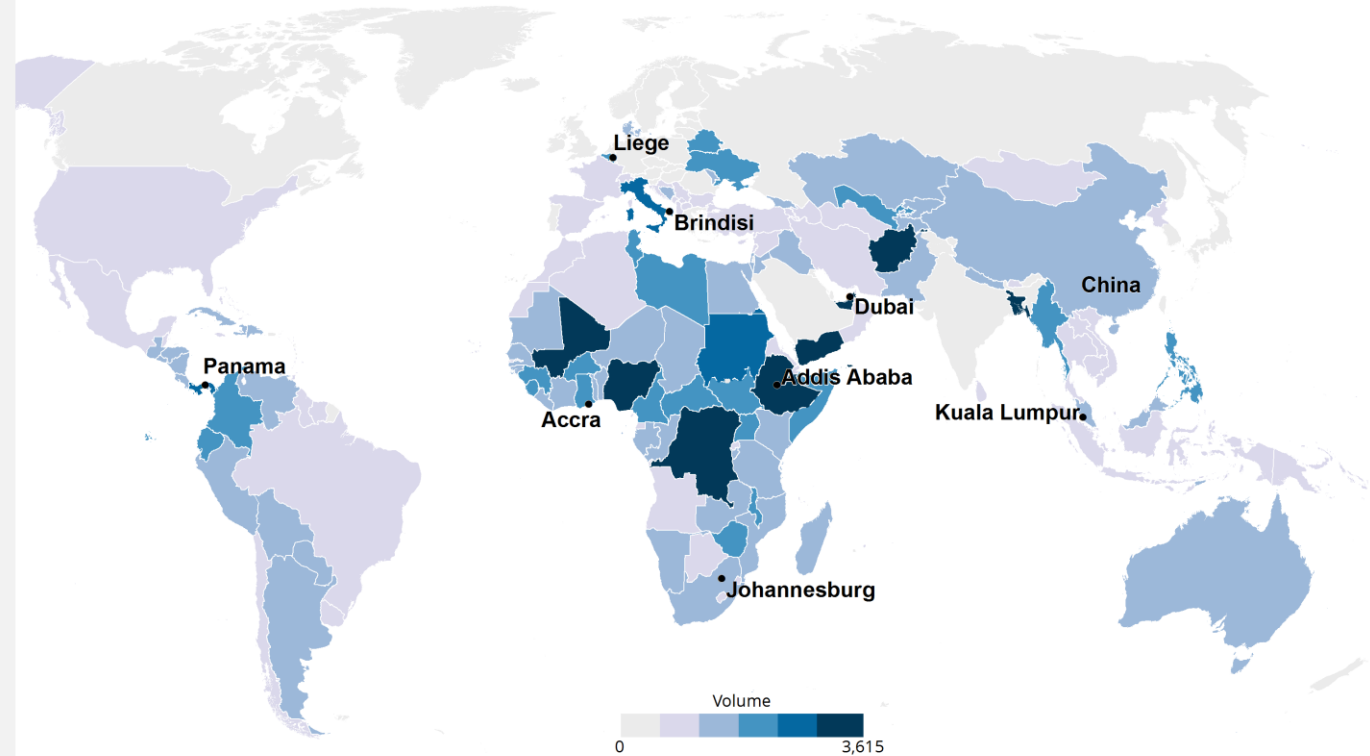
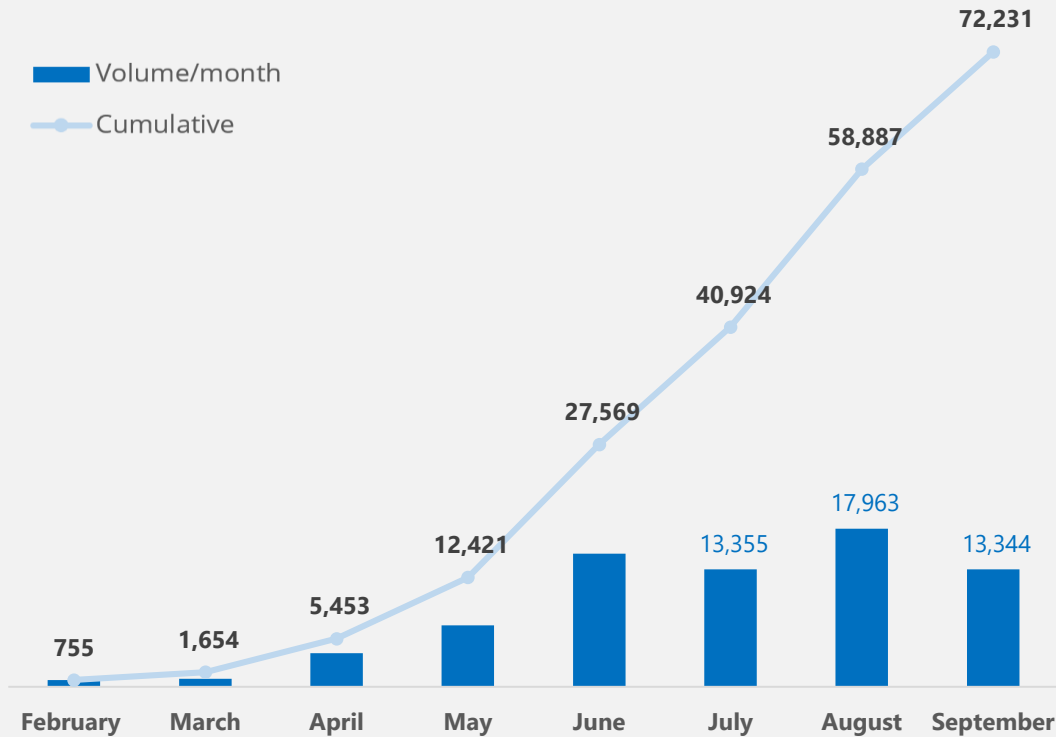


72,231 m³
dispatched



62 organizations
used WFP's cargo services

Cargo Dispatches (m³): BSP, UNHRD, Free to User



Volumes are inclusive of cargo in transit and delivered

Enabling the Humanitarian and Health Response

- Thanks to donors WFP has provided free-to-user services to the humanitarian and health community for six months and is continuing to do so based on **demand and funding**.
- Airfreight rates are stabilizing and commercial options are becoming available.
- WFP is reviewing the need and demand with partners and is preparing to **phase-out the Common Services before the end of the year**.



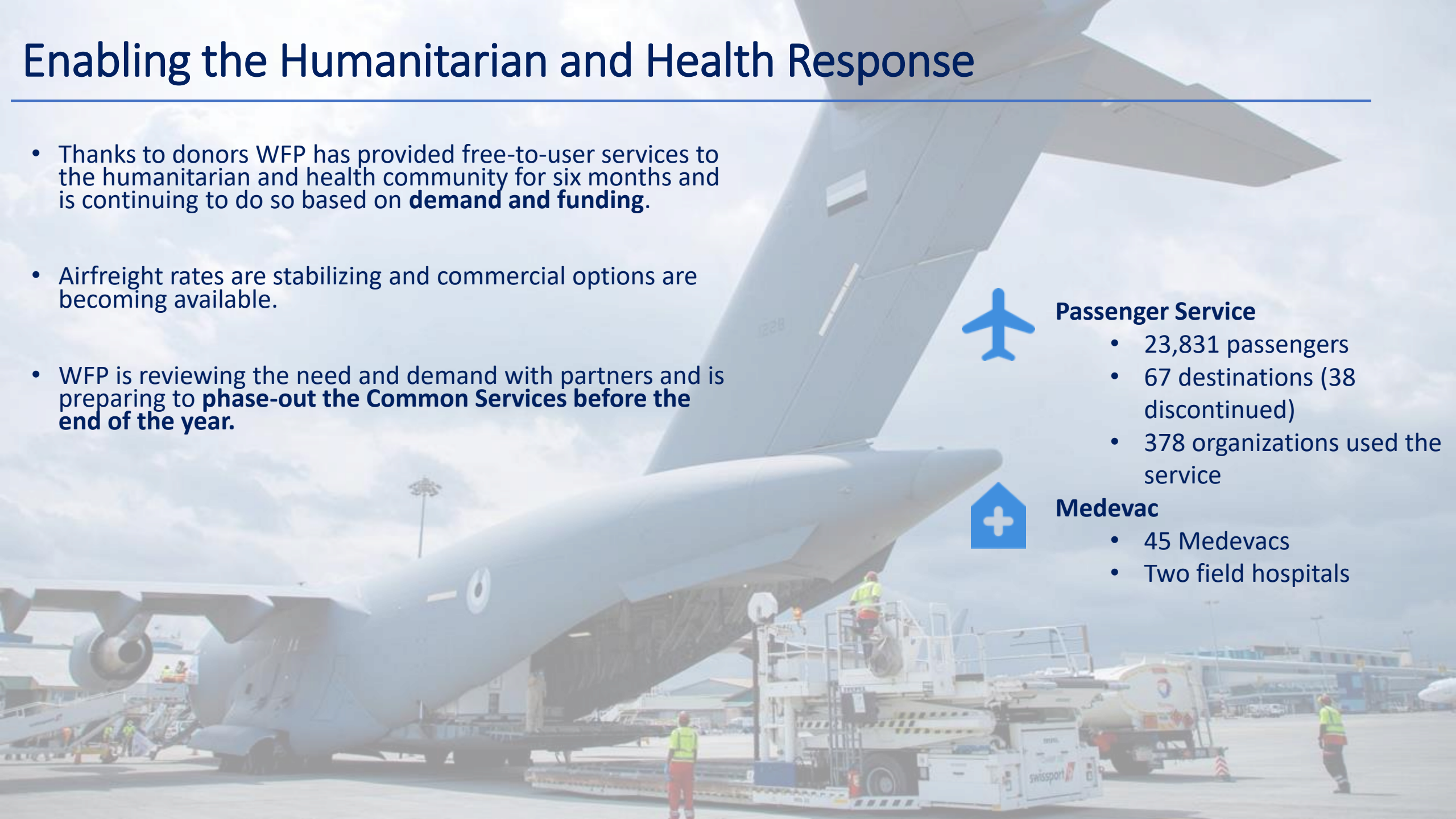
Passenger Service

- 23,831 passengers
- 67 destinations (38 discontinued)
- 378 organizations used the service



Medevac

- 45 Medevacs
- Two field hospitals



Top Countries of Concern: Corporate Alert System September 2020

Outlook (September-December 2020)

