

# WFP Security Division

On the road to Zero Hunger through Safety and Security



---

**SECURITY STARTS WITH YOU**



**1**

**Security Context**

**2**

**How we support  
Operations**

**3**

**SEC way forward**



**SECURITY STARTS WITH YOU**



# The United Nations System

## UN PRINCIPAL ORGANS

**GENERAL ASSEMBLY**

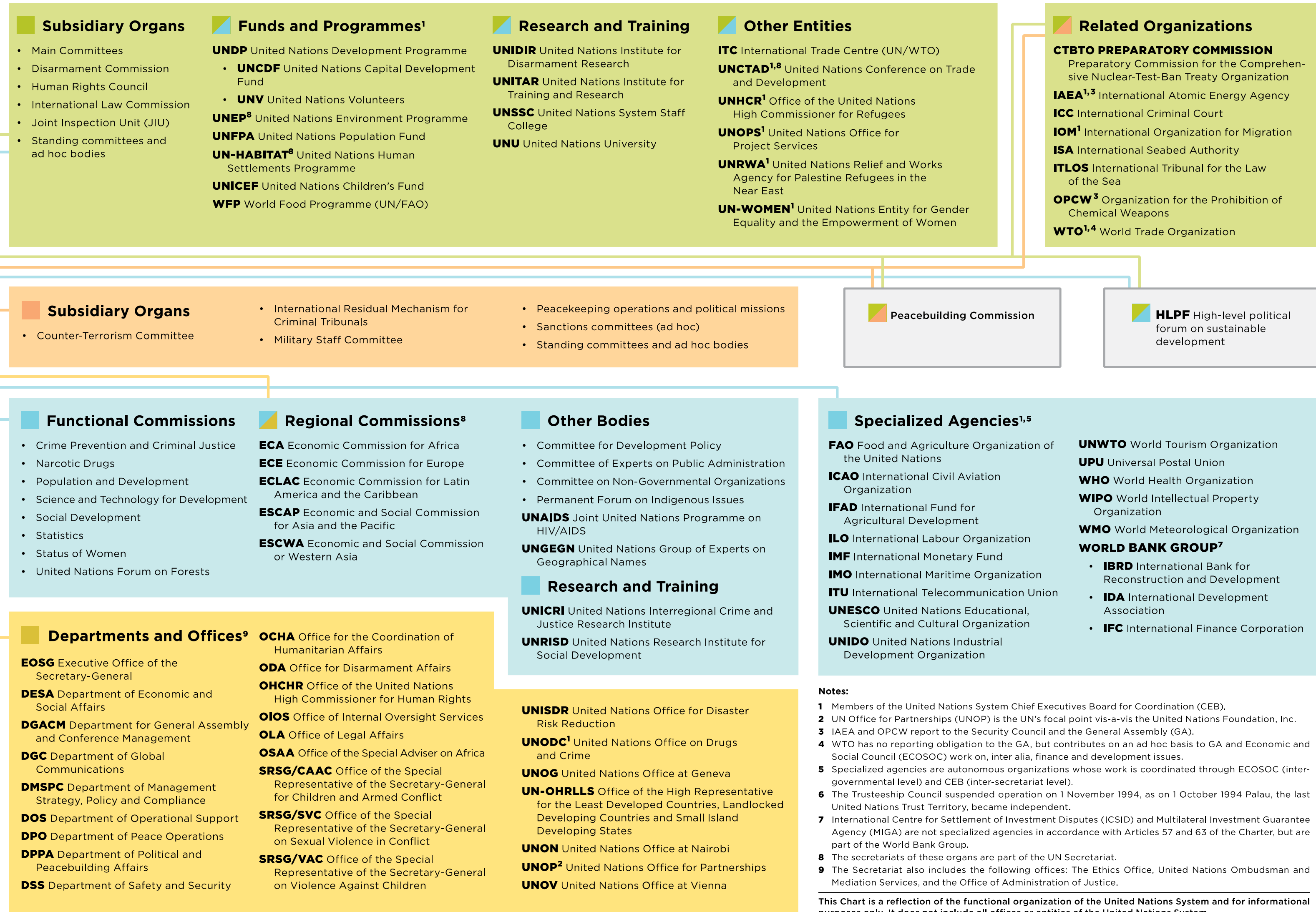
**SECURITY COUNCIL**

**ECONOMIC AND SOCIAL COUNCIL**

**SECRETARIAT**

**INTERNATIONAL COURT OF JUSTICE**

**TRUSTEESHIP COUNCIL<sup>6</sup>**

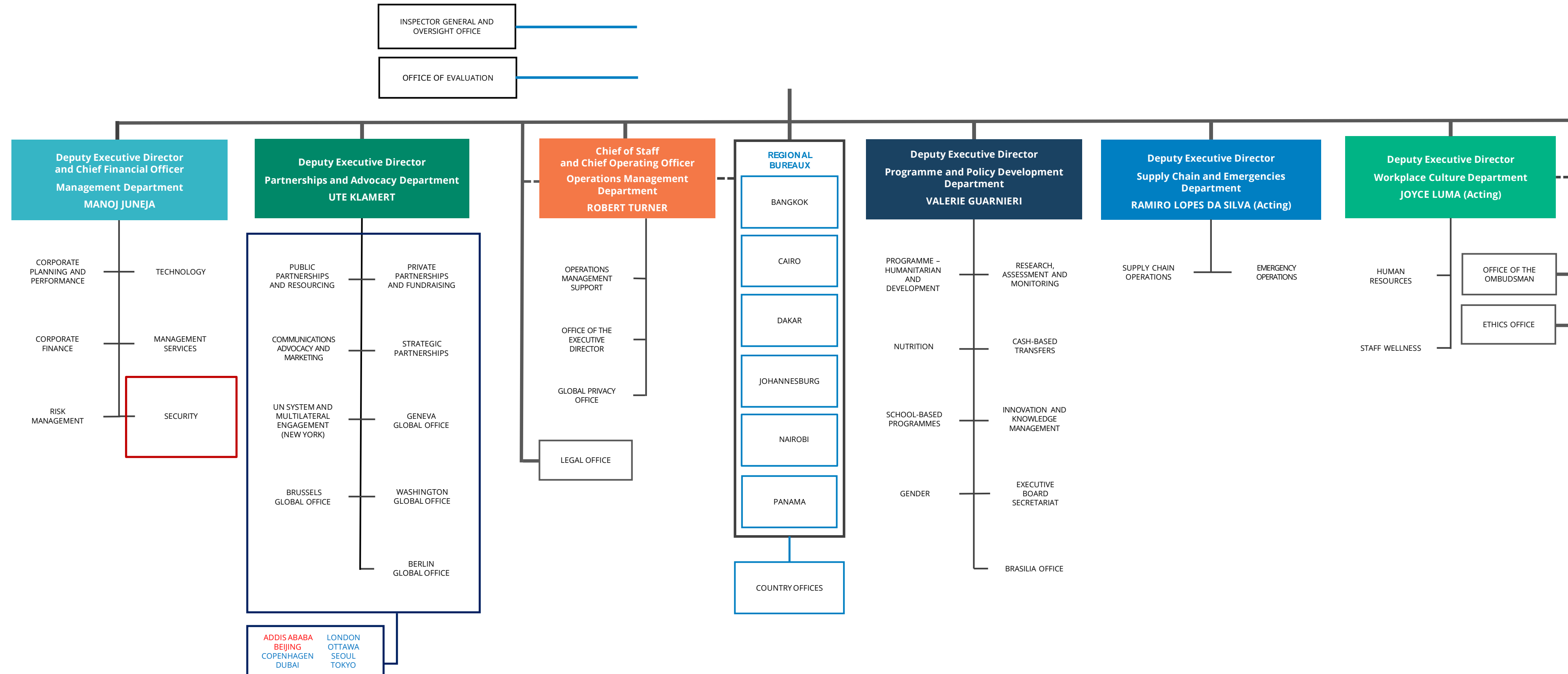


© 2019 United Nations. All rights reserved worldwide

Published by the United Nations Department of Global Communications 18-00159-1 January 2019

# WFP ORGANIGRAM 2022

## EXECUTIVE BOARD



ADDIS ABABA BEIJING COPENHAGEN DUBAI LONDON OTTAWA SEOUL TOKYO

Reporting to Public Partnerships and Resourcing  
Reporting to Strategic Partnerships

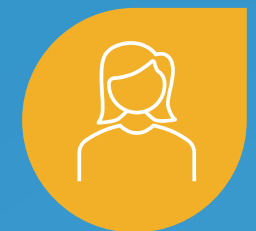
# WFP SECURITY PRESENCE

RBP	19 personnel	RBJ	22 personnel
RBC	107 personnel	RBN	165 personnel
RBD	77 personnel	RBB	34 personnel

## HQ & Regional Bureaux



**519** Personnel globally  
**149** International  
**370** National  
**127** Security Professionals



**93** Female personnel  
**30% increased in the last 3 years**

- Regional Security Officers (including other security personnel based in the region)
- Field Security Officers (including LSAs)
- Stand Alone LSAs
- Security Focal Points



SECURITY STARTS WITH YOU

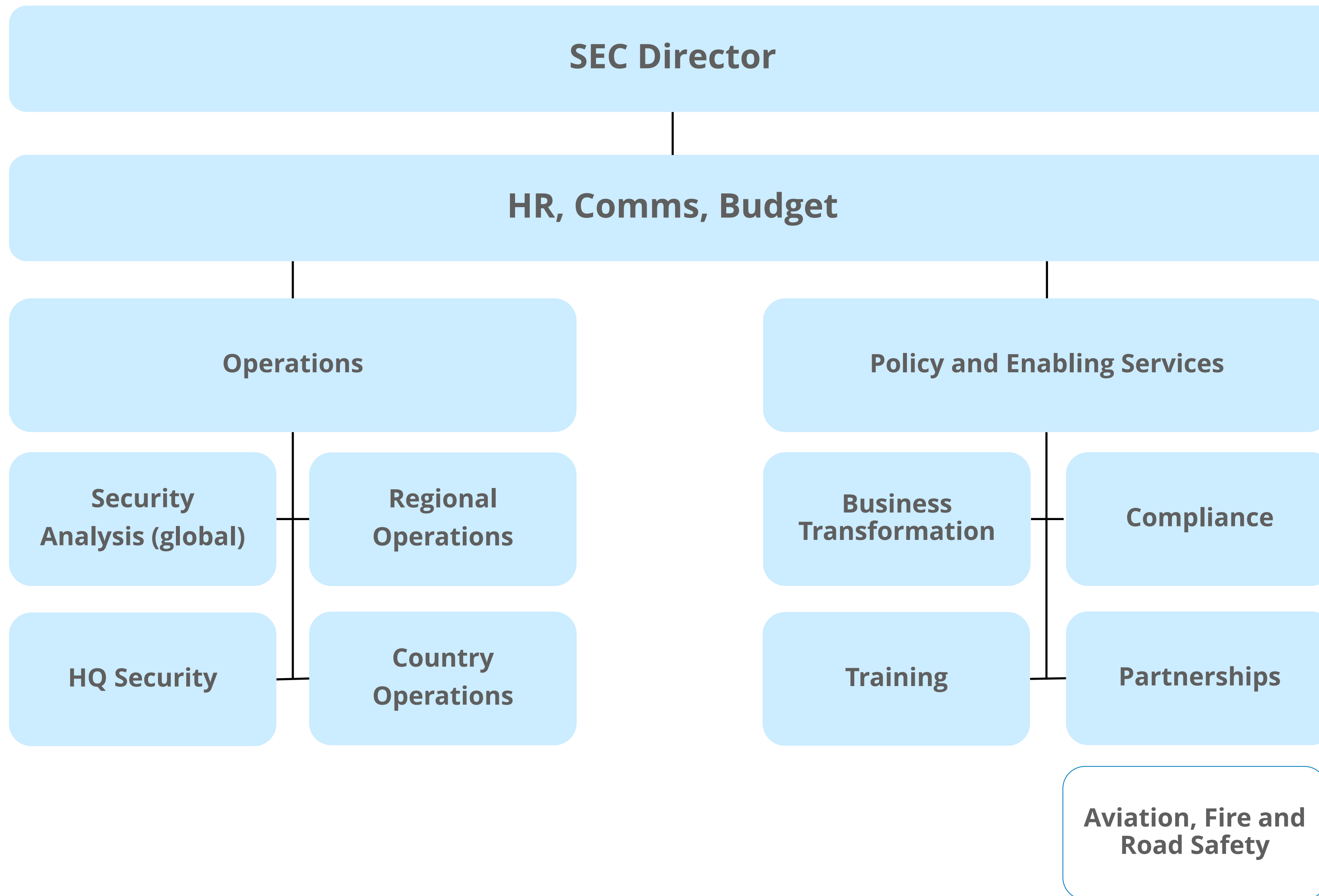
# WHAT WE DO

Ensuring security and safety of WFP  
personnel and operations



SECURITY STARTS WITH YOU

# How we support WFP



# How we support WFP

## Emergency Response (SAVING LIVES)



- Deployment in support of large operations
- Natural disaster response
- Security advice in engineering projects
- Assistance in serious & critical incidents

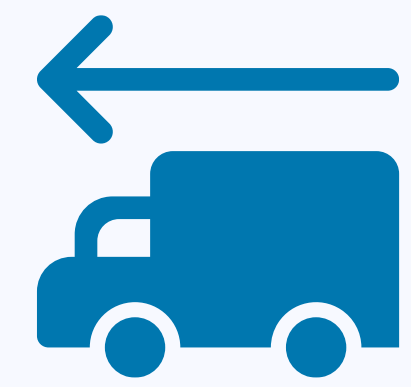


# How we support WFP

## Preparedness and Prevention (CHANGING LIVES)



- Enabling our personnel to prepare for emergencies with:
- Security training (Woman SAT, SSAFE, Crisis Management, etc.)
- KPIs identified and high levels of compliance maintained
- Being partners of choice for civil society, IASMN, NGOs and CPs
- Forward-looking analysis contributing to early action



## SECURITY

- UN Security data
- Restricted Areas
- Actor Mapping
- Incident Data
- Acceptance Mapping
- Contingency planning details

1

## CONTEXTUAL UNDERSTANDING / COMMON OPERATING PICTURE

### EMERGENCIES

Government engagement  
(National & Regional)

### PROGRAMME

Food security  
Programme criticality  
Programme delivery

### SUPPLY CHAIN

Routes  
WFP & partner facilities  
Bureaucratic, Physical access  
& climate constraints

# SECURITY ENGAGEMENT & ACCESS NEGOTIATION

2

## Internal engagement & negotiations:

- Security formulation of security guidelines
- Integration of acceptance as a risk management measure
- Programme Criticality & SRM

## External Relationship building:

- Local Security Actors
- Access Influencers
- Advise on most effective points of engagement
- Direct high-level engagement



# OPERATIONS FACILITATION

3

**Cooperation**

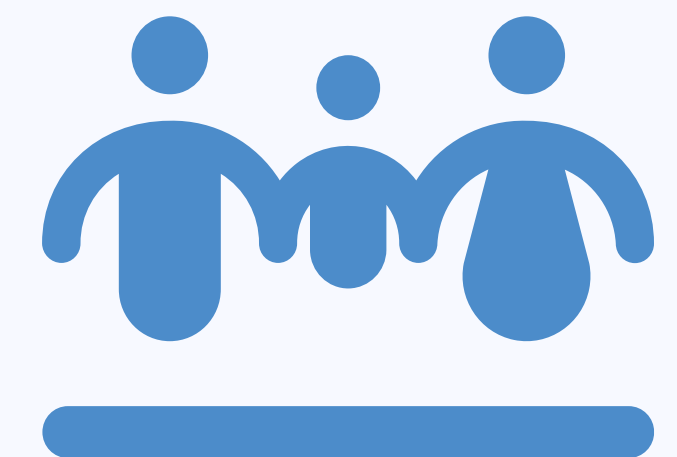
Access Team & cross functional coordination

**Engagement**

Initial/Re-engagement – joint assessment missions or proxy data collector

**SRM**

Security Risk Management (from planning to execution)



# How we are evolving

We are moving forward adjusting, digitalizing and partnering with non-traditional entities

# Evolving to better enable operations

01

Security division adapting to evolving needs

02

Attract and retain diverse profiles, reducing gender gap

03

Focus on emotional intelligence and soft skills to foster culture change



# Technological Trend for Security in a Humanitarian Organization

## The Main Strategic Pillars driving the Digital Evolution of the Security Division

COLLABORATION

DATA DRIVEN

EFFICIENCY

Technological  
Enablers

Technological  
Enablers

Technological  
Enablers

- Knowledge Management Portal
- SOP Toolkit
- SEC Workplan

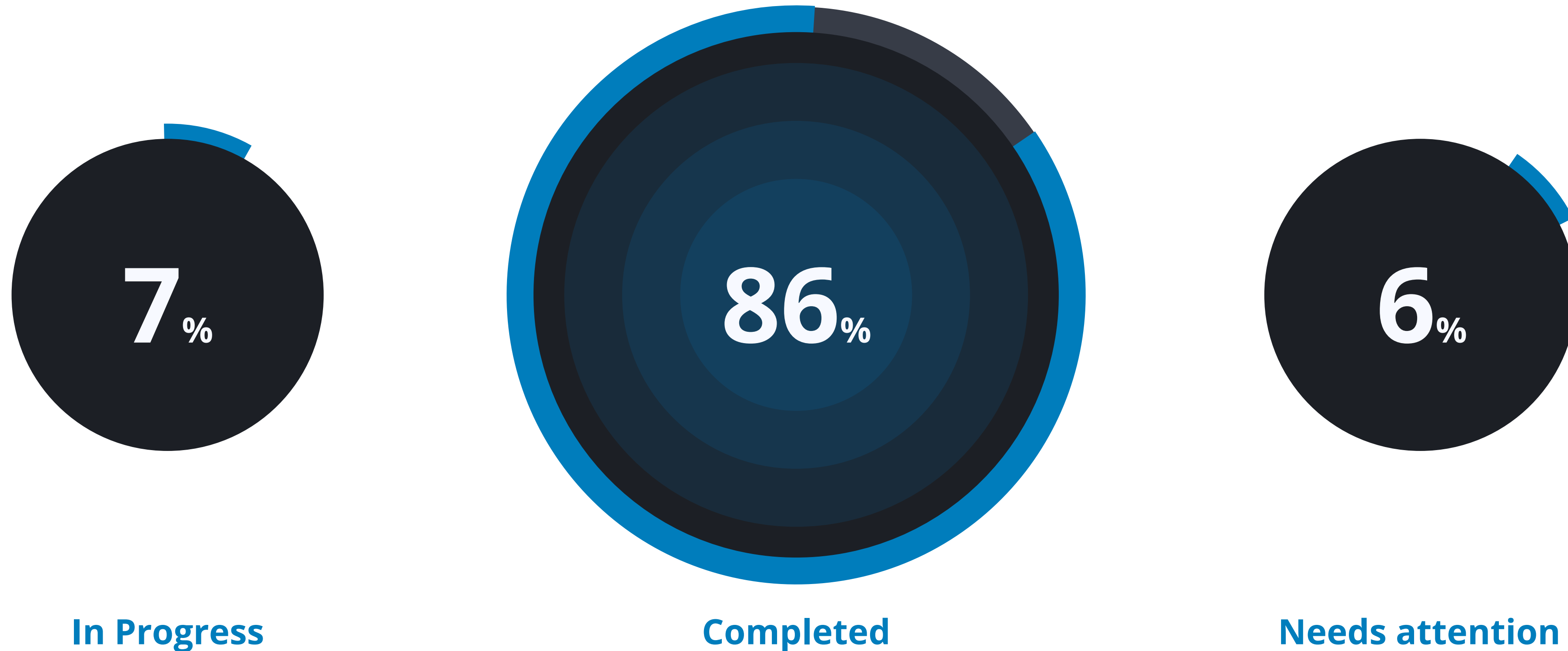
- Reporting & Dashboards
- AI and Predictive Analysis Tools

- Security Personnel List
- eTA
- Process MAP
- Automation Opportunities

# Based on the strong adherence to rules and procedures

## Compliance Framework

Assurance Statements 2022 : Countries 53 Offices 670



11,713 Total number of recommendations



# Security Partnerships

## WFP Security is a partner of choice for:

- Broader INGO community and inter-agency fora
- UN Security Management System (UNSMS)
- Rome-based Agencies (RBA) collaboration
- Non-traditional partners (military, academia, etc.)

## How do we collaborate?

- WFP operational requirements considered
- Partner deployments, including security coverage
- Understanding needs and supporting acceptance initiatives



A blue-tinted photograph of a helicopter in flight over a field. In the foreground, a person is seen from behind, wearing a backpack and pointing towards the helicopter. Another person is visible in the distance, also with a backpack. The scene is set in a grassy field under a clear sky.

# THANK YOU!

We're here to help!  
[WFP.Security@wfp.org](mailto:WFP.Security@wfp.org)