



World Food Programme



# Introduction to WFP Supply Chain

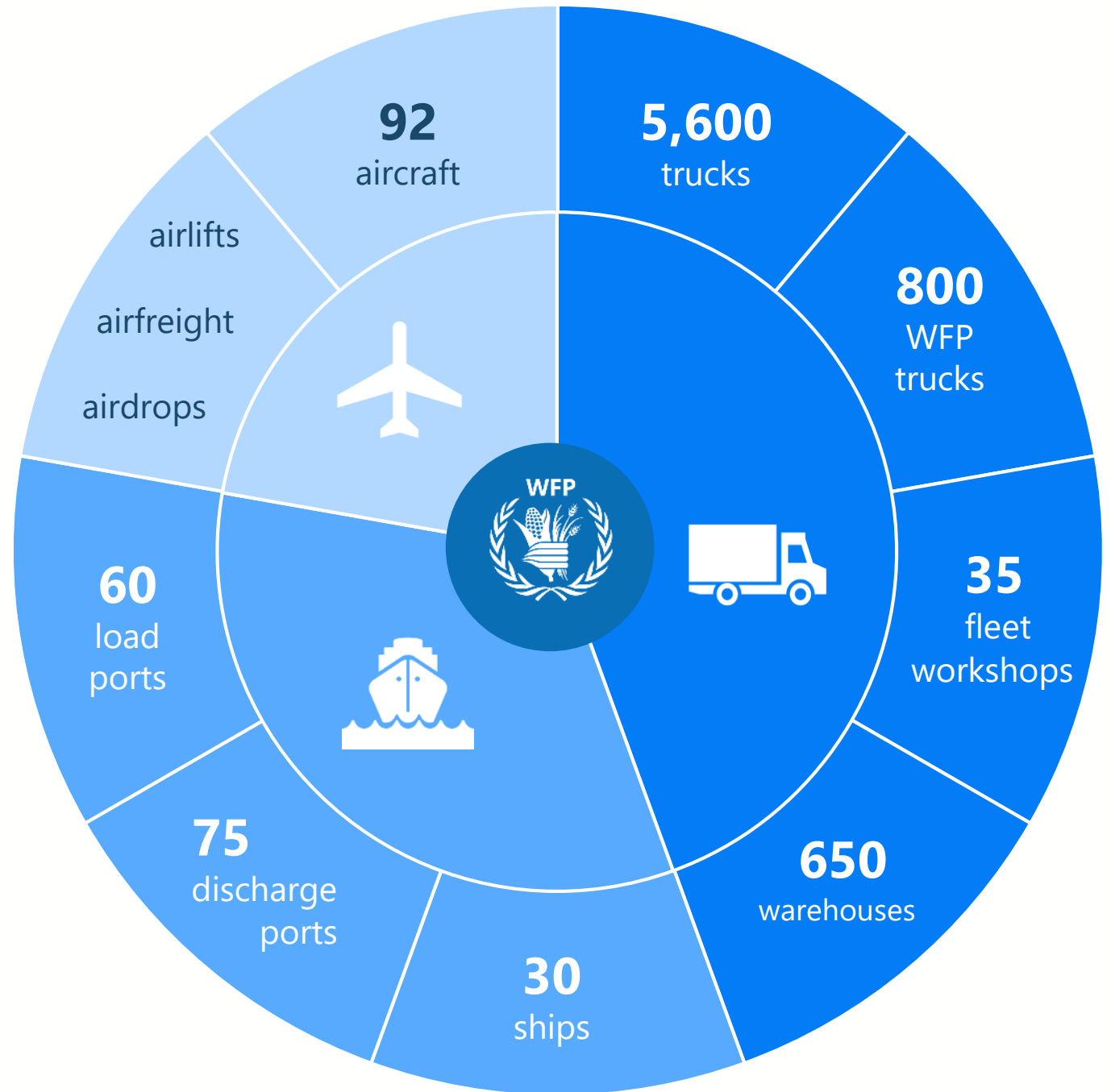
## Executive Board Induction Session

SAVING  
LIVES  
CHANGING  
LIVES

January 2020

**ON  
ANY  
GIVEN  
DAY**

**TO REACH  
90 MILLION  
BENEFICIARIES**



World Food Programme

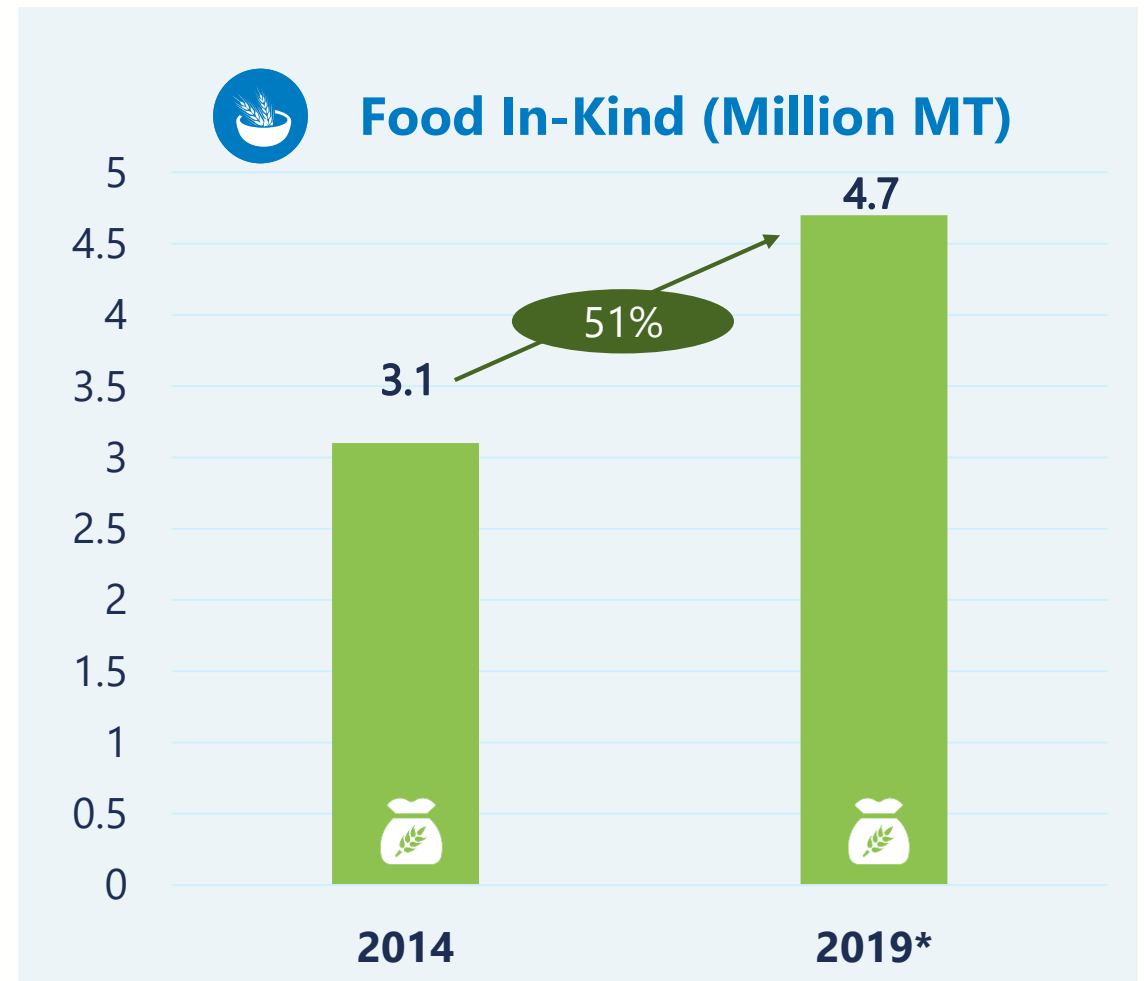
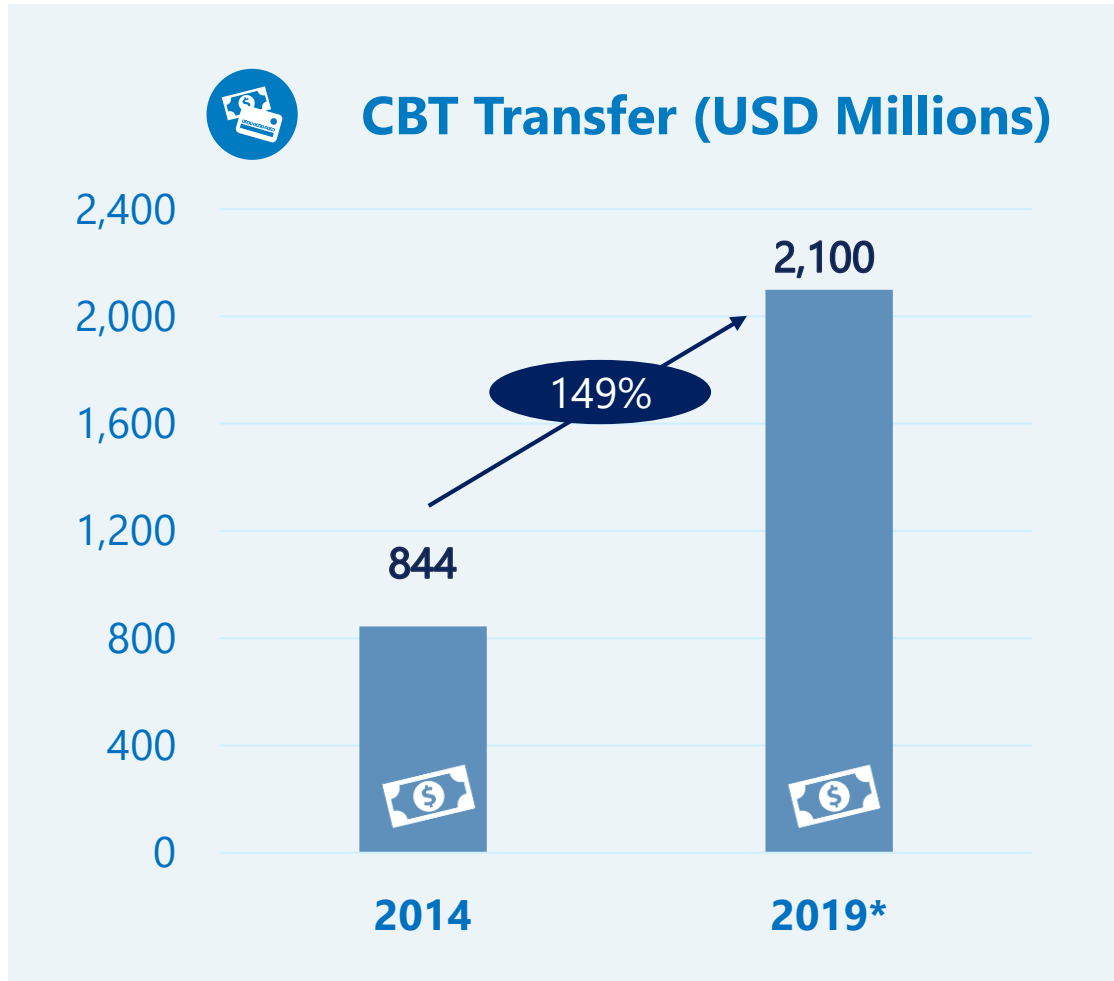
# ELEMENTS OF SUPPLY CHAIN



- CORE SUPPORT FUNCTIONS
- CORE OPERATIONAL FUNCTIONS
- HUMANITARIAN PARTNER SUPPORT

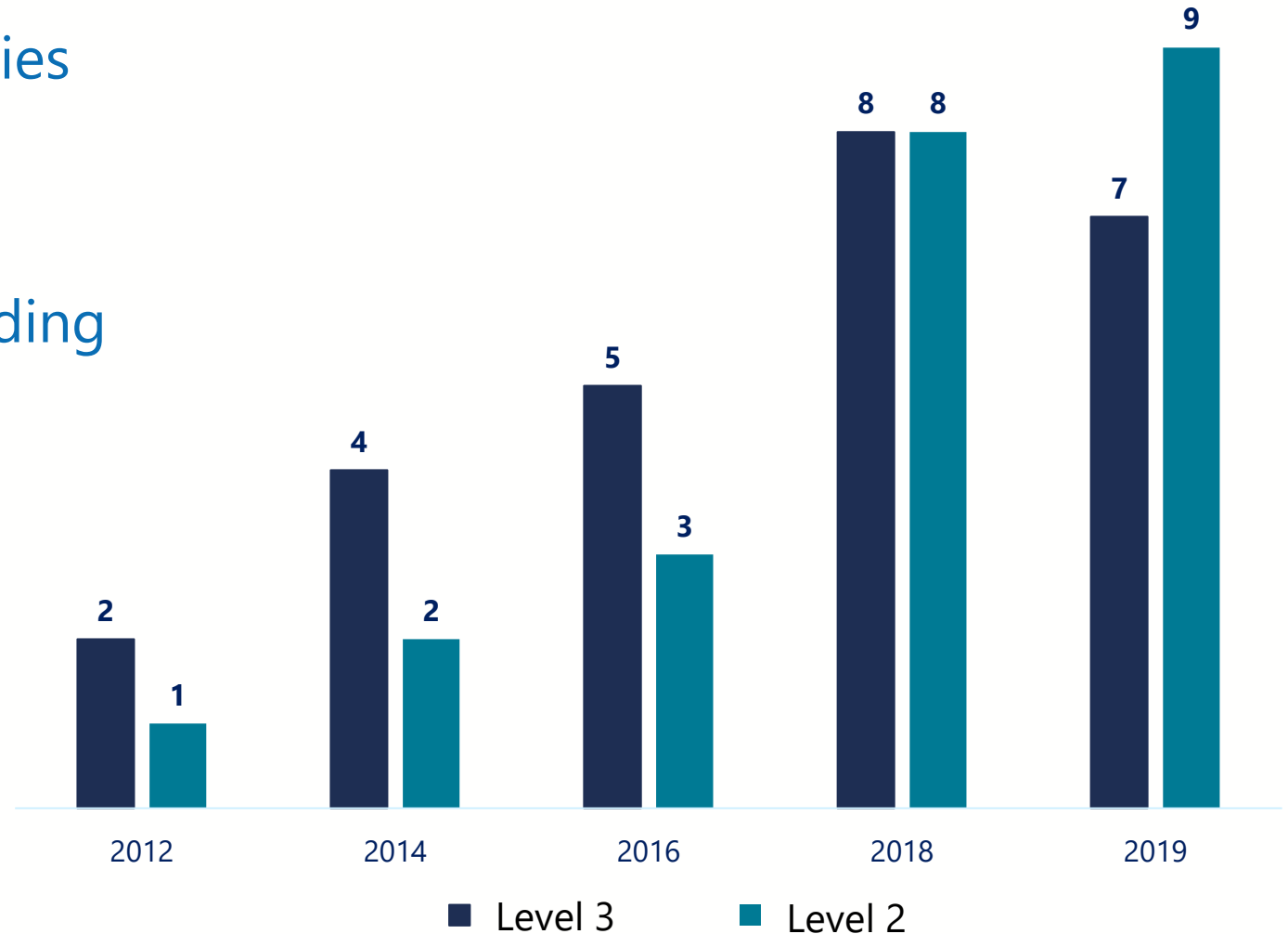


# Cash-Based Transfers and In-Kind Assistance are Increasing



# Growing Number of Emergencies

- Complex, protracted emergencies
- Often conflict-driven
- Accessibility, Planning and Funding



# Supply Chain-Serving the Wider Humanitarian Community

**600+**  
partners  
served



Facilitated storage of  
**300,000m<sup>3</sup>**  
of humanitarian  
cargo



**404,000**  
passengers  
transported



**95**  
countries  
reached





# Priority Areas for Supply Chain



**Compliance and Oversight**



**People Management**



**Simplifying Processes**



**Innovation**



**The Positioning of Supply Chain**



World Food Programme



# Questions?

