



World Food Programme



WFP Evaluation Function

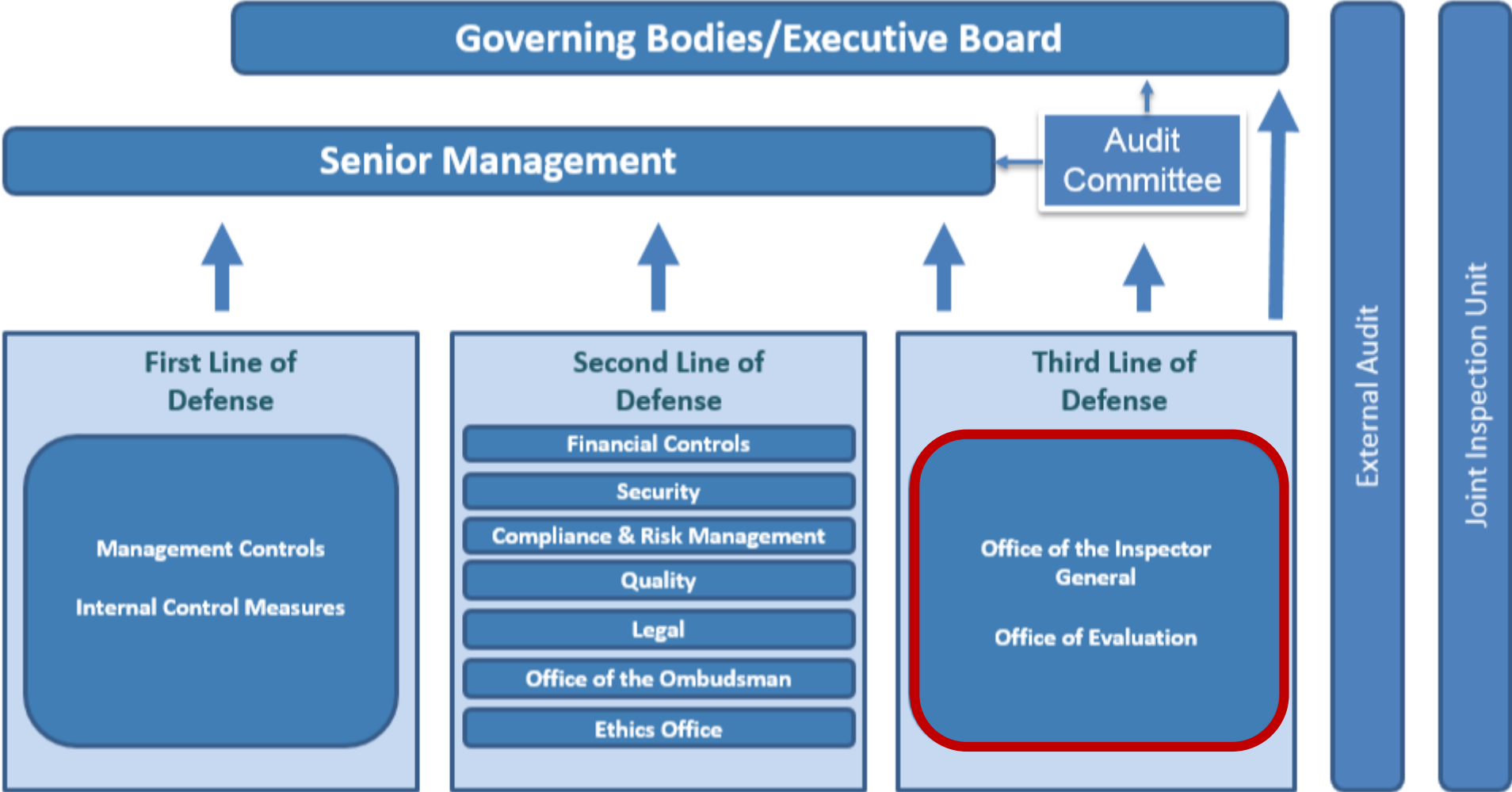
Andrea Cook, Director of Evaluation

Office of Evaluation

EB Induction Session
23 January 2020

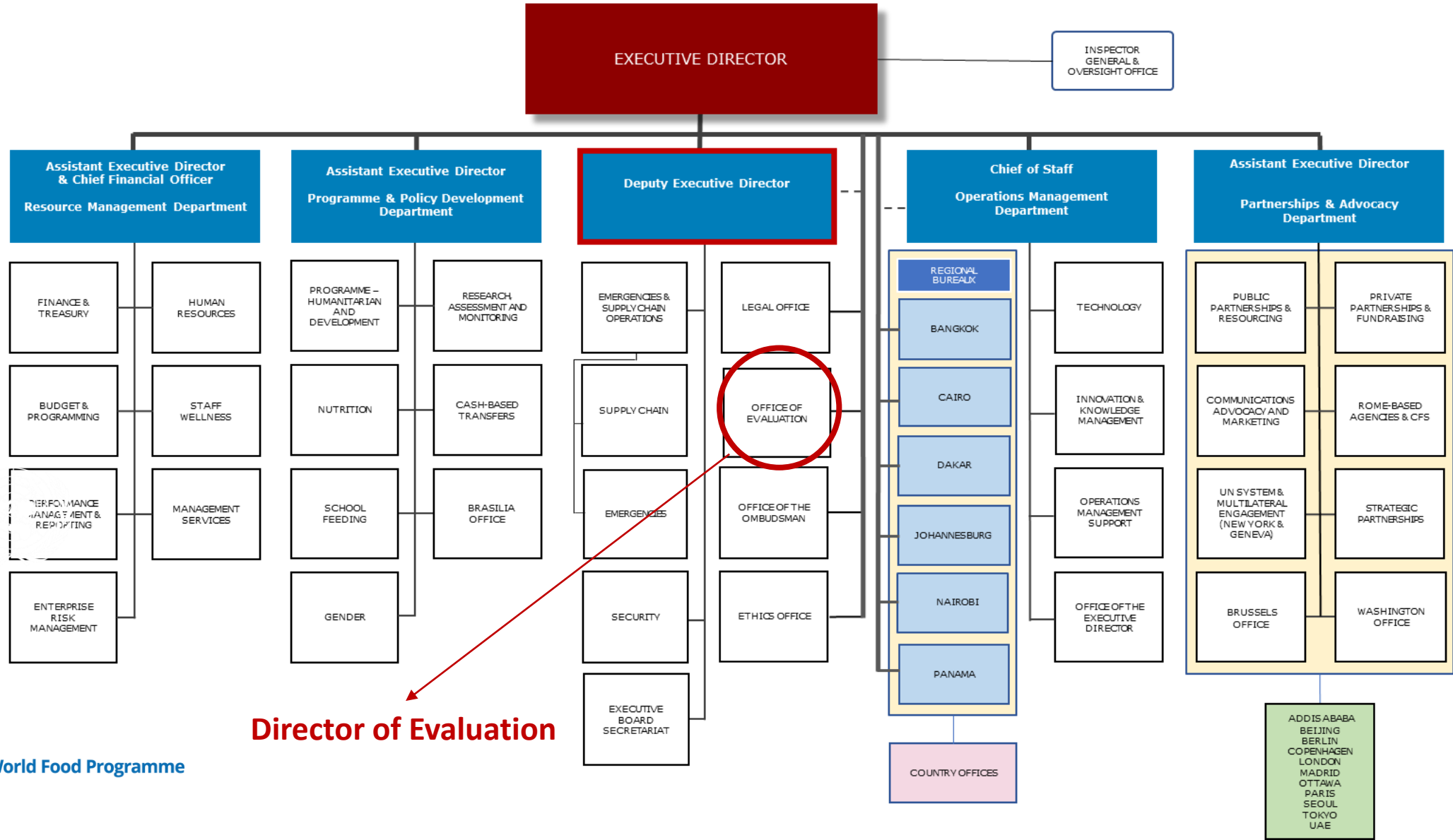
SAVING
LIVES
CHANGING
LIVES

WFP's Three Lines of Defense model

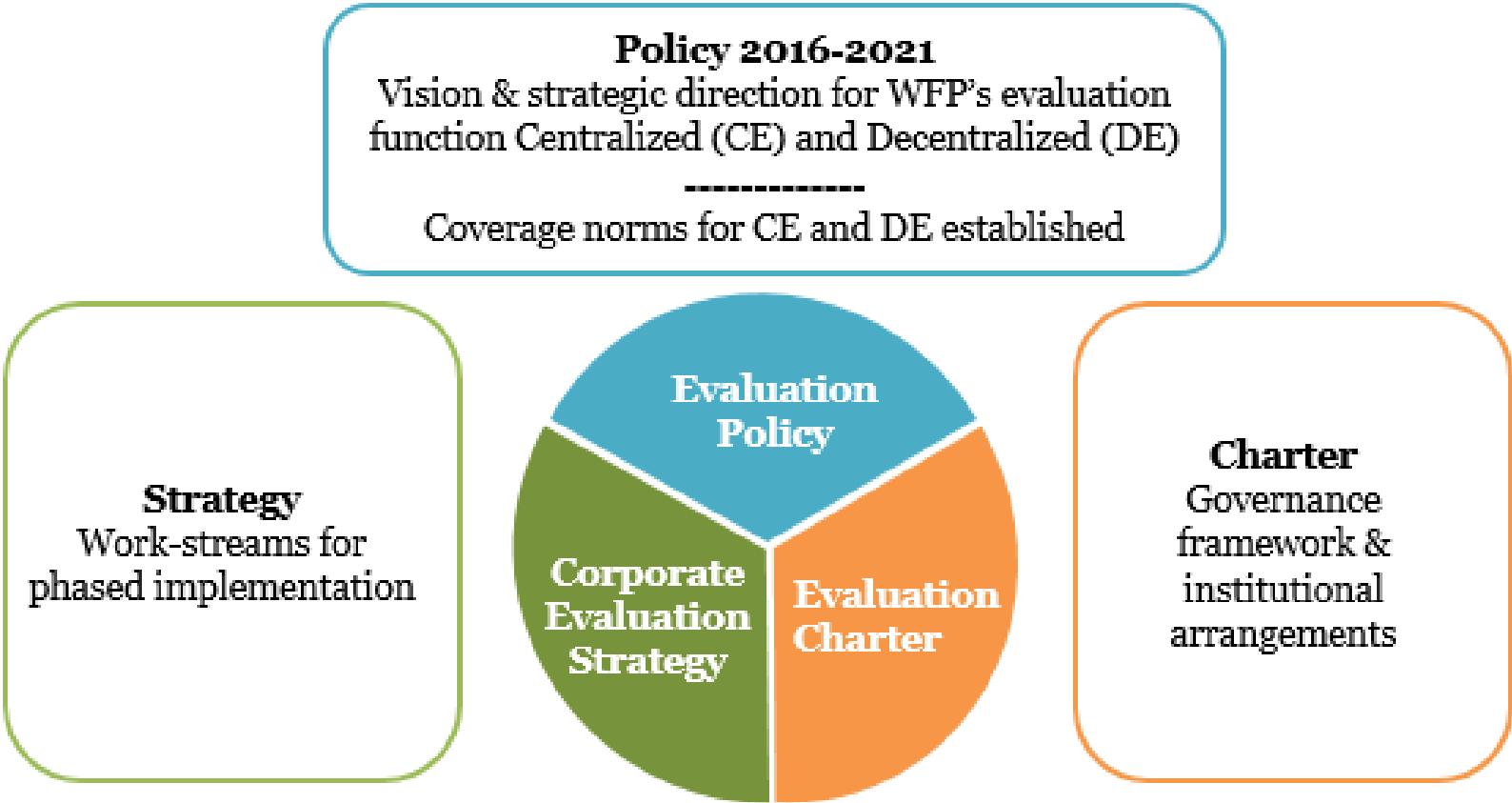


WFP Organizational Structure

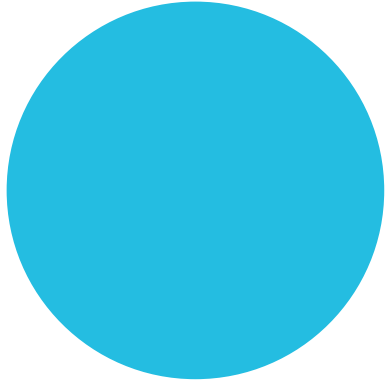
Executive Board



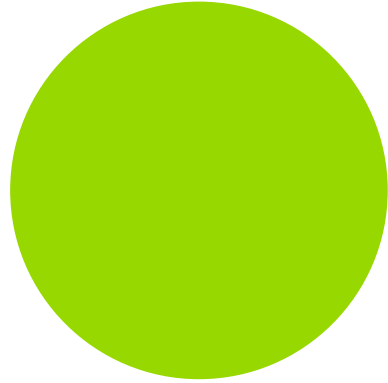
Evaluation Function Framework



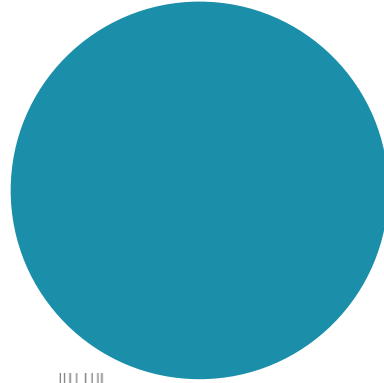
WFP Evaluation Function: international collaboration



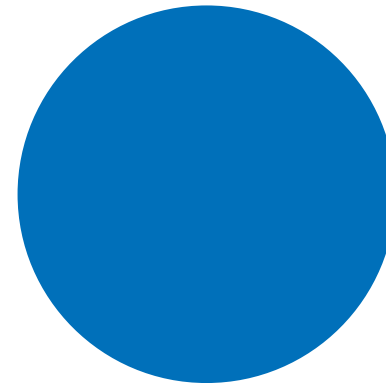
IASC
Inter-Agency
Standing Committee



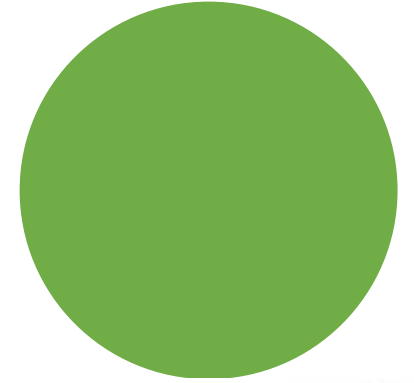
 **UNEG**
United Nations
Evaluation Group



 **IFAD**
 



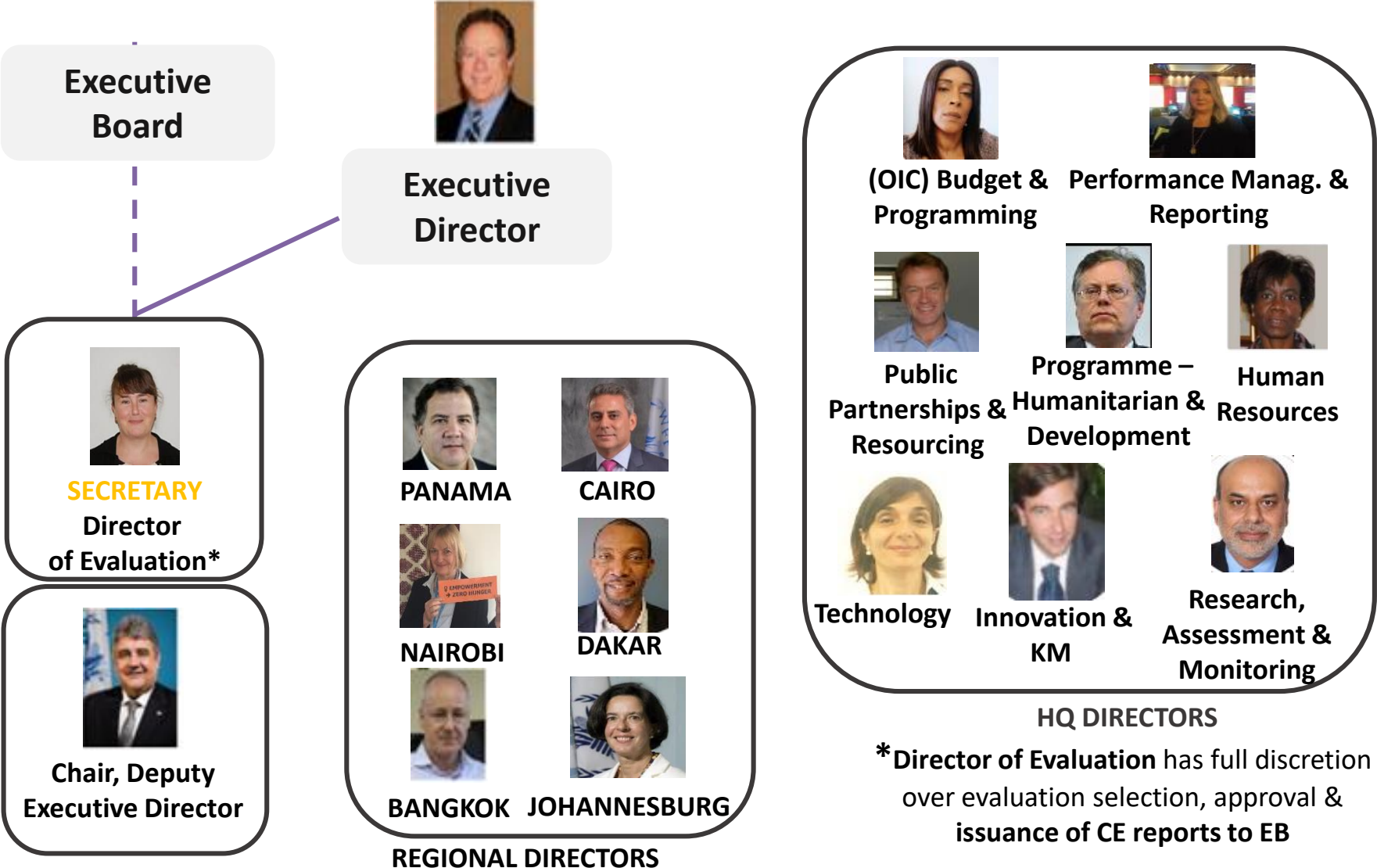
 **EVALPARTNERS**



 **WORLD BANK GROUP**
Social, Urban, Rural & Resilience

 **i2i**
DIME
TRANSFORM DEVELOPMENT

WFP Evaluation Function oversight: Evaluation Function Steering Group



WFP Evaluation Function oversight: Executive Board Role in evaluation

Oversight

- Exercise oversight of evaluation function
- Guide management in policy implementation
- Consider AER & all centralized evaluation reports
- Consider management responses & follow-up action reports

Normative Framework

- Approve evaluation policy and safeguard provisions
- Approve appointment, made by the ED, of Director of Evaluation
- Provide strategic guidance through Annual Consultation on Evaluation
- Foster evaluation culture as members of WFP Governing Body

Resourcing

- Approve OEV's budget
- Review trends in human & financial resources dedicated to evaluation

Planning

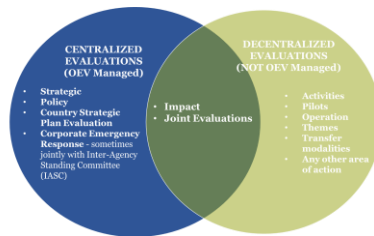
- Review OEV's work plan & priorities within WFP's Management Plan

Use

- Consider use of evaluation evidence when approving new policies, strategies, programmes, Management Plans, etc.
- Use evidence generated by evaluations in its decision-making

Evaluation planning and reporting

Evaluation Policy 2016-2021
Corporate Evaluation Strategy
Annual Consultation on Evaluation with EB



OEV Work Plan



Annual Evaluation Report
Evaluation Round Table

Planning

Implementing

Reporting

WFP Management Plan



Evaluation Reports

<https://www.wfp.org/independent-evaluation>

Upcoming Evaluation Reports

| EB.1/2020 | EB.A/2020 | EB.2/2020 |
|---|---|------------------|
| People Strategy (policy evaluation) | Gender (policy evaluation) | Bangladesh CSPE |
| WFP capacity to respond to emergencies (strategic evaluation) | Funding WFP's work (strategic evaluation) | Cameroon CSPE |
| | Annual Evaluation Report | DRC CSPE |
| | Lessons from policy evaluations | Indonesia CSPE |
| | | Timor-Leste CSPE |