



World Food Programme

SAVING
LIVES
CHANGING
LIVES

Gender Equality and WFP

EB Induction Session

22 January 2019

Fighting Hunger Worldwide



WFP Gender Policy
2015-2020



World Food Programme

wfp.org

OUTLINE

1. Provide an overview of WFP - its mission, structure and resources to deliver assistance;
 - Policy, Gender Action Plan, Regional Strategies
 - UNSWAP and other mainstreaming mechanisms
2. Enhance knowledge of WFP tools to support vulnerable people; and
 - Gender Transformation Programme, GRN structure, RGAs, Gender Office, Gender Toolkit and other capacity efforts
 - RWEE, partnerships
3. Introduce the role of the Membership in contributing to WFP's mandate.
 - Challenges and next steps
 - Advocacy, partnership, open dialogue, financial and technical resources

THE SUSTAINABLE DEVELOPMENT GOAL 2

- Zero Hunger pledges to end hunger, achieve food security, improve nutrition and promote sustainable agriculture
- **Can we reach Zero hunger without also reaching gender equality?**





- ❖ Individuals' experiences of hunger and malnutrition are intrinsically linked to their gender
- ❖ **Gender inequality remains one of the biggest issues affecting sustainable development, economic prosperity and a zero hunger world**

CONTEXTUALIZING GEWE TO WFP'S WORK

- ❖ **What does Gender Equality and Women's Empowerment mean to WFP?**
- ❖ For WFP, promoting gender equality means providing food assistance in ways that assign equal value to women and men, while respecting their differences. The treatment of women and men should be impartial and relevant to their respective needs.
- ❖ **For WFP, women's empowerment means that food assistance policies and programmes must create conditions that facilitate, and do not undermine, the possibilities for women's empowerment.**



GENDER POLICY 2015-2020

To enable WFP to integrate gender equality and women's empowerment into all of its work and activities, to ensure that the different food security and nutrition needs of women, men, girls and boys are addressed.

Objectives

I:
Food assistance
adapted to
different needs

II:
Equal
participation

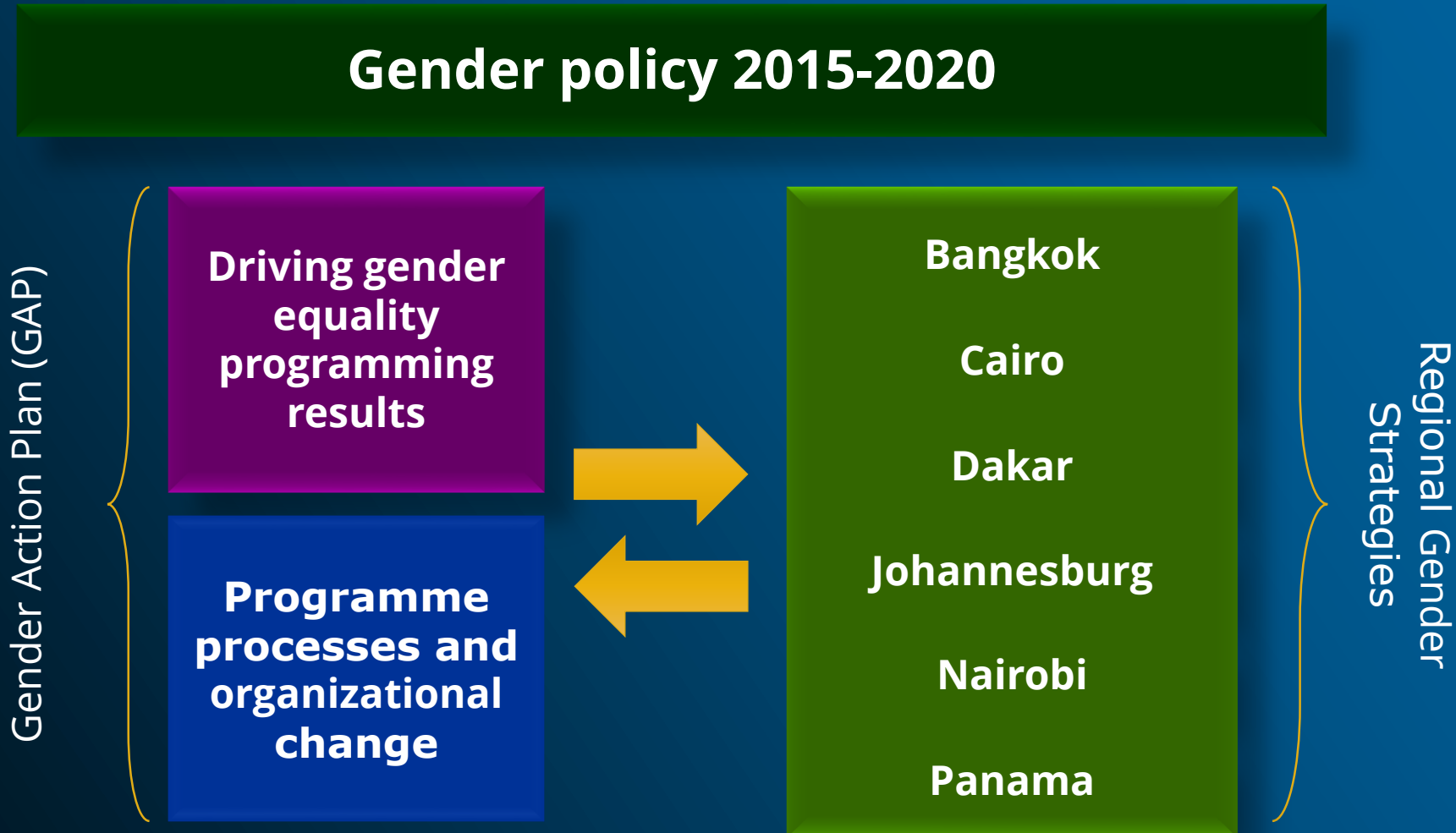
III:
Decision-making
by women and
girls

IV:
Gender and
protection

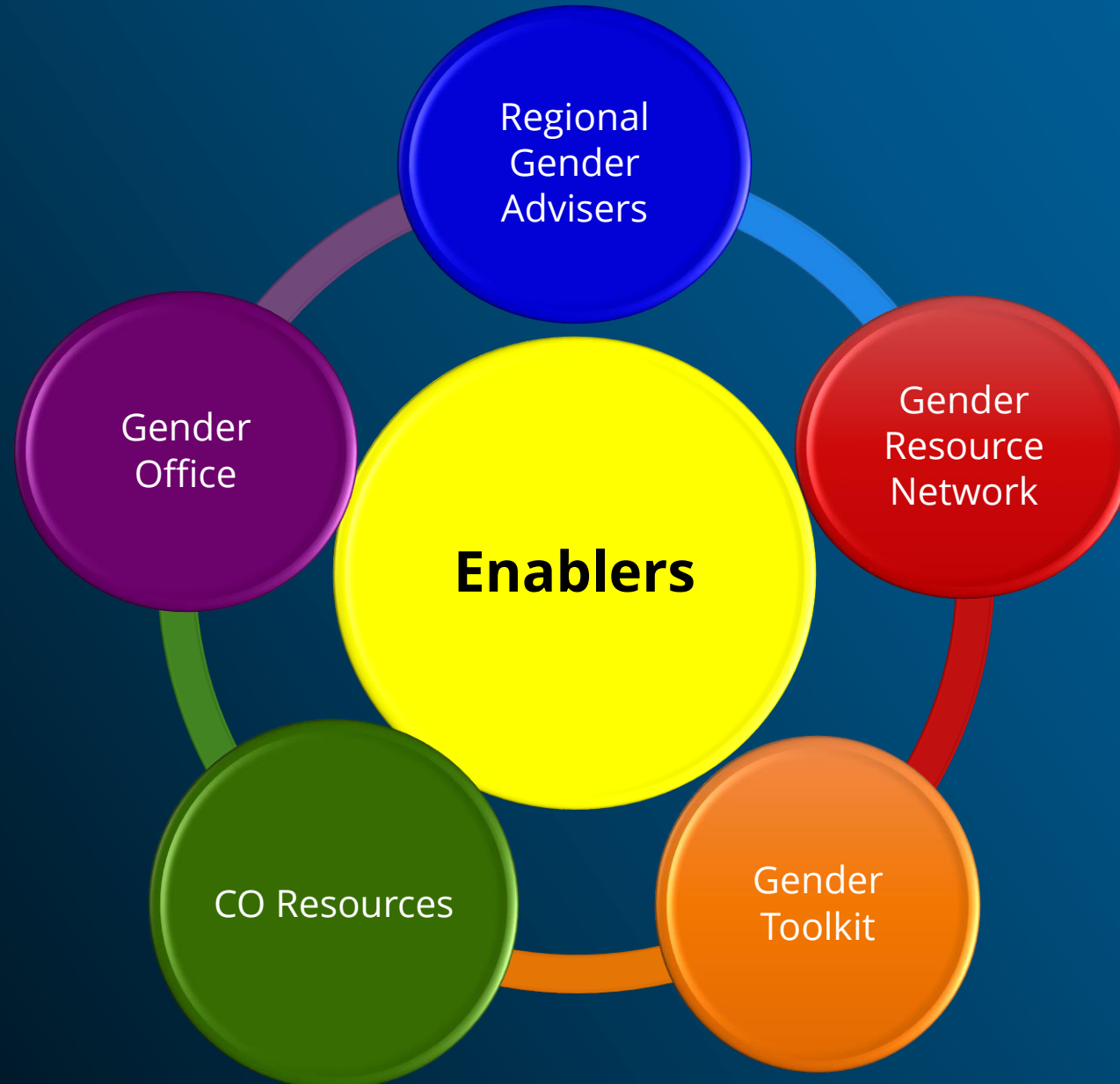
LEAVING NO ONE BEHIND

WFP GENDER POLICY FRAMEWORK

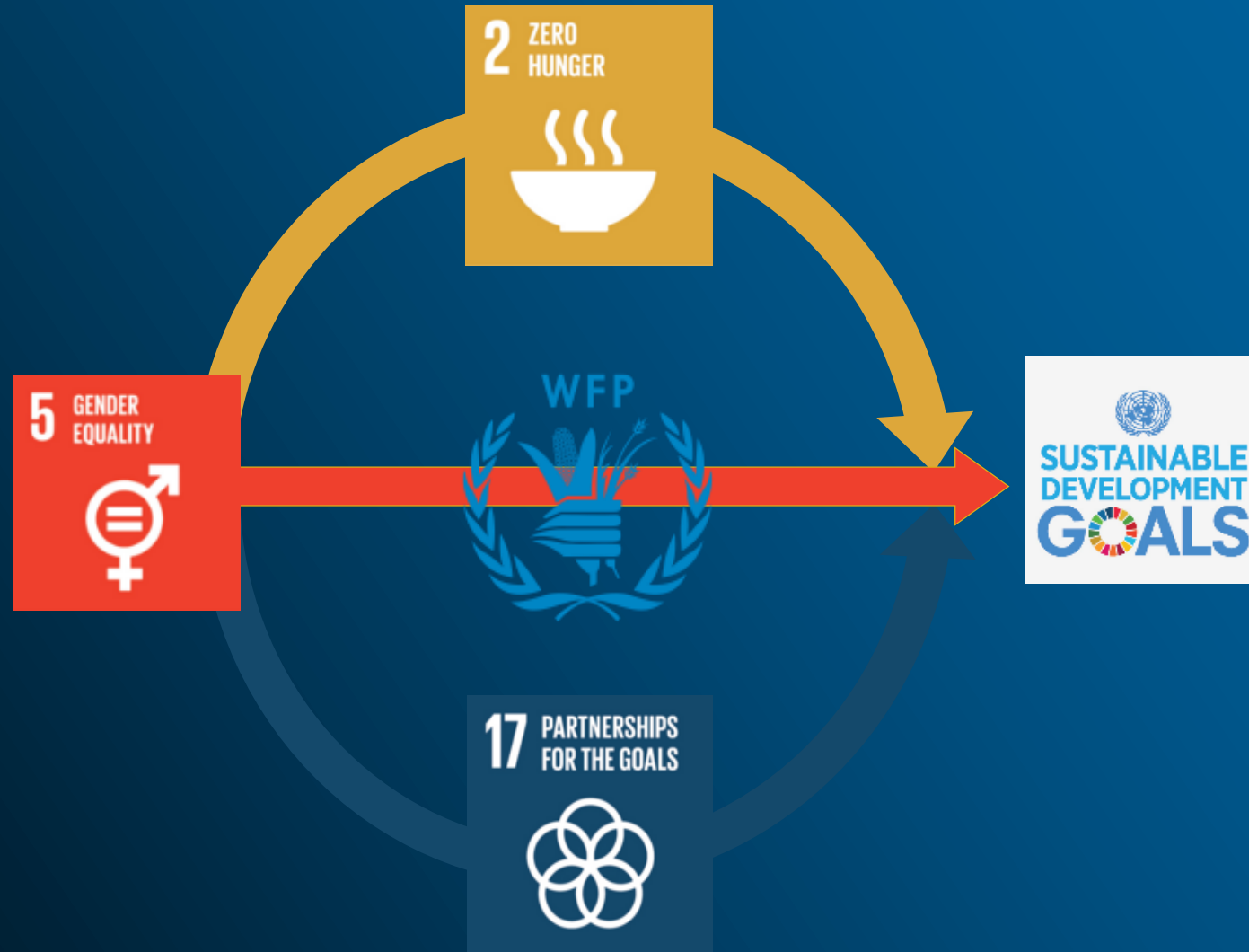
- **Complementing gender policy and frameworks**



ENABLERS AND RESOURCES FOR GENDER



WORKING WITH PARTNERS



ACCELERATING PROGRESS TOWARDS THE ECONOMIC EMPOWERMENT OF RURAL WOMEN (JP RWEE)

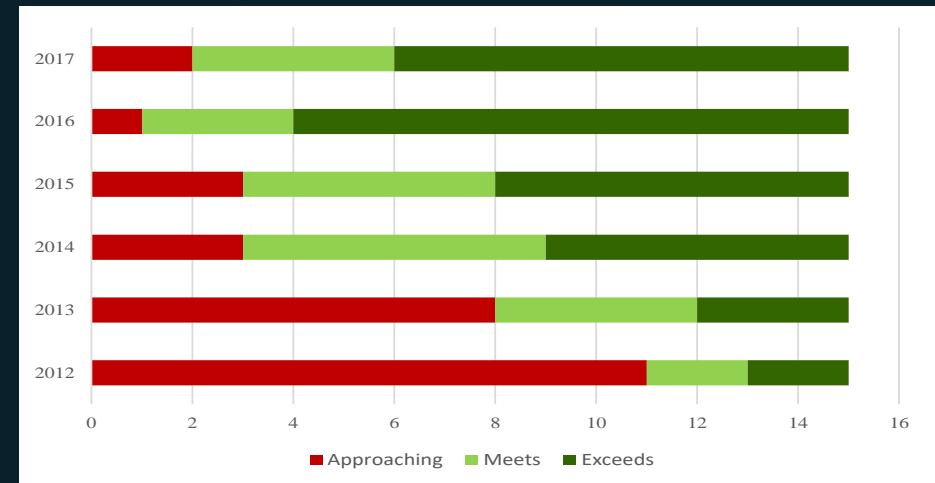
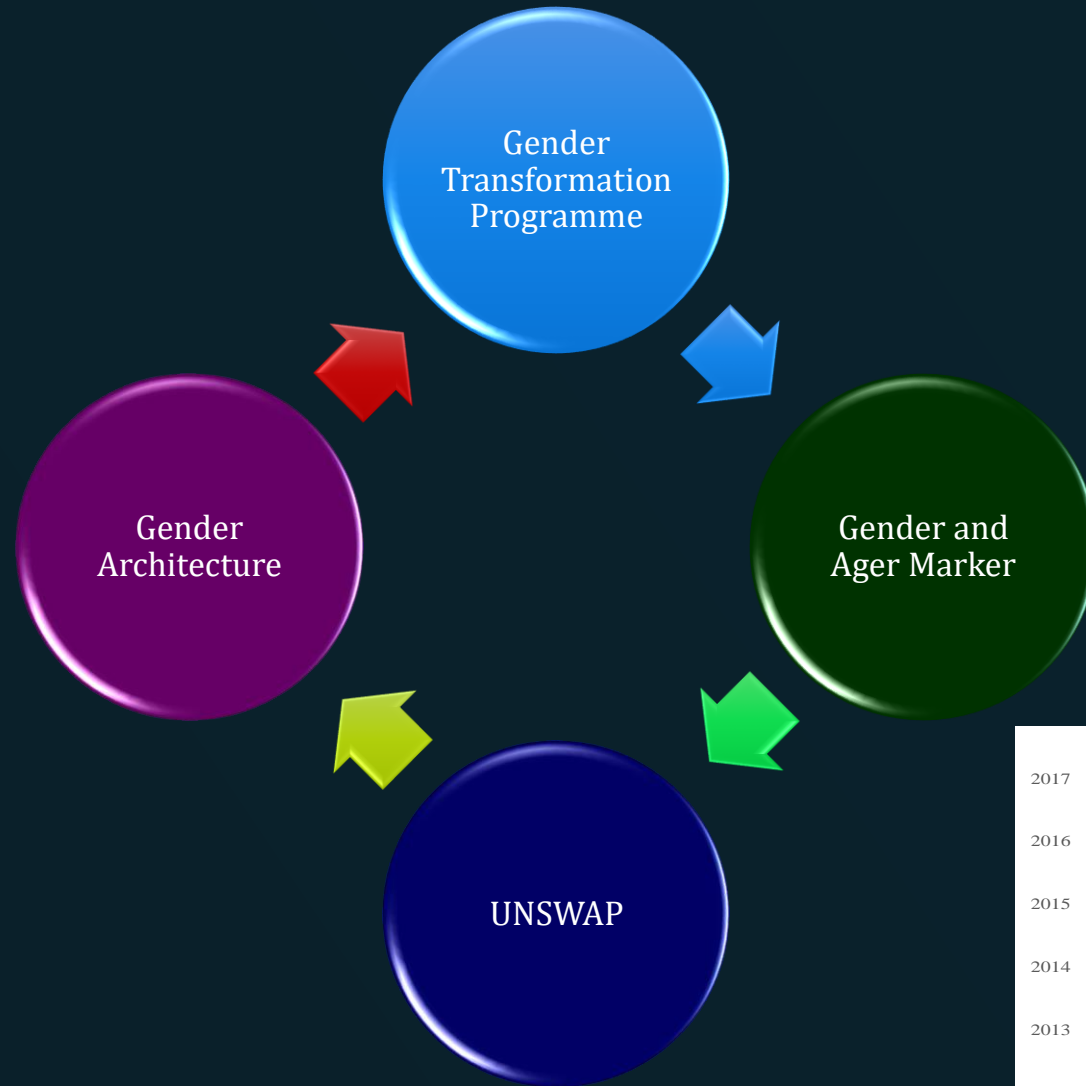
Four main outcomes:

- I. Improved food and nutrition security
- II. Increased income to sustain livelihoods
- III. Enhanced participation in decision-making at community level
- IV. More gender-responsive policy environment

Countries: Ethiopia, Guatemala, Kyrgyzstan, Liberia, Nepal, Niger and Rwanda



GENDER MAINSTREAMING



CHALLENGES

- Financial and human resources to scale up the Gender Transformation Programme and other programme of work
- Support to Gender Resource Network members and other gender focal points
- More emergencies and crises
- Gender capacities and understanding



PRIORITIES

- ▶ Integration of gender in the IRM
- ▶ Implementation of gender mainstreaming mechanisms
- ▶ Strengthened commitment and capacities of WFP employees
- ▶ Knowledge generation that underpins evidence-based programming
- ▶ Strategic advocacy and campaigns
- ▶ Effective collaboration with diverse partners

THE ASK



- Continued advocacy by the Board for gender equality
- Continued support, technical and financial to gender
- Open dialogue and partnership between WFP and the Board members





Thank you!