



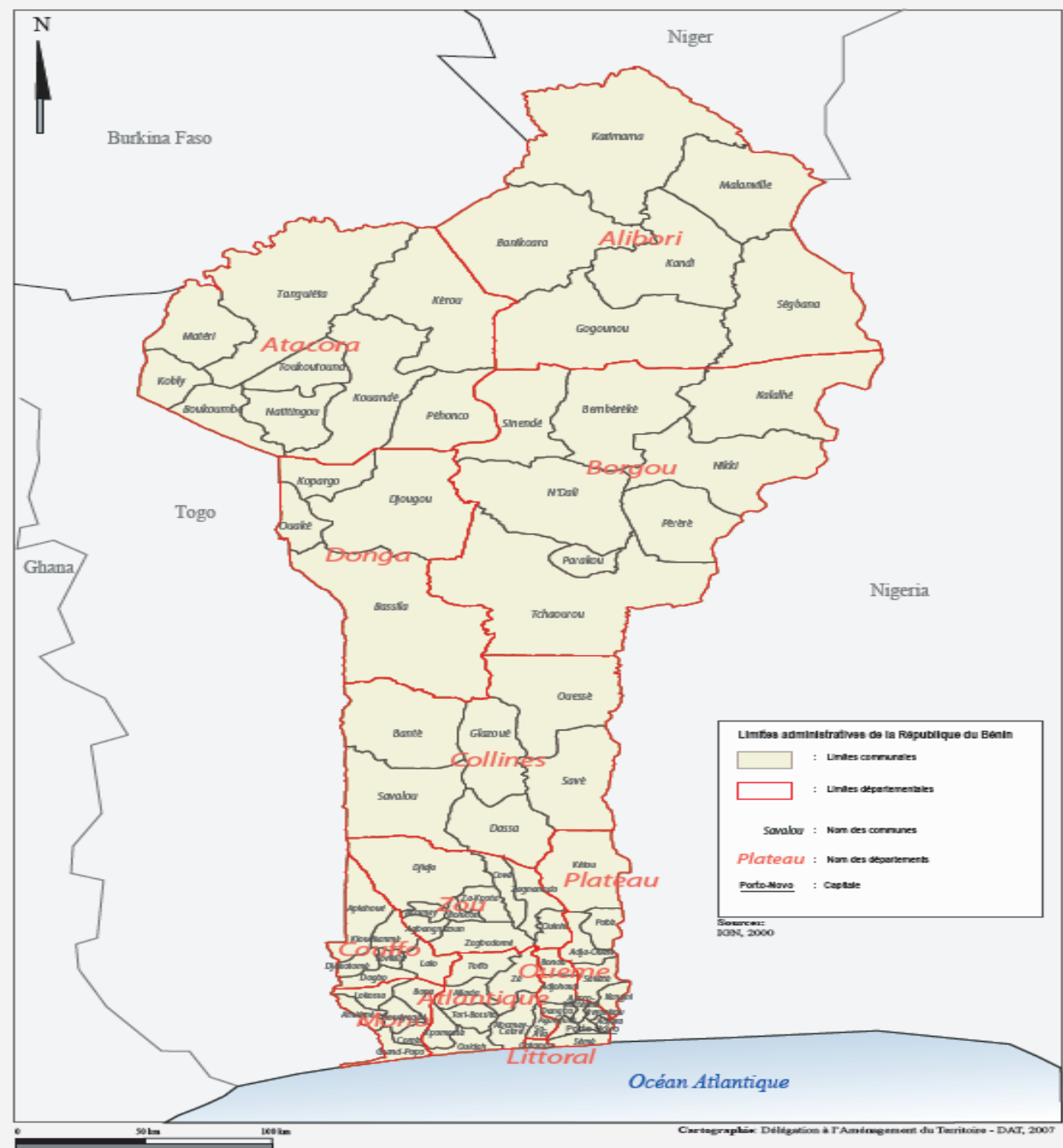
World Food  
Programme

A young girl with a joyful expression is the central focus of the image. She is wearing a light-colored, sleeveless top and is seated at a wooden table, holding a bright blue bowl. The background shows a classroom setting with other children and a decorative lattice window that allows natural light to filter through.

# BENIN Country Strategic Plan (2019-2023)

SAVING  
LIVES  
CHANGING  
LIVES

November 2018



# Republic of Benin



# Foundations of BENIN CSP



# Purpose of the CSP

Addressing the root causes of hunger and malnutrition



**SO1:**  
Vulnerable school-aged children and communities have adequate access to safe, nutritious food and basic social services throughout the school year



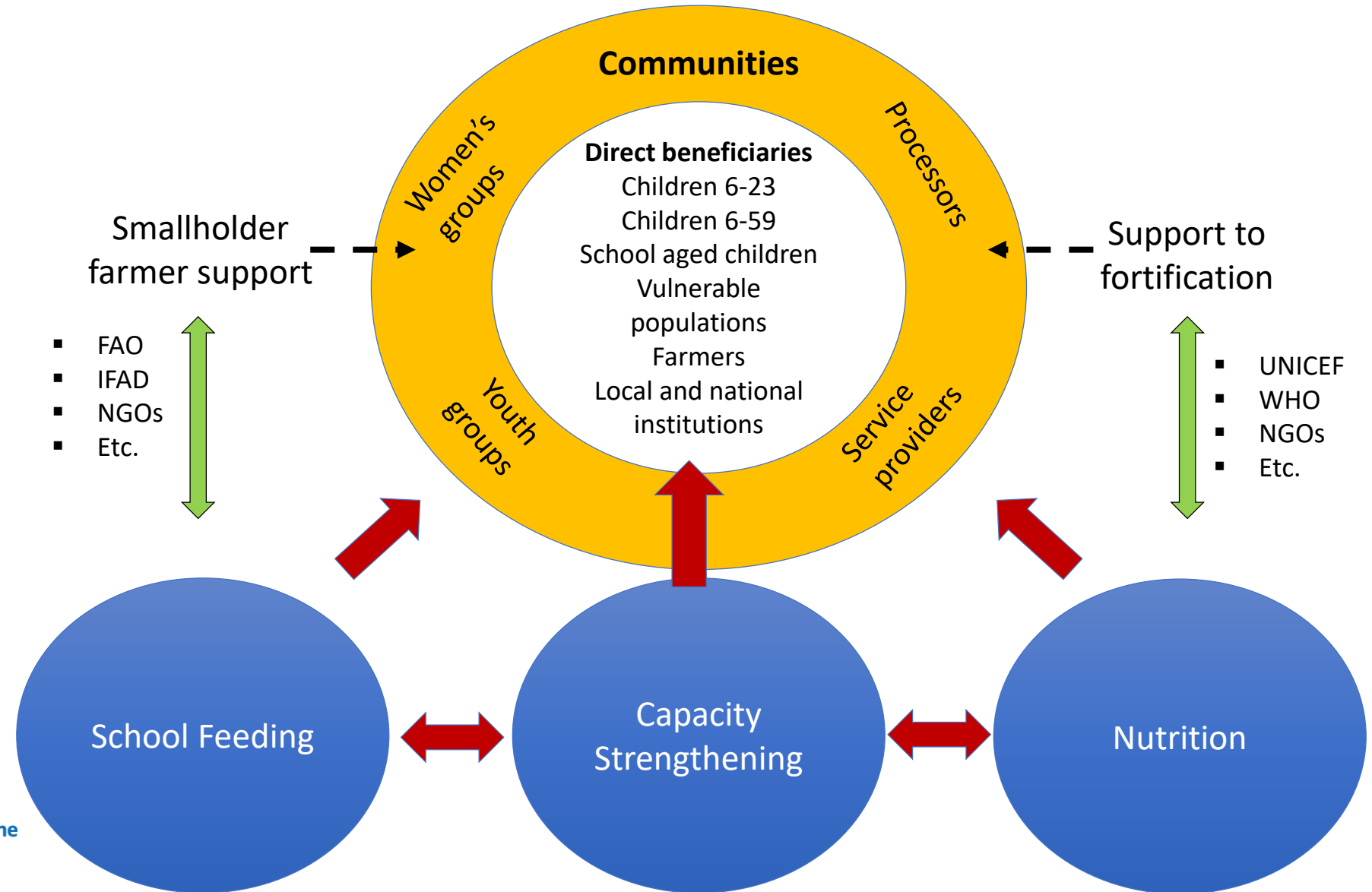
**SO2:**  
Vulnerable children under 5 and Pregnant and Lactating Women and Girls (PLWG) in targeted areas have improved nutrition status by 2023



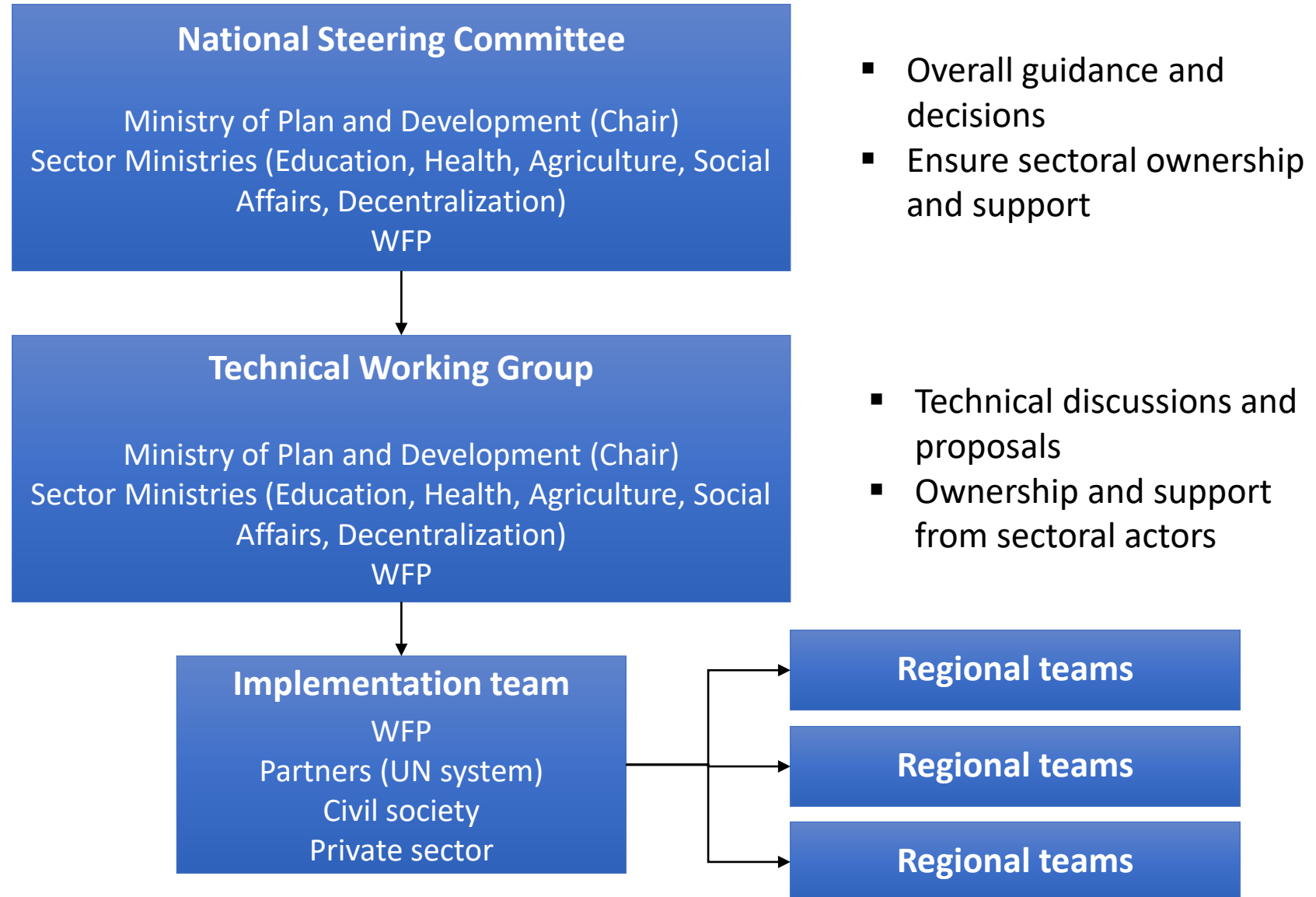
**SO3:**  
National and local institutions have increased capacity to manage integrated school feeding, food security and other inclusive systems to achieve SDG2

Strong national ownership through close involvement in programme design, implementation and monitoring

# BENIN/WFP Integrated Interventions CSP 2019 - 2023



# Proposed Management Structure



# STRATEGIC SHIFTS

- **Transitioning support from school feeding to National Integrated Home-Grown School Feeding (HGSF) programme as entry point for local Development;**
- **WFP will work with the Government to strengthen its capacity for the design and implementation of sustainable national school feeding programme, including procurement and supply chain management through development of systems and tools and hands-on training;**
- **WFP will focus on advocacy and policy work for the elaboration of a law on school meals that promotes local production and facilitate the government-led development of a National School Feeding Strategy;**
- **Mainstreaming gender transformation into all programme activities.**

# EXIT STRATEGY

- The exit strategy for WFP in Benin consists in the absorption of the schools presently supported by WFP into the Integrated National School Feeding Programme (INSFP – PNASI).
- WFP envisages a gradual transfer of programme implementation to the Government as it gains increasing capacity and role in administering the programme.
- Important steps:
  - Development of National School Feeding Strategy
  - Elaboration and implementation of capacity strengthening plan
  - Switch to national school feeding model
  - Increasing work through national structures
  - Gradual withdrawal from programme implementation to advisory role
  - Increased focus on the prevention of malnutrition through Social Behaviour Changed Communication (SBCC), nutrition-sensitive universal school feeding, promotion of health dietary habits and the promotion of nutritious, diverse and affordable local food (incl. fortified food)



# CONCLUSIONS

- **This CSP is the result of a wide consultative process in the Country involving all stakeholders, and responds to the priorities identified by the ZHSR;**
- **It is aligned with the government development agenda 2025, the African Union 2063 agenda and the Global 2030 agenda for sustainable development;**
- **It represents the commitment of Benin and WFP to move from school feeding response focus to resilience building and long-term development;**
- **Over a four-year period, the CSP will reach about 956,922 beneficiaries, at a total cost of USD 115 million dollars. WFP and the government of Benin will work together to develop a resource mobilization strategy to cover the gap in CSP funding;**
- **The long-term objective of 100 percent coverage indicates the Government's strong political commitment to continuity.**



**THANK  
YOU!**