



# Induction Session

# Resource Management Department

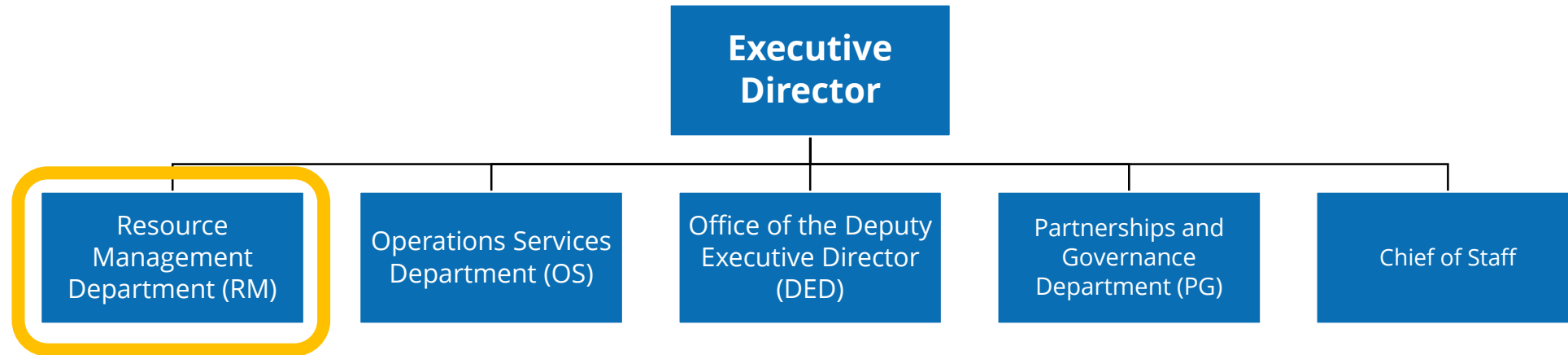
EXECUTIVE BOARD

21 September 2018



Supporting and enabling operations by leading performance management and safeguarding resources to improve the lives of the people we serve

# WHERE DO WE FIT





# OUR TEAM



**Manoj Juneja**

Assistant Executive Director  
for RM and CFO



**Sean O'Brien**

Budget & Programming (RMB)  
and Deputy CFO



**Robert van der Zee**

Finance & Treasury (RMF)



**Philip Ward**

Management Services (RMM)



**Jane Pearce**

Performance Management  
& Monitoring (RMP)



**Christophe Boutonnier**

Security (RMQ)



**Jonathan Howitt**

Enterprise Risk Management  
(RMR)

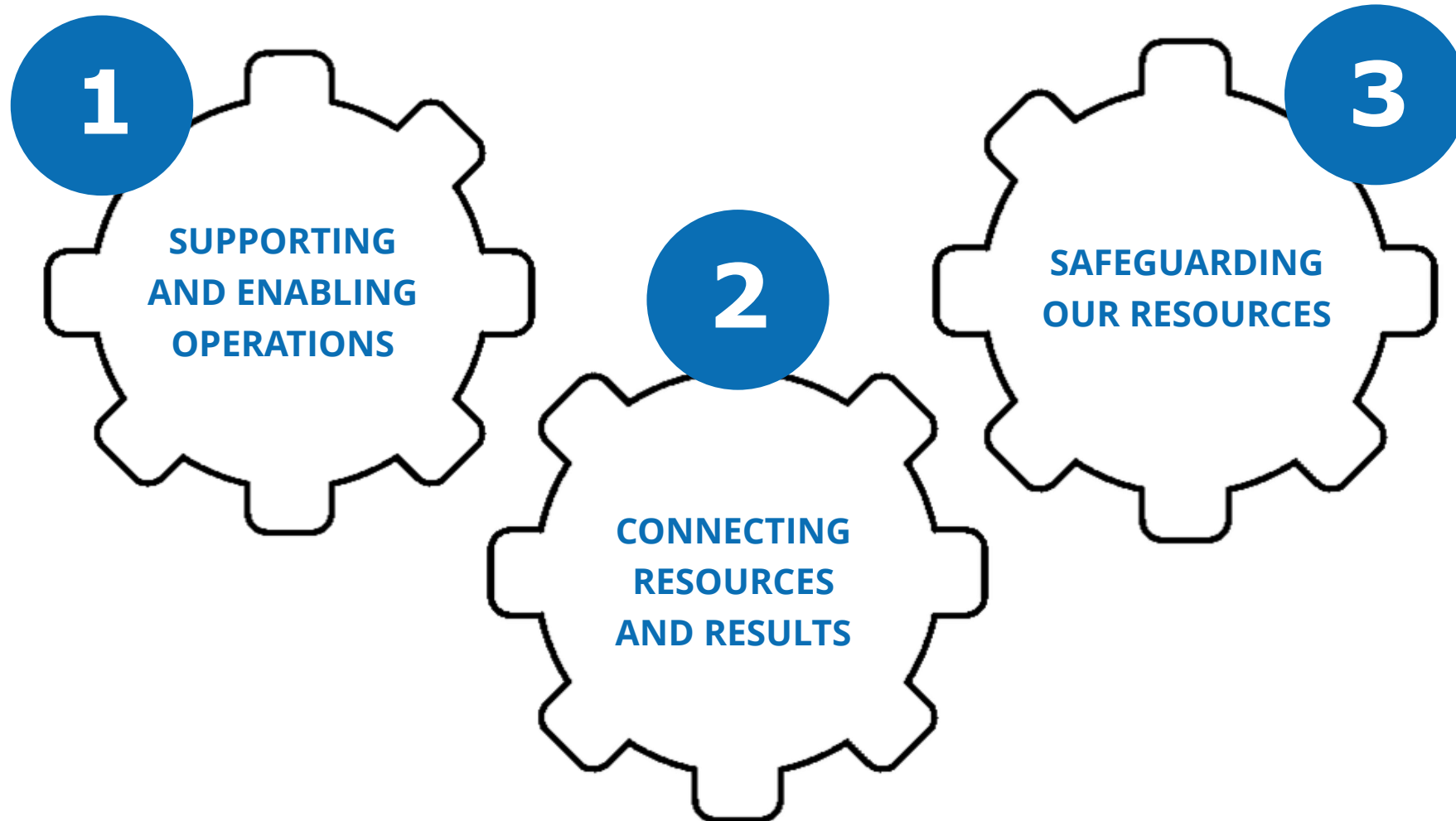


**Sergio Arena**

Staff Wellness (RMW)

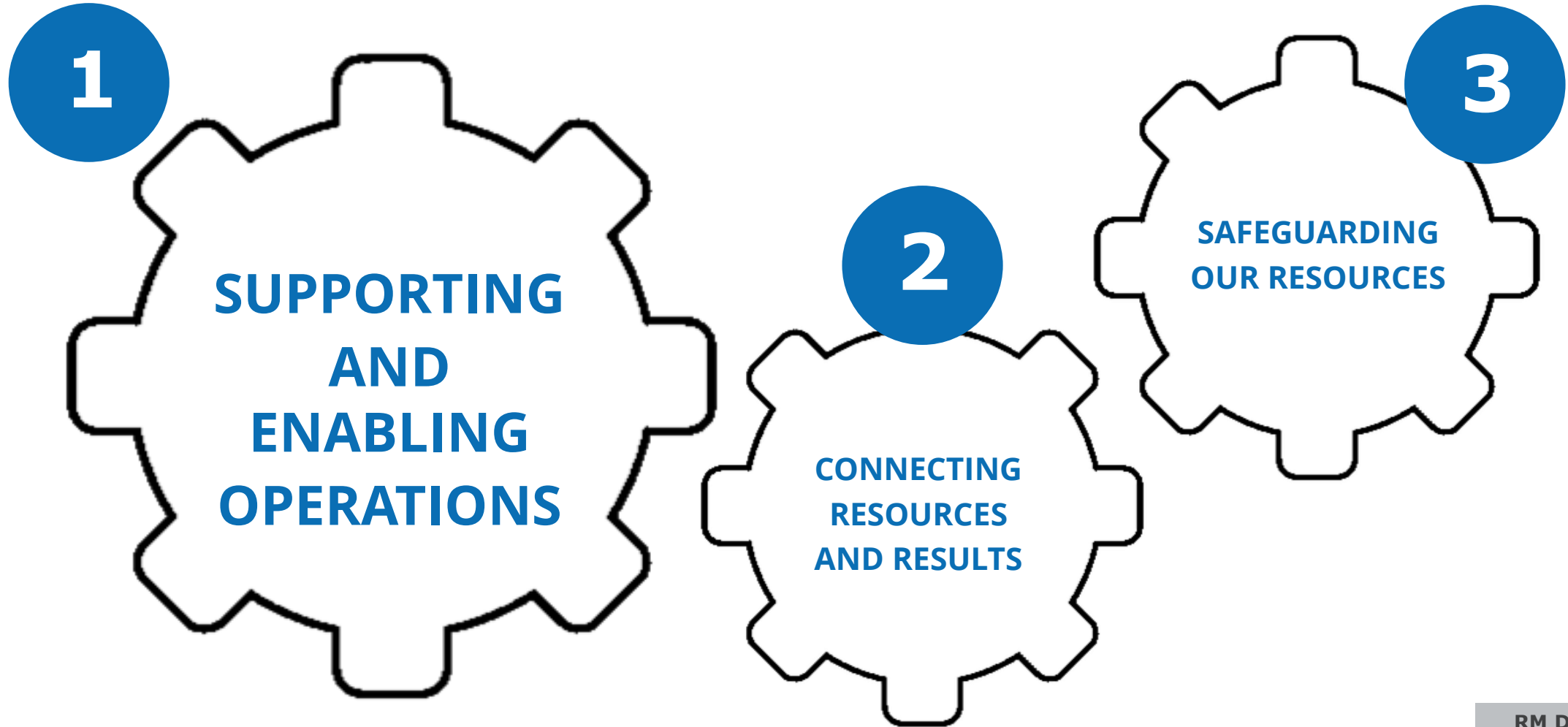
# WHAT WE DO

3 Key Thematic Areas



# WHAT WE DO

3 Key Thematic Areas



# SUPPORTING & ENABLING OPERATIONS

Looking after our people



**Christophe  
Boutonnier**

Security  
(RMQ)



**Sergio Arena**

Staff Wellness  
(RMW)



**Philip Ward**

Management  
Services  
(RMM)

## SECURITY & SAFETY



SSAFE Security Training

## STAFF WELLNESS



Vaccination Campaign  
in South Sudan

## FACILITIES & ACCOMMODATION



Upgrade of accommodation



# SUPPORTING & ENABLING OPERATIONS

## Innovative Financial Tools



**Sean  
O'Brien**

Budget &  
Programming  
(RMB)



**Robert  
van der Zee**

Finance &  
Treasury (RMF)



Internal Project Lending and  
Macro-Advance Financing



Immediate Response  
Account



Global Commodity  
Management Facility

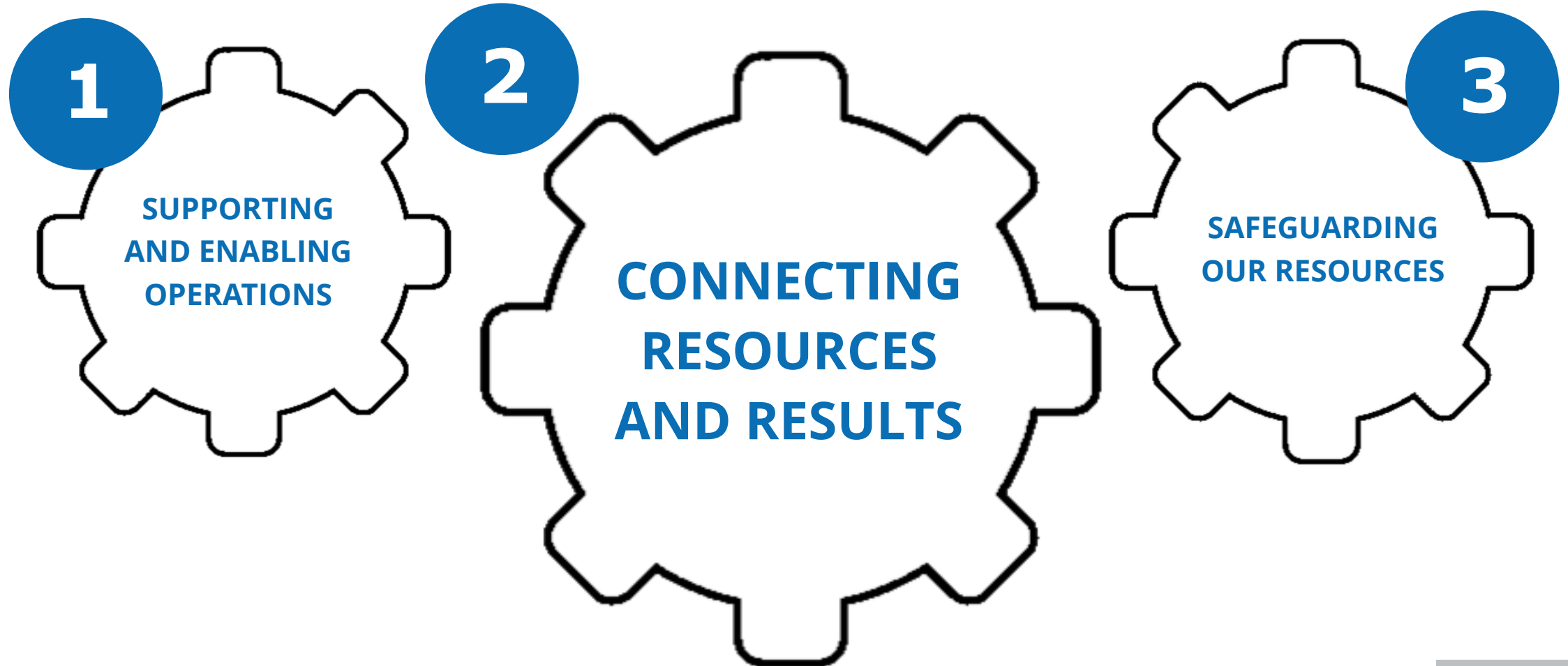


Cash-Based Transfers



# WHAT WE DO

3 Key Thematic Areas



---

# CONNECTING RESOURCES & RESULTS

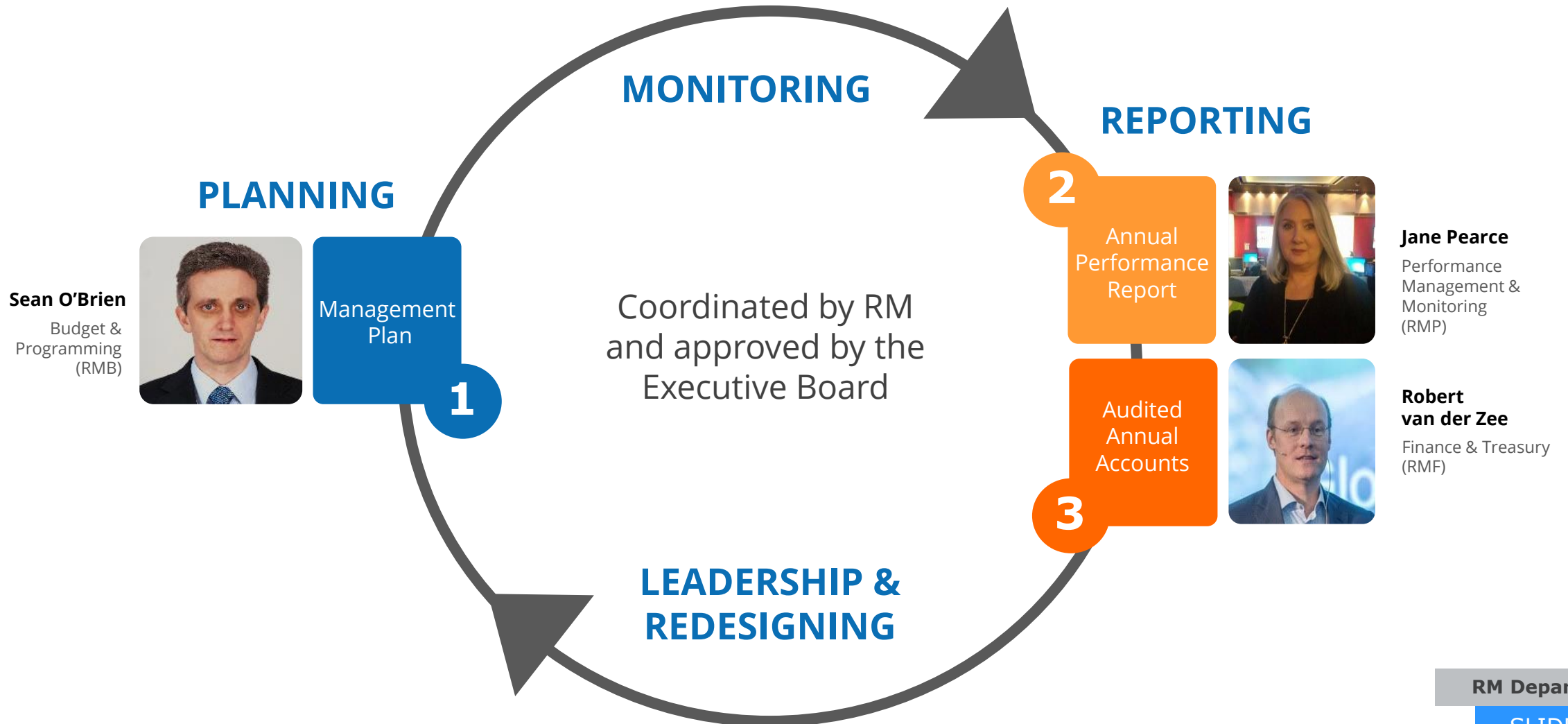
Did you know that WFP has a committee to advise management on the use of multilateral resources?

It is the Strategic Resource Allocation Committee (SRAC)



# CONNECTING RESOURCES AND RESULTS

## The 3 Key RM-related EB Documents





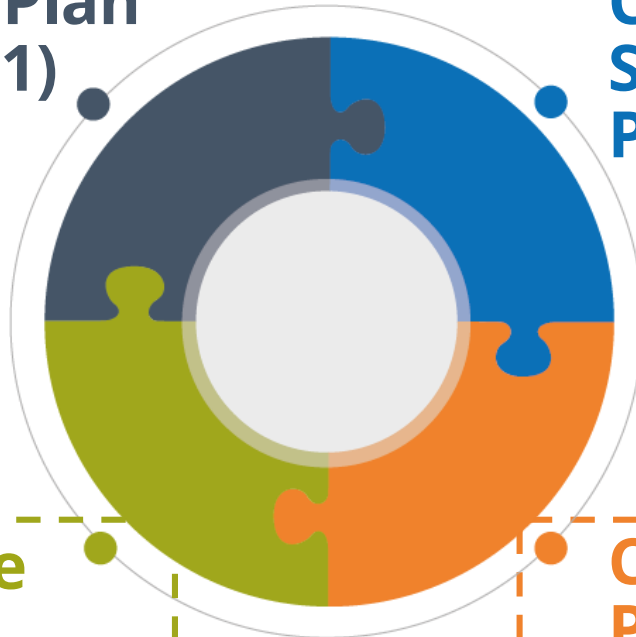
# LINKING RESOURCES TO RESULTS

## Integrated Road Map (IRM)

WFP's approach to achieving Zero Hunger through the IRM

Strategic Plan  
(2017-2021)

Country  
Strategic  
Plans



Corporate  
Results  
Framework

Country  
Portfolio  
Budget

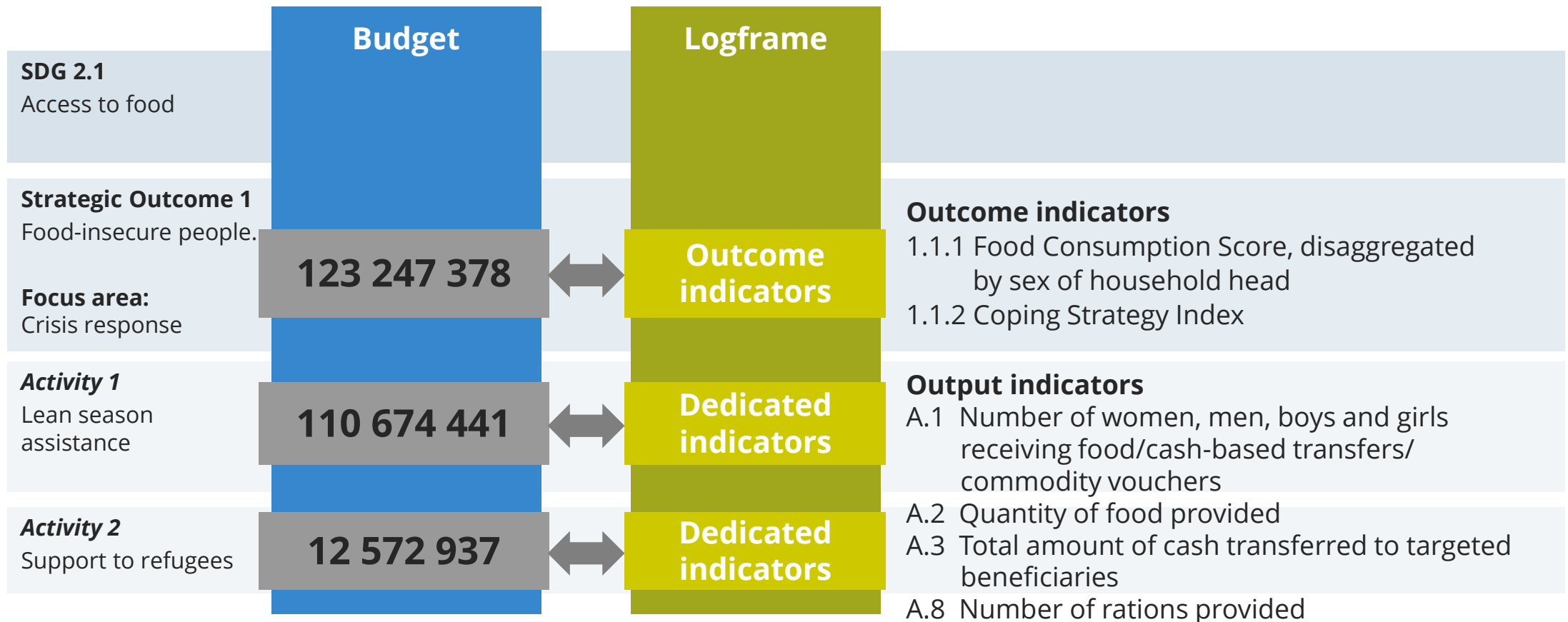
ROAD TO COMPLETION

WHERE WE ARE

- The majority of WFP's country offices shifted to the IRM framework during 2018
- Remaining 11 countries, including some of WFP's largest and most complex operations, making the transition in early 2019.

# LINKING RESOURCES TO RESULTS

Establishing a clear “line of sight” from Strategic Results to Strategic Outcomes to Activities to costs



**Integrated systems to report on resources to results**

# WHAT WE DO

3 Key Thematic Areas

1

SUPPORTING  
AND ENABLING  
OPERATIONS

2

CONNECTING  
RESOURCES  
AND RESULTS

3

SAFEGUARDING  
OUR  
RESOURCES



# SAFEGUARDING OUR RESOURCES

Strengthening assurance and controls



Enterprise Risk Management & Internal Controls



Global Asset Management



Financial Risk Management & Cash Management

Process Efficiency Lens



**USD 5.9 M**

Savings on CO FX transactions performed by HQ in 2017



**USD 16 M p.a.**

Through simplification, efficiency and digital transformation in travel, asset and fleet management



---

# SAFEGUARDING OUR RESOURCES

Risk Management

**OVERSIGHT  
FRAMEWORK**

**ENTERPRISE RISK  
MANAGEMENT  
POLICY**

**STATEMENT OF  
INTERNAL  
CONTROL**





# Treading lightly on the earth

---

A sound environmental policy and systems that consistently manage environmental risks and improve environmental outcomes will better equip WFP to help achieve the SDGs and end hunger



# KEY RM DATES AND DOCUMENTS IN 2018-2019

## Key RM Documents (November 2018)

### Executive Board Second Regular Session 2018

- Revised Corporate Results Framework (2017-2021)
- Enterprise Risk Management Policy
- Risk Appetite Statement
- WFP Management Plan (2019-2021)

2018

- October – (TBC) Two Informal Consultations on the Revised Corporate Results Framework (2017-2021)
- 31 October – Update of the Environmental Policy
- **26-30 November - Second Regular Session of the Executive Board**
- 17 December – Fourth Quarterly Briefing on Oversight

2019

- January – (TBC) Resource Management Seminar
- **25 February-1 March – First Regular Session of the Executive Board**
- April – (TBC) Resource Management Seminar on EB.A/2019
- 27-29 May – Finance Committee on WFP matters
- **10-14 June – Annual Session of the Executive Board**



**1.7M MT**

**GMCF**

Food purchased through  
the facility in 2017



**USD 675 M**

**Physical Assets**  
tracked and managed  
(2018 year to date)



**USD 5.6 B**

**Central Treasury**  
cash outflows  
carried out in 2017



**USD 7.5 M**

from RMQ to  
support operations  
in the field  
incl. specific training  
for female staff

# THANK YOU



**22**

**Corporate Indicators**  
that measure the  
change in people's lives



**USD 89 M**

**Engineering work**  
25 projects in  
26 countries  
(2018 year to date)



**10,670**

**Medical and**  
Counselling sessions  
globally to help  
employees  
(2018 year to date)



**USD 5 M**

**Critical Corporate**  
Initiatives  
to strengthen ERM and  
internal control