

Regional Overview for Southern Africa presented to the Executive Board



Regional Outlook - La Niña



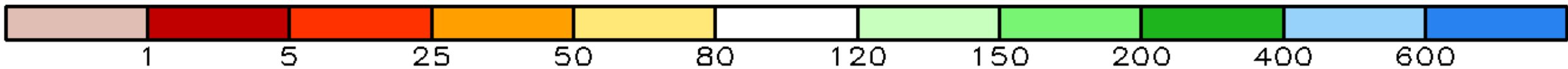
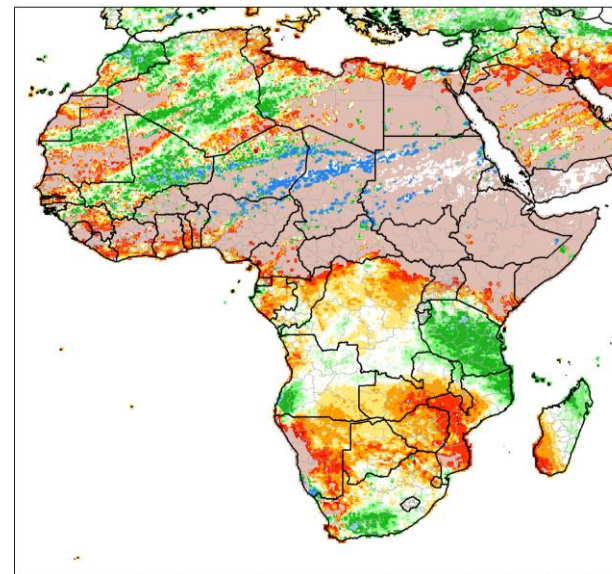
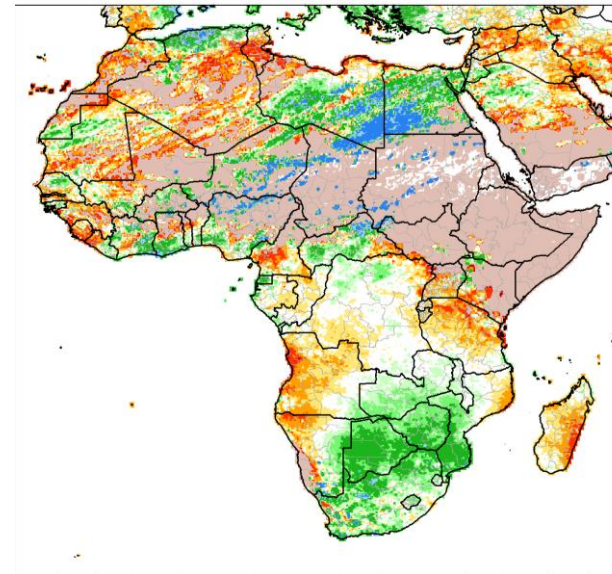
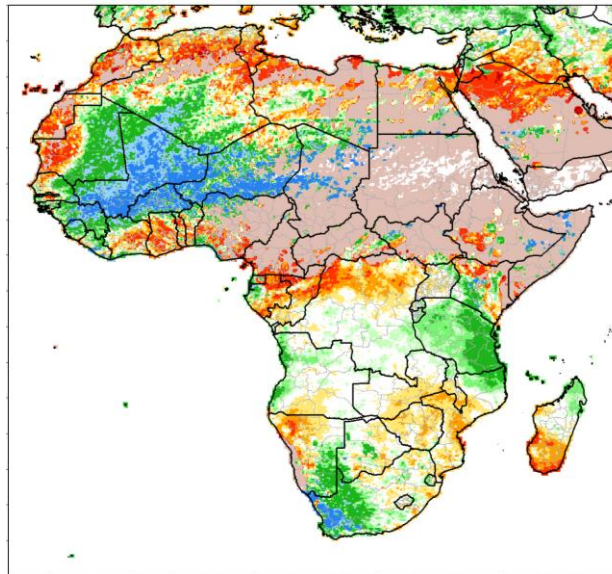
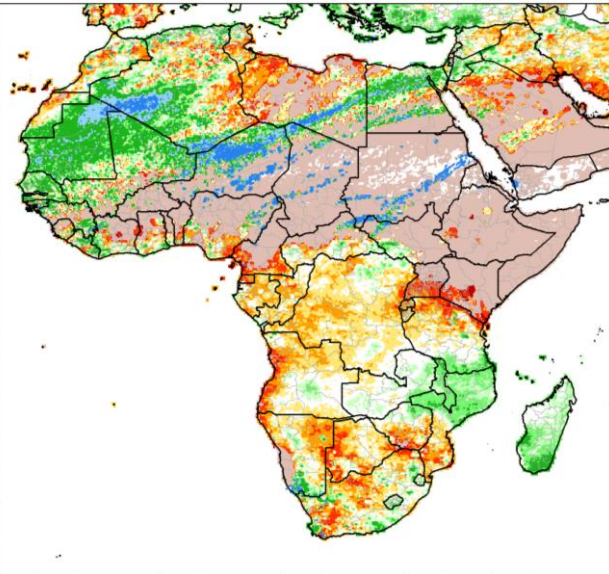
1-Month Percent of Normal Rainfall (%)

01 Jan 2015 – 31 Jan 2015

01 Jan 2016 – 31 Jan 2016

01 Jan 2017 – 31 Jan 2017

01 Jan 2018 – 31 Jan 2018



Regional Outlook – Fall Army Worm



Malawi



Zimbabwe



Zambia



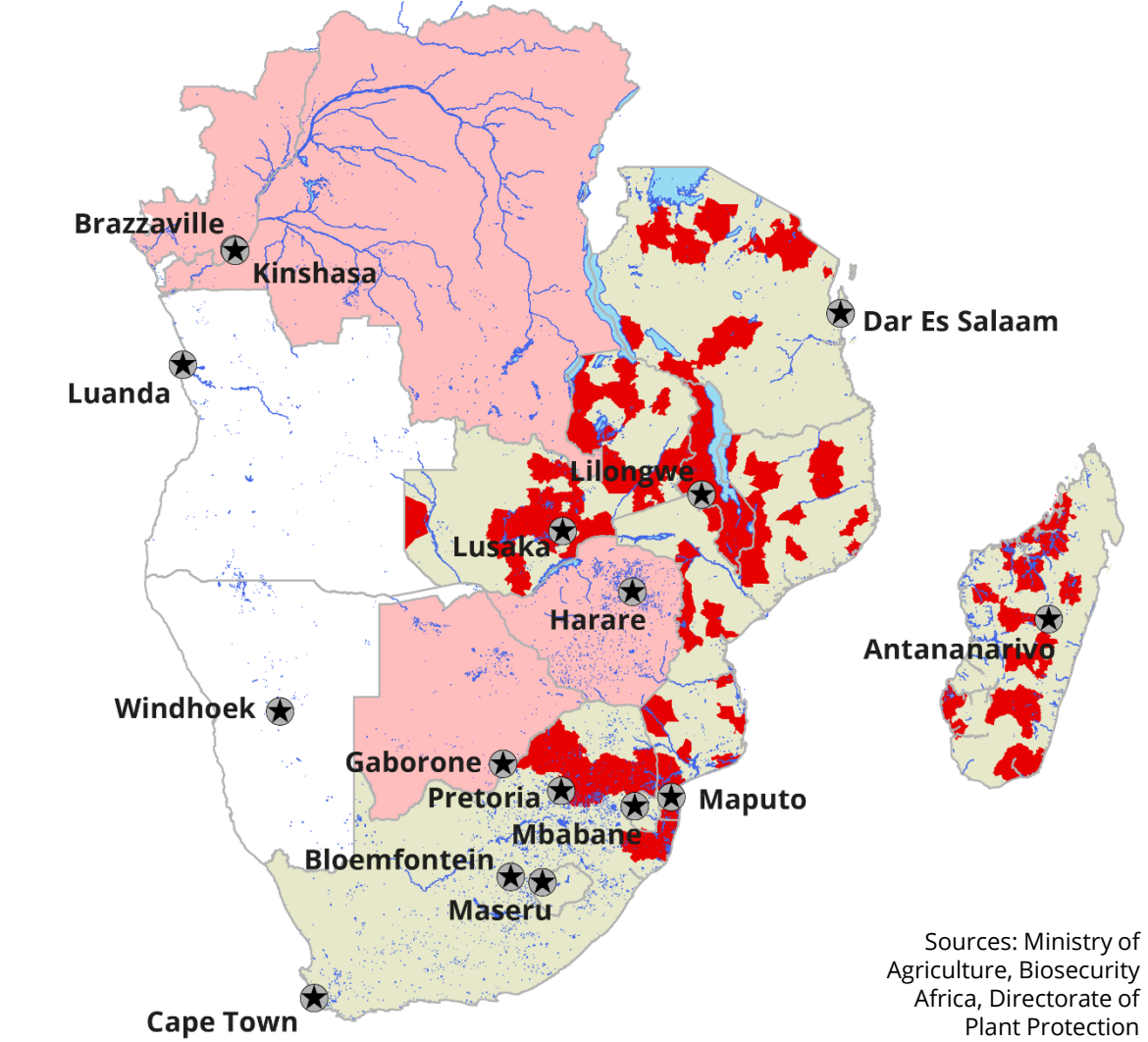
Tanzania



Mozambique



Madagascar



Sources: Ministry of Agriculture, Biosecurity Africa, Directorate of Plant Protection

	No presence		Affected, no sub-national data		Rivers/Lakes
	Fall Armyworm		No data		Capital

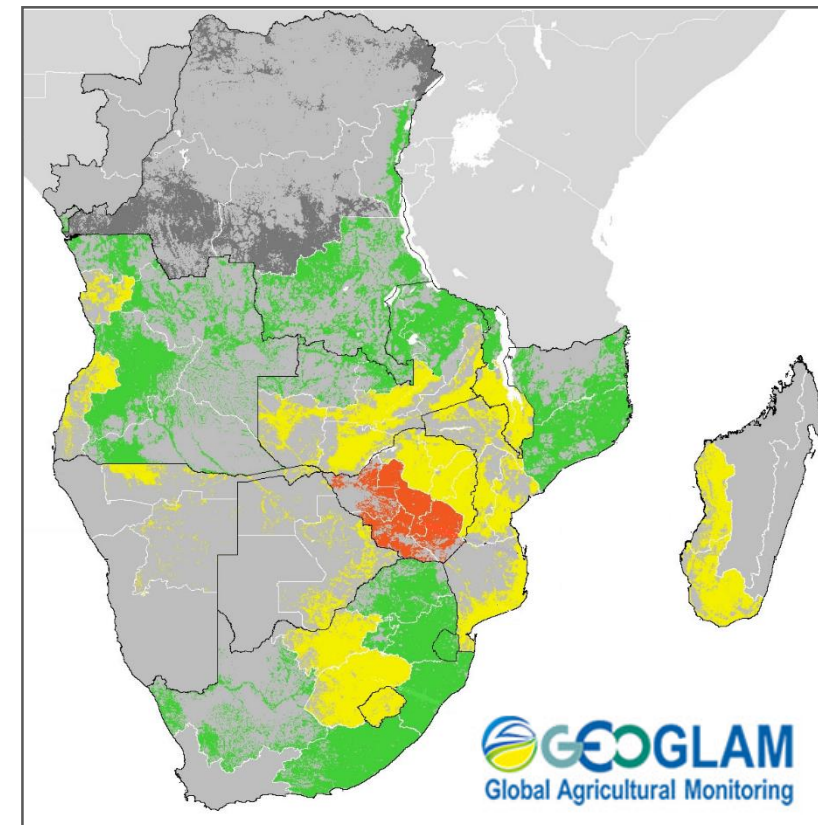
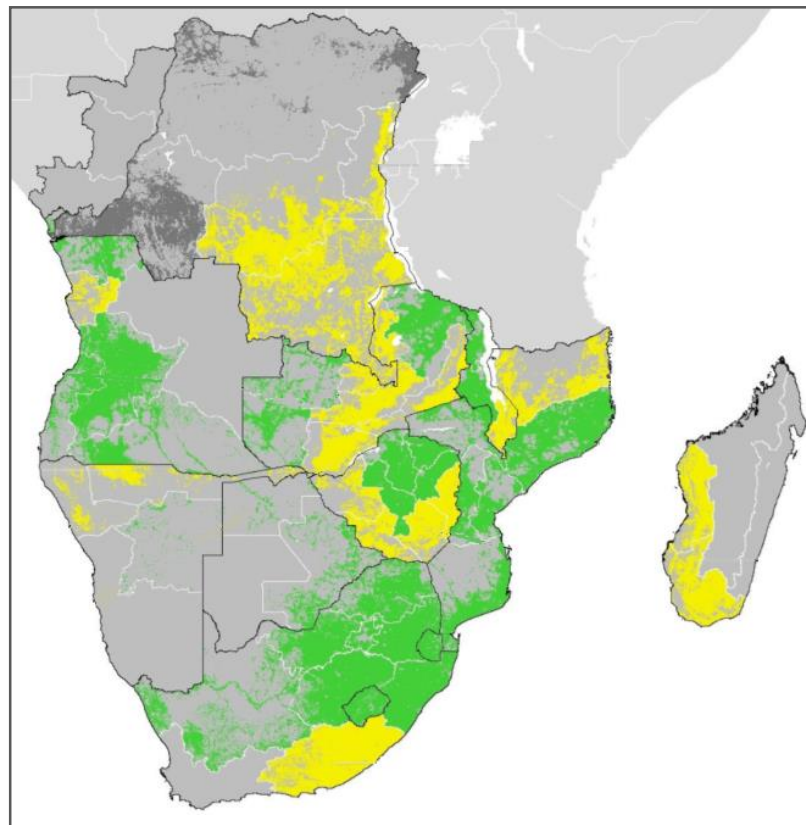
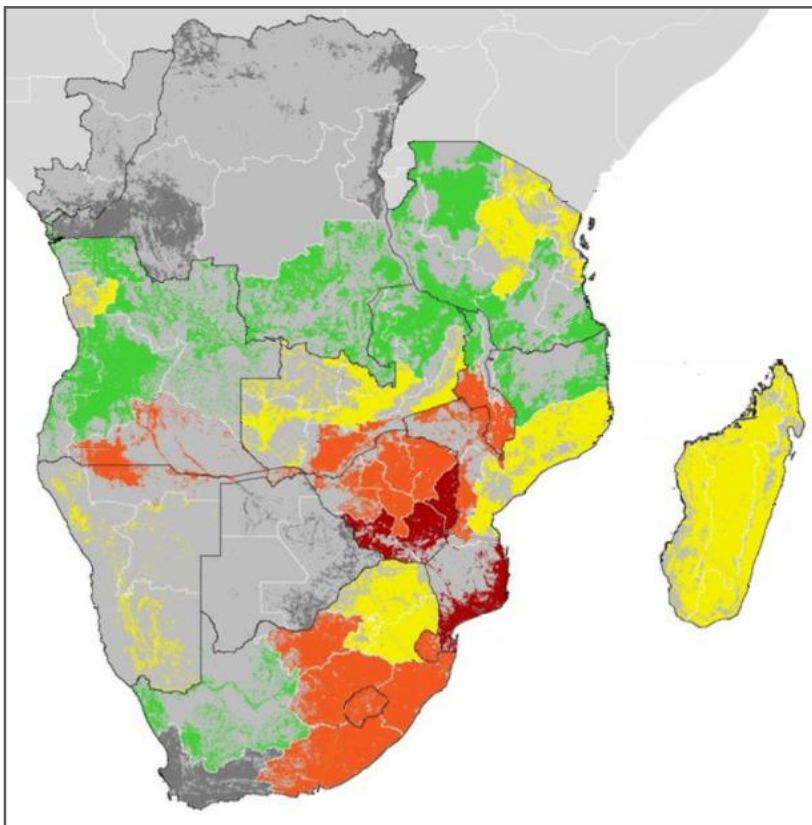
Crop Monitor - Southern Africa: Maize Map



Feb 2016

Feb 2017

Feb 2018



GEOGLAM
Global Agricultural Monitoring

Conditions:  Exceptional  Favourable  Watch  Poor  Failure  Out-of-Season  No Data

IPC - Madagascar



October - December 2016



Projected: January to March 2017

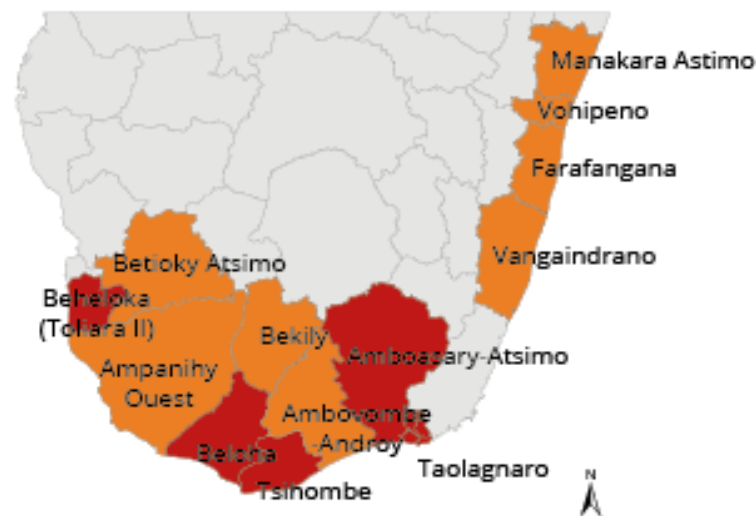


! Phase classification would likely be worse without current or programmed humanitarian assistance

August - October 2017



Projected: November - March 2018



DRC – Scale-up: Kasai Region



SEPTEMBER 2017

DECEMBER 2017



46,000 *People reached (GFD)*

400,000 *People reached (GFD)*



0 *Children & PLW reached (NUT)*

44,200 *Children & PLW reached (NUT)*



654 *Total Tonnage distributed (MT)*

7,238 *Total Tonnage distributed (MT)*



12 *Distribution Sites*

63 *Distribution Sites*



2 *NGO Partners*

10 *NGO Partners*



25 *international staff members deployed/deploying in **September 2017***



53 *trucks deployed from Uganda and Ghana*



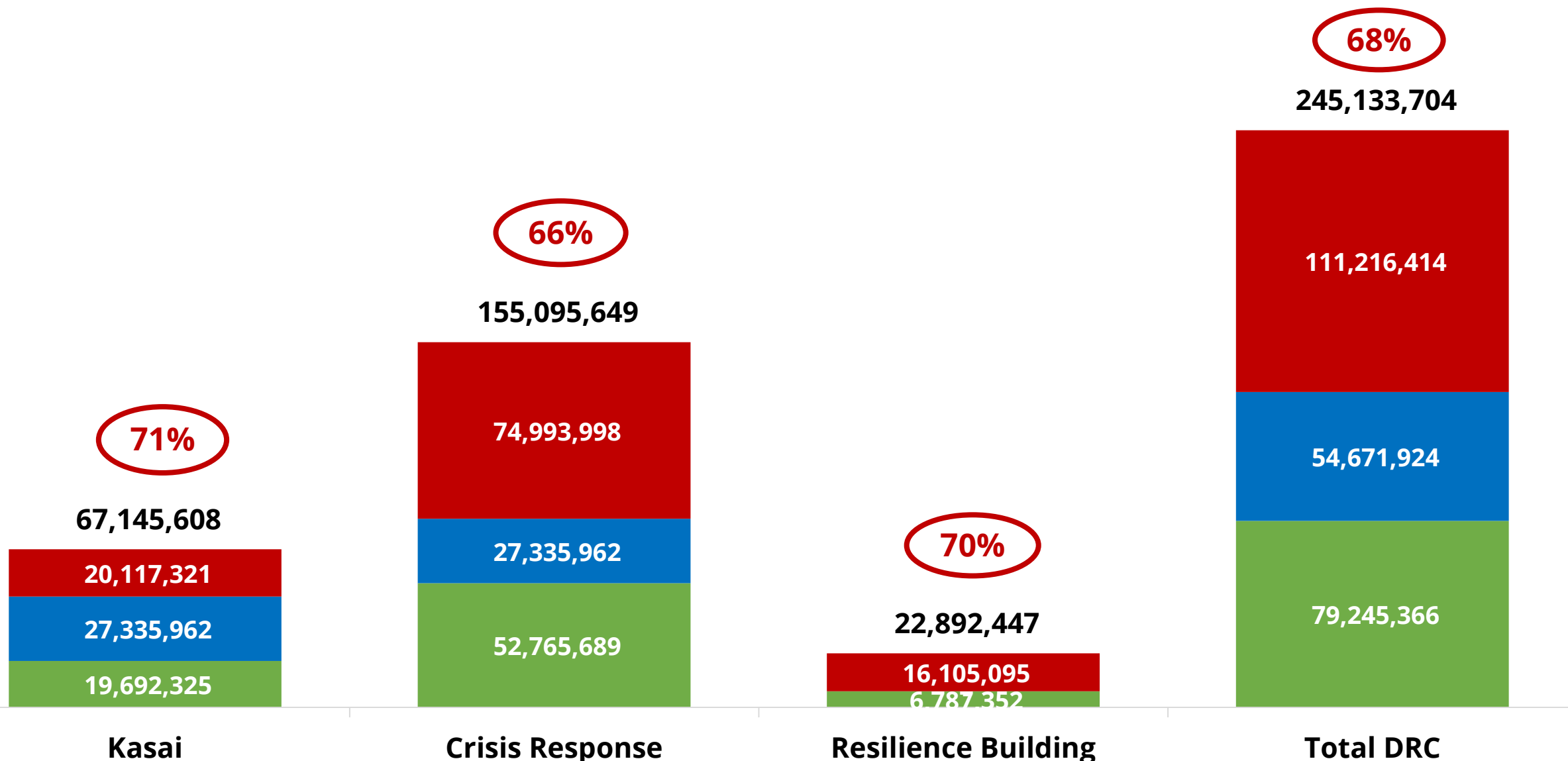
USD 0 / 0 *people reached*

USD 925,000 / 68,000 *people reached*

DRC – Funding Requirements



DRC Funding Requirement (Feb - Jul 2018)



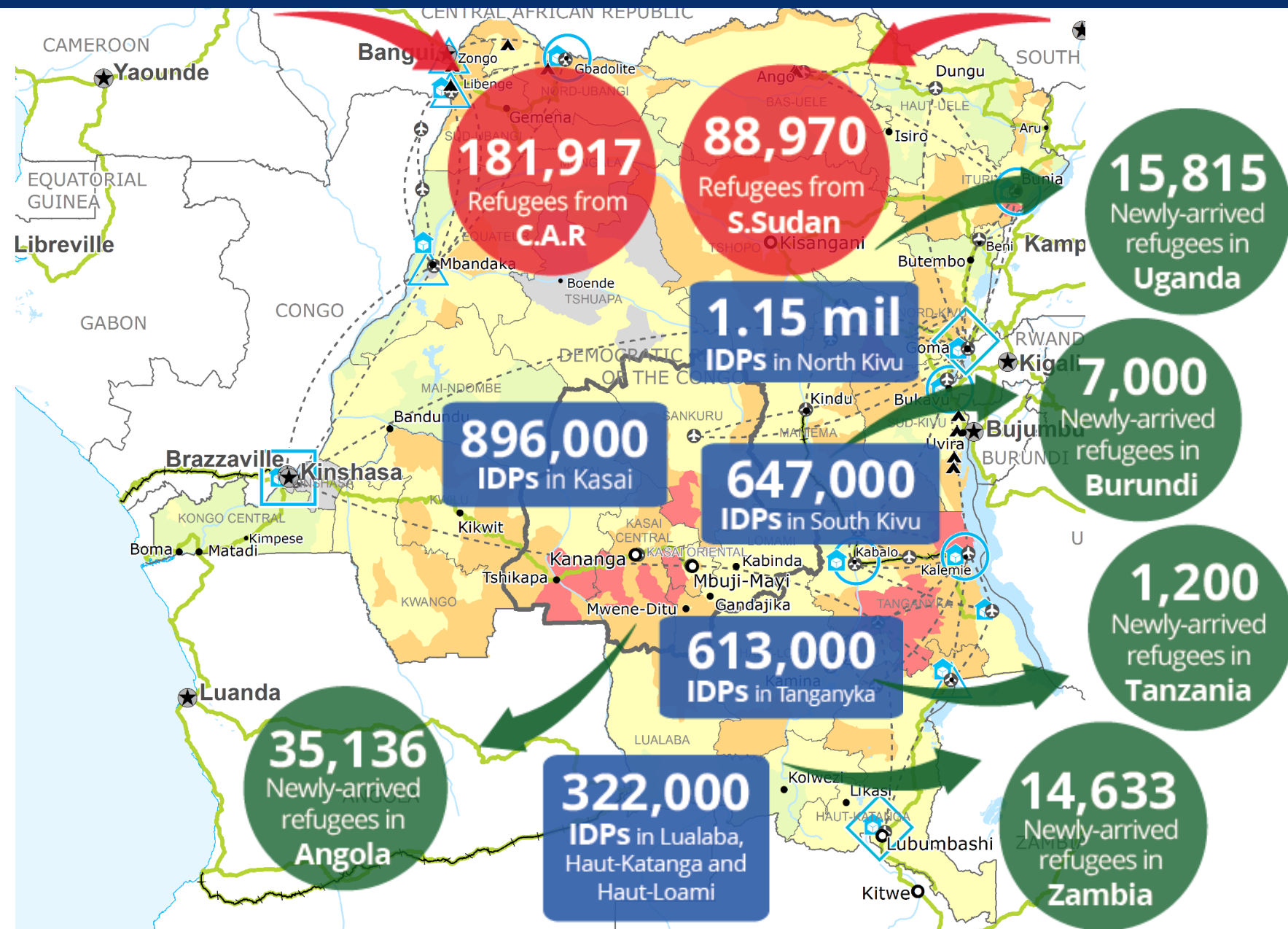
DRC - Refugees



4.49 mil
Total IDPs in DRC
(OCHA, 31 Dec 2017)

537,087
Refugees in DRC
(UNHCR, 31 Dec 2017)

623,059
DRC Refugees in Africa
(UNHCR, 3 Feb 2018)



181,917
Refugees from
C.A.R.

88,970
Refugees from
S.Sudan

15,815
Newly-arrived
refugees in
Uganda

1.15 mil
IDPs in North Kivu

7,000
Newly-arrived
refugees in
Burundi

896,000
IDPs in Kasai

647,000
IDPs in South Kivu

1,200
Newly-arrived
refugees in
Tanzania

613,000
IDPs in Tanganyika

35,136
Newly-arrived
refugees in
Angola

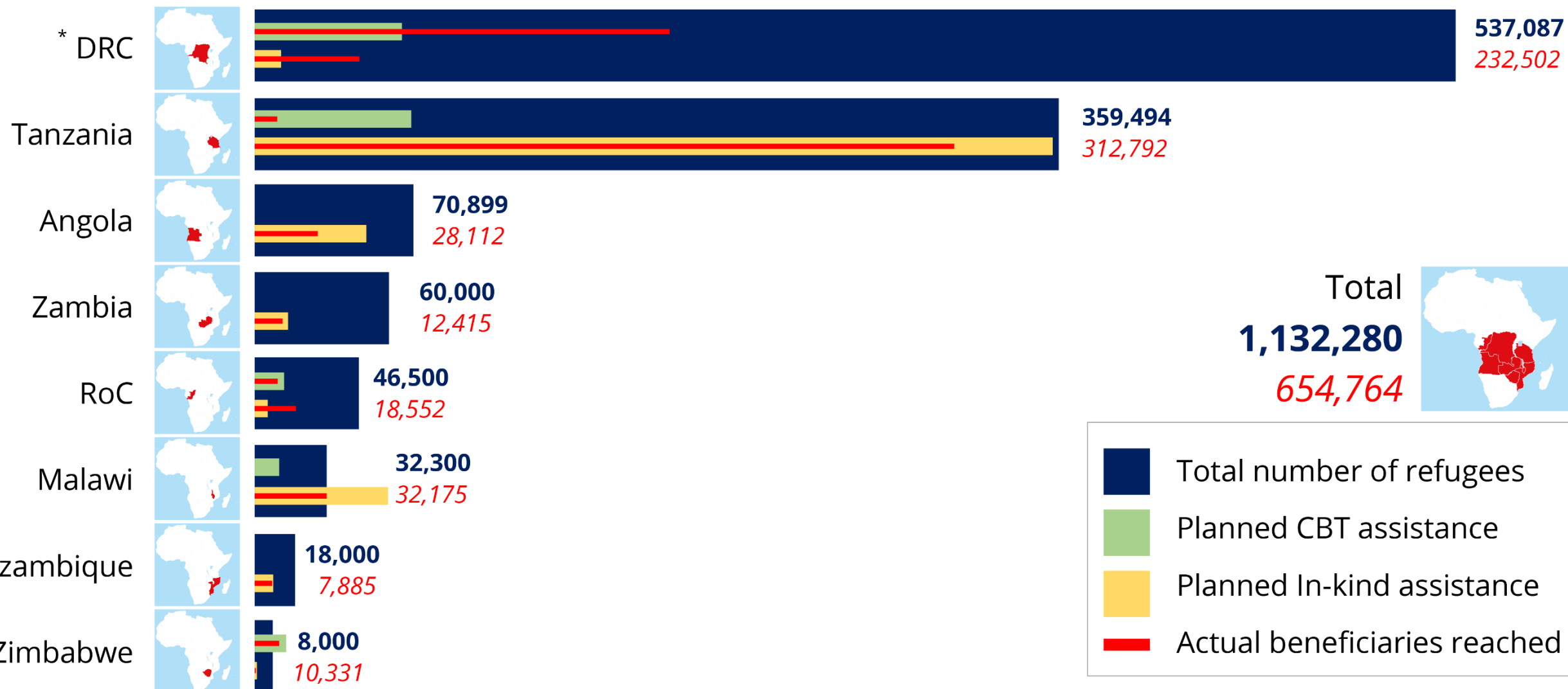
322,000
IDPs in Lualaba,
Haut-Katanga and
Haut-Loami

14,633
Newly-arrived
refugees in
Zambia

Regional Outlook - Refugees



RBJ refugee beneficiaries Planned vs. Actuals - 2017



* Overachievement is as a result of the influx of South Sudanese refugees

Resilience

- Reinforcing national and local systems
- Bridging the humanitarian-development-peace nexus
- Supporting communities



Thank You



WFP/Tatenda Macheke